

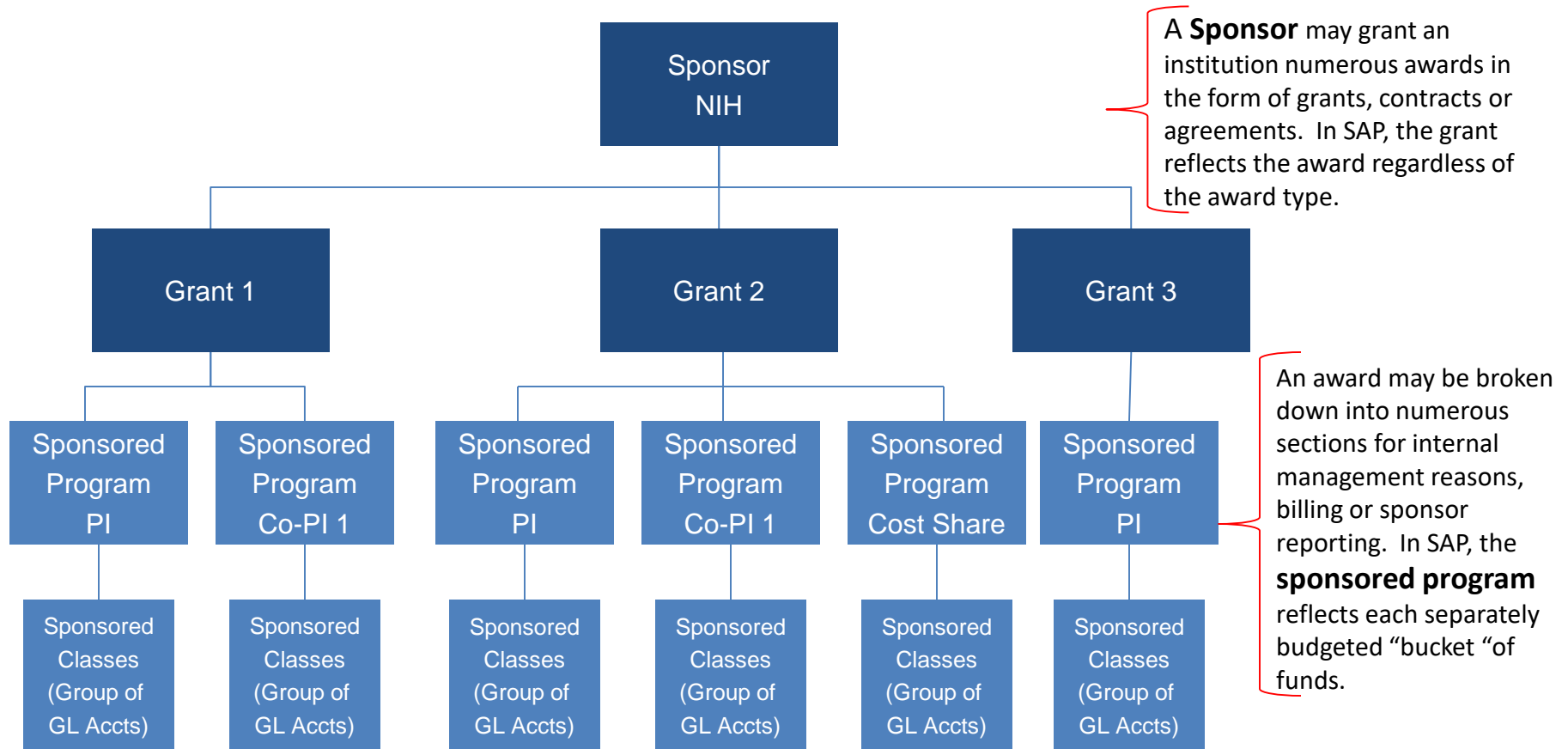
GM Master Data Elements

- **Grant** - An object used to maintain details describing the terms and conditions of the funding and administration of a sponsored award and related cost sharing.
- **Sponsor/Business Partner** - An object used to maintain the financial and administrative details such as sponsor's name, contact information, fiscal year, currency, and billing instructions.
- **Sponsored Program** - Represents the “buckets” of budget and expenses allocated among the PI, Co-PI's, Sub-contracts, Cost Share, etc.
- **Sponsored Class** - An object used to summarize the grantee's revenues and expenses based on the sponsor's revenue and expense categories.

For a full description, review the PAFO video *SAP Terminology* here:

<http://www.bu.edu/buworks/help/guides/video/grant-management/sap-terminology/>

GM Master Data Relationships



Each sponsored program may be restricted by the type of allowable revenue or expense. In SAP, these are **sponsored classes** such as Salaries, Travel, Equipment, F&A.