

BOSTON UNIVERSITY

Summer Term 2023

WELCOME
PACKET



Table of Contents

Things to Do before Classes Begin	4
Set Up Your BU Login Account.....	4
Get Your Student ID: the Terrier Card	5
Pay Your Bill.....	5
Buy or Rent Course Materials	6
Check Your Schedule and Locate Your Classes.....	6
Visiting International Students Only: Check In with ISSO	7
Adjusting Your Schedule	8
Parking Information	9
BU Housing	9
BU Resources and Services	10
Health and Wellness.....	13
Disability & Access Services	14
Fitness & Recreation Center.....	14
Life in the City of Boston	15
Course Codes	22
Building Codes and College Abbreviations	22
Campus Resources.....	24
Photo Contest	25
Summer Term Important Dates.....	26

Welcome to Summer Term at Boston University!

For over a century, Summer Term has welcomed thousands of students from around the nation and the world. The information in this packet is intended to help you prepare for your summer study at Boston University. There are several items that you should take care of as soon as possible, including setting up your BU login account and submitting your required COVID-19 vaccine documentation.

This packet also provides information on facilities and services available to you as a Boston University summer student. Additionally, you will learn about the exciting city of Boston—transportation, shopping, museums, and all sorts of fun activities to enhance your summer. We hope you enjoy your Summer Term experience at BU!



Things to Do before Classes Begin

Please be sure to complete the steps below as soon as possible to ensure you are ready to attend classes. To proceed, you'll need your University ID number (or "U" number), which is a nine-character, computer-generated ID code assigned to BU students, faculty, and staff. The "U" number is used for all University records, including registration and student accounting. Please contact the Summer Term office if you do not know your "U" number.

Set Up Your BU Login and Optional Google Apps Account

If you registered for courses using our online registration system, you already have a BU login name and Kerberos password and are all set to use important BU resources such as the wireless network, the MyBU Student Portal, and course sites like Blackboard Learn. You are also eligible to request a BU Google Apps account, which includes BU Google Mail, if your course of study requires it. If you do not have an active BU login name and Kerberos password, or if you would like to request a BU Google Apps account, please contact the IT Help Center.

IT Help Center
617-353-HELP (4357)
ithelp@bu.edu
bu.edu/tech



Get Your Student ID: the Terrier Card

Students studying on campus this summer will need to obtain a BU student ID card, also known as a “Terrier Card,” to access University buildings and other resources. To ensure a BU student ID card will be created for you, please upload a photo through the “Terrier Card Center” in the MyBU Student Portal (terrier-web.bu.edu). To complete the process, you will also need to upload a valid form of government-issued photo identification, such as a driver’s license or passport.

Instructions and guidelines on how to upload your Terrier Card photo can be found at bu.edu/housing/terrier-card-photo-upload.

Once your upload has been approved, your Terrier Card will be available for pick-up on campus. Students staying in University residences can pick up their Terrier Cards at their assigned residence hall when checking in. Students who are not staying in residence halls will receive an email with instructions to schedule an appointment to pick up their cards.

If you have questions regarding the Terrier Card, please email tco@bu.edu.

Pay Your Bill

Payment is due by May 23, 2023, for Summer 1 and 12-week courses. Payment is due by July 5, 2023, for Summer 2 courses. Late fees may be charged if you do not pay by these deadlines. If you have not yet paid your bill, please visit the Student Accounting Services website for information on payment options: bu.edu/studentaccountingservices/your-bill/payment-options.

Payment may also be made in person at the Student Accounting Services office, which is open Monday through Friday from 9 am to 5 pm.

Student Accounting Services

25 Buick Street, Suite 130

Boston, MA 02215

bu.edu/studentaccountingservices

If you have any questions about the payment process, contact Student Accounting Services at 617-353-2264 or by email at studenta@bu.edu.



Things to Do before Classes Begin (cont.)

Buy or Rent Course Materials

Materials for your courses are available at Barnes & Noble @ Boston University, BU's official campus bookstore. Visit their site at bu.bncollege.com to view and order your textbooks.

You can also visit the bookstore at the location below to make your purchases in person.

Barnes & Noble @ Boston University
910 Commonwealth Avenue
Boston, MA 02215
617-267-8484
Textbook Direct Line: 617-415-9158
bu.bncollege.com

Summer Hours:
Monday-Friday, 10 am–6 pm
Saturday, 11 am–6 pm
Sunday, Closed



Check Your Schedule and Locate Your Classes

You'll want to make sure you know where to go—and when—as you begin your classes. Be sure to check your course schedule by clicking “My Academics” and then “My Classes” in the MyBU Student Portal (student.bu.edu/MyBU).

Your course schedule contains several pieces of information, as shown in the following example:

CAS PS 101S B1 Gen Psychology TR 0600P 0930P CAS B20

- “CAS PS” indicates the course is offered by the College of Arts & Sciences (CAS) Psychology department (PS).
- “101” is an introductory-level course number for General Psychology.
- “S” stands for Summer.
- “B1” is the course section (B1 indicates Summer 2; Summer 1 courses have an A section code; 12-week courses have a C section code; online courses have a section code that begins with “O”).
- “TR 0600P 0930P” indicates that the course meets Tuesdays (T) and Thursdays (R) from 6 to 9:30 pm.
- The last item, “CAS B20,” is the building code and room number of the classroom. In this example, CAS B20 means the course is located in the College of Arts & Sciences building (685–725 Commonwealth Avenue), room B20 (basement level).

To find your three-digit building code and locate your class, please see the list of Building Abbreviations on page 22 or the digital campus map: maps.bu.edu.

The Summer Term office is glad to assist you in finding classroom locations. Please contact us during our regular business hours (Monday–Friday, 9 am–5 pm) to find out where classes are held. Classroom locations are also available on the Summer Term website beneath each course description.

Visiting International Students Only: Check In with ISSO

All visiting international students attending BU Summer Term courses and programs are required to complete a check-in with BU's International Students & Scholars Office (ISSO) after arriving on campus, regardless of US immigration status. Please complete your initial ISSO check-in through the "International Verification" page, which can be accessed under the Quick Links section of the MyBU Student Portal (student.bu.edu/MyBU).

It is the responsibility of the ISSO to keep complete and accurate records on every BU international student and provide them to US Citizenship and Immigration Services (USCIS) upon request. It is critical that all visiting international students complete their check-in with the ISSO at the beginning of their Summer Term program to ensure accurate reporting.

International Students & Scholars Office
888 Commonwealth Avenue, 2nd Floor
Boston, MA 02215
617-353-3565
bu.edu/isso



Adjusting Your Schedule: How to Add, Drop, or Change Courses

The deadlines to make any changes to your course schedule for standard courses are May 30 for Summer 1, June 6 for the 12-week session, and July 11 for Summer 2. Add/drop dates for nonstandard courses are individually determined and can be found on the MyBU Student Portal (student.bu.edu/MyBU) or within the Summer Term course listings. No schedule changes are possible after the add/drop deadline.

During add/drop week, if you want to add a course after it has started, you should first contact the instructor to receive permission to add. Some instructors do not allow students to join a course once it has begun. It is recommended that you register for and attend summer courses by their first meeting date.

Add/drop can be done by clicking "My Academics" and then "Registration Planner" in the MyBU Student Portal, or by completing a Summer Add/Drop form and emailing it to the Summer Term office. Forms can be found online at bu.edu/summer/forms.

If you drop any courses after the add/drop deadline listed above, you will receive a "W" in the course, and you will be responsible for all associated tuition and fees. No "W" grades are possible after June 15 for Summer 1, July 11 for the 12-week session, or July 28 for Summer 2.



Parking Information

Parking permits may be purchased online through the Transportation Management Portal (bu.aimsparking.com).

Student Commuter permits are valid all day in select lots and may be purchased for a fee of \$448.

- Students residing in certain areas of Allston, Brighton, Brookline, Fenway/Kenmore, Bay Village, and Back Bay are **not eligible** to purchase a Student Commuter permit.
- Student Commuter permits are limited, and issuance is subject to availability.

Student Flex permits are valid in eligible lots and garages for a daily fee of \$12.

- Your credit card is charged each time you park on campus.
- Instructions for signing up for the Student Flex permit are available at bu.edu/parking/miparc-flex.

Student Evening Commuter permits are valid in select lots after 3 pm and may be purchased for \$168.

- Students registered for daytime classes (any class starting before 4 pm, defined by the University Registrar) are **not eligible** to purchase a Student Evening Commuter permit.

Vehicles without valid permits will be subject to citation or tow without notice and at the owner's risk and expense. For more information, please visit bu.edu/parking, email parking@bu.edu, or call 617-353-2160.

BU Housing

On-campus housing is available to students registered for Boston University Summer Term courses. If you wish to reserve on-campus housing, you must first complete an online housing application with the BU Housing office. The application can be found at bu.edu/housing/summer/how-to-apply. A \$200 non-refundable housing guarantee payment is due when your housing application is submitted.

BU Housing
25 Buick Street
617-353-3511
sumhouse@bu.edu
bu.edu/housing/summer



Boston University Resources and Services

Boston University Shuttle—The BUS

Traveling throughout the Boston University Charles River Campus and to the Medical Campus is easy using the Boston University Shuttle (BUS), which is provided free of charge to members of the BU community. For a current schedule, route map, and exact stop locations, please visit the BUS website at bu.edu/thebus.

Yawkey Center for Student Services

The six-story Yawkey Center for Student Services, located at 100 Bay State Road, is home to the Center for Career Development, the Educational Resource Center (ERC), and several College of Arts & Sciences advising and academic support programs.

CAS Center for Writing

The CAS Writing Center offers free one-on-one consultations to students enrolled in Writing Program courses (CAS WR 112, WR 120, WR 151, WR 152, and WR 153). Students enrolled in WR courses are strongly encouraged to make appointments in advance using the online scheduling system at bu.edu/writingprogram/the-writing-center. Students enrolled in other CAS courses may also use the Writing Center, but only on a drop-in basis by requesting an appointment here: bu.edu/writingprogram/the-writing-center/walk-in-appointment. The CAS Writing Center does not offer support for students in non-CAS courses, for graduate-level writing, or for technical and career-related writing.



Educational Resource Center

The Educational Resource Center (ERC) helps students develop the range and depth of academic skills required by the University's rigorous programs. The free services and programs are designed to help students discover and develop effective study strategies that complement their innate learning styles. ERC services are provided by a team of seasoned professionals, graduate students, and undergraduate student leaders.

Peer tutoring is only available in a limited number of subjects. Peer Tutors, when available, are provided on a first-come, first-served basis. The ERC does not guarantee the availability of Peer Tutors in all courses or subjects. We encourage students to visit the ERC website (bu.edu/erc) for additional resources and services offered both at the ERC and elsewhere at BU.

Educational Resource Center
100 Bay State Road, 6th Floor
617-353-7077
erc@bu.edu
bu.edu/erc

Summer Hours:
Monday–Friday, 9 am–5 pm

George Sherman Union

The George Sherman Union (GSU) is a central hub for student life. In addition to being home to different types of dining options and a City Convenience store, the GSU hosts frequent lectures and events, acting as the focal point of campus activity. Student groups and organizations are able to showcase their work and promote upcoming events in an exhibition area at the main entrance of the building known as “The Link.” There are workspaces and study lounges available throughout the rest of the building. University-sponsored groups and organizations are able to reserve conference rooms located in the GSU for meetings and seminars through Events & Conferences.

Along with its vibrant student presence, the GSU is home to the Community Service Center, the Dean of Students office, and the Orientation office. It is also the location of the BU Hub, the BU Arts Initiative, Catering on the Charles, and Dining Services, as well as Student Government offices, the Islamic Prayer Room, and the Center for Gender, Sexuality & Activism (CGSA).

The GSU Operations office provides information about activities and resources on campus to students, staff, and guests. This office manages the building’s lost and found and can provide a variety of chargers and equipment to anyone with a BU ID. For more information, please visit the Operations office at the GSU, or call 617-353-5498.

George Sherman Union

775 Commonwealth Avenue

617-353-5498

bu.edu/dining/location/gsu-food-hall

Library Services

With locations spread across campus and available everywhere via bu.edu/library, BU Libraries supports the research and learning activities of the University community.

There are 19 libraries on campus, providing over 2 million print and electronic book titles, 1 million print and electronic serials titles, and 200,000 physical and electronic media titles. More than 85% of their collections are available electronically.

The BU Libraries provides research tools and services that include more than 400 databases, library tutorials, library instruction from research basics to graduate-level classes, reference services on demand, access to digital resources, specialist consultations, and librarian-created guides with curated resources. Librarians are available to help via chat, email, text, phone, or Zoom appointment.

Mugar Memorial Library is BU’s largest branch, located centrally on the Charles River Campus.

Mugar Memorial Library

771 Commonwealth Avenue

617-353-2700

bu.edu/library/mugar-memorial

For details on other branch libraries and holdings, visit bu.edu/library.

Math Tutoring Room

Summer Term offers free walk-in tutoring for Mathematics & Statistics summer courses in the Math Tutoring Room, located at CDS 261 (645–665 Commonwealth Avenue). A tutor is available Monday through Thursday from 10 am to 6 pm. Since the tutors are graduate students, this resource is particularly useful for help with specific concepts and homework problems. The Math Tutoring Room is also a good place to study, do homework, meet with classmates, or just relax between classes.

Boston University Resources and Services (cont.)

The MyBU Student Portal

The MyBU Student Portal provides online access to your student records at Boston University. You can use the Portal to view and change personal information such as your address, view your student account, register for classes, see your grades, check your compliance status, confirm classroom locations, and more. To use the MyBU Student Portal, you must have an active BU login name and Kerberos password. Visit student.bu.edu/MyBU.

Course Sites (Blackboard Learn)

A course site is a web-based system for managing course materials. Your instructor can make announcements, share course materials, and enhance discussion—all in one easily accessible location. Blackboard Learn is the most common location for course sites used at Boston University. You will need an active BU login name and Kerberos password to access Blackboard Learn.

Blackboard Learn is available to anyone with a BU login name and Kerberos password at learn.bu.edu. In addition, you can access Blackboard Learn through your course listings on the MyBU Student Portal (student.bu.edu/MyBU).

Not every course at BU will have a course site, so be sure to check with your instructor if you do not see your course site listed in the MyCourses section of Blackboard Learn. All students on the official course roster will automatically be given access to their course site the day after they have registered.

If you are unable to access your course site, please contact your instructor for information.

Computing and Network Resources

The University provides secure wireless network access, which you will see as “eduroam.” Information about the wireless network is provided at bu.edu/tech/wireless. You must have a BU login name and Kerberos password to access the wireless network.

All Summer Term students have access to a wide variety of computers for communication, coursework, and research at the BU Common @ Mugar located at the Mugar Memorial Library, 771 Commonwealth Avenue. The BU Common @ Mugar has nearly 200 workstations on the first three floors of Mugar Library. Information Services & Technology offers assistance in all areas of computing through its two IT Help Center locations and via the website bu.edu/tech.

IT Help Center
771 Commonwealth Avenue (IT Help Center @ Mugar Library)
179 Amory Street (West Campus)
617-353-HELP (4357)
ithelp@bu.edu
bu.edu/tech



Health and Wellness

Student Health Services

Boston University Student Health Services, located at 881 Commonwealth Avenue, is available for urgent care issues by appointment Monday through Friday from 8:30 am to 4:30 pm (opens 10 am on Thursdays). Visiting summer students who are not enrolled in BU's Student Health Insurance Plan (SHIP) are charged a fee of \$25 for each visit. If you receive blood work or immunizations, you will need to provide your insurance information or have charges billed to your student account.

If you have a non-urgent issue that requires routine care, Student Health Services will work with you to provide a referral based on your insurance.

In the case of an emergency, call the Boston University Police at 617-353-2121 if you are on campus, or call 911 if you are off campus. If you experience a medical emergency or crisis on a weekday after closing hours or on a weekend, you may call 617-353-3575 and follow the prompts to be connected with the appropriate healthcare provider or you may go to the closest urgent care center or emergency department.

Appointments are required for most medical services. Please have your BU ID number ready when you call.

Student Health Services
881 Commonwealth Avenue
617-353-3575

bu.edu/shs

Summer Hours:
Monday-Wednesday, 8:30 am-4:30 pm
Thursday, 10 am-4:30 pm
Friday, 8:30 am-4:30 pm

Any student who experiences a sexual assault or crisis should first call the Sexual Assault Response & Prevention Center (SARP) at 617-353-SARP (7277) to speak with a counselor.

Behavioral Medicine (Mental Health)

Behavioral Medicine staff, psychiatrists, psychologists, clinical nurse specialists, licensed mental health clinicians, and licensed clinical social workers are available to address the many psychological and adjustment issues that arise in a university community. When longer-term care is needed, they will facilitate referral to expert clinicians in the local community.

Appointments are available by calling 617-353-3569. Regular hours are Monday through Friday, 9 am-4:30 pm. Behavioral Medicine clinicians are also available 24 hours a day on-call for mental health emergencies. For more information about Behavioral Medicine services, please visit the website **bu.edu/shs/behavioral-medicine**.

Emergencies

Student Health Services and/or the BU Police will help in managing a medical emergency quickly and effectively. Call the BU police at 617-353-2121 (call 911 if you have a life-threatening emergency). Medical emergencies are transported by ambulance to local hospital emergency rooms. Student Health Services will call to follow up on your emergency and will help in arranging additional care as needed.

Emergency Phone Numbers:

Life-Threatening Emergency: 911

Boston University Police: 617-353-2121

Ambulance: 617-353-2121

Fire: 617-353-2121

Boston University Sexual Assault Response & Prevention Center (24 hours): 617-353-7277

Health and Wellness (cont.)

Student Health Insurance

Massachusetts law requires that all full-time students and all international students have medical insurance. BU offers a Student Health Insurance Plan (SHIP) that covers the most typical health problems that students encounter while at college. All visiting international students enrolled during the summer are required to have medical insurance and are automatically enrolled in and charged for BU's SHIP as part of their registration. Students may waive enrollment in the SHIP if they are enrolled in a comparable US-based insurance plan. Students studying from outside the US may decline enrollment in the SHIP. More information regarding the SHIP requirement and how to submit a waiver/declination, if applicable, can be found on the Student Accounting Services website at bu.edu/studentaccountingservices/resources/student-health-insurance-at-boston-university/summer-insurance.

Two levels of individual coverage are available, Basic and Plus. Visiting international students are charged at the Basic level with their registration and may request Plus coverage by emailing insmed@bu.edu at least two weeks prior to the start of their summer courses. For rates and dates of coverage, please visit bu.edu/summer/international-college-students/health-records-insurance.

For questions about the Boston University Student Health Insurance Plan, contact Student Accounting Services at 617-353-2870, or email insmed@bu.edu.

Disability & Access Services

Boston University Disability & Access Services (DAS) is committed to supporting the academic, social, and cultural integration of individuals with disabilities. Its mission is to foster academic excellence, personal responsibility, and leadership growth in students with disabilities. Individuals are encouraged to contact DAS to discuss support services and accommodations they may need. Services include auxiliary aids such as sign-language interpreters, exam accommodation, note-taking services, text in alternative format, and assistive technology. Accommodations are provided on a case-by-case basis, depending on the individual's diagnosis and documented needs. DAS is also available to consult with individuals and groups regarding architectural, programmatic, digital, or communication access.

The University's Compliance Officer for Section 504 of the Rehabilitation Act of 1973 is the director of DAS, Lorraine E. Wolf, PhD, who can be reached at lwolf@bu.edu.

Disability & Access Services
25 Buick Street, Suite 300
617-353-3658
access@bu.edu
bu.edu/disability

Fitness & Recreation Center

Boston University's Fitness & Recreation Center (FitRec) is the place to go for a wide range of summer recreation and fitness courses, including outdoor activities such as sailing and rowing, wellness classes such as yoga and cardio-kickboxing, and much more. With approximately 270,000 square feet of space, FitRec offers an 18,000-square-foot weight and cardio room, two separate swimming pools, two multi-use gymnasiums with seven courts, an elevated jogging track overlooking several activity areas, racquetball and squash courts, and a 30-foot climbing wall. There is even a lazy river—a relaxing way to escape the heat on a summer afternoon.

BU students and those enrolled in summer programs at BU are eligible for FitRec membership. Stop by the FitRec front desk to find out about your membership options. A complete list of summer 2023 courses is available at bu.edu/fitrec.

Fitness & Recreation Center
915 Commonwealth Avenue
617-358-3740
fitrec@bu.edu
bu.edu/fitrec



Life in the City of Boston

Founded in 1630, Boston is one of the most historic cities in the United States—and also a vibrant, dynamic metropolis that remains one of the top destinations in the country. During the summer, Bostonians take full advantage of the warm weather, venturing out for the city's wide variety of outdoor activities, cultural attractions, neighborhood events, and nightlife.

To help you learn about the city and get you started in enjoying its possibilities, we have provided a general guide to the many activities and attractions that Boston has to offer. You'll find links to information on everything from sporting events to shopping to sightseeing. We're sure that you will discover many things to enjoy as you explore the city.

Public Transportation

Boston has a very compact downtown area, making it easy to get around by foot or via public transportation. The Massachusetts Bay Transportation Authority (MBTA), referred to locally as the "T," maintains the public transportation system in Boston. This system of buses, trolleys, and underground trains (subways) allows you to travel easily all over the city of Boston as well as the suburbs.

For fares, comprehensive schedules, and route maps, please visit [mbta.com](https://www.mbta.com).

For unlimited travel on the subway and local bus, you can purchase a Monthly LinkPass at [mbta.com/fares/subway-fares](https://www.mbta.com/fares/subway-fares).

Subway

MBTA stations are marked by signs with a large letter "T." The five major subway lines are the Green, Red, Blue, Orange, and Silver lines. Boston University is located on the T's Green Line "B" train. The main BU stops are Blandford Street, BU East, BU Central, and Amory Street.

Passes, including the CharlieTicket and the CharlieCard, can be purchased at select stations and retail locations. For information on fares, Charlie pass options, schedules, and more, please visit [mbta.com](https://www.mbta.com).

Buses

The subways and trolleys connect at many points with MBTA buses, which offer extensive service through Boston and the suburbs. For information on fares, Charlie pass options, routes, and schedules, please visit [mbta.com](https://www.mbta.com).

Taxis

There are multiple recognized cab associations in Boston. For official information on approved rates and riders' rights, visit bpdnews.com/authorized-taxi-companies.

Boston Cab Assoc: 617-536-3200

City Cab Assoc: 617-536-5100

ITOA: 617-825-4000

Metro Cab: 617-782-5500



Life in the City of Boston (cont.)

Historical Sites

THE PAUL REVERE HOUSE

The oldest building in downtown Boston, this landmark is known for being the residence of Paul Revere when he left for his famous 1775 “Midnight Ride” to warn John Hancock and Samuel Adams that British troops were preparing to march into the countryside to arrest them. For more information, visit paulreverehouse.org.

BOSTON TEA PARTY SHIPS & MUSEUM

This is a replica of the ship where the famous “Boston Tea Party” took place. For more information, go to bostonteatpartyship.com.

USS CONSTITUTION MUSEUM

Also known as Old Ironsides, the USS Constitution is the oldest commissioned ship in the US Navy. It is located at Charlestown Navy Yard. For hours, call 617-426-1812 or visit ussconstitutionmuseum.org.

OLD STATE HOUSE

It was from the balcony of the Old State House that the famous Declaration of Independence was proclaimed to the citizens of Boston in 1776. Following the Revolution, it was the first state house of the Commonwealth of Massachusetts, used for multiple purposes such as a city hall, a post office, and even a shopping arcade. In 1881, the building was restored, functioning as a museum ever since. Here you can see tea from the Boston Tea Party and John Hancock’s coat. For more information, go to revolutionaryspaces.org/osh.



THE FREEDOM TRAIL

This walking tour of historic Boston is easily identified by red lines on the sidewalks of downtown Boston. Begin the walk from the Visitor Center at Boston Common (139 Tremont Street). Be sure to wear comfortable shoes: this tour covers 2.5 miles and 16 historical sites. To join a guided tour, call 617-357-8300. Find out more at thefreedomtrail.org.

BOSTON PUBLIC LIBRARY

Located in Copley Square, this was the first free, large municipal library in the United States, founded in 1848. This beautiful library boasts rare books and manuscripts, maps, first-edition William Shakespeare, and the personal library of John Adams. This is a great place to study, particularly during the summer, when you can sit in the gorgeous courtyard of the historic McKim building. For more information, visit bpl.org.

BOSTON DUCK TOURS

See Boston sights from land and sea in an amphibious vehicle. The popular, 80-minute Duck Tour departs from the Prudential Center at 53 Huntington Avenue. For details and directions, call 617-267-3825 or visit bostonducktours.com.

Parks

ARNOLD ARBORETUM

125 Arborway, Boston
617-524-1718
arboretum.harvard.edu

EMERALD NECKLACE

The Emerald Necklace extends from Boston Common to Franklin Park, and includes the following Boston parks:

- Boston Common
- Public Garden
- Commonwealth Avenue Mall
- Back Bay Fens
- The Riverway
- Olmsted Park
- Jamaica Pond
- Arnold Arboretum
- Franklin Park

For information on these parks, visit cityofboston.gov/parks/emerald or emeraldnecklace.org.

FRANKLIN PARK ZOO

1 Franklin Park Road, Boston
617-541-LION (5466)
zoonewengland.org/franklin-park-zoo

MASSACHUSETTS STATE PARKS

Including the following local parks:

- Blue Hills Reservation
- Esplanade
- Dorchester Shores Reservation
- Middlesex Fells Reservation
- Boston Harbor Islands

For information on these and other state parks, visit mass.gov/eea/agencies/dcr/massparks/places-to-go.

MT. AUBURN CEMETERY

580 Mount Auburn Street, Cambridge
617-547-7105
mountauburn.org

ROSE KENNEDY GREENWAY

617-292-0020
rosekennedygreenway.org

Recreation

CHARLES RIVER CANOE & KAYAK

617-965-5110
paddleboston.com

COMMUNITY BOATING

21 David G. Mugar Way, Boston
617-523-1038
community-boating.org

FOURTH OF JULY FIREWORKS

DCR Hatch Shell
Charles River Esplanade
boston-discovery-guide.com/boston-fire-works.html

GOLF

William Devine Golf Course 617-265-4084
George Wright Golf Course 617-364-2300
cityofbostongolf.com.

BLUEBIKES BIKE SHARING

bluebikes.com



Life in the City of Boston (cont.)

Museums

BOSTON CENTER FOR THE ARTS

539 Tremont Street, Boston
617-426-5000
bcaonline.org

HARVARD MUSEUM OF NATURAL HISTORY

26 Oxford Street, Cambridge
617-495-3045
hmnh.harvard.edu

HARVARD UNIVERSITY ART MUSEUMS

(Fogg Museum/Busch-Reisinger Museum/
Arthur M. Sackler Museum)
32 Quincy Street, Cambridge
617-495-9400
harvardartmuseums.org

INSTITUTE OF CONTEMPORARY ART

25 Harbor Shore Drive, Boston
617-478-3100
icaboston.org

ISABELLA STEWART GARDNER MUSEUM

25 Evans Way, Boston
617-566-1401
gardnermuseum.org

JOHN F. KENNEDY PRESIDENTIAL LIBRARY AND MUSEUM

Columbia Point, Boston
617-514-1600
jfklibrary.org

THE MIT MUSEUM

265 Massachusetts Avenue
Building N51, Cambridge
617-253-5927
mitmuseum.mit.edu

MUSEUM OF AFRICAN AMERICAN HISTORY

6 Joy Street, Boston
617-720-2991
maah.org

MUSEUM OF FINE ARTS

465 Huntington Avenue, Boston
617-267-9300
mfa.org

MUSEUM OF SCIENCE

1 Science Park, Boston
617-723-2500
mos.org

NEW ENGLAND AQUARIUM

1 Central Wharf, Boston
617-973-5200
neaq.org

THE NICHOLS HOUSE MUSEUM

55 Mount Vernon Street, Boston
617-227-6993
nicholshousemuseum.org

THE OLD SOUTH MEETING HOUSE

310 Washington Street, Boston
617-720-1713
oldsouthmeetinghouse.org

PEABODY MUSEUM OF ARCHAEOLOGY & ETHNOLOGY

11 Divinity Avenue, Cambridge
617-496-1027
peabody.harvard.edu

THE SPORTS MUSEUM

TD Garden
100 Legends Way, Boston
617-624-1234
sportsmuseum.org



Music, Theatre, Movies, etc.

Whether you love performing arts, consider yourself a movie buff, or enjoy listening to live music or readings, Boston offers a wealth of entertainment.

For an up-to-date listing of summer art events, including those that offer free admission to BU students, see bu.edu/arts/in-boston. A calendar of events in the arts can also be found at calendar.artsboston.org. The website meetboston.com also has lots of information on what is happening in Boston.

The Boston area has many movie theatres. For mainstream fare nearby, the AMC Loews Boston Common 19 theatre is located downtown at 175 Tremont Street.

If you're more interested in restored classics, art house features, foreign films, limited release movies, documentaries, or cult classics, check out the Coolidge Corner Theatre, Kendall Square Cinema, Brattle Theatre, and the Museum of Fine Arts.

Sports

BOSTON RED SOX

The Sox are Boston's Major League Baseball team, and the 2018 World Series Champions. They play at Fenway Park, which is located in Kenmore Square—just steps from the BU campus. The baseball season lasts from April to October. For team information, schedules, and tickets, visit redsox.com.

NEW ENGLAND REVOLUTION

The Revolution is Boston's professional soccer team. They play at Gillette Stadium in Foxborough, Mass., from March to October. Visit revolutionsoccer.net.



Life in the City of Boston (cont.)

Places to Shop

There are many shopping areas around Boston and Cambridge. Here are just a few:

COOLIDGE CORNER, BROOKLINE

Directions from Kenmore Square: Green Line “C” train outbound to Coolidge Corner.

FANEUIL HALL MARKETPLACE, QUINCY MARKET, AND THE BOSTON PUBLIC MARKET

Directions: Green Line inbound to Haymarket.

HARVARD SQUARE, CAMBRIDGE

Directions: Green Line inbound to Park Street; change to Red Line outbound and go four stops to Harvard Square.

401 PARK (LANDMARK CENTER)

Directions: Start at Marsh Chapel and cross Commonwealth Avenue. Walk up St. Mary’s Street (across the bridge), make a left, and continue along Park Drive, bearing right. Cross Beacon Street, walk over the bridge, and the center will be on your left. Includes: Time Out Market, Blick Art Materials, REI, Target, and more.

PRUDENTIAL CENTER

Directions: Take any Green Line inbound to Hynes Convention Center or Copley Square.

CAMBRIDGESIDE GALLERIA

Directions: Take any Green Line inbound to Park Street. Disembark and wait on the same platform for the Green Line train to Lechmere Station. Disembark at Lechmere, walk to 1st Street, take a right, and continue to the Galleria.

COPLEY PLACE

Directions: Take any Green Line inbound to Copley Square.

DOWNTOWN CROSSING

Directions: Take any Green Line inbound to Park Street. Exit station and cross Tremont Street to Winter Street. Walk down Winter Street to Washington Street.

NEWBURY STREET

Directions: Take any Green Line inbound to Hynes Convention Center.



Places to Eat

Boston and its surrounding municipalities offer a wide range of cuisines and dining options for all budgets. Here are a few to start:

ANNA'S TAQUERIA

Visit this locally owned taqueria for the best burritos in Boston.

Directions from Kenmore Square: Take Green Line "C" train outbound to Coolidge Corner station in Brookline.

FANEUIL HALL MARKETPLACE, QUINCY MARKET, AND THE BOSTON PUBLIC MARKET

This area boasts shops, restaurants, street performers, and atmosphere. For shopping or people watching, this is one of the most popular places in Boston. Be sure to also visit the new Boston Public Market, a permanent market of 40 vendors featuring fresh, locally sourced food.

Directions: Green Line inbound to Government Center or Haymarket.

HIGH STREET PLACE

This food hall offers a diverse mix of food vendors, with options ranging from seafood and burgers to gelato and cannoli.

Directions: Green Line inbound to Park Street, then a short walk to 100 High Street.

THE NORTH END

This neighborhood of Boston is considered the place to go for Italian food, with dozens of incredible restaurants and cafés. Be sure to visit Mike's Pastries for delicious cannoli, macaroons, gelato, and other treats. For a restaurant list and directions, please see meetboston.com/plan/boston-neighborhoods/north-end.

Directions: Green Line inbound to Government Center or Haymarket.

TIME OUT MARKET

One of just seven Time Out Markets in the world, featured food options at the Boston location include gourmet donuts, Asian-inspired bowls, Neapolitan-style pizza, and authentic Mexican fare.

Directions: Start at Marsh Chapel and cross Commonwealth Avenue. Walk up St. Mary's Street (across the bridge), make a left, and continue along Park Drive, bearing right. Cross Beacon Street, walk over the bridge, and Time Out Market will be on your left.

For additional information about the city of Boston, check out these websites:

bu.edu/summer/boston

boston.com

downtownboston.org



Course Codes

All Summer Term courses are assigned a College and departmental code, a three-digit course number, and a section identifier. For example, CAS EC 101S A1 means that the course is offered in the College of Arts & Sciences (CAS), by the Economics department (EC). The course number 101 indicates it is an introductory course, the S indicates it is a summer course, and section A1 indicates that it is offered in Summer 1. Graduate-level courses have course numbers above 500.

Section Codes

- Session 1 courses carry an A (A1, A2, A3) section designation
- Session 2 courses carry a B (B1, B2, B3) section designation
- 12-week courses carry a C (C1, C2) section designation
- Online courses carry an O (OL, O1, O2) section designation

Course Numbers

Course Number Level

000-099 Nondegree credit
100-199 Introductory or general undergraduate
200-299 Intermediate undergraduate
300-499 Advanced undergraduate
500-599 Advanced undergraduate, graduate
600-799 General graduate
800-899 Advanced graduate
900-999 Advanced graduate, directed study, and research

Building Codes and College Abbreviations

Code	Description	Address
AAS	African American Studies	138 Mountfort Street
AGG	Agganis Arena	925 Commonwealth Avenue
ASC	Academic Support Center	300 Babcock Street
BRB	Biology Research Building	5 Cummington Mall
BSC	Biological Science Center	2 Cummington Mall
CAS	College of Arts & Sciences	685-725 Commonwealth Avenue
CDS	Center for Computing & Data Sciences	665 Commonwealth Avenue
CFA	College of Fine Arts	855 Commonwealth Avenue
CGS	College of General Studies	871 Commonwealth Avenue
CLN	Clinical Psychology	900 Commonwealth Avenue
CNS	Cognitive & Neural Systems	677 Beacon Street
COM	College of Communication	640 Commonwealth Avenue
CRW	DeWolfe Crew Boathouse	619 Memorial Drive
CSE	Case Physical Education Center	285 Babcock Street
EGL	English Faculty Offices	236 Bay State Road
EIB	Editorial Institute Building	143 Bay State Road
EIL	Eilberg Lounge (Case Center)	285 Babcock Street
EMA	Engineering Manufacturing Annex	730 Commonwealth Avenue
EMB	Engineering Manufacturing Building	15 St. Mary's Street
ENG	College of Engineering	110-112 Cummington Mall
EOP	Center for English Language & Orientation Programs	890 Commonwealth Avenue
EPC	Engineering Product Innovation Center (EPIC)	750 Commonwealth Avenue
ERA	Engineering Research Annex	48 Cummington Mall
ERB	Engineering Research Building	44 Cummington Mall
FAB	Fenway Activities Building	180 Riverway
FCB	Fenway Classroom Building	25 Pilgrim Road
FCC	Fenway Campus Center	150 Riverway

FLR	Fuller Building	808 Commonwealth Avenue
FOB	Faculty Office Building (Alden Hall)	704 Commonwealth Avenue
FRC	Fitness & Recreation Center	915 Commonwealth Avenue
GDP	Global Development Policy Center	53 Bay State Road
GMS	Graduate Medical Sciences	72 East Concord Street
GRS	Graduate School of Arts & Sciences	705 Commonwealth Avenue
GSU	George Sherman Union	775 Commonwealth Avenue
HAR	Rafik B. Hariri Building (Questrom School of Business)	595 Commonwealth Avenue
HAW	Hawes Building	43 Hawes Street, Brookline
HIS	History & American Studies Departments	226 Bay State Road
IEC	International Education Center	888 Commonwealth Avenue
IRB	International Relations Building	154 Bay State Road
IRC	International Relations Center	152 Bay State Road
JSC	Elie Wiesel Center for Jewish Studies	147 Bay State Road
KCB	Kenmore Classroom Building	565 Commonwealth Avenue
KHC	Kilachand Honors College	91 Bay State Road
LAW	Law School	765 Commonwealth Avenue
LEV	Leventhal Center	233 Bay State Road
LNG	Romance Studies, Modern Foreign Languages & Comparative Literature	718 Commonwealth Avenue
LSE	Life Science & Engineering Building	24 Cummington Mall
MCH	Marsh Chapel	735 Commonwealth Avenue
MCS	Math & Computer Science	111 Cummington Mall
MED	Aram V. Chobanian & Edward Avedisian School of Medicine	715 Albany Street
MET	Metropolitan College	1010 Commonwealth Avenue
MOR	Morse Auditorium	602 Commonwealth Avenue
MUG	Mugar Memorial Library	771 Commonwealth Avenue
PDP	Physical Development Program	915 Commonwealth Avenue
PHO	Photonics Building	6-8 St. Mary's Street
PLS	Anthropology, Philosophy, Political Science	232 Bay State Road
PRB	Physics Research Building	3 Cummington Mall
PSY	Psychological & Brain Sciences	64-72-86 Cummington Mall
PTH	Playwrights' Theatre	949 Commonwealth Avenue
REL	CAS Religion	145 Bay State Road
RKC	Rajen Kilachand Center for Integrated Life Sciences & Engineering	610 Commonwealth Avenue
SAC	Sargent Activities Center	1 University Road
SAL	Sailing Docks	Charles River Behind BU Bridge
SAR	College of Health & Rehabilitation Sciences: Sargent College	635 Commonwealth Avenue
SCI	Metcalf Science Center	590-596 Commonwealth Avenue
SDM	Henry M. Goldman School of Dental Medicine	100 East Newton Street
SHA	School of Hospitality Administration	928 Commonwealth Avenue
SLB	Science Library Building	30-38 Cummington Mall
SOC	Sociology	96-100 Cummington Mall
SPH	School of Public Health	715 Albany Street
SSW	School of Social Work	264-270 Bay State Road
STH	School of Theology	745 Commonwealth Avenue
STO	Stone Science Building	675 Commonwealth Avenue
THA	Joan & Edgar Booth Theatre	820 Commonwealth Avenue
TTC	Track & Tennis Center	100 Ashford Street
WEA	Wheelock College of Education & Human Development Annex	621 Commonwealth Avenue
WED	Wheelock College of Education & Human Development	2 Silber Way
YAW	Yawkey Center for Student Services	100 Bay State Road

Campus Resources

These are a few of the many resources you can take advantage of on campus this summer. Check the websites for business hours and other details.

Barnes & Noble @ Boston University

910 Commonwealth Avenue
617-267-8484
bksbu@bncollege.com
bu.bncollege.com

Blackboard Learn

bu.edu/learn

BU Directory

617-353-2000
bu.edu/directory

BU Diversity & Inclusion

1 Silber Way, 8th Floor
617-353-2230
odi@bu.edu
bu.edu/diversity

BU Libraries

771 Commonwealth Avenue
617-353-2700
ask@bu.edu
bu.edu/library

Convenience Points

Use your student ID to make purchases on campus. Buy points on the MyBU Student Portal. bu.edu/housing/living/dining/convenience

Disability & Access Services

25 Buick Street, Suite 300
617-353-3658
access@bu.edu
bu.edu/disability

Educational Resource Center (ERC)

100 Bay State Road, 6th Floor
617-353-7077
erc@bu.edu
bu.edu/erc

Financial Assistance

881 Commonwealth Avenue
617-353-2965
finaid@bu.edu
bu.edu/finaid

Fitness & Recreation Center (FitRec)

915 Commonwealth Avenue
617-358-3740
fitrec@bu.edu
bu.edu/fitrec

George Sherman Student Union (GSU) & Food Court

775 Commonwealth Avenue
617-353-5498
bu.edu/dining/location/gsu-food-hall

Housing Office

25 Buick Street
617-353-3511
sumhouse@bu.edu
bu.edu/housing/summer

Howard Thurman Center for Common Ground (HTC)

808 Commonwealth Avenue
617-353-4745
thurman@bu.edu
bu.edu/thurman

International Student & Scholars Office (ISSO)

888 Commonwealth Avenue,
2nd Floor
617-353-3565
isso@bu.edu
bu.edu/isso

IT Help Center

617-353-HELP (4357)
ithelp@bu.edu
bu.edu/tech

- Mugar Library:
771 Commonwealth Avenue
- West Campus:
179 Amory Street, Brookline

MyBU Student Portal

student.bu.edu/MyBU

Newbury Center

755 Commonwealth Avenue,
Suite B18
617-353-3400
newburycenter@bu.edu
bu.edu/newbury-center

Parking & Transportation Services

1019 Commonwealth Avenue
617-353-2160
parking@bu.edu
bu.edu/parking

Police Department (Boston University Police)

32 Harry Agganis Way
617-353-2121 (emergency)
617-353-2110 (non-emergency)
bupolice@bu.edu
bu.edu/police

Registrar

881 Commonwealth Avenue
617-353-3612
registrar@bu.edu
bu.edu/reg

Student Accounting Services

25 Buick Street, Suite 130
617-353-2264
studenta@bu.edu
bu.edu/studentaccountingservices

Student Health Services

881 Commonwealth Avenue
617-353-3575
bu.edu/shs

Summer Term

200 Riverway, Suite 114
617-353-5124
summer@bu.edu
bu.edu/summer

Terrier Card Office

25 Buick Street, 1st Floor
617-353-9966
tco@bu.edu
bu.edu/housing/services/terriercards

The Fresh Food Co. at Marciano Commons

100 Bay State Road
617-358-6977
dining@bu.edu
bu.edu/dining/location/Marciano

Photo Contest

Capture the Essence of “Summer” at BU

Boston University Summer Term is pleased to continue its annual photo contest.

From studying and recreation to campus landmarks and social activities, we want to see your Summer Term experience.

The Summer Term Photo Contest is open to Boston University students, faculty, and staff. Winning entries will be featured in our summer calendar and winners will receive some BU swag.

Requirements:

File Type: JPEG

Photo Resolution: 300 dpi

Minimum image size: 3900 x 3900 pixels

Maximum file size: 10 mb

Maximum number of entries per person: 5

Submission Guidelines:

Attach entries via email to the Summer Term office: summer@bu.edu. In the email, include your first and last name, email address, and BU ID number.

Photos may be submitted from May 23, 2023, until September 1, 2023.

Contest participants and people in photos must be 18 or older. By submitting a photo you permit Boston University to use the image in educational and promotional materials in any medium.

Questions?

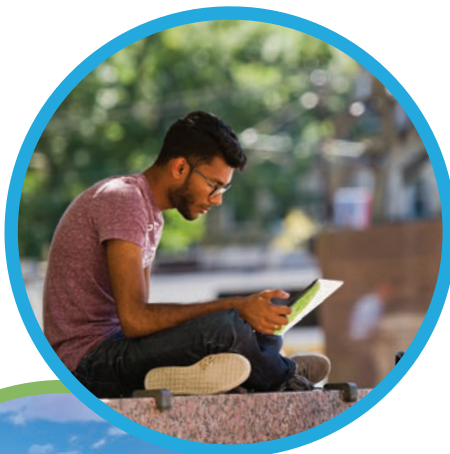
Contact Boston University Summer Term

200 Riverway, Suite 114

Boston, MA 02215

Phone: 617-353-5124


Email: summer@bu.edu



BU Summer Term 2023 Important Dates*

	Summer 1 May 23–June 30	Summer 2 July 5–August 15	Twelve-Week Session May 23–August 15
Classes Begin	Tuesday, May 23	Wednesday, July 5	Tuesday, May 23
Payment Deadline	Tuesday, May 23	Wednesday, July 5	Tuesday, May 23
Last Day for Refund of Student Services Fee and Lab Fees	Tuesday, May 23	Wednesday, July 5	Tuesday, May 23
Late Payment Fees Begin	Wednesday, May 24	Thursday, July 6	Wednesday, May 24
Last Day for Any Tuition Credit (Tuition Refunds after This Date)	Tuesday, May 30	Tuesday, July 11	Tuesday, June 6
Last Day to Register/Add Courses/Audit	Tuesday, May 30	Tuesday, July 11	Tuesday, June 6
Last Day to Drop Courses without a “W” Grade	Tuesday, May 30	Tuesday, July 11	Tuesday, June 6
Holiday, Classes Suspended	Monday, May 29 & Monday, June 19		Monday, May 29 & Monday, June 19 & Tuesday, July 4
Substitute Schedule of Classes (Monday Schedule)	Friday, June 2 & Friday, June 23		Friday, June 2 & Friday, June 23
Last Day to Drop Courses with a “W” Grade	Thursday, June 15	Friday, July 28	Tuesday, July 11
Final Examinations	Last Class Meeting	Last Class Meeting	Last Class Meeting
Last Day of Classes	Friday, June 30	Tuesday, August 15	Tuesday, August 15

*This calendar applies only to standard Summer Term courses that take place on the Charles River Campus. The dates do not apply to courses in the Questrom School of Business Graduate Program, the School of Public Health, or to courses in online degree programs. Details about the dates for nonstandard courses can be found alongside course descriptions at bu.edu/summer/courses.

A decorative dotted line in a light gray color starts from the bottom left, curves upwards and to the right, and then continues horizontally across the bottom right of the page.

Photos courtesy of Vernon
Doucette, Cydney Scott, Kalman
Zabarsky, Shutterstock.com, and BU
Photography, except where noted.

An equal opportunity, affirmative
action institution. 05/23