

40 YEARS OF PUBLIC HEALTH

MAKING A DIFFERENCE IN THE REAL WORLD.

 SPH DONOR RECOGNITION **2016**



DEAR FRIENDS:

IN JANUARY 2016 we launched Boston University School of Public Health’s 40th anniversary celebrations. Over the past year we have had more than 40 celebrations across the country and around the world. It is a pleasure to thank you all for your participation and enthusiasm at these events. It has truly been a remarkable year for the School.

I am tremendously grateful to the alumni and friends of the School who invested their time and resources toward advancing our mission of creating the conditions that improve the health of all, especially vulnerable populations. Contributions—large and small—truly make a difference in strengthening the School as an agent of change in the world.

There are 10 key ways that philanthropy helps to move our work forward. Please refer to our brief summary at right.

These opportunities align with Think, Teach, Do: the School’s three axes of inspiration. We generate knowledge (think), we educate (teach), and we aim to create healthier populations (do).

The following pages illustrate some of the 10 ways that benefactors have stepped up to support SPH.

We are engaging in the issues that advance the public’s health and are committed to having an impact on the most compelling public health challenges of our time.

Having met many of you at alumni dinners and receptions over the past year, I have been repeatedly struck by how many members of our community—alumni, faculty, staff, and students—are engaged in work that aspires to create a better, healthier world.

Thank you for all your work and for your support of the School.

Warm regards,

Sandro Galea, MD, DrPH
Dean, Robert A. Knox Professor
Boston University School of Public Health

A BRIEF SUMMARY OF HOW THESE FUNDING OPPORTUNITIES HELP THE SCHOOL:

Investment in the Future of Public Health Fund: Flexible funding that allows us to launch innovative new programs and to seize bold opportunities as we strive to become an institution of excellence.

Big Ideas: Funding that advances our core areas of research: urban living, aging and well-being, health across the lifecourse, and health systems improvement.

Innovation Incubator: Creating the conditions for faculty and students to develop innovative ideas that promote population health.

Faculty Scholarship: Catalyzing cutting-edge progress in new areas of public health research.

Student Scholarship: Attracting talented future public health leaders with strong academic credentials and a passion for service.

Global Student Engagement Fund: Creating opportunities for students to participate in research, education, and practice opportunities globally.

Population Health Exchange: Generating lifelong learning opportunities for practitioners and scholars.

Activist Lab: Engaging issues that are of direct relevance to the practice of public health.

Public Health Post: Communicating powerful population health stories to engage influencers to lead change toward creating conditions for good health for all.

Dean’s Level Events: Programming that includes Public Health Fora, Dean’s Seminar Series on Contemporary Issues in Public Health, and Dean’s Symposia.

2017 ALUMNI EVENTS MARK YOUR CALENDARS!

January 11, 2017

Alumni Reception in San Francisco, CA

Coincident with the JPMorgan Chase Conference

March 16, 2017

Alumni Reception in Washington, DC

Coincident with ASPPH Annual Conference

March 28, 2017

Alumni Reception in Chicago, IL

Coincident with ACHE Annual Conference

April 3, 2017

Alumni Reception in New York, NY

May 8, 2017

Alumni Reception in Boston, MA

June 8, 2017

Alumni Reception in Miami, FL

June 22, 2017

Alumni Reception in Seattle, WA

Coincident with SER Annual Conference

November 6, 2017

Alumni Reception in Atlanta, GA

Coincident with APHA Annual Conference

➤ Stay up to date on all alumni events by visiting our website at bu.edu/sph/alumni.

DOUBLE YOUR IMPACT!

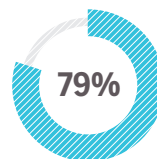
MANY EMPLOYERS SPONSOR matching gift programs and will match charitable contributions made by their employees—doubling or even tripling the impact. Check with your human resources department on this policy. Organizations that have supported SPH in the past through this program include Ben & Jerry's Foundation, Cubist Pharmaceuticals, Duke Energy Corporation, Merck & Company, Inc., Pzifer, Inc., UnitedHealth Group, and W.K. Kellogg Foundation.

THIS PAST YEAR

➔ **In celebration of SPH's 40th anniversary**, the School held more than 40 alumni dinners and receptions, which were attended by more than 1,500 alumni across the country and the world.

➔ **Giving to the** Investment in the Future of Public Health Fund rose by 19 percent.

➔ **As a school**, we have raised \$47.2 million, which is 79 percent of the way toward our \$60 million campaign goal.



➔ **Since the campaign's** launch in 2010, five members of the SPH community have established endowed student scholarships.

➔ **BU's annual Giving Day** on April 6, 2016, generated more than \$30,000 from more than 160 donations to SPH. As a school, we more than doubled our revenue from last year. Heather Pierce (SPH'02) generously matched Giving Day donations.

➔ **Founding Chair** of the former Department of Epidemiology & Biostatistics Theodore Colton retired after serving SPH for 36 years. Colton, along with Professor Adrienne Cupples, established the Colton-Cupples Visiting Scholars Fund in the Department of Biostatistics. Gifts in honor of Colton can be made to the Colton-Cupples Visiting Scholars Fund (see page 4 for details).

➔ **On November 17, 2016**, at the State Room in Boston, SPH held its first gala celebration in honor of the School's 40th anniversary.

INVESTMENT
IN THE FUTURE
OF PUBLIC
HEALTH FUND

INVEST IN THE FUTURE OF PUBLIC HEALTH

A simple and effective way to support SPH is by making a gift to the Investment in the Future of Public Health Fund, which provides flexible support directed to the School's most important needs. Students and faculty who benefit from fund gifts advance the health of populations today and tomorrow, throughout the United States and around the world. The dean identifies areas of greatest need, and Investment in the Future of Public Health Fund gifts go directly into programs for immediate impact, with no administrative or overhead costs.

THE INVESTMENT IN THE FUTURE OF PUBLIC HEALTH FUND SUPPORTS:

■ STUDENT SCHOLARSHIP

SPH attracts talented applicants with strong academic credentials and passion for public health service. Scholarships and financial aid decrease tuition for many deserving SPH students and enable them to afford an outstanding SPH education. In addition, several schools often try to recruit competitive students; Investment in the Future of Public Health Fund scholarship support can be a crucial factor for these students in choosing to attend SPH.

■ FACULTY RESEARCH

The Investment in the Future of Public Health Fund provides support for faculty pilot studies that catalyze pioneering progress in new areas of public health research. This support initiates competitive grant applications by supporting data collection, analysis, and reporting.

■ INNOVATIVE PROGRAMS TO ADVANCE THE SCHOOL'S MISSION

SPH aims to improve the health of populations, particularly the disadvantaged, underserved, and vulnerable, through excellence and innovation in education, research, and service. The Investment in the Future of Public Health Fund provides seed money to launch cutting-edge programs that allow us to innovate in teaching and in our efforts to create useful knowledge that can inform and influence the public health conversation.

➤ Visit bu.edu/sph/give to make your gift today.

WHY I GIVE



THE SPH COMMUNITY LAID THE FOUNDATION on which I am solidly built. Giving back is my contribution; my thank-you.

I am grateful I felt that sense of community from the very first day on the SPH campus. The faculty and staff devoted an incredible amount of resources to bring out the best in me, and the immediate camaraderie I felt with my classmates was energizing and exciting. As I continue my public health career, I continue to draw inspiration from my SPH family. I am constantly motivated to find new ways to collaborate and to foster innovation to reshape our healthcare system.

I give back because I have been given so much. My support is an investment in the SPH community. I am investing in promising students and professors from all over the world, with the hope of realizing long-term returns in the form of a healthier, safer, and more peaceful world. I believe through education comes the greatest hope of realizing the fullest human potential. As an SPH alumna, I believe each of us plays an important part in continuing to build our community and to stay attached to the vision of igniting positive change in the world. Giving back builds hope—and when there is hope, there is always a future.

—Vivian Cabral (SPH'97), Program Manager, UCLA-UCI Alpha Stem Cell Clinic, Eli and Edythe Broad Center of Regenerative Medicine and Stem Cell Research, University of California, Los Angeles

A PARTNER IN EDUCATION, RESEARCH, AND PRACTICE

JOEL LAMSTEIN says he supports SPH for the same reason he co-founded the public health management consulting and research organization John Snow, Inc. (JSI), of which he is also president: to help improve the health of individuals and communities here in the US and around the world.

In 2012, Lamstein committed to permanently endowing the Lamstein Family/JSI Scholarship, which supports one or more annual scholarship awards for MPH students at SPH based on financial need and academic merit.

Lamstein, who chairs the SPH Dean's Advisory Board, says that JSI and the School

"have been long-term partners in education, research, and practice."

"We have been fortunate to grow and thrive for over 35 years, and much of our success can be attributed to our ability to attract smart, committed, and compassionate staff," Lamstein says of JSI. "We draw that staff from elite schools throughout the country and always have had great success with students from Boston University School of Public Health. I believe it is therefore incumbent on organizations like JSI to give back to the community that has helped foster their success."

Lamstein is also president of World Education, Inc., a non-

Joel Lamstein on his visit to the AIDS/HIV Model Integrated Programme (AIM) in Uganda, 2002



the Lewis Family Foundation and presented by the *Boston Business Journal*. He holds a BS in Math and Physics from the University of Michigan and attended the MIT Sloan School of Management.

Lamstein also serves on the advisory board of the University of Michigan School of Public Health as well as the boards of Physicians for Human Rights and Seed Global Health and the advisory council of the Children's Health Fund in New York City. From 2004 to 2012, he served on the board of the Global Health Council.

"Global health has gained wide popularity among students in academic settings, and public health will be in good hands as these students join the field," he says. "We therefore are pleased to contribute to SPH to help further the aspirations of these future leaders of public health."

profit organization dedicated to improving the lives of children and adults in 22 countries through education and economic and social development programs. In 1973, Lamstein co-founded Management Sciences for Health (MSH), a private, nonprofit international organization working in public health areas to strengthen healthcare management and improve access. He is a senior lecturer at the Harvard T.H. Chan School of Public Health and has lectured at schools of public health throughout the country.

In 2009, Lamstein received the CEO Social Leadership Award, a program funded by

MATCHING GIFT CHALLENGE



IN 2016, Founding Chair of the former Epidemiology and Biostatistics Department Theodore Colton and Adrienne Cupples established the Colton-Cupples Visiting Scholars Fund in the Department of Biostatistics to bring nationally and internationally renowned leaders in the field to the department. The scholars will present a series of lectures and conduct seminars with faculty and students, and also meet with them individually in informal settings that allow for personalized interaction, dialogue, and the exchange of ideas.

To inspire giving to the newly established Visiting Scholars Fund, Colton and Cupples have announced a matching gift challenge. They will generously match contributions to the fund up to a total of \$12,000.

➤ Make your gift online at bu.edu/sph/alumni/colton-cupples or contact **Arielle Fischer**, donor relations coordinator, at asf22890@bu.edu or 617-638-4658 for more information.

FACULTY
SCHOLARSHIP

SUPPORTING INNOVATION

WHEN IT COMES TO SUPPORTING institutions and organizations, Ruth Moorman and Sheldon Simon have a strategy. "The first thing that we look for is the cause," says Simon. "The second thing that we look at is the individual. And the third is the institution itself."

In December 2015, the couple made a gift to SPH's Innovation Incubator, which supports and encourages creative and cross-school projects to improve the health of populations. It also provides grants for researchers early in their careers to launch pilots and proof of concept efforts and to seed first stages in program development.



First, the cause: "We've always supported hospitals and medical research," says Moorman.

"Public health exists at the center of a triangle between the healthcare system, public policy, and citizenship," says Simon, a partner and equity analyst at Adage Capital Management, L.P. and co-chairman and founder of the Men's Collaborative to Cure Women's Cancers at the Dana-Farber Cancer Institute.

"That's what makes public health interesting," Moorman says. "It's that work at the intersection."

Second, the people: the couple agrees that meeting Dean Sandro Galea was what initially drew them in. "It's important to invest in people, and Sandro's a good investment," Moorman says.

"We liked his enthusiasm and his energy," says Simon, who has also joined the Dean's Advisory Board, a group of prominent alumni and friends of SPH that works with Dean Galea and other School leaders on strategy and resource development. "Through Sandro we re-learn the importance of public health," he says.

Moorman notes that supporting young researchers is especially rewarding. "It's fun to see where your investment goes, and it's fun when it's in the beginning projects, when they're being creative," she says. "It's more exciting than something that's already established. This is investing in creativity."

Finally, the institution: Moorman and Simon have quite the BU family. Moorman is incoming vice chair of the Boston University Board of Overseers and an alumna of the College of Arts & Sciences and School of Education (she earned a doctorate from the latter), while their younger daughter graduated from BU Academy in 2015. Moorman and Simon also each have sisters who are BU alumnae.

"BU has become an important institution to us," says Simon. With the cross-sector nature of public health, he says, SPH is in an exceptional position to bridge the schools of BU.

Says Moorman, "It all intersects in public health."

They're also excited to support SPH due to its trajectory. "They've done a tremendous job in 40 years," says Moorman. "They've made an imprint on this city, nationally, and globally."

Their donation "is a vote of confidence and support," she explains, and says she hopes they have set an example for others: "I think that's part of the job of our leadership roles at BU."

SUPPORTING OUR FACULTY



DEAN ROBERT F. MEENAN stepped down in December 2014 after leading Boston University School of Public Health for 22 years. Since then, many alumni, friends, and colleagues joined together to establish the Robert F. Meenan Faculty Support Fund, which supports competitive pilot research grants to be awarded annually to junior faculty.

These grants will help provide early-stage career development support for younger faculty who are establishing their research portfolios.

Dr. Meenan is "delighted that the generosity of all those who made gifts to his named fund will catalyze the research of new faculty entering the field of public health."

➤ If you wish to make a gift in honor of Dr. Meenan, please contact **Arielle Fischer**, donor relations coordinator, at asf22890@bu.edu or 617-638-4658. Or you can make your gift online at bu.edu/sph/give.



A CONVERSATION WITH LESLIE TELLALIAN, DIRECTOR OF LIFELONG LEARNING

PUBLIC HEALTH IS A DYNAMIC FIELD with a perennial need for lifelong training in new tools and techniques. Both personally and via the alumni survey, our alumni have shown overwhelming interest in the learning opportunities and resources—especially the ones online—available through SPH. To answer that call, the education department has created the Lifelong Learning program.

Lifelong Learning head Leslie Tellalian, previously director of graduate programs at the College of Engineering, was also with Harvard University's School of Engineering & Applied Sciences before returning to BU.

As her first order of business at SPH, Tellalian is

leading the development of a digital portal called Population Health Exchange (PHX) to house Lifelong Learning's programs, including both for-credit and not-for-credit courses, online and in-person experiences, workshops, and training.

Tellalian talked with us about PHX, collaboration, and serving the needs of SPH alumni across sectors and around the world.

What opportunities/developments in Lifelong Learning are you most excited about?

I am most excited to help develop a dynamic and robust platform for ongoing learning, engagement, and community building. PHX has the potential

to continue raising the profile of the exceptional work being done across SPH by our faculty, students, and alumni, while also facilitating the understanding and application of public health principles across a range of professions.

I am also looking forward to working with everyone here, supporting the great opportunities for collaboration across SPH, the University, and the professional community in creating and delivering innovative in-person and online learning programs. Whether it's a live-streamed event with a subject matter expert, a program on data analytics or leveraging social media to improve public health, or a workshop on developing online field tools, there is

ample expertise, interest, and commitment for SPH to be a key resource for serving lifelong learners.

How does the Lifelong Learning program fit into the goals of SPH—or even BU—more broadly?

Dean Galea's vision—and I believe BU is much on the same page as well—is to greatly increase opportunities for integration and collaboration across sectors. For SPH, this goal includes providing a broader view of public health to include economic, social, and contextual factors that affect health. By providing a forum for academic and professional experts to deliver topical, timely, and practical learning opportunities to an audience across a range of professions, we are supporting our goal of preparing people for a lifetime of engagement with the health of populations.

What are the next steps going forward for Lifelong Learning?

We are focused on developing and delivering engaging and useful learning experiences to people near and far via the PHX portal and our Lifelong Learning programs. There is so much we look forward to doing, and we want to be very thoughtful about how we start, build, and grow our offerings to ensure we are successfully meeting the professional interests of our alumni, peer professionals, external organizations, and the surrounding community. We are currently working on and excited to present our first SPH summer institute in 2017. There will be more to share soon on these program offerings and how people can participate.

LITTLE THINGS THAT DRIVE GREAT CHANGE: A CONVERSATION WITH DONATO TRAMUTO



CHIEF EXECUTIVE OFFICER OF HEALTHWAYS, INC. since 2015, Donato J. Tramuto is a recognized innovator, industry leader, and global healthcare activist.

Tramuto joined Healthways' board in 2013 and became chairman in 2014. In 2008, he founded Physicians Interactive Holdings (now Aptus Health, a subsidiary of Merck following the company's sale in 2013), a global provider of digital engagement solutions, where he served as chairman and CEO. In 2011, Tramuto founded the nonprofit Health eVillages to provide mobile health technology in challenging clinical environments. He is also chairman and founder of the Tramuto Foundation, which helps individuals and organizations achieve educational and healthcare goals.

In 2014, Tramuto received the prestigious Robert F. Kennedy Ripple of Hope Award for his commitment to social change; the following year, he was awarded an honorary doctorate from the University of Massachusetts at Lowell. In 2005, 2009, and 2015, *PharmaVOICE* recognized him as one of the top 100 most inspirational healthcare leaders.

Tramuto recently published a book, *Life's Bulldozer Moments: How Adversity Leads to Success in Life and Business*.

Tramuto serves on several executive leadership boards, including the Dean's Advisory Board of SPH.

In 2013, the Tramuto Foundation endowed a scholarship fund at SPH to provide support for outstanding international students close to completing the MPH degree.

Tramuto spoke with us about his support for SPH.

What led to your endowing a scholarship for international students pursuing their master's in public health at SPH?

This opportunity had three very important elements. First, as the founder of Health eVillages, a global nonprofit organization enabling safe and efficient medical care in the most challenging clinical environments, the global aspect of this endowment was very attractive to me.

Second, as the founder of the Tramuto Foundation, an organization that reaches out to young people who have had challenges in their life, and as someone who has overcome many challenges myself, I can relate to providing assistance to these students at a critical time in their education. I lived for many years in isolation

as a result of having lost a significant amount of my hearing at age 8. I went through a long, dark period of having a disability, and having many people believe that I would not amount to anything in life. In my book *Life's Bulldozer Moments: How Adversity Leads to Success in Life and Business*, I highlight the tenacity and resilience that we as individuals innately have within ourselves. What we all need are the right antecedents and opportunities to pursue our dreams, hence, I felt that this scholarship tied in nicely with my own values.

Last but not least, I've had a remarkable career, one that nobody ever thought would be realized because the many losses in my life could have prohibited my success. I not only lost my hearing during childhood, but also lost my brother, and later my nephew, in car accidents. My sister-in-law, who was also my speech therapist after I partially regained my hearing, died in childbirth. My grandfather was shot at his home in a robbery. And, two close friends and their three-year-old son lost their lives on 9/11, on a flight that I should have been on but wasn't because I ended up leaving the night before. All of these challenges have made me realize that it's not about doing great things, it's about doing little things that have the capacity to drive great change. I saw this scholarship as a small gesture that would allow the School of Public Health to continue its great mission and vision in making the world more just and fair.

What makes SPH special to you?

Our lives are not segmented, nor are institutions. They are dynamic. What a student stands to receive from BU is a sense of caring, a sense of purpose, a sense of commitment.

I'm very impressed with Dr. Galea and his keen intellect and sense of purpose, as well as his desire to do the right thing for students to encourage them, empower them, hold them accountable, and to make the world better for all humanity. That's terrific. I have seen elements of those variables in other organizations, but I have not seen any other organization integrate all of them so that you have a dynamic experience.

I think whoever goes to the School of Public Health is fortunate! I sense the fervor of kinship every time I'm there for a board meeting—I'm enlightened, I'm charged up, and I feel that energy and that passion. The key ability of one to listen, to ensure that we do the right thing and we don't just do things right, is terrific, and I think that's what any student who's so fortunate to be associated with the School of Public Health will experience.

If someone told you they were considering giving to SPH, what would you tell them?

Everybody should make an effort to make the world a better place in whatever way they can. It's not about how much you give, it's about the fact you gave. It's not about how much you do, it's the fact that you did something, and that's how I live my life.

I know a lot of people will say, "Well, if you didn't have this success—" and I say, wait a minute, when I was not successful, I still had these key values. We have to all acknowledge and recognize that if we each just did a little something, this world would be so amazing.

FOUR DECADES FORWARD

In 2016, the School of Public Health celebrated its 40th anniversary in a year filled with more than 40 alumni dinners and receptions attended by more than 1,500 alumni from around the world.



- 1 Distinguished 2015 Alumni Award Winners Lois Simon (SPH'83), Khalil Memon (SPH'99), and Vivian Cabral (SPH'97) at the APHA Alumni Reception in Chicago with Dean Galea
- 2 Gayle Mendoza (SPH'08), Rachel Gaddes (SPH'06), Sindri Kinnier (Questrom'15, SPH'15), and Alicia Kimbrel (SPH'08) at the ASPPH Alumni Reception in Washington, DC
- 3 Alumni Dinner in Geneva, Switzerland
- 4 Alumni Reception in New York City
- 5 & 6 Alumni Reception in Miami, FL
- 7 SPH students enjoying the photo booth at the 40th Anniversary Kick-Off Celebration in Boston
- 8 Benjamin Spozio (SPH'12), Abiola Lawson (SPH'13), Benjamin Penningroth (SPH'15), and Lianne Hope (SPH'14, SSW'14) at the 40th Anniversary Kick-Off Celebration in Boston
- 9 Members of the SPH Dean's Advisory Board Jeannine Rivet (SPH'81) and Sheldon Simon at the 40th Anniversary Kick-Off Celebration in Boston
- 10 SPH graduates at the 2016 Convocation at Agganis Arena
- 11 Student speaker Faiz Kidwai (SPH'16) at the 2016 Convocation at Agganis Arena
- 12 Alumni Reception in San Francisco, CA

SANTANDER SCHOLARS PROGRAM

PUTS STUDENTS IN THE FIELD

Taking on gender-based violence in Tanzania. Studying acute kidney injury in Cambodia. Supporting pharmaceuticals courses in South Africa. Launching a public health consultancy in Vietnam.

These are just four of the student practicum experiences made possible by the Santander Scholars Program in summer 2016.

For the last six years, a partnership between Santander Bank and Boston University has provided support for practicums in the Field Practice Program of the Department of Global Health. The Santander Scholars Program has supported 307 SPH students on international practicums in 48 countries, experiences that help prepare these students to make an impact around the world.

Haley Tupper: Cambodia

A SANTANDER SCHOLARSHIP SUPPORTED Haley Tupper (SPH'16) as she studied acute kidney injury (in which kidneys stop functioning for any number of reasons) at two hospitals in Phnom Penh. Few hospitals in the country are equipped for dialysis—and few Cambodians can afford it. “If you have end-stage renal disease in Cambodia, for most people it’s a death sentence,” Tupper says.

While quantifying the issue and looking for ways to prevent acute kidney injury in the first place, Tupper says the practicum also provided a tremendous opportunity to learn about the country’s healthcare system through the two hospitals, Calmette Hospital and Khmer-Soviet Friendship Hospital. Tupper, who began medical school this fall and hopes to practice nephrology abroad, says that was a tremendous learning experience: “I got to see things I learned about in my health systems class in real life.

“I’m in a much better position to organize and do a quality study in another country at a similar level of development, which is huge,” she adds.

Lindsay White: Vietnam

A PRACTICUM IN VIETNAM gave Lindsay White experience across the spectrum of in-country public health work.

White’s practicum began as an evaluation of mobile Continuing Medical Education (mCME) among HIV clinicians, part of a project using daily text messages to encourage Vietnamese healthcare workers to study. Pathfinder International began the project in 2015 with SPH researchers—but White arrived when the organization was in the process of leaving Vietnam, and transitioning its projects in the country to a newly launched organization: Consulting and Researching on Community Development (CRCD).

White’s work in the transition mainly focused on building up CRCD’s database of health statistics for the country and successful frameworks used in the past.

White got more than the usual hands-on experience with a project. Her work in the mobile learning evaluation—continued by CRCD—went alongside getting into the machinery of international public health work, from an organization’s launch to the time it passes the torch.

“It’s been rewarding to see the end and the beginning at the same time,” she says.



(Top) Miranda Fadden (SPH'16) left, and Shirly Thomas (SPH'16) right, Santander Scholars at Snehagram Campus, Tamil Nadu, India

(Bottom) Tanner Crandall (SPH'15), Santander Scholar in South Africa



Nelson Holmes: Tanzania

THE SANTANDER SCHOLARS PROGRAM made it possible for Nelson Holmes to assist a study on gender-based violence.

His practicum was with Together to End Violence Against Women (TEVAW), a research project in the northern Arusha Region of Tanzania. Led by SPH Associate Professor of Global Health Lisa Messersmith, the study tries to tease out the effectiveness of different methods of challenging harmful norms around gender.

Comparing attitudes before and after the interventions meant managing a heap of data. That was where Holmes—who came to SPH with plenty of experience in large digital scan projects and paper-to-digital-records conversion—could help.

“We were really fortunate and pleased that Nelson was able to get support from Santander,” says Messersmith, adding that his help was invaluable to the Tanzania study—and that the experience for him was just as vital.

“It’s really hard to explain how important it is for students in global health to be able to go and be so much a critical part of a study like this,” she says. “He’s doing all that he needs to do to be a future global health professional. It was an extraordinary opportunity.”

Selam Hailu: South Africa

SELAM HAILU STUDIED PHARMACOLOGY and worked in the pharmaceutical industry in her home country of Ethiopia before coming to SPH. For her practicum, Hailu used and expanded on both her pharmaceutical and public health knowledge as a teaching assistant for two short courses in pharmaceutical public health at University of the Western Cape (UWC) in South Africa.

The experience taught her a great deal, especially thanks to the guest lecturers, students, and other interns who came from public health fields across South Africa and the rest of the continent.

She is grateful to Santander: “This experience would not have happened if it wasn’t for the scholarship.

“The Santander scholarship allowed me to come here, be in a different country, and learn so many different things. I’m very thankful.”

➤ Visit bu.edu/sph/tag/santander/ to learn more about these and other global health practicum experiences supported by the Santander Scholars Program.



DORIS BUFFETT, THE SUNSHINE LADY

FOR DORIS BUFFETT, FOUNDER AND PRESIDENT OF THE SUNSHINE LADY FOUNDATION AND SISTER OF WARREN BUFFETT, IT ALL BEGAN DURING THE GREAT DEPRESSION.

"I was raised in the 1930s, out in the Midwest where it was really desperate," she says. "Some little kids just sailed through that. Not me: I was worried about every kid that came to school and didn't have anything to eat at lunch."

Passing through a park with her family one day, she saw a man standing by the side of the road. His suitcase wrapped in cord and the gauntness of his face made a deep impression on her: "Something snapped and I burst into tears," she says. "It really affected me, and then I had to put it away because I couldn't do a thing about it." She decided then that, when she could, she would help.

In 1996, Buffett founded the Sunshine Lady Foundation, which invests in organizations and programs dedicated to providing opportunities for the advancement of education and well-being for disadvantaged people.

One of those programs is the Boston Senior Oral Health Program (BSOHP), offering free comprehensive dental services to seniors in Boston public housing.

Public insurance covers only limited dental services, leaving many key oral health needs—like dentures—out of reach. At monthly dental screenings at various Boston Housing Authority sites, the program identifies and refers those with treatment needs to Fenway Community Health Center and assists seniors to follow through with care.

BSOHP has screened about 500 seniors and provided services to 425.

A partnership between Boston University, the Sunshine Lady Foundation, the Boston Housing Authority, the Boston Public Health Commission, Fenway Community Health Center, and the DentaQuest Foundation, BSOHP is operated by the Activist Lab, which bridges the gap between academic work and action by engaging partners and community stakeholders, creating workshops and workforce training programs, and developing and implementing programs and policy.

This program is one of several initiatives the Sunshine Lady Foundation has supported. "I've had a lot of teeth filled in in my life, and I know what the prices are," Buffett says. Providing dental care to those who couldn't otherwise afford it makes a profound difference, she says, from improving overall health to getting the confidence to open one's mouth to smile or speak up.

Buffett has received countless letters from the individuals her foundation has helped; among them are plenty of smiling photos from those who have received dental care. Buffett says one woman sent a photo with "a smile this big," and had written that she was now volunteering with an oral health program herself.

"That's the payoff," Buffett says. The Sunshine Lady Foundation especially looks for opportunities where those who are helped are also able to take part. That certainly makes the money go further, she says, and sends an empowering message: "We're not giving something away. We're collaborating."



HONORING A FATHER'S DEDICATION TO SOCIAL JUSTICE

In 2011, Russ Lopez (SPH'03) and his husband, Andrew Sherman, established the Joe G. Lopez Lectureship Fund on Racial Disparities in Health to honor the memory of Lopez's father, Joe Galindo Lopez (1922–2007).

"My father really believed in addressing racial disparities and believed in social justice," Lopez says.

"He would have been uncomfortable to have his name on it," Sherman says of his reserved father-in-law, "but he would be very impressed with what's being done, and really feel that it was the right thing. I think the issues that were important to Lopez' father are the issues that are important to the School."

The elder Lopez was a lifelong supporter of programs and policies to promote equality and opportunity. Having served in World War II, he became a strong advocate for his fellow veterans. He also volunteered in programs including job training, addiction treatment, neighborhood development, community support, and raising money for scholarships.

He passed on his belief in equity to his son, a former assistant professor of environmental health at SPH and now a senior research associate at the Dukakis Center for Urban and Regional Policy at Northeastern University. He is also an author whose recent book examines the relationship between location and

health in his—and SPH's—own backyard, *Boston's South End: The Clash of Ideas in a Historic Neighborhood*.

The couple established the fund to support an annual lecture organized and administered by the Department of Environmental Health at SPH to highlight the social, cultural, and environmental factors that contribute to differing health outcomes among American Indian, Black, Asian, and Hispanic populations in the United States, and to showcase efforts to address health disparities.

This year, Lopez and Sherman will use the lecture fund to sponsor a symposium, "How Where You Live Affects Your Health," on December 1.

"Health is a fundamental human right, and poor health has such a tremendous negative impact on people's lives," Lopez says. "Working with BU to help understand why disparities persist, and also trying to look at ways that people are addressing these kinds of disparities, is one way of making a small contribution."

He says he also wanted to support a school that supported him: "I'm still grateful they took me in! I like to think that I can give something back for all the time and effort they spent on me."

Sherman agrees: "It's a supportive place that was and is working on the right issues."

PUBLIC HEALTH POST

In early 2017, the School of Public Health will be launching Public Health Post (PHP), an ambitious initiative that will break free of prevailing models of public health communication.

Rather than serving as a gathering place for the initiated, PHP will face outward through its anchor news site publichealthpost.org and reach into a wide range of separate fields of action—not only the adjoining health professions but areas such as ecology, energy, and environment; architecture, urbanism, and design; and economics, government, and business. Instead of aggregating public health-related headlines that can be found elsewhere, it will offer a fresh perspective on population health in news of public life in all its variety; rather than prescribing familiar rifle-shot interventions, it will frame an ideas-first dialogue that focuses on the basic social and environmental drivers of population health; rather than preaching to the choir, it will assemble experts from across the professions to learn from one another what they can do to advance population health.

PHP will be a space where leaders from all walks of public life can talk across political and professional boundaries, discover the public health implications of work in which each is engaged, and reach a consensus around public health problems.

➤ Stay tuned for more information on the official launch date of PHP, and visit bu.edu/sph for updates.



STUDENT ALUMNI MENTORING PROGRAM (StAMP)

The School of Public Health launched the Student Alumni Mentoring Program (StAMP) in Fall 2016. More than 300 alumni volunteered to mentor SPH students.

StAMP connects MPH students with SPH alumni to create successful mentoring relationships. StAMP provides students with professional guidance from alumni in the field and benefits alumni by offering a way for them to stay connected with the School.

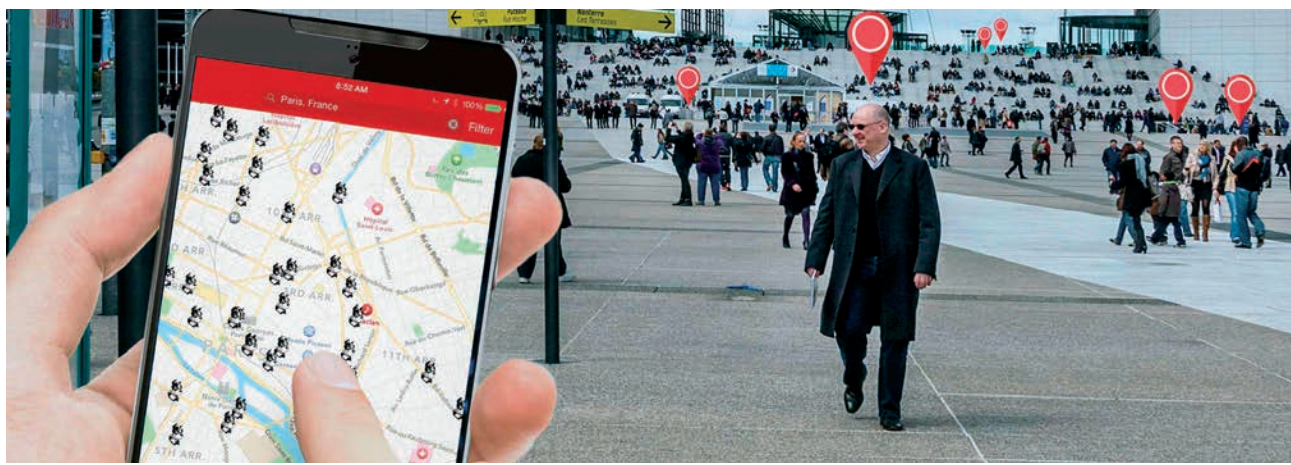
➤ Visit bu.edu/sph/stamp for more information and to register to participate.

THE ALUMNI APP

BU on EverTrue is the fastest and easiest way to network from anywhere in the world, get in touch with classmates, and stay connected to the University. The app combines

your LinkedIn profile and information you've shared with BU into one powerful tool, allowing you to find Terriers in your industry and near your business address.

➤ Visit bu.edu/alumni/careers/alumni-directory-app/ today for more information and to get started.



SPH DEAN'S ADVISORY BOARD

Gary Cohen (SPH'06),
Founder and President,
Humatics Corporation

Charles L. Donahue,
Health Care Consultant,
Health Policy

Susan Garfield (SPH'11),
Principal, Ernst & Young

John P. Howe III, MD (MED'69)

Christine S. Hunter, MD
(MED'80, CAS'80),
Chief Medical Officer, US Office
of Personnel Management

Betsy Lahue (SPH'99),
Vice President,
Strategic Marketing,
Health Economics and Out-
comes Research, BD Ventures

Joel Lamstein,
President, John Snow, Inc.

Cristin Lis (CAS'90),
Senior Vice President,
Corporate Affairs,
Global Blood Therapeutics

Timothy Murphy,
CEO, Beacon Health Strategies

Elizabeth Olek, DO (SPH'02),
Senior Medical Director,
Puma Biotechnology Inc.

Kevin C. Phelan,
Co-Chairman, Director of
Capital Markets, Boston,
Colliers International Inc.

Philip Reilly, MD, JD,
Venture Partner,
Third Rock Ventures

Jeannine M. Rivet (SPH'81),
Executive Vice President,
UnitedHealth Group

Paul L. Rosenberg,
Partner, The Bridgespan Group

James Sherblom

Zubeen Shroff (CAS'86),
Managing Partner,
Galen Management

Sheldon N. Simon,
Partner, Adage Capital
Management, L.P.

Michael J. Taylor,
Senior Vice President,
Aon Hewitt

Donato Tramuto,
President, CEO,
Healthways, Inc.

Diana Wechsler Kerekes
(CAS'87, LAW'90)

SPH ALUMNI LEADERSHIP COUNCIL

Mireille Aramati (SPH'86, MET'87),
Assistant Professor, Tufts University
School of Medicine

Emily Bajcsi (SPH'03),
Partner, Epstein Becker & Green, P.C.

Bahby Banks (SPH'05),
CEO, Pillar Consulting, LLC

Suzi Bouveron (SPH'91),
Health Education Consultant III,
CA Department of Public Health
Immunization Branch

Joshua Boxer (SPH'01),
Assistant General Counsel,
University of Miami

Barbara Buell (SPH'94),
Partner, Smith Duggan Buell & Rufo, LLP

Vivian Cabral (SPH'97),
Program Manager, UCLA-UCI Alpha
Stem Cell Clinic

James Chen (SPH'09),
Manager of Business Analysis,
Dana-Farber Cancer Institute

Kelley Connors (SPH'88),
President, KC Healthcare
Communications, LLC

Dhayana Dallmeier-Rojas (SPH'15),
Director of Research Unit on Aging,
University of Ulm Medical Center

Robyn Eckerling (SPH'06),
Chief Privacy and Security Counsel, Allscripts

Alexandra England (SPH'94),
Nurse Practitioner, Teen Health Center,
Cambridge Rindge and Latin School,
Cambridge Health Alliance

Bryan Eustis (SPH'04),
Executive Director, Liberia,
Partners in Health

Adam Falcone (LAW'99, SPH'01),
Partner, Feldesman Tucker
Leifer Fidell, LLP

Mary-Lynn Fulton (SPH'99),
Head, Clinical Operations Study
Management, Vertex Pharmaceuticals

Kara Guerriero (SPH'05),
Vice President, Membership and
Corporate Development, National Council
for Behavioral Health

Christie Hager (SPH'91),
Senior Vice President, Beacon
Health Options

Jill Harkin (SPH'00),
Senior Case Management Specialist, U.S.
Rare Diseases, Sanofi-Genzyme

Pawandeep Kaur (SPH'15),
Clinical Trial Director, Boston University
School of Public Health, Department of
Global Health

Jared Kutzin (SPH'07),
Director of Education, New York
Presbyterian/Hudson Valley Hospitals

Russ Lopez (SPH'03),
Senior Research Associate,
Northeastern University

Sean Lunde (Questrom'10, SPH'10),
Principal Consultant, Digital Health,
Wipro Technologies

Rita Merino (SPH'97),
Global Project Head, Sanofi-Aventis

Heather Pierce (SPH'02),
Senior Director, Science Policy &
Regulatory Counsel, Association of
American Medical Colleges

Jane Pleskunas (SPH'15),
Research Study Coordinator,
Boston Medical Center

Mark Roseman (SPH'88, '97),
Executive Vice President, Global Scientific
Operations, ICON Clinical Research

Julie Ross (SPH'00),
Branch Chief, Data Operations, U.S.
Consumer Product Safety Commission

Amaru Sanchez (SPH'09),
Law Clerk, Morgan Lewis & Bockius, LLP

Elizabeth Sommers (SPH'89, '10),
HIV—Acupuncture Team Leader,
Boston Medical Center

Sonja Tong (SPH'05),
Director, Regulatory Affairs,
Gilead Sciences

Rodney VanDerwarker (SPH'08),
Vice President, Primary Care,
Behavioral Health and Institute Operations,
Fenway Health

Lawrence Vernaglia (LAW'94, SPH'94),
Partner, Foley & Lardner, LLP

Steven Ward (SPH'95),
Founder, Public Health Solutions, LLC



DEAR FRIENDS:

THANK YOU FOR SUPPORTING BOSTON UNIVERSITY AND THE SCHOOL OF PUBLIC HEALTH. This 40th anniversary celebration year has been marked by tremendous outreach and interconnection within our community of board members, donors, alumni, faculty, staff, and friends to strengthen the School's mission.

Our yearlong celebration included a kick-off reception in February attended by more than 300 guests in Boston; signature alumni receptions across the country in New York City, Washington, DC, San Francisco, Chicago, and Florida; and four major symposia on current public health challenges. Dean Galea's commitment to personally meet many of you during this special year included his 40 for 40 global tour of dinners and receptions at both international and domestic locations for discussion with alumni, friends, and influencers on compelling contemporary public health issues of our time. Lastly, the capstone event was a magnificent gala that engaged supporters who are committed to helping SPH make a difference.

Accordingly, progress on the campaign continues to be strong. To date, we have raised \$47.2 million, which is 79 percent of the way toward reaching the School's increased \$60 million campaign goal. Donor revenue for annual giving to SPH increased by almost 20 percent from last year. With the completion of the School's strategic planning exercise, Dean Galea has articulated 10 ways to support the School that we hope will provide guidance for our benefactors to direct their philanthropic giving for the maximum impact at SPH to advance the public's health.

I am very grateful to all of those individuals, foundations, and corporations that commit philanthropic support to SPH. Your contributions enable our students and faculty to Think, Teach, and Do in order to create the conditions that keep people healthy.

Sincerely,

Joel Lamstein
Chair
Dean's Advisory Board, Boston University School of Public Health
Co-Founder and President, John Snow, Inc.

THANK YOU, DONORS!

Boston University School of Public Health extends a very special thank-you to those alumni, parents, and friends who made gifts between July 1, 2015, and June 30, 2016.

\$100,000-\$249,999

Merwyn Bagan (MED’62, SPH’95) and Carol J. Bagan ■■
Hsi Pin Chen (CAS’89, SPH’91, MED’96) and Sam S. Wu (CAS’87, GRS’90, MED’92, SPH’92) ■■

\$50,000-\$99,999

Ruth A. Moorman (CAS’88, SED’89, ’09) and Sheldon N. Simon ■■

\$25,000-\$49,999

Joel H. Lamstein and Sarah Lamstein ■
Robert F. Meenan (MED’72, Questrom’89) and Yana Kotlar (SSW’14) ■■■■
Sam S. Wu (CAS’87, GRS’90, MED’92, SPH’92) and Patricia C. Tsang (CAS’92, GRS’92, MED’92) ■

\$10,000-\$24,999

Anonymous
George H. Anbinder (Questrom’59) and Eleanor F. Anbinder (SED’62) ■
Frederick H. Chicos ■■
Carolyn M. Colton (SED’71) and Theodore Colton ■■■■
Maurice R. Ferre (CGS’81, MED’92, SPH’92) and Maria D. Ferre ■■
John P. Howe (MED’69) and Tyrrell E. Flawn ■■
Heather M. Miselis (MED’00, ’04, SPH’00) and Nathan R. Miselis (GRS’95) ■■
Mina Paul (SPH’97) and Ajay Saini (Questrom’82) ■■
Jane A. Pleskunas (SPH’15) ■■
Abby A. Rockefeller and L. S. Halprin ■
Donato J. Tramuto ■■
Richard P. Trevino (SPH’06) ■■

\$5,000-\$9,999

Laurel Beverley (MED’97, SPH’97) ■■
Lisa B. Caruso (SPH’99) ■■■
Gary A. Cohen (SPH’06) ■
L. Adrienne Cupples (GRS’74) and John Cupples ■■■
Charles L. Donahue and Nancy T. Donahue ■■■■
Elaine B. Kirshenbaum (CAS’71, SED’72, SPH’79) and Howard D. Kirshenbaum ■■■
Matthew H. Liang ■■

Russell P. Lopez (SPH’03) and Andrew D. Sherman ■
Elizabeth A. Olek (SPH’02) ■
Jeffrey H. Samet (SPH’92) and Michele S. Marram ■■

\$2,500-\$4,999

Anonymous
Sandro Galea and Margaret E. Kruk ■■■
Betsy J. Lahue (SPH’99) ■
Anne R. Meyers (Questrom’80, ’81) ■
Philip R. Reilly and Nancy L. Reilly ■■
James P. Sherblom and Loretta H. Sherblom ■
Michael J. Taylor ■■
Martha M. Werler (SPH’89) and David Fonseca ■■■

\$1,000-\$2,499

Anonymous (2)
George R. Alcott
Daniel P. Alford (SPH’86, MED’92) and Barbara J. St. Onge ■■■
Zheng J. Chen (SPH’09) and Angela Shen ■
Lawrence A. Cross (SPH’93) ■■
Jill Downing (SON’74, SPH’07) and Wilson S. Colucci (MED’75) ■
Mary Jane England (MED’64) ■■■■
Bryan M. Eustis (SPH’04) ■
Adam J. Falcone (LAW’99, SPH’01) ■
Andrew and Martin Farach-Colton ■
Mary-Lynn Fulton (SPH’99) ■■
Deborah E. Glotzer (SPH’90) and David A. Waltz ■■
Kara S. Guerriero (SPH’05) and Chuck Guerriero ■■
Jane A. Hale ■■
Jill Harkin (SPH’00) and Ferghal Harkin ■
Charles R. Horsburgh and Brita E. Lundberg ■■■
Christine S. Hunter (CAS’80, MED’80) ■■
Leslie L. Kolterman and John Kolterman ■■■
Sayaka Koseki (CAS’07, Questrom’11, SPH’11) and Andre L. Botelho (ENG’03, ’08, ’12) ■■
Suzette M. Levenson (SED’76, SPH’84) and Robert M. Levenson ■■
Michael D. McClean ■■

Jay D. Orlander (SPH’92) and Anna J. Mitus (CAS’83, MED’83) ■■■
Kevin C. Phelan and Anne D. Phelan ■
Heather H. Pierce (SPH’02) and Mark Schofield ■■
Caitlin T. Ravichandran (CAS’98) and Hari Ravichandran ■■
Adam J. Rose (SPH’07) and Joanne D. Rose ■■■
Mark J. Roseman (SPH’88,’97) ■■
Lora L. Sabin and Jonathan Hecht ■■■
George R. Seage (SPH’83, ’91) and Ann A. Aschengrau ■■■
Laura F. Semlies (SPH’99) and Christopher J. Semlies ■■
Oluwatoyin Shonukan (SPH’16) ■
Zubeen Shroff (CAS’86) and Anahaita N. Kotval ■
Roseanna Spizziri (SPH’80, Questrom’91) ■■
Sonja L. Tong (SPH’05) ■■
Rodney A. VanDerwarker (SPH’08) and Todd Paul ■
Lawrence W. Vernaglia (LAW’94, SPH’94)
Bruce W. Weinstock (CAS’83, MED’86, SPH’97) and Lisa Kempler (MET’93) ■■
Lauren A. Wise ■■■
Julie C. Wisniewski (SPH’00) ■
Ilga B. Wohlrab (SPH’99) and Hartmut Wohlrab ■■

\$500-\$999

Anonymous
Thomas A. Amoroso (MED’90, SPH’09) and family ■■
Kathryn A. Atchison (SPH’82) and C. Bryce Benjamin
Amy R. Aulwes (SPH’94) and Warren K. Zola ■
Emily E. Bajcsi (SPH’03) and Michaela Kayla Tabela ■
Leonard Bernstein (SDM’60, SPH’95)
Leslie I. Boden and Judith A. Yanof ■■
Lynne Brodsky (MED’83, SPH’88) and Rob Levine
Robert A. and Beverly A. Brown ■■■
Vivian F. Cabral (SPH’97)
Lauren A. Celano (Questrom’10) ■

We have worked diligently to include and list correctly the names of all donors to Boston University School of Public Health and all SPH alumni who gave to BU during the fiscal year from July 1, 2015, to June 30, 2016. Please let us know of any corrections by contacting Arielle Fischer, donor relations coordinator, at 617-638-4658 or asf22890@bu.edu.

Stella K. Chan-Flynn (SPH’94) and Michael J. Flynn ■
Kelley A. Connors (SPH’88) and Julien M. Jarreau
Michael J. Corwin and Melanie Kim ■
Elizabeth Costa (SPH’09)
Linda B. Cottler (SPH’80) and Matthew R. Cottler ■
Brenda S. Deutsch (SPH’83) and Daniel R. Deutsch (LAW’86) ■■
Kimberly A. Dodd (MED’02, CAS’92, SPH’10) ■
Paul S. Farsai (SDM’94,’95, SPH’97) ■■
Frank G. Feeley ■■
Terry S. Field (SPH’88,’93) ■
Susan A. Flanagan (SPH’83) ■
Nadine L. Fontan (SPH’85, LAW’89) ■
Susan H. Foster ■
Robert A. Furman (SPH’95) and Carole R. Bohn (SED’76,’81) ■■■
Paula J. Gallagher (SPH’86) and Mark J. Gallagher ■
Leonard H. Glantz (CAS’70, LAW’73) ■■
Laura Housman (CAS’88, SPH’94, Questrom’00) and Kenneth Housman (Questrom’85) ■
Mary E. Keough (SPH’80) ■
Mark A. Keroack (SPH’00) and Ann Errichetti ■
Ghassan A. Khoury (SDM’96,’97, SPH’99) and Thenia Kazou (SDM’02, ’97) ■■
Wang-Cheng Ko (SPH’01)
Howard K. Koh (SPH’95) and Claudia A. Arrigg ■
Timothy L. Lash (SPH’92,’99) ■
Katherine E. Mason (MED’02,’06, SPH’02) ■
Joseph M. Massaro (GRS’94) and Monica Massaro ■■
Scott and Muriel Nichols ■■■
Daniel J. Oates (CAS’00, MED’00, SPH’05) ■
Jodi B. Sperber (SPH’00, SSW’00)
Baylah S. Tessier-Sherman (SPH’06) and Bryan T. Hooper ■
Oscar A. Wasserman (Questrom’56, LAW’59,’62) and Elaine Wasserman (SED’72) ■■
Roberta F. White ■■

Steven M. Yood (MED’92) and Marianne U. Yood (SAR’86, SPH’90, ’98) ■■

\$250-\$499

Anonymous
Thomas P. Ahern (SPH’06,’10) and Mariah McNamara ■
Mireille Aramati (SPH’86, MET’87) and Fredric J. Feldt ■
Mary K. Barger (SPH’09) and John Kelleher ■■
Tamar F. Barlam (SPH’09) ■■
Patricia P. Barry (SPH’87) and David M. Barry ■
Neil D. Beneck (SPH’94) and Marie-Helene Saint-Hilaire ■■
Harriet K. Brand (SED’74, SPH’94) ■
Rachel S. Busby (SPH’06) and Christopher M. Busby ■
Bin Cai (SPH’88) ■
Kevin M. Casey (SPH’87) and Linn C. Casey ■
Catherine Ching (SPH’94, SSW’94)
John J. Cloherty (SPH’89) and Elaine Cloherty ■
Christine A. Coakley (SPH’97) ■
William Dejong ■
Diane C. Devlin (SPH’09) and John J. Devlin ■
Josee Dupuis and Eric D. Kolaczynski ■■■
Rani Elwy and Sherin A. Elwy ■
Arthur F. Ensroth (SPH’04) ■
James A. Feldman (SPH’06) and Eileen F. Feldman ■■
Maureen A. Flynn (SPH’07) ■
Lisa Fredman ■■
Karen M. Freund (SPH’89)
David R. Gagnon (SPH’89, GRS’98) and Carla M. Van Bennekom (SPH’86) ■■
Carmen Garcia (SDM’10, SPH’15) and Gary Abramson ■■
Susan M. Graham (SPH’90)
James J. Heffernan (MED’77, SPH’92) and Mary A. Barry (SPH’88) ■
Rosalie J. Hermos (SPH’91) and John A. Hermos (MED’65) ■
Lianne Hope (SPH’14, SSW’14)
Michael S. Isikow (LAW’92) ■■
Herbert L. Kayne and Phyllis D. Kayne ■
Heidi B. Kummer (SPH’04) and Karl H. Breuing
Jared Kutzin (SPH’07) ■
Jean-Robert Larrieux (SPH’92) ■
Alice Levine
Jamie W. Marshall (SSW’05, SPH’06) ■
Maureen R. McClelland (SPH’86)
Jana L. Meyer (SPH’04) ■
Kathleen M. Mortimer (SPH’92) and Jeffery Mortimer ■
Peter H. Moyer (SPH’03) and Grisel G. Moyer ■
Michael E. O’Brien (Questrom’01) and Rachel E. Cohen (CAS’01) ■■■
Karen I. Pahl (SPH’92) and Joseph M. Polito ■
Kara J. Peterson (Questrom’08) and Richard DiBona ■■■
Paula A. Quatromoni (SPH’01) and Steven C. Borkan ■■
Steven J. Ralston (SPH’11)

Patricia A. Roche ■
Michael S. Rosenblatt (SPH’89, Questrom’97) and Patricia L. Roberts (CAS’81, MED’81) ■■
David L. Rosenbloom and Alice E. Richmond ■■
Ivan D. Ross (Questrom’13, SPH’13) ■
Cathleen Rowland (SPH’99) and Patrick J. Rowland (MET’93, ’01) ■■■
Kimberly A. Shaffer (SPH’04) ■■
Elizabeth A. Sommers (SPH’89, ’10) ■■
Rose S. Strain (SPH’78, Questrom’81)
Beth R. Suereth (CAS’85)
Lisa M. Sullivan (GRS’86, ’92) ■
Donald M. Thea ■■
Jennifer L. Turgiss (SPH’13) and Bruce E. Turgiss ■■
Amarachi A. Umez-Eronini (CAS’09, SPH’11) ■
Owen Wallace and Erin Wallace
Michael E. Widlansky (SPH’04) and Shannon Panszi
James A. Wolff and Carol A. Gross Wolff ■■
Leslie M. Wright (SPH’00) and Stephen C. Wright (MED’00) ■

\$1-\$249

Anonymous (11)
Mona H. Abdo (SPH’15) ■
Siyad A. Abdullahi (SPH’00)
Hitomi Abe (SPH’16)
Edith T. Ablavsky (MET’14) and Leonid Ablavsky ■
Shayna Adams ■
Bilaal Ahmed (SPH’11) ■
Kathryn K. Ahnger-Pier (SPH’12) ■
Katherine Ahrens (SPH’12) ■
Nelson E. Airewele (SPH’11) ■
Sisay T. Akalu (SPH’95) ■
Lola-Ade B. Akintobi (SPH’16)
Scott Aland (Questrom’16, SPH’16) ■
Rebecca R. Albanese
Edward J. Albrecht (SPH’82)
Jennifer P. Alexander (COM’91, SSW’96, SPH’97)
Foad F. Aliev (SPH’04) ■
Leslie E. Allen (SPH’13)
Shelley J. Allison (SPH’84) and Mark S. Flieger ■
Raghavan Amarasingham (SPH’93) ■
Kelley Ambrose (SPH’16)
Duwa M. Amin
Shreyasee Amin (SPH’99) ■
Beverly Anderson (SPH’95) and Bruce Anderson ■
Kellie L. Anderson (SPH’02) and Mark W. Anderson ■
Victoria C. Anderson
Virginia Andradas (SPH’91) and Emery N. Brown ■
David C. Anthony (SPH’03)
Joseph S. Anzalone (SPH’92) ■■
Paul A. Arandia (SSW’05, SPH’07) ■
Jose G. Arciniegas (SPH’05, SDM’10) ■
Arquimedes J. Areche (SPH’03) ■
Brett A. Armstrong (SPH’16)
Matthew B. Au (CAS’12) ■■
Taliser R. Avery (SPH’11) ■
Miles E. Avila (CAS’15) ■
Valerie W. Aw (CAS’14, SPH’16)
Sara S. Bachman and John Bachman ■

CORPORATIONS, FOUNDATIONS, AND ORGANIZATIONS

\$1M-\$4.9M

Bill & Melinda Gates Foundation

\$250,000-\$499,999

CDC Foundation
World Health Organization

\$100,000-\$249,999

Azucareros del Istmo Centroamericano
Bayer Pharma Ag
Boston Medical Center
Bristol-Myers Squibb Foundation
Burroughs Wellcome Fund
Comite Nacional de Productores de Azucar
Concussion Legacy Foundation
JBB Foundation
Santander Bank, N.A.
Thrasher Research Fund

\$50,000-\$99,999

Anonymous
American Association for Advancement of Science
American College of Radiology
Avon Foundation for Women
Blue Cross Blue Shield of Massachusetts
The Charles Stark Draper Laboratory Inc.
Gilead Sciences
Health Law Advocates, Inc.
John D. and Catherine T. MacArthur Foundation
Novartis Pharma AG
Prostate Cancer Foundation
Sandoz International GmgH
Vasculitis Foundation

\$25,000-\$49,999

AIDS Healthcare Foundation
Barnes & Noble College Booksellers, LLC
Conrad N. Hilton Foundation
International Pharmaceutical Federation
John Snow, Inc.

The New Hampshire Charitable Foundation
North American Insulation Manufacturers Association
The One Love Foundation
Pyxera Global
The Robert Wood Johnson Foundation
Worcester Housing Authority
World Education, Inc.

\$10,000-\$24,999

Allade Inc.—The Emil Family Charitable Fund
Alpha-1 Foundation
Aramark Corporation
Art beCAUSE Foundation
Concussion Legacy Foundation
David and Lucile Packard Foundation
Tramuto Foundation
Foundation for Physical Therapy
GHR Foundation
Northeast States for Coordinated Air Use Management
Prometrika, LLC

\$5,000-\$9,999

BNY Mellon Charitable Foundation
ConAgra Foods Foundation
Hunger Free Minnesota
The Pepsi Bottling Group LLC
Women’s Refugee Commission, Inc.

\$2,500-\$4,999

The Boston Foundation
Fenway Health
Healthways, Inc.

\$1-\$2,499

The Ayco Charitable Foundation
Beryl W. Spencer Living Trust
Episource, LLC
Hesed Foundation Inc.
Massachusetts Medical Society
Schwab Charitable Fund
Westchester Community Foundation

Bertina M. Backus (SPH’03) ■
Kathryn L. Bacon (SPH’09,’16) ■
Nour Al-Hoda T. Baghdady (SPH’16)
Susan B. Baird (SPH’79) ■
Jillian S. Baker (SPH’16)
Akanksha Bali (SPH’14, SDM’16)
Alan L. Balsam (SPH’82) ■■
Bahby T. Banks (SPH’05)
Cassandra Bannos (Questrom’16, SPH’16) ■
Amy S. Baranoski (SPH’10) ■
Yiyao L. Barnoon (SPH’15) and Barak Barnoon ■
Cynthia A. Barrett (SPH’85) and Robert F. Barrett (SED’52) ■
Jennifer J. Beard (SPH’06) ■
Sassan Behjat (SPH’94) and Roya Behjat

Heidi M. Behr (SSW’00, SPH’01) and Mark Egeland
Candice M. Belanoff ■■
Emily I. Belanus
Katherine A. Belusa (SPH’16)
Corey M. Benedum (SPH’14)
Courtnee A. Benford (SPH’14)
Sandra L. Berkley (SPH’93) and Charles E. Berkley ■
Dan R. Berlowitz (SPH’87) and Betty L. Green (COM’89) ■■■
Berthlyn M. Bernier (SSW’97, SPH’99) ■
Dana L. Bernson (CAS’07, SPH’10)
Toby N. Bernstein (SPH’86) ■
Judith S. Bessoff (SPH’82) ■
Jenna A. Bhaloo (SAR’16, SPH’16)
Dea L. Biancarelli (CAS’16, SAR’16, SPH’16)

ENDOWED PROFESSORSHIP

Edward R. Utley Professorship in Legal Medicine

ENDOWED SCHOLARSHIPS

Community Scholars Endowed Scholarship Fund
John P. Howe Endowed Scholarship Fund
Jenny Huddart Scholarship Fund
Lamstein/JSI Scholarship Fund
Outstanding Scholars Fund
Robert F. Meenan Endowed Scholarship Fund
Tramuto Foundation International Scholarship Fund
William Randolph Hearst Endowed Scholarship Fund

ENDOWED LECTURESHIPS

William J. Bicknell Lectureship Fund
Cathy Shine Lectureship Fund

ENDOWED SPECIAL PURPOSE FUNDS

David Ozonoff Unsung Hero Award Fund
George J. Annas, JD Endowment Fund
Katherine M. Skinner Memorial Prize Fund for Commitment to the Study of Women's Health Issues

STUDENT ACADEMIC AWARD FUNDS

Allan R. Meyers Memorial Prize Fund for Excellence in Health Services
Dr. William B. Patterson Memorial Prize Fund for Excellence in Environmental and Occupational Health
Herb Kayne Prize Fund for Excellence in Biostatistics
The John Snow, Inc. Award Fund in International Health

Leonard H. Glantz Award Fund for Academic Excellence
Public Health Practice Fund: Award for Student Excellence in Public Health Practice
The Theodore Colton Prize Fund for Excellence in Epidemiology

FACULTY TEACHING AWARD FUNDS

Norman A. Scotch, PhD
Excellence in Teaching Award Fund

SPECIAL PURPOSE FUNDS

Boston University School of Public Health Scholarship Fund
Charles L. Donahue Frontiers in Public Health Speaker Series
Colton-Cupples Visiting Scholars Fund
Community Scholars Fund
Environmental Health Gift Fund
Field Practicum Fund in Global Health
Global Health Department Gift Fund
Joe G. Lopez Lectureship Fund on Rapid Disparities in Health
Multiple Myeloma Research Fund
Public Health Innovation Incubator Fund
Robert F. Meenan Faculty Support Fund
The Theodore Colton Fellowship Fund in Epidemiology

IN KIND GIFTS

John Snow, Inc.
Foley & Lardner LLP

MATCHING GIFTS

General Reinsurance Corporation
Merck & Co., Inc.
Pfizer, Inc.
UnitedHealth Group
W.K. Kellogg Foundation

Meagan A. Carpenter (CAS'04, SPH'08)
Ruth A. Carretta (SPH'88) ■
Nancy A. Carroll (SPH'84) ■
Christine C. Caruso (SPH'05) ■
Beth Carvette (SPH'94) and Peter Scarpaci ■
Elona M. Casady (SPH'03) and Jason K. Casady
Robert J. Cavaliero and Pamela C. Schmidt-Cavaliero (CAS'73) ■
Christopher Y. Chan (SPH'02)
Elaine Chan (SPH'13)
Chris Chanyasulkit (CAS'98, SPH'01) and James Bardin
Chava E. Chapman (SPH'89) and Basil Chapman ■ ■ ■
Martin P. Charns and Judy Levin-Charns (SAR'75, SED'86) ■ ■ ■
Heidi E. Chase (SPH'08) ■
Marci B. Chasnow (CAS'83, MED'83)
Chen Chen (Questrom'16)
Mengfan Cheng (SPH'14) ■
Teresa Cheng (CAS'16, SPH'16)
Teresa M. Cheng (SPH'10) and Ira C. Chan ■
Ellen Childs ■
Edward C. Chu (SPH'01)
Daniel R. Church (SPH'97)
Elissa M. Ciment (SPH'00) and Ari J. Ciment ■
Mary H. Clark (SPH'88)
James Clemson
Aaron J. Cohen (SPH'85, '91) and Ann Cohen ■
Alexander M. Cohen (SSW'10, SPH'11)
Adena R. Cohen-Bearak (SPH'99) and Arnold H. Bearak (ENG'80) ■
Deborah S. Collins (Questrom'86) and Stephen B. Collins ■
Sean P. Connolly
Patricia T. Cook (SPH'81) and Evan P. Cook (MET'86) ■ ■
P. O'Dea Culhane Coughlin (SON'73, SPH'79) ■ ■
Thomas J. Covey (SPH'15) ■
Madison R. Crafft (CGS'14, SAR'16) ■
Lisa A. Cremer (SSW'08, SPH'09) ■
Richard J. Cresta (SSW'93, SPH'94) ■ ■
Kristine M. Crockett (SPH'09) ■ ■
Kaitlyn L. Dally (SAR'16, SPH'16)
Neda Daneshvar (Questrom'16, SPH'16) ■
Dan Dao (SPH'09) ■
Iris W. Davis (SPH'84) ■
Lora M. De Felice (MET'96) ■
Justine H. de Marrais ■ ■ ■
Eugene R. DeClercq ■ ■
Kevin Delaney (Questrom'10, SPH'10)
Patricia M. Demers (SON'77, SPH'88) ■
Judith D. Depue (SED'72,'77, SPH'93) and Thomas J. Lamonte ■
Smruti M. Desai (SAR'09, SPH'11)
Ralph A. Detri (SSW'86, SPH'89) ■
J. Michael Devlin (SPH'87) and Maureen A. Devlin ■
Yaminette Diaz-Linhart (SSW'10, SPH'11) ■ ■
Kelly T. Differding (SPH'16)
Daniel L. Do (SPH'14, SSW'14)
Laura E. Dodge (SPH'09) ■

Sarah V. Doersam (SAR'12, SPH'12)
Carol A. Dolan ■
Natalie B. Doran (CAS'06)
Cassandra R. Driscoll (SPH'12) ■
Ayres T. Dsouza (SPH'92) and Marjorie J. Dsouza
Megan M. Dumitru (SPH'15) ■
Joline E. Durant (MET'04) and Melvin Durant ■ ■ ■
William J. Dwyer (CAS'68) and Sarah P. Z. Dwyer ■ ■
Samantha C. Eakes (CAS'16, SPH'16) ■
Daniel J. Eccher (SPH'99) and Brigid A. Mullally ■
Robyn L. Eckerling (SPH'06) ■
Erika M. Edwards (SPH'05, '11) and Brian D. Edwards ■ ■
Jessica L. Ehinger ■
Lisa A. Ehle (CGS'98, SAR'00, SPH'07) and Jason Ehle
Laura J. Eliseo (CAS'88, SPH'96, MED'01)
Susan Emerman (SON'64) and Richard A. Emerman ■
Allyson D. English (CGS'14, SAR'16, SPH'16)
Barbara E. Epstein (SPH'96) and Michael J. Epstein ■
Gloria Esoimeme (SPH'13)
Midori L. Evans (SPH'96)
Jean M. Ewan (SPH'89)
Ashley Faber (SPH'15) ■
Ellen F. Faden (SPH'82) and Arthur A. Faden ■ ■
Karen S. Farbman (MED'93, SPH'03) and David A. Farbman
Asha E. Farmer (SPH'16)
Caitlin M. Farrell (SPH'13)
Sarah E. Faso (SPH'15) ■
Elizabeth M. Faye (SPH'14) ■
Ahad A. Fazelat (MED'01, '05, SPH'01) and Joyia E. Fazelat (MED'05) ■
Carrie G. Feliz (SPH'03) and Ruben Feliz ■
Rosemarie A. Ferri (SPH'89) and Mark R. Ferri ■
Carey E. Finchem (SPH'16)
Nicole M. Finn (CAS'14) ■
Arielle Fischer ■ ■
Susan S. Fish (SPH'92) ■
Thomas J. Fitzgerald (SPH'13) ■
Oren K. Fix (SPH'05) ■
Russell D. Fleischer (SPH'90) and Mechelle R. Fleischer
Talia M. Flores (SAR'16, SPH'16) ■
Colleen T. Fogarty (SPH'04) and Jeffrey Sciortino ■
Leah S. Forman (SPH'14) ■ ■
Glenn G. Fort (SPH'95)
Susan D. Foster ■
Amanda Frank (SSW'08, SPH'10) ■
H. Susan Freireich (SPH'91) ■
Lindsey E. Frenkel-Rorden (SPH'15) ■
Lise E. Fried (SPH'03) and Rose Dobosz ■
Georgina R. Friedenberg (SPH'82) and Peter I. Friedenberg ■
Alyssa A. Fuller (SPH'14)
Timothy J. Gagne (SPH'03) and Lila H. Solomon ■
Daniel V. Galanto (SPH'15) ■

Lisa M. Galbraith (SPH'96) and Brian J. Galbraith ■
Kerrin M. Gallagher (SAR'16, SPH'16)
Ashley S. Galloway (SPH'13)
Rik Ganguly (SPH'15)
Adam E. Garcia (SPH'16)
Rafael Garcia
Enid J. Garcia-Rivera (SPH'92) ■
Arvin Garg (MED'99, SPH'99) and Priya S. Garg ■ ■
Bruno V. Garisto (MET'13)
Kylia E. Garver (SPH'15)
Lynn A. Garvin ■
Jennifer C. Gates (COM'07)
Christina M. Gebel (SPH'14) ■ ■
Alan C. Geller (SPH'90) and Vivian M. Bendix (CAS'73) ■
Zachary P. Gersten (CAS'11, SPH'15)
David M. Gillerman ■
Katherine Ginnis (SSW'98, SPH'08)
Sophie Godley (SPH'15) ■ ■
Anna M. Goldenheim (MED'15, SPH'15) ■
Barbara F. Goldoftas (SPH'10) ■
Kimberly A. Gomes (Questrom'16, SPH'16) ■
Miguel A. Gonzalez (SPH'95) ■
Sandra H. Goodenough (SPH'81) ■

Mark D. Goodwin (SPH'87, SSW'87) ■
Elise A. Gorseth (SPH'13)
Stephanie A. Gottsch (CAS'10, SPH'12) ■
Sarah M. Gould (SAR'16, SPH'16)
Heather E. Graham (SPH'97)
Barbara W. Graves (SPH'84)
Emily M. Gray (CAS'16)
Dale R. Greer (SPH'99)
Lisa M. Grossi (SON'83) ■
Martha M. Groton (SPH'89) ■
Jessica L. Gruber (SPH'03)
Allison S. Guarino (CAS'16, SPH'16)
Matthew Guldin (CAS'99, SPH'05) ■ ■
Suzanne E. Gunston (SPH'96)
Jessica M. Hagewood (SPH'12, SSW'13)
Sandra Haiman (SPH'02) ■
Vivian Haime (Questrom'16, SPH'16) ■
Nanyamka B. Hales (SPH'04)
William J. Halpin (SSW'03, SPH'06) ■
Davidson H. Hamer ■ ■
Cristina S. Hammond (SPH'99) and William S. Hammond
Elizabeth A. Hankinson (SPH'13)

Carolyn J. Hardin (SPH'89) and Daniel E. Hardin
Bernard L. Harlow ■ ■
Kathryn W. Harris (SPH'92) ■
Roxana Hashemian (SDM'12, SPH'16) and Mohammad H. Dashti (SDM'88, '91) ■ ■ ■
Alan S. Hatton (SED'12) ■ ■
Jennifer N. Hawkins (SPH'16)
Suzanne M. Healy (SPH'01) and Robert J. Healy ■
Amal Hechehouche (CAS'16, SPH'16)
Timothy C. Heeren (GRS'84) ■ ■
Margaret Z. Heimann (SPH'09) ■
Arianne M. Henry (SPH'16)
Elizabeth G. Henry (SPH'15) ■
Michelle Henshaw (SPH'96, SDM'07) ■ ■
Ashley L. Henske (SPH'13) and Brian J. Henske
Catherine L. Hersey (SPH'11) and Seth M. Hersey ■
Kelly N. Heuer (SPH'16)
Sarah Higginbotham (SPH'03)
Elizabeth C. Hinchey (Questrom'17, SPH'17)
Suzanne Hitchcock-Bryan (SPH'92) and Richard L. Bryan ■
Lee Ann Hoff (UNI'84) ■

Nancy A. Hoines (SPH'88) ■
Judith M. Holden (SPH'83) ■
Kathleen D. Hollender (SPH'16)
Matthew T. Hollister (SPH'14)
Erika F. Holmberg (SPH'04)
Jennifer L. Honig (Questrom'02)
Lauren S. Hopper (Questrom'16, SPH'16) ■
Casie E. Horgan (SPH'15) ■
Kathryn A. Horrigan (SPH'02) ■
Cleora B. Horton (SON'55,'59) ■
Tania Hossain (SPH'03) ■
Ann H. Hsiao (COM'92, SPH'97) and Nai-Chang Hsiao ■
Fei Huang (SPH'16)
Ron Hunt and Lindsey Hunt ■
Peter M. Hynes (SPH'15) ■
Lynn N. Ibekwe (SPH'13) ■
Osadebamwen Ighile (SPH'14) ■
Rhiannon M. Iorio (CAS'16, SPH'16)
Alex M. Ireland (SPH'14)
Susan S. Irving (SPH'96)
Carole Geller Jabbawy (SED'89)
Richard A. Jackson (SSW'97, SPH'98) and Alexandra Jackson
Andrea D. Janota (SPH'16)
Emily M. Jansen (SPH'13) ■
Mary C. Japowicz (SPH'97)
Michele M. Jara (SPH'91,'03) ■

Stephanie J. Bigby (SPH'11)
Alice B. Bisbee (SPH'86) ■ ■
Liz Blackwell-Moore (SPH'05)
Nancy L. Bloom (SPH'87) and Jacob L. Bloom ■ ■
Douglas J. Bly and Rena Bly ■ ■
Susan A. Bollinger (SPH'09)
Rachael E. Bonawitz (SPH'16) ■
Carolyn M. Borsch (SPH'12)
Ann M. Borzecki (SPH'97) ■
Katie E. Boss (SPH'11)
Susan F. Bowler (SPH'94)
Joshua A. Boxer (SPH'01) and Jessica Boxer
Meghan M. Bratton (SAR'13, SPH'13) ■
David A. Britto (SPH'85) and Deborah Britto ■
Miriam S. Brody (SPH'16) ■

Mohamad I. Brooks (SPH'07, '16) and Erin T. Brooks (SPH'09, MED'13)
Chelsea Brown (SPH'16)
Kecia L. Brown (SPH'91) ■
John Bry (SPH'08, Questrom'12) and Rennie F. Elliott (SPH'10) ■
Barbara H. Buell (SPH'94) and Paul Langner ■
Joseph S. Bunch and Jessica Leibler ■ ■
Alan Burch
Elizabeth A. Burden (SSW'91, SPH'92) ■
Mary Burke (SPH'00) ■
Elizabeth N. Bwogi (SPH'05) ■
Kristen A. Calcagni (CAS'04, SPH'08) ■
Rebecca E. Cantor (SPH'12, SSW'12)
Chenzhe Cao (CAS'14, SPH'16) ■

20 | BOSTON UNIVERSITY SCHOOL OF PUBLIC HEALTH

bu.edu/sph | 21

THOSE WHO HAVE MADE A GIFT TO THE ROBERT F. MEENAN FACULTY SUPPORT FUND:		
Sachin S. Agarwal	Alexandra I. England	Lisa Metropolis-Toby
George R. Alcott	Mary Jane R. England	Allen A. Mitchell
American College of Rheumatology	David T. Felson	Dipesh Navsaria
George J. Annas	Georgina R. Friedenberg	The New England School of English
Arbella Insurance Group	David R. Gagnon	Judy Norsigian
Brian Barefoot	Paul M. Gertman	Giulia D. Norton
Dan R. Berlowitz	Leonard H. Glantz	Elizabeth A. Olek
Nancy L. Bloom	Barbara W. Graves	Julie R. Palmer
Blue Cross Blue Shield of Massachusetts	Nancy N. Grodin	Victoria A. Parker
Leslie I. Boden	Jane A. Hale	Kevin C. Phelan
Beverly A. Brown	Alan S. Hatton	Peter Reich
Samuel Cabot	Robert J. Haynes	Paul L. Rosenberg
Rowland W. Chang	Judith S. Hearst	Kenneth J. Rothman
Martin P. Charns	Charles R. Horsburgh	Michael L. Rothman
Zheng J. Chen	Jonathan Howland	Lora L. Sabin
Frederick H. Chicos	Karen W. Huskey	Alan P. Sager
Aram V. Chobanian	Alan M. Jette	Richard Saitz
Richard W. Clapp	Mary E. Keough	Jeffrey H. Samet
Selma F. Cooperband	Douglas P. Kiel	Tatiane Santos
P. O'Dea Coughlin	Thomas R. Kiley	Madeleine L. Scammell
Harold Cox	Leslie L. Kolterman	Jonathon L. Simon
James E. Cox	Joel H. Lamstein	Martha Skinner
Jane A. Craycroft	Debra R. Lappin	I. A. Sutherland
Theodore M. Cronin	Suzette M. Levenson	Michael J. Taylor
L. A. Cupples	Jonathan I. Levy	Ralph J. Timperi
J. M. Devlin	Sonja L. Tong	William J. Waller
Laura E. Dodge	William J. Liang	Roberta F. White
Charles L. Donahue	Joseph M. Massaro	Benaree P. Wiley
Frances A. Drolette	Edward I. Masterman	William C. Van Faasen
Josee Dupuis	Michael D. McClean	Cristiano A. Zerbini
Margaret A. Duston	William P. McIlhargey	
Richard Elmore	Robert F. Meenan	
	Melissa Mendelson	

Tenille B. Jensen (SPH'16)
Yuxin Jiang (SPH'07) ■
Susan S. Jick (SPH'85, '91) and Daniel M. Groher ■ ■
Cynthia E. Johnson (SPH'09) and John M. Wortham (GRS'88,'97, Questrom'88) ■
Hannah L. Johnson (SPH'00) and Nolan B. Johnson ■
Janis E. Johnson (SPH'08) ■
Jim Johnson and Karen Johnson ■
Marilyn L. Jordan (SPH'82)
Marie-Charles Joseph (SPH'98)
Conrad Kabali (SPH'10) ■
Rose Anna Kaczmarcik (SPH'08)
Danielle Kahn ■
Marcelyn G. Karagosian (SON'58, '63) and John H. Karagosian ■
Robert A. Katz (SPH'83) and Phyllis M. Katz ■
Janice F. Kauffman (SPH'85) ■
Pawandeep Kaur (SPH'15) ■ ■
Danit Kaya (SPH'12)
Christine M. Kearns (SPH'93) ■
Clara E. Kebabian (SPH'04)
Rachel A. Kell (SPH'07) ■
James A. Kemp (SPH'94) ■
Denise T. Kenneally (SPH'99) ■
Erin M. Kennedy (SPH'14) ■

Stacy E. Kern-Scheerer (LAW'03, SPH'04) and Jonathan R. Scheerer
Jessica B. Kerr (SPH'13) ■
Mary Keville (SPH'79) and Stephen J. Keville ■
Douglas P. Kiel (SPH'86) and Kellene T. Kiel ■
Michelle M. Kietly (SAR'12, SPH'13) ■
Christopher Kim (CAS'06, SPH'08) ■ ■
Sindri L. Kinnier (Questrom'15, SPH'15) ■
Bryan T. Kirk (SPH'16)
Maria D. Kirsch (SPH'94) and Michael Skoler ■
Dzidra J. Knecht
Ryan P. Knox (SAR'16)
Dorie Kogut (SPH'15)
Michael H. Kogut and Rhonda L. Kogut ■
Barbara K. Kondilis (SSW'98, SPH'99)
Tamara E. Konig (SSW'06, SPH'08) ■
Elisa A. Koppelman (SPH'13) and Nicholas J. Cracknell ■ ■ ■
Calvin B. Krogh
David S. Kugler (SPH'94, MED'96, '97) and Dorothy Kugler ■
Kirsten M. Kuhn (CAS'15) ■

Beth M. LaLiberte (SPH'94) and David M. LaLiberte
Joseph P. Lamanna (SPH'04) and Deirdre Lamanna
Barbara Lambiaso (SSW'97, SPH'00)
Wayne W. LaMorte (GRS'85, SPH'94) and Clare D. LaMorte (SPH'99) ■ ■ ■
Joan N. Lane (SPH'80) and Colin P. Lane (CFA'77) ■
Daniel A. Lau (SPH'09) ■ ■
Michael P. LaValley and Camlin Tierney ■ ■
Colette L. Lavoie (SPH'81) ■
Vanessa C. Lecky (SPH'16)
Jaime E. Lederer (SSW'08, SPH'10) ■
Pauline H. Lee (SPH'14)
Nicholas Lehman-White
Julie C. Lemay (SPH'11)
Adam Lessard (SPH'13) ■
Zandra Levesque (CAS'10, SPH'12) ■ ■
Jonathan I. Levy ■ ■
Raymond A. Levy (SAR'98,'99, SPH'01) ■ ■
Lin Li (SPH'12) ■ ■
Tomas F. Lichauco (SPH'87) ■
Julie C. Lima (SPH'98) and David Lima ■
Natalie R. Lindop-Braun (SPH'14) and Aaron R. Lindop-Braun
Delphine F. Liston (SPH'05) and Benjamin E. Liston
Kathy M. Lituri (SPH'03) and Steve Bores ■ ■ ■
Bert Liu (MED'11, '16, SPH'16)
Weijia Liu
Christine A. Lloyd-Travaglini (SPH'97) ■ ■
Brita S. Loftus (SPH'14, SSW'14)
Christopher Louis and Erin Louis ■
Christopher Lourenco (CAS'04, SPH'08) ■
Maria V. Loy (SPH'06) and Bertrand M. Loy ■
Sean A. Lunde (Questrom'10, SPH'10)
Christine M. Lundquist (SPH'15) ■
Kathryn Lunetta ■
Karsten Lunze (SPH'13) ■
Heidi E. Lyle (SPH'95) and Francis Jarmolowicz ■
Caroline B. Lyon (MED'98, SPH'98) ■
Casey Z. MacVane (SPH'00) and Heath R. MacVane (SED'02)
Kathleen MacVarish and James MacVarish ■
Charlene Maeda ■ ■
Jared Lane K. Maeda (SPH'02) ■
Mufaddal Mahesri (SPH'14)
David W. Mailhot (SPH'84) and Maureen T. Mailhot ■
Anne E. Malin (SPH'92)
Nicholas J. Mammano (GRS'66) and Jeannette H. Mammano (CAS'62) ■
Michelle Mancuso (SPH'98)
Katherine R. Mandeville (SPH'06) and Richard E. Mandeville ■
Timothy M. Manning (SPH'16) ■ ■
Dorcas L. Mansell (SPH'91) ■

Raed F. Mansour (MET'11) ■
Matthias M. Manuel (SPH'14) ■
Venessa G. Manzano (SPH'04) and Mark A. Habana ■
Sarah S. Marter (SPH'83) ■
Jennifer R. Masdea (SPH'16) ■
Patrick Masseo (GRS'13) ■
Kari L. Mathis (SPH'03)
David J. Matteodo (SPH'85) and Donna M. Matteodo ■
Alexis L. Maule (CAS'06, SPH'08) ■ ■
Cheryl A. Mayeran (SPH'89) ■
Stephanie L. McBride (CAS'09, COM'09, SED'16) ■ ■
Jonathan C. McCall (SPH'06)
Hannah G. McClellan (SPH'00)
Lois McCloskey ■
Scott B. McCombs (CAS'85, SPH'87) and Victoria McCombs ■
Conswelia M. McCourt (CAS'00, SPH'02) ■
Meghan McCutcheon (Questrom'07, SPH'07) ■
Lisa J. McGarry (SPH'95) and Avraham Nagar (Questrom'05)
Allison R. McHenry (MED'15, SPH'15)
Keith W. McIntosh (CGS'01, CAS'04) and Leidy S. McIntosh (SPH'15, SSW'15) ■
Joyce L. McKenney Goulart (SPH'83) ■
Donald A. McLean (SPH'94) ■
Jody E. McLean (ENG'04, SPH'08) ■
Elisabeth M. McSherry (SPH'84) and Howard H. Green
Nina H. McSweeney (SPH'95) and Lawrence C. McSweeney ■
Eden A. Mdluli (SPH'12) and Gcinisizwe Mdluli ■
Cynthia J. Meadow ■
Melissa Mendelson (SPH'06) ■
Gayle Irene I. Mendoza (SPH'08)
Jennifer K. Merlis (SPH'05) ■
Daniel M. Merrigan (SED'83, SPH'85) ■ ■
Douglas E. Mesler (SPH'97) and Linda L. Mesler (LAW'90) ■ ■
Lisa Metropolis-Toby ■
John D. Meyer (SPH'95) ■
Margaret R. Meyer (Questrom'12, SPH'12) ■
Marissa C. Mihos (SPH'15) ■
Deborah A. Milbauer (CAS'90, SSW'94, SPH'95) and Corey W. Dolgon (CAS'84) ■
Melecia C. Miller (SPH'11) ■
Tej N. Mishra (SPH'14)
Christopher D. Mitchell (STH'85, SPH'88) and Cara R. Mitchell
Amira Mithavayani (SPH'13)
Halima M. Mohamed (SPH'04)
Ruth F. Montgomery (SPH'80) ■
Mollie E. Morris (SPH'16)
Erika L. Mortenson
Angela Mota (COM'02, SED'12) and Rob Mota ■
Ann E. Murphy (SPH'96)
Mary C. Murphy-Phillips (MET'03) ■ ■
Jabed Mustafa (SPH'06, MED'16) ■ ■



AN OUTSTANDING SCHOLAR

AARON FLEISHMAN (SPH'17) was accepted to other schools of public health across the country, but chose to attend Boston University School of Public Health because he was drawn to the dual concentration option offered and felt he would get “the most holistic education” by concentrating in both epidemiology and biostatistics. An award from SPH’s Outstanding Scholars Fund—which supports a student in the top 10 percent of the incoming graduate class—has lightened his financial burden as he pursues an MPH.

“With the support of the **Outstanding Scholars Fund**, SPH is helping me attain my goal to not only collaborate with others to expand the understanding of public health issues, but also to disseminate knowledge to clinicians, policy makers, and the public,” says Fleishman.

“Recently, I was hired as a data analyst at Beth Israel Deaconess Medical Center, where I’ve been able to synthesize biostatistical and epidemiological concepts I learned at SPH.”
After graduation, Fleishman hopes to continue pursuing his goals by doing health services research in the Boston area.

➤ Visit bu.edu/sph/give to support the Outstanding Scholars Fund.

Albert H. Nadjarian (SAR'09, MED'13, SPH'13)
Naomi L. Negash (SPH'16)
Nilda G. Negron (SPH'96)
Asha E. Neptune (MED'11, SPH'11) ■
Patrick Ng (ENG'88)
Uyen-Sa D. Nguyen (SPH'92, '07) ■ ■
Doreen A. Nicastro (SPH'89) and Jesse Reznikow (CAS'81) ■ ■
Sara L. Nichols (SPH'02) and Edward P. Nichols ■
Kerri E. Nickerson (CAS'05, SSW'07, SPH'09) ■
Jingbo Niu (SPH'06) ■ ■
Evelyn Tagbo Nnanna
Christopher A. Noble (SPH'16)
Monica V. Nulkar (SPH'91) and Vinay Nulkar ■
Linda N. Oates (SPH'83) and Daniel E. Oates ■ ■
Mary L. O'Brien (SPH'84) ■
Gerald T. O'Connor (SPH'87) and Mary Ann Stork O'Connor ■
Stephanie Oddleifson (SPH'88) and Robert J. Dunlavey ■
Maryellen M. O'Donnell (SPH'78) and James J. O'Donnell ■ ■
Adeolu O. Oladunjoye (SPH'15) ■
Sarah B. Ollis (SPH'16)
Kathryn G. O'Neill (CAS'16, SAR'16)
Ikushi Onozaki (SPH'97) ■
Monica A. Onyango (SPH'99) ■
Adrianne Ortega (SPH'06, LAW'09) and Abraham R. George ■
Alison J. Osattin (SPH'98) ■
Rhiannon M. Osgood (SPH'05)
Anthony W. Osinski (SPH'13) ■
Susan E. Paadre (SPH'87)
Kristi A. Paiva (CAS'07, SPH'09) and Alexander Paiva (CAS'06, MED'08) ■
Evelyn N. Palm (SPH'07) and Henry F. Palm ■
Julie R. Palmer (SON'80, SPH'85) ■ ■ ■
Samantha E. Parker (SPH'14) ■ ■
Mrugesh N. Patel (CAS'12) ■
Beverly A. Pavasaris (SPH'83) and Walter M. Pavasaris (SED'93) ■
Michael Paydos ■
Frank Peloso and Mary Jane Peloso
Gina M. Peloso (CAS'04, GRS'11) ■
Justin Pendarvis (SPH'04)
Barbara M. Perry (SPH'83) and Steven Perry ■
Priya P. Persad (SPH'14) ■
Ella C. Pestine (CAS'16, SAR'16)
Jean O. Peteet (SPH'83) ■
Junenette L. Peters (GRS'94, '00) ■ ■
Victor P. Petralia (CAS'66) and Bette B. Petralia ■
Constance L. Phillips (SPH'91) and Stephen J. Hines ■ ■ ■
Niko M. Phillips-Dias (SPH'96) and Martin Dias ■
Emma Pinjic (SPH'06) and Esad Sinanovic ■ ■ ■
Gail C. Post (SPH'95) and Christopher V. Post
Jessica Prapath
Deborah Putnam (SSW'92, SPH'94) ■
Le P. Quan ■ ■
Valerie Quaye (SPH'16)

James F. Queenan (SPH'85) and Melody L. Queenan ■
Janice E. Quigley (SON'71) and Peter D. Quigley
Gina M. Quinlivan (SPH'97) and Joseph Quinlivan
Virginia A. Quinn ■ ■
Rose G. Radin (SPH'09, '14) and Jacob Hyman ■ ■
Elham Rahmani (SPH'16)
Sujana Rajkarnikar (SPH'15) ■
Angelica C. Ramirez (SPH'14) ■
Priya G. Ranade
Alanna C. Raskin (CGS'14, SAR'16, SPH'16)
Jirair Ratevosian (SPH'07) ■
Sharon H. Ravid (SPH'07) and Michael Ravid ■ ■
Sarah M. Raymond (ENG'04, Questrom'13)
Samuel E. Read
Karen B. Rehder (SON'80, SPH'86)
Peter Reich (SPH'79) ■ ■
Stephanie Oddleifson (SPH'88)
Elizabeth L. Reidy (SPH'15) ■
Jacob P. Reilley-Luther (SAR'16, SPH'16)
Alexandra L. Restina (SPH'16)
Lauri C. Rich ■ ■
Alicia K. Ridenour (SPH'14, SSW'14)
Claire Y. Ridge (SPH'94)
Katherine E. Riley (SPH'12)
Christine L. Rinehart (CAS'02)
Jamie M. Ring (SPH'04) and Sean Ring ■
Christina Rios (SPH'14, SSW'14)
Whitney K. Robbins (SPH'88) ■
Nicole G. Robertson (SPH'16)
Carissa L. Rodrigue (LAW'09, SPH'10) ■
Melissa J. Rodriguez-Vodak (SPH'16)
Rey F. Rosario (SPH'95) and Kathie Rosario
Jonathan Rosen
Adam H. Rosenbloom (SPH'05) and Sera A. Bonds (SPH'04) ■
Abigail M. Ross (SSW'08, SPH'10, GRS'16) ■ ■
Julie B. Ross (SPH'00) ■
David J. Roston
Emily Rothman ■
Kathleen M. Rowlings (SPH'96) ■
Dennis J. Roy (Questrom'91) ■
Dan Rozman and Lisa Rozman
Vincent J. Russo (MED'64, SPH'83) and Sheila K. Russo ■
Betty J. Ruth (SSW'84, SPH'85) and Ken S. Schulman ■ ■ ■
Naomi C. Sacks (SPH'13)
Alan P. Sager and Sandra Bornstein ■ ■ ■
Hiroki Saito (SPH'11) and Kayoko Saito ■
Richard Saitz (CAS'87, MED'87) and Angela H. Jackson ■ ■
Sylvia Salas (SPH'97)
Betsy B. Sandberg (SPH'96) ■
Elana J. Sandler (SSW'05, SPH'06) ■
Jyothirmai Sarabu
Linda L. Saunders (SPH'84) and Richard C. Saunders ■
Monica Sawhney (CAS'08, SPH'09) ■
Marwa N. Sayed
Madeleine L. Scammell (SPH'08) ■ ■

THOSE WHO HAVE MADE A GIFT TO THE COLTON-CUPPLES VISITING SCHOLARS FUND:
Daniel Alford
Theodore and Carolyn Colton
Michael J. Corwin
L. A. Cupples
Josee Dupuis
David Gagnon
Jane Hale
Timothy Heeren
Yuxin Jiang
Herbert Kayne
Dzidra Knecht
Leslie Kolterman
Michael LaValley
Suzette Levenson
Kathryn Lunetta
Joseph Massaro
Mary Murphy-Phillips
Julie Palmer
Frank Peloso
Gina Peloso
Virginia Quinn
Mark Roseman
Lisa Rozman
Freda Scotch
Lisa Sullivan
Fangui Sun
William Waller
Janice Weinberg

Nicole M. Schenk (CAS'16, SAR'16, SPH'16)
Abigail B. Scherrer (CGS'88, CAS'90, SPH'10) and Karl Scherrer
Anna Schmid
Alina M. Schmidt (SPH'08) ■
Freda L. Scotch (SPH'80) ■■
Stephen A. Scotch-Marmo (CAS'78) and Malia Scotch-Marmo (CAS'78)
Nancy A. Scott (SPH'13) ■■
Diana Seufert (SON'82) ■
Janet A. Shahood (SPH'89) ■
Karen B. Shapiro (SPH'88) and Michael Goldaber ■
Kimberly M. Shea (SPH'06,'11) ■■
Allyson C. Shifley (BUA'08, CAS'14, SPH'14)
Juliette E. Shih (CAS'93, SPH'97) ■
Sheila R. Shulman (SPH'87) and Lawrence Shulman ■■
Mary B. Shupe (SPH'90) and Jeffery T. Shupe ■
John Sikes (SPH'00) ■
Abigail E. Silber (CAS'16, SPH'16)
Koundinya P. Singaraju (SPH'02)
Scott T. Slater (SPH'90) ■
Arthur M. Small (SPH'16) ■
Toni L. Snow (CAS'80, SPH'86) ■
Andrew Solomon (SPH'12)
Leslie D. Spaneas (SPH'89) and Edward L. Loechler
Beryl W. Spencer (SPH'80) ■
Ann B. Spires (SPH'09) ■

Margaret R. Stedman (SPH'00, GRS'09) and Edmund W. Stedman
Rachel A. Stein Berman (MED'10, SPH'10) and Yonah Berman ■■
Lori C. Stetz (SPH'98)
Gretchen M. Stoddard (SPH'12)
Sarah L. Stone (SPH'05,'14) ■
Samantha R. Straitz ■
Erica L. Streit-Kaplan (SSW'00, SPH'01) and James H. Kaplan (CAS'97, LAW'00) ■
Sarah P. Strothkamp (SPH'11)
Joyce T. Su (CAS'93, SPH'95) ■
Brianna D. Sullivan (SPH'14)
Katherine B. Sullivan (SPH'15)
Kelsey Sullivan (CAS'16, SPH'16)
Caroline D. Suminski (SPH'16)
Fangui J. Sun ■■
I. Antoinette Sutherland (SPH'95) ■
Edward A. Szkutak (SPH'08) and Karla J. Szkutak ■■
Nermeen A. Tahoun (SPH'16, SSW'16)
Lorraine D. Talbot (SPH'85) and Peter B. Talbot ■
Lauren M. Tamburello (SAR'16, SPH'16) ■
Elise M. Tamplin (SPH'87) and David Tamplin
Yaqing Tang (SPH'16)
Alison B. Tarmy (SSW'99, SPH'00) and Jeffrey Tarmy ■
Maya H. Tatsuno (Questrom'13, SPH'13) ■
Melissa R. Taylor (SPH'95)
Theresa G. Taylor (SPH'84) and Michael R. Taylor ■
Ashley E. Thomas (SPH'14) ■■
Claire E. Thomas (ENG'16, SAR'16, SPH'16)
Natalie C. Thomas (SPH'16, SSW'16)
Robert M. Thomas (SPH'15, SSW'15) ■
Lisa A. Thomas-Prince (SPH'97) ■
Nicholas J. Thomson (CGS'13, SAR'15)
Eileen M. Thorley (SPH'09) ■
Andrew J. Ting (GRS'91, MED'96) and Maribeth Ting ■
Andrea M. Tingue (CAS'10, SPH'13) ■
Thelma A. Tisdale (SPH'90) and John Tisdale
Brooke Elizabeth Tomblin (SPH'94) and James E. Marca
Evette D. Toney (SPH'01)
Catherine C. Torri (SPH'16)
Aisha Townes
Wendy E. Trafton (SPH'07) ■
Nathaniel L. Tran
James F. Traniello (CAS'74) and Dina A. Traniello (SPH'84, SED'99) ■
Alayna I. Tress (SPH'12) ■
Scott Troppy (SPH'98) ■
Lois B. Trusten (SON'77) and Howard D. Harris
Monica T. Turner (SPH'15)
Barbara N. Tuthill (SPH'82) and W. Lee Tuthill ■
Edward A. Valle (SPH'16)
Francis J. Veale (SPH'14) ■
Andrew Solomon (SPH'12)
Leslie D. Spaneas (SPH'89) and Edward L. Loechler
Beryl W. Spencer (SPH'80) ■
Ann B. Spires (SPH'09) ■
Leslie C. Verploegen (SPH'12) ■

Taryn Vian (UNI'10) and Donald K. McInnes ■■
Naya E. Villarreal (SPH'12)
Madeline K. Wachman (SPH'15, SSW'15) ■
Rachel E. Wacks
Alan A. Waker (SPH'93) and Mary L. Keenan ■
Lori R. Wallace (SPH'08)
William J. Waller and Lois L. Waller ■■
Rebecca A. Walmer (SPH'16)
Tim Walmer ■
Diana C. Walsh (COM'71, UNI'83) and Christopher T. Walsh ■■
Susan Walton-Cizik (SPH'93) and Peter N. Cizik ■
Alan Wang (Questrom'16, SPH'16) ■
Catharine Wang ■■
Na Wang (GRS'13) ■■
Lillian M. Ward (SPH'14) ■
Sophia B. Ward (SPH'12) and James F. Ward
Thomas F. Webster (SPH'00) and Christine Poff ■■
Tara T. Weckstein (SPH'93) and Douglas J. Weckstein ■
Carolyn J. Wehler (SPH'01) and Adam H. Wagman ■
Janice M. Weinberg ■
Emily C. Welch (SAR'16, SPH'16)
Robert M. Welton (SPH'01) and Rosa Welton ■
Julie H. Wicklund (SPH'95) and David P. Wicklund ■
Sarah Wigman
Kelsey L. Williams (SPH'11)
Michele V. Williams (SPH'98) ■
Francisca O. Williams-Oni (SPH'16)
Rachel A. Wilson (SPH'97)
Michael R. Winter (CAS'87, SPH'93) ■■
Theodora C. Wohler (SPH'96)
Cheryl M. Wold (SPH'90) ■
Michele A. Wolfsberg (SPH'02)
Emily Y. Wong (SPH'12)
Shirley Y. Wong (CAS'07, SPH'11) ■
Marvin S. Wool (SPH'82)
and Constance B. Wool ■
Stephen B. Woolley (SPH'06) and Rebecca Stockdale ■
Joan Wright-Andoh (SPH'86) and Jacob Y. Andoh ■
Zachary G. Wyner (SPH'15) ■
Ziming Xuan ■
Frances S. Yee (SPH'90)
Olga Yevtukhova (LAW'10, SPH'11) ■
Rong Yi (GRS'01, '02) and Danhai Mu
Rojda F. Yuzbasioglu (CGS'13, SAR'15) ■
Amy L. Zapata (SPH'97) and Socrates Zapata ■
Eva G. Zaret (SPH'16)
Amy L. Zastawney (SPH'93) and John P. Andreliunas ■
Steven M. Zerbini
Yuqing Zhang (SPH'93) ■■
Lujia Zhou (SPH'16)
Molly Zielenbach (MED'16, SPH'16)
Dory T. Ziperstein (SPH'13, SSW'13)

CONTACT US

Leslie Kolterman
Assistant Dean, Development & Alumni Relations
lkolt@bu.edu
617-638-4092

Beverly Brown
Director of Development, Industry
babrown@bu.edu
617-353-2200

Michael O'Brien
Director, Development & Alumni Relations
mobrien1@bu.edu
617-638-4016

Arielle Fischer
Development and Donor Relations Coordinator
asf22890@bu.edu
617-638-4658

Shaneice Sheen
Development Coordinator
sheense@bu.edu
617-414-8428

Contributing Writers
Arielle Fischer
Michelle Samuels

FOLLOW US!

 facebook.com/BUSPH

 twitter.com/busph

 youtube.com/channel/UCSPSG4QPjN3pS78Iroxww4A

 linkedin.com/groups/141544

 instagram.com/busph

 pinterest.com/busph



MARY JANE ENGLAND (MED'64, Hon.'98) is a renowned leader in the care and treatment of children and families, an advocate for community mental health services, former president of Regis College, and a longtime supporter of the Schools of Public Health and Medicine. Dr. England's connections to the School of Public Health run deep—an SPH clinical professor in the Department of Health Law, Policy & Management, she was also chair of the School's first Advisory Committee, which spearheaded the renovation of the Talbot Building

in the mid-90s. Her daughter, Alexandra England, is an SPH alumna, class of '94. A firm believer in the School's mission of service to the community who wants to set a philanthropic example for others, Dr. England has established two charitable gift annuities totaling \$100,000 to benefit a School of Public Health initiative. She chose this type of giving because it offered her a way to make a meaningful gift while securing a fixed income stream for the future. "It's a great option," she says, "because it allowed me to make a gift while I was

still actively involved and passionate about the School; the best time to be inspired! Why wait?" Dr. England hopes that her charitable gift annuities will inspire others to support SPH. For more information on planned giving, please contact Michael O'Brien, Director, Development & Alumni Relations, at mobrien1@bu.edu or 617-638-4016 or visit bu.edu/sph/alumni/give/planned-giving/.

THE CLAFLIN SOCIETY

The Claflin Society honors alumni and friends who have provided for Boston University in their estate plans, or who have established life income gifts with the University. Since the 1985 founding of the Claflin Society, membership has grown to nearly 800 friends and alumni. The following Claflin Society members have considered SPH in their planning:

Anonymous

Laura A. Armstrong (SPH'81)

Amy Aulwes (SPH'94)

Patricia O'Dea Coughlin (SON'73, SPH'79)

Lawrence Cross (SPH'93)

Priscilla J. Elliott (SPH'90)

Mary Jane England (MED'64)

Robert F. Meenan (MED'72, Questrom'89)

Peter Reich (SPH'79)

Kurt Trampusch (SPH'87)

For more information on planned giving, visit bu.edu/sph/alumni/give/planned-giving.



SPH Convocation, Agganis Arena, May 14, 2016

Boston University School of Public Health
Development & Alumni Relations

715 Albany Street, Boston, MA 02118
617-638-4658

bu.edu/sph

bu.edu/give