

Anna Howard Shaw Center
Welcomes

Eriko Sase

*Research fellow at Takemi Program in International
Health at Harvard School of Public Health*

I Don't Want to be Troublesome to my Family

*Illness Experiences of Former
Korean Leprosy Patients*

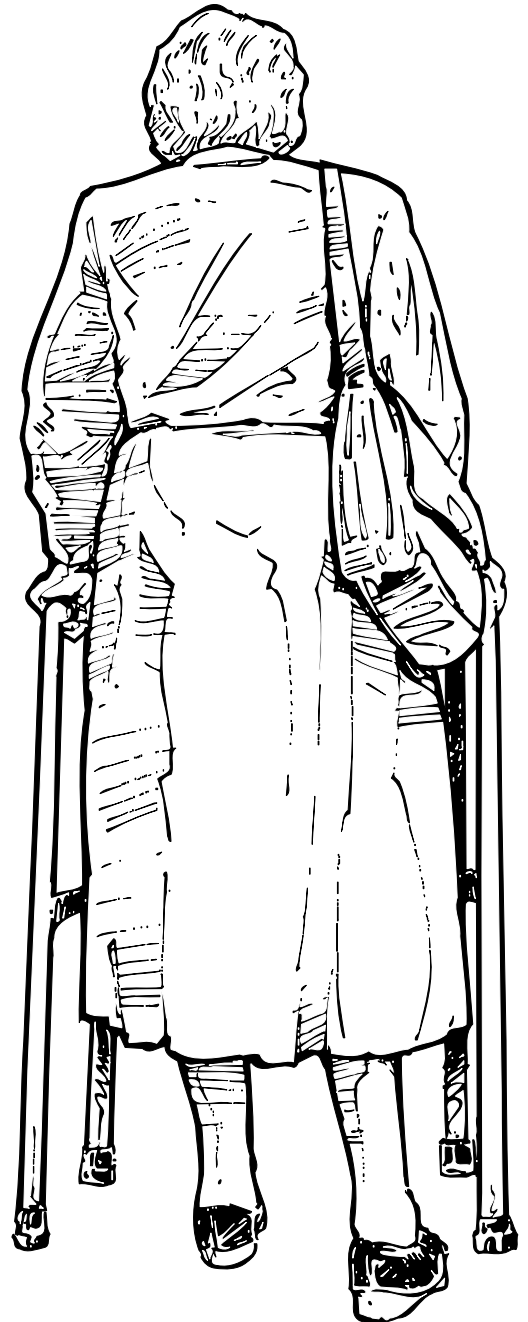
Numerous countries used isolation policies to protect people from leprosy prior to the discovery of drug to treat the disease.

In 2002, 759 Koreans stayed in a national leprosarium despite the policies cessation in 1963.

Little was known about why they stayed after 19th centuries progress in medicine, health policy and public health.

Interviews with 13 elderly patients revealed how they perceived, lived with and responded to leprosy and their interactions with family and society.

They demonstrated that stigma, deformity and self-prejudice led them to stay in the leprosarium, where they could avoid being “troublesome” to their families.



When? Thursday, Jan. 26, at noon

Where? Anna Howard Shaw Center (Rm. 320)