

# *R h e t t T a l k s :*

M e a s u r i n g L e a r n i n g O u t s i d e t h e C l a s s r o o m

---

Daryl Healea

Associate Director for Student & Staff Development  
Boston University Residence Life

11,500 beds

| 6 | b u i l d i n g s

27 live-in  
professionals

I 6 Faculty - in - Residence

280 RAs

53 Hall Council Leaders

3 0 0 - 4 0 0 V o l u n t e e r s



R e s i d e n c e   A d m i n i s t r a t i o n

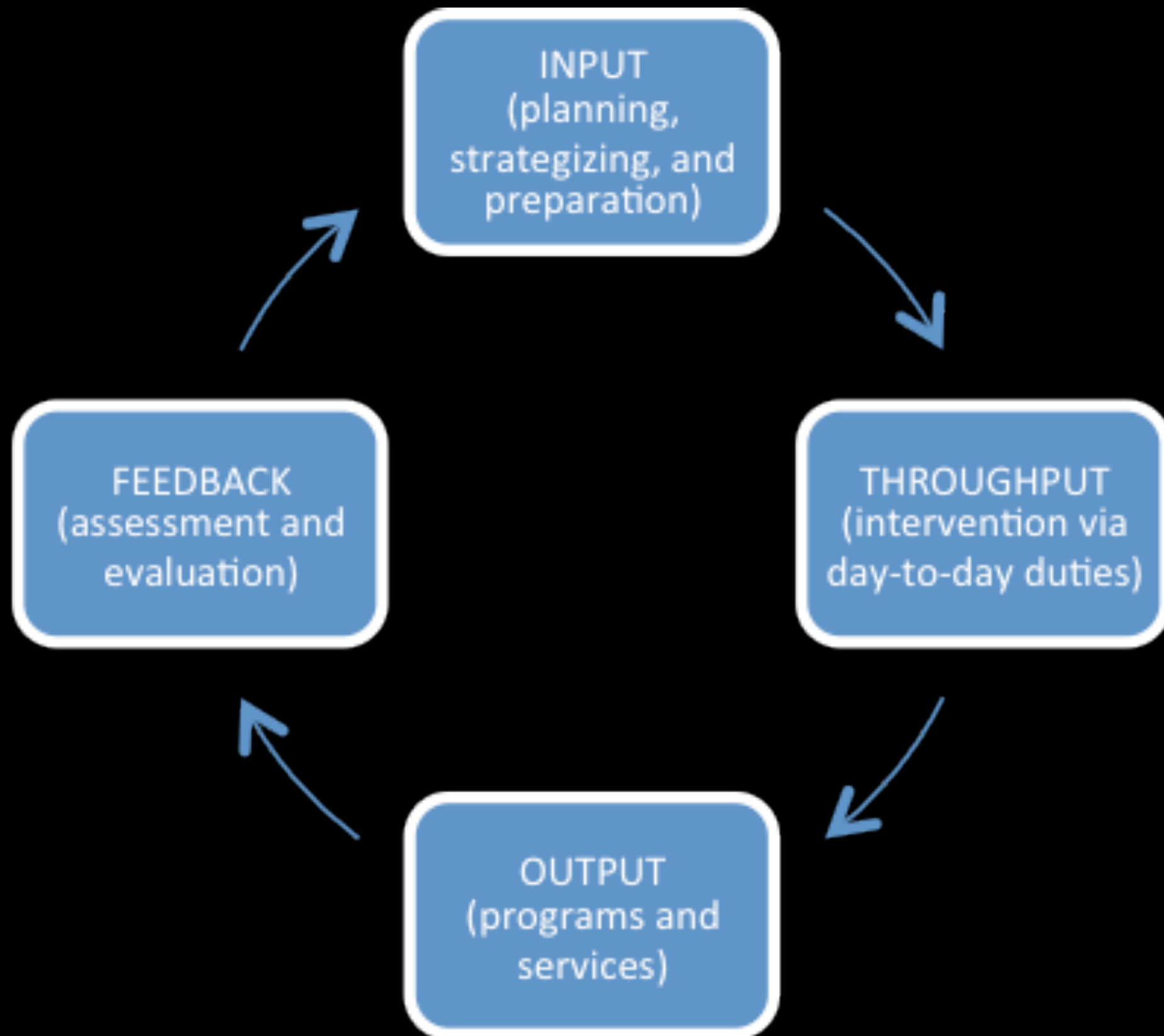
S t a f f   S u p e r v i s i o n

C o m m u n i t y   S t a n d a r d s

C r i s i s   I n t e r v e n t i o n

L e a r n i n g   I n i t i a t i v e s

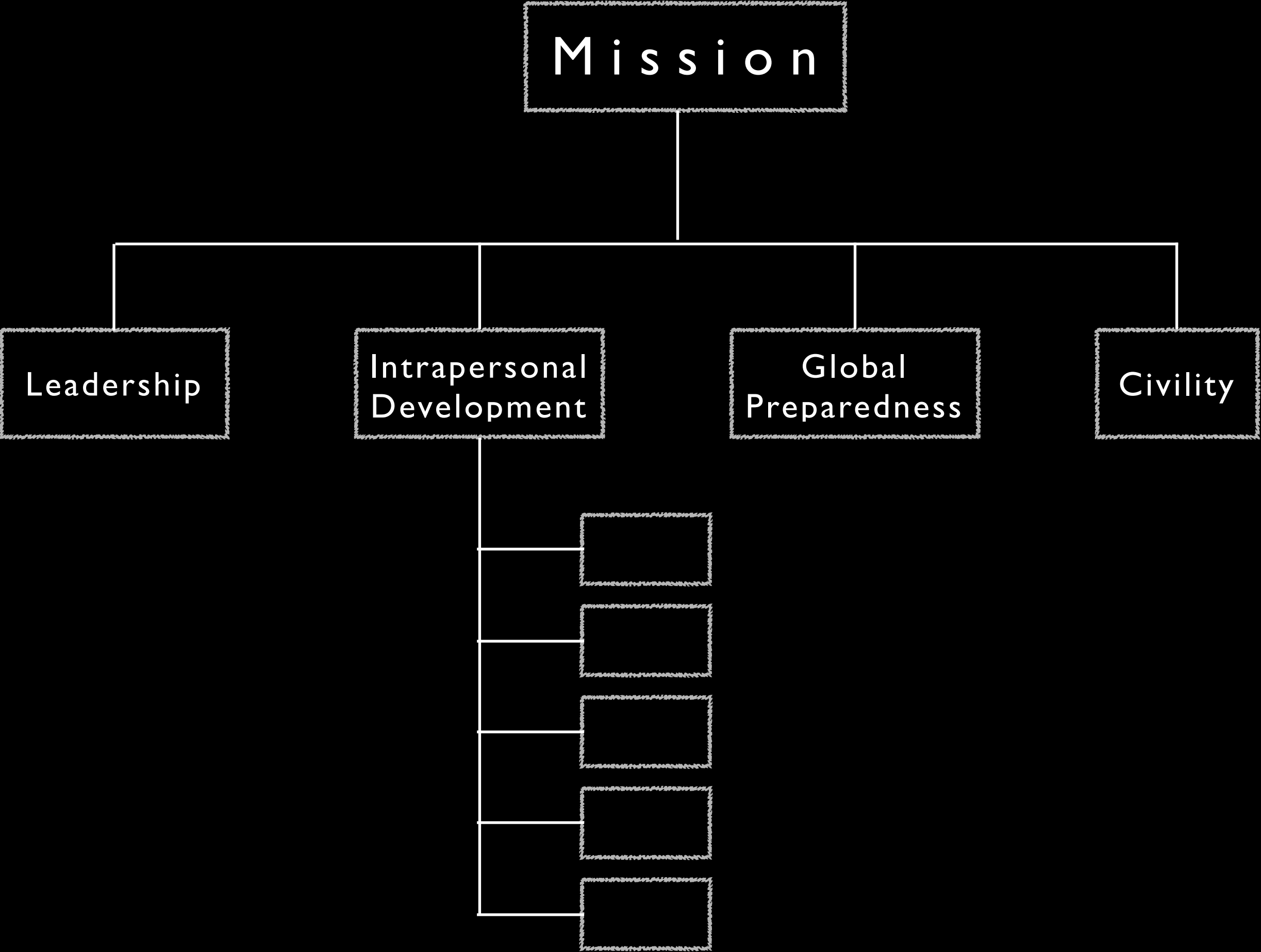








Council for the  
Advancement of  
Standards in Higher Education







*R h e t t   T a l k s*





# TED TALKS

Ideas worth spreading







HEAR  
TALK



## Rhett Talks

Rhett Talks explores the great intellectual breadth that is found across our University's many schools and colleges. It also allows faculty members of all levels to experience student life in a new way.



## Rhett Talks

Rhett Talks is BU's version of the popular TEDx talks. Listen to some of our University's best faculty give brief, innovative, and engaging presentations outside of the classroom!

# Learning Outcomes for *Rhett Talks*

Students will demonstrate an affective appreciation for the intellectual climate of their experience outside the classroom by attending each *Rhett Talks* event.

Students will demonstrate a familiarity with faculty and engage in student-faculty interactions outside the classroom at each *Rhett Talks* event.

Students will explore subjects outside their major/discipline at each *Rhett Talks* event.

# Assessment of *Rhett Talks*

Direct observations

Unstructured interviews

Survey of participants

# Assessment of *Rhett Talks*

Direct observations

Unstructured interviews

Survey of participants

# Assessment of *Rhett Talks*

Direct observations

Unstructured interviews

Survey of participants



# Survey of Participants

Item	2013	2014
Response Rate	10%	7%
Intellectual climate (1-5)	3.26	3.96
Enhanced learning (1-5)	3.30	3.96
Broadened appreciation for other disciplines (1-5)	3.67	3.96
Familiarized with faculty (1-5)	3.61	3.96