



Welcome to

the ARTEMIS PROJECT 2014

At Boston University

Sophie Lehar



- ♦ From Manchester, MA
- ♦ Rising junior at BU
- ♦ Major: Computer Science
- ♦ I've never broken a bone
- ♦ I really enjoy ice-skating, playing board games, minecraft, gardening, trying new foods, and drawing.
- ♦ My favorite animals are birds!

History of the Artemis Program

- Artemis was founded in 1996 at Brown University
- Artemis expanded to BU in 2011
- This is the fourth year of Artemis at Boston University
- The mission of Artemis is for young women to learn computer science and engineering by:



- ❖ Engaging in hands-on activities, programming, learning theory based concepts
- ❖ Interacting with female role models who are also passionate about their research and careers
- ❖ Having fun and gaining confidence in their abilities

A Typical Day at Artemis

9:00 – 9:20

- Arrive at 9:00 (on Babbitt Street)
- Warm up / brain teaser

9:20 – 10:30

- First Computer Lab Period

10:30 – 10:45

- Snack Break (snacks not provided)

10:45 – 11:50

- Second Computer Lab Period

11:50 – 1:00

- Lunch Break (at the George Sherman Union Building)

1:00 – 2:00

- Classroom Period

2:00 – 2:45

- Speaker / Classroom Period

2:45 – 3:00

- Wrap Up
- Pick Up at 3:00

WHAT WILL YOU LEARN?

MORNING LESSONS

- Scratch
- App Inventor
- HTML/CSS
- Python
- Sphero
- Lego Mindstorms
- Arduinos



AFTERNOON LESSONS

- Circuits
- Cryptography
- Artificial Intelligence
- Set Theory
- Search and Sort Algorithms
- Graph Theory

Monica Martin



- ♦ From Boston, MA
- ♦ Rising junior at BU
- ♦ Major: Computer Science
- ♦ I know how to sew
- ♦ I like playing video games, watching Game of Thrones, and baking delicious pastries
- ♦ My favorite animal is a cat!

Guest Speakers

One of the goals of Artemis is to provide girls with female role models!

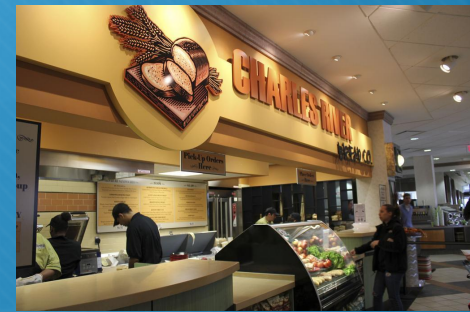


- Presentations from BU professors and CS professionals working in industry. We'll hear about their research and learn about some of the most cutting edge discoveries in CS.
- Some speakers may provide demonstrations and interactive activities

Lunch Options

Each day: \$8.00 in dining points will be given to each student on a terrier card.

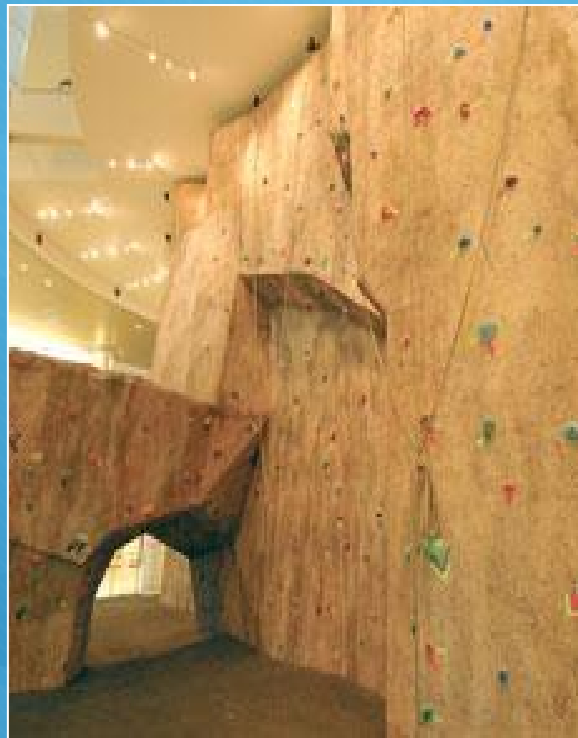
- o Starbucks
- o Rhett's (diner food, grill, Richardson's ice-cream)
- o Panda Express (Chinese food)
- o Loose Leafs (salad)
- o Charles River Bread Company (sandwiches)
- o Pinkberry (frozen yogurt)



Friday Field Trips

In the past we've gone to...

- FitRec (Rock Climbing)
 - MIT Museum and Workshop
 - Google
 - IBM
 - Microsoft
 - Field Day
- and many more!



Sridevi Suresh



- ♦ Born in India, from Princeton, NJ
- ♦ Rising junior at BU
- ♦ Major: Math and Computer Science
- ♦ I know how to belly-dance
- ♦ I like figure skating, writing stories, reading horror books, eating food, and singing Disney songs
- ♦ My favorite animal is a lion!

PRESENTATIONS

Students will present a topic they learned about at Artemis. This offers a chance for the young women to show you what they have learned, but also cultivate real-life career skills!



What: Presentation & Reception

Where: PHO 206

When: Thursday, July 31st 3:00 – 5:30 PM

Who: Family and friends are invited!



Conduct

- Students may only visit websites relevant to the Artemis curriculum (no Facebook, Twitter, Tumblr, Blogs, etc...unless we are programming it 😊)
- Cell phones must be put away and turned off unless for emergencies, or during breaks
- Keep the lab clean! Food is not be allowed in the lab. Water bottles must a have safety cap.
- We expect students to treat their peers, the coordinators, and guest speakers with respect. **We have a zero tolerance policy for bullying.**



Conduct (cont.)

- We expect students to be attentive and respectful at all times, **especially when on field trips and when we have guest speakers.** You are representing Artemis and Boston University, and we want to make a good impression.
- If a student will be absent, please give advance notice if possible! If you are running late, please call us at the Artemis number as soon as possible.

Esther wu



- ♦ From Cerritos, CA
- ♦ Rising senior at BU
- ♦ Major: Economics, with a minor in Computer Science
- ♦ I was a girl scout for 8 years
- ♦ I like going to concerts, jogging, and arts & crafts.
- ♦ My favorite animal is a mouse!



Special Notes to Parents

- Parents may call the coordinators during regular program hours in case of emergency. *Please do not call/text your daughter directly during program hours as her phone will be off!*
- After the program, we can be contacted via:
 - o Email at artemis@bu.edu, or
 - o Voicemail at (617) 528-0985
- You have indicated on the transportation form how you wish for your daughter to get home from Artemis, we will be sure follow your wishes
- Public Transit: Green B Train to BU Central; Bus: 57, stop: St. Mary's



General Tips

- o Wear comfortable clothing (sneakers, etc.) and bring a water bottle. We will be doing outdoor activities!
- o Bring a sweater or a sweatshirt. The building is air conditioned.
- o Come with an open mind & ready to meet new friends!





QUESTIONS?

**Artemis number:
(617)-528-0985**