

# “Doing it Up Right”

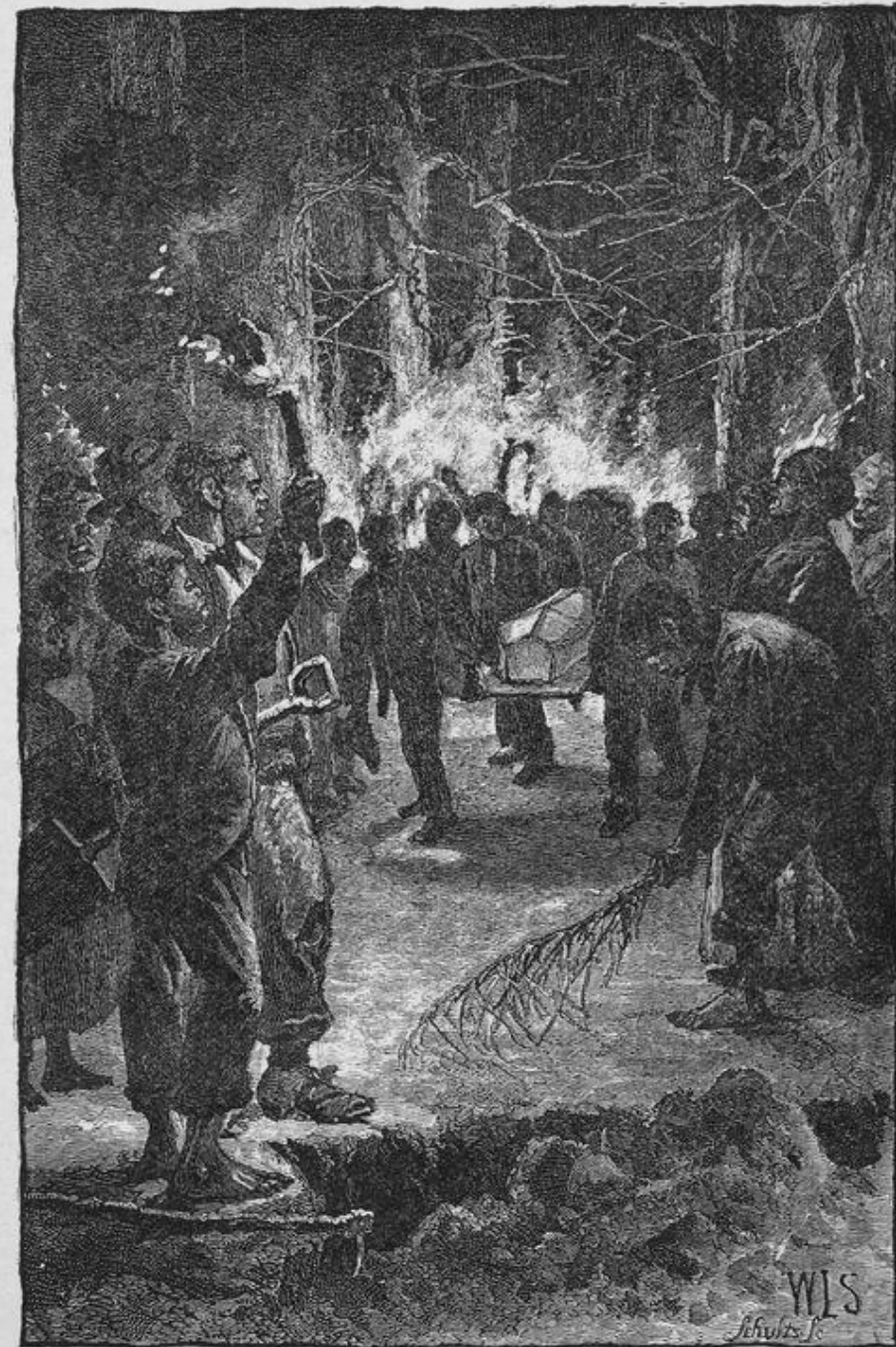
Safeguarding the African-American Burial Landscape  
Through the Lens of Eden Cemetery

Presented by Charlette Caldwell  
Master's of Science in Historic Preservation  
University of Pennsylvania, School of Design









An old-time midnight slave funeral.







# Research Question:

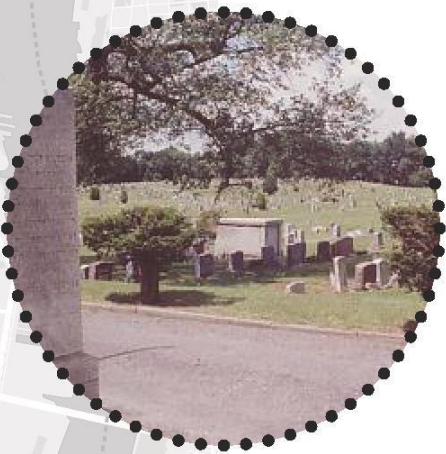
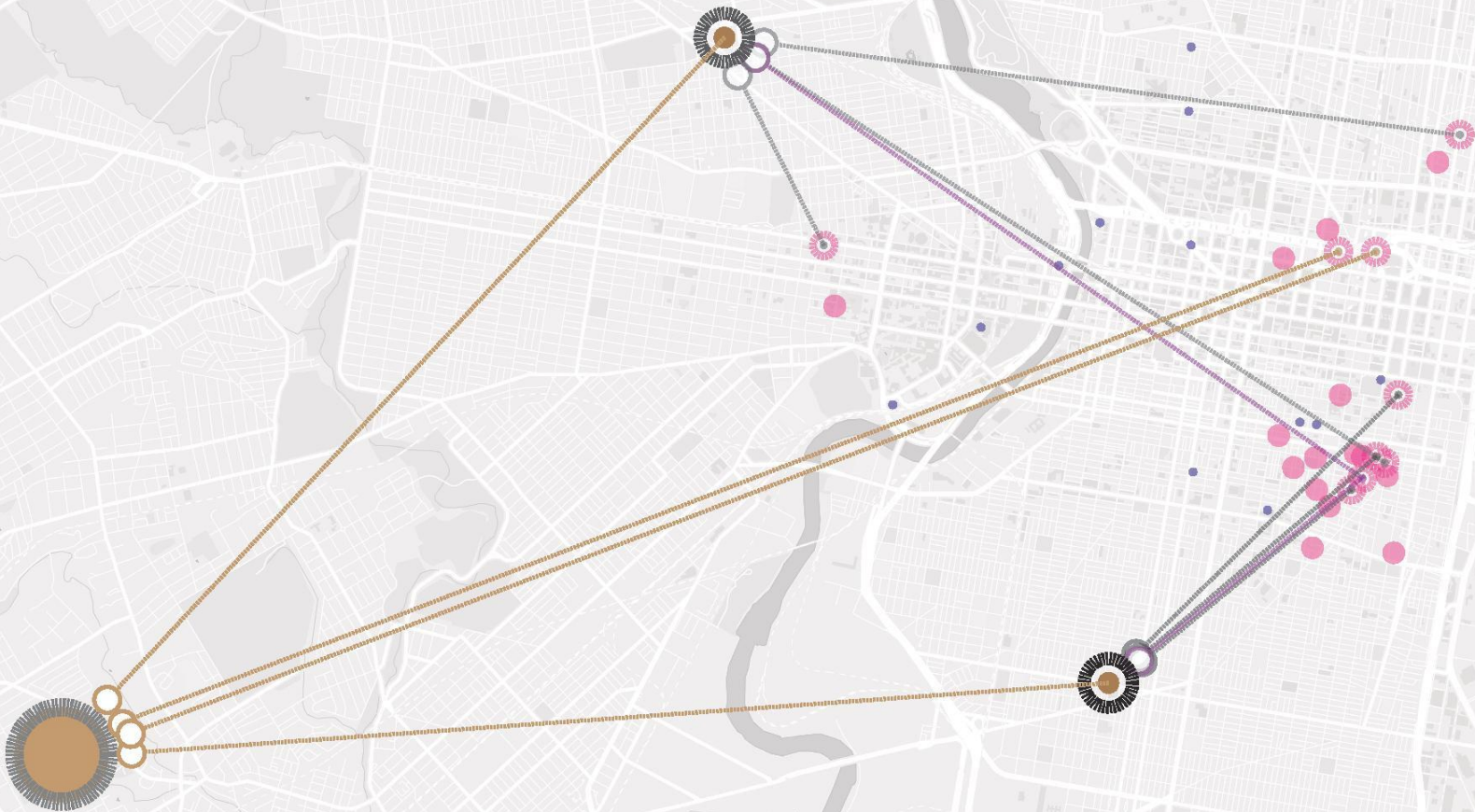
- How do we design a standard preservation approach to safeguard the African-American burial landscape that is sensitive culturally and socially by using Eden Cemetery as a lens to analyze and interpret these values, resulting in a tangible plan that educates people about this aspect of American history?



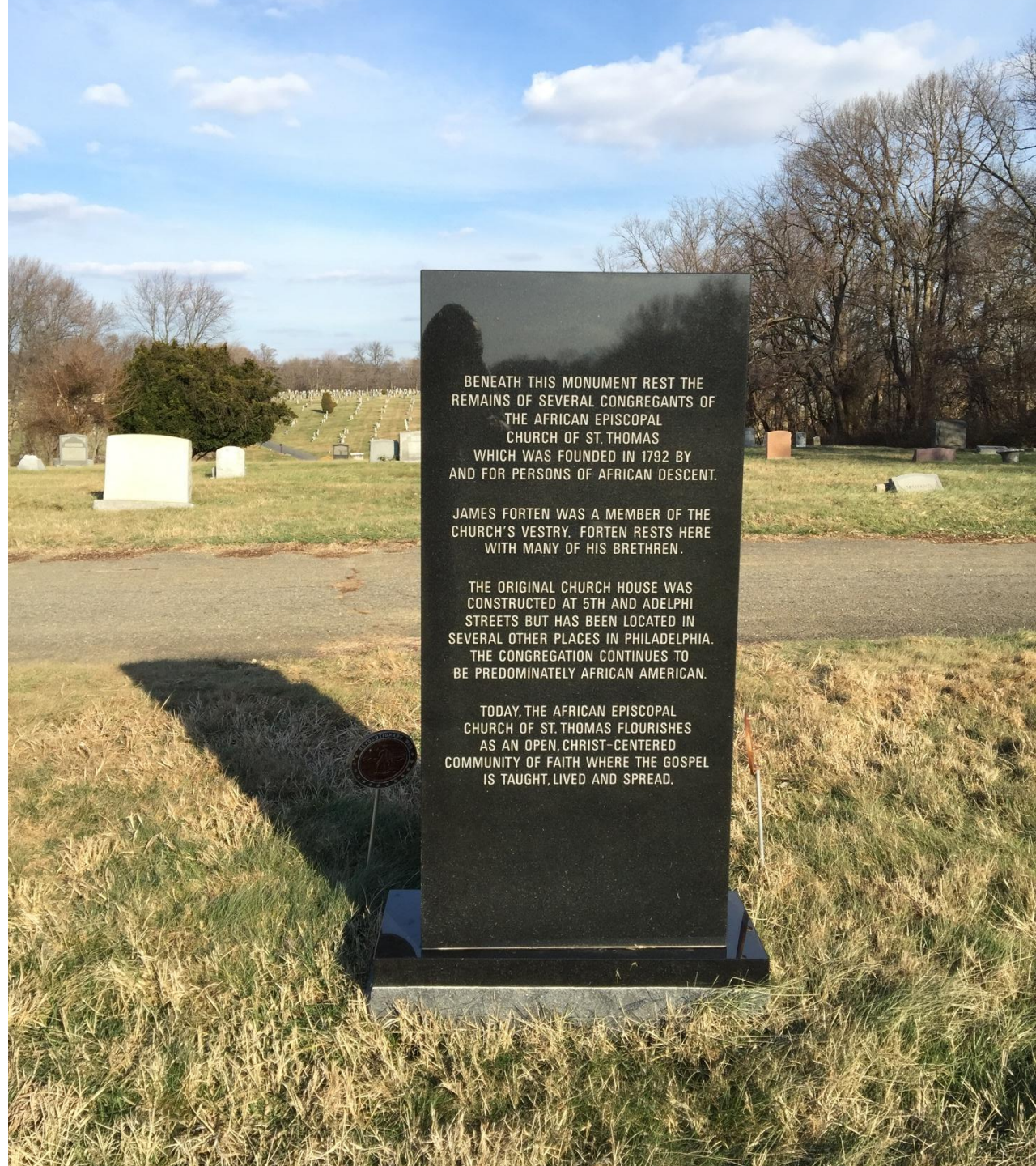
### 3. AFRICAN-AMERICAN CEMETERY TYPOLOGIES \_ PHILADELPHIA \_ 20TH CENTURY SUBURBAN CEMETERY

#### LEGEND

- Known Potter's Fields
- Churchyards
- Olive Cemetery
- Lebanon Cemetery
- Churchyards Relocated to Lebanon
- Churchyards Relocated to Olive
- Eden Cemetery











JULIAN F. ABELE

1881 — 1950

DAUGHTER

MARGUERITE-MARIE

1929 — 1934

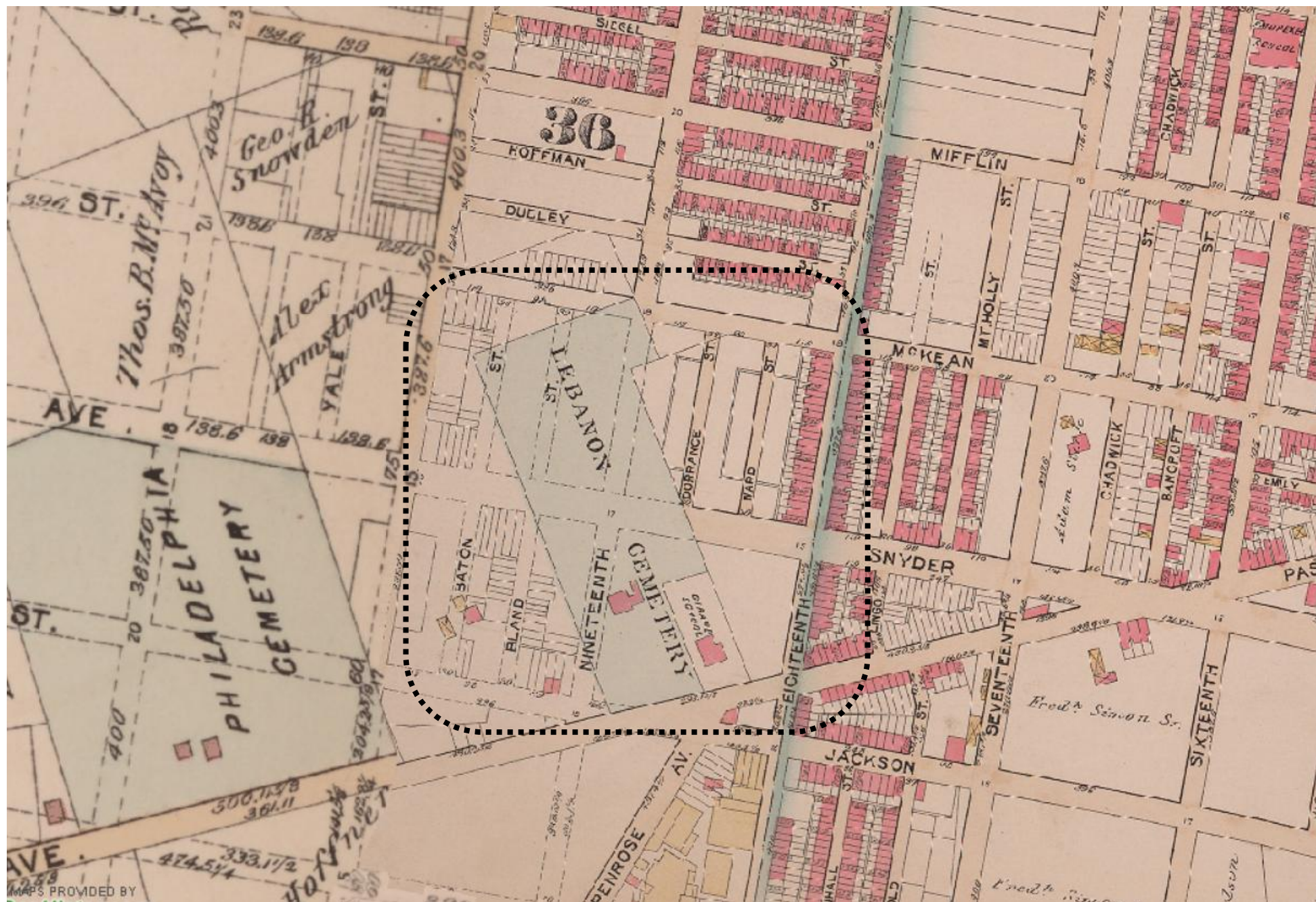


“Chapel of  
Lebanon  
Cemetery”,  
1850.



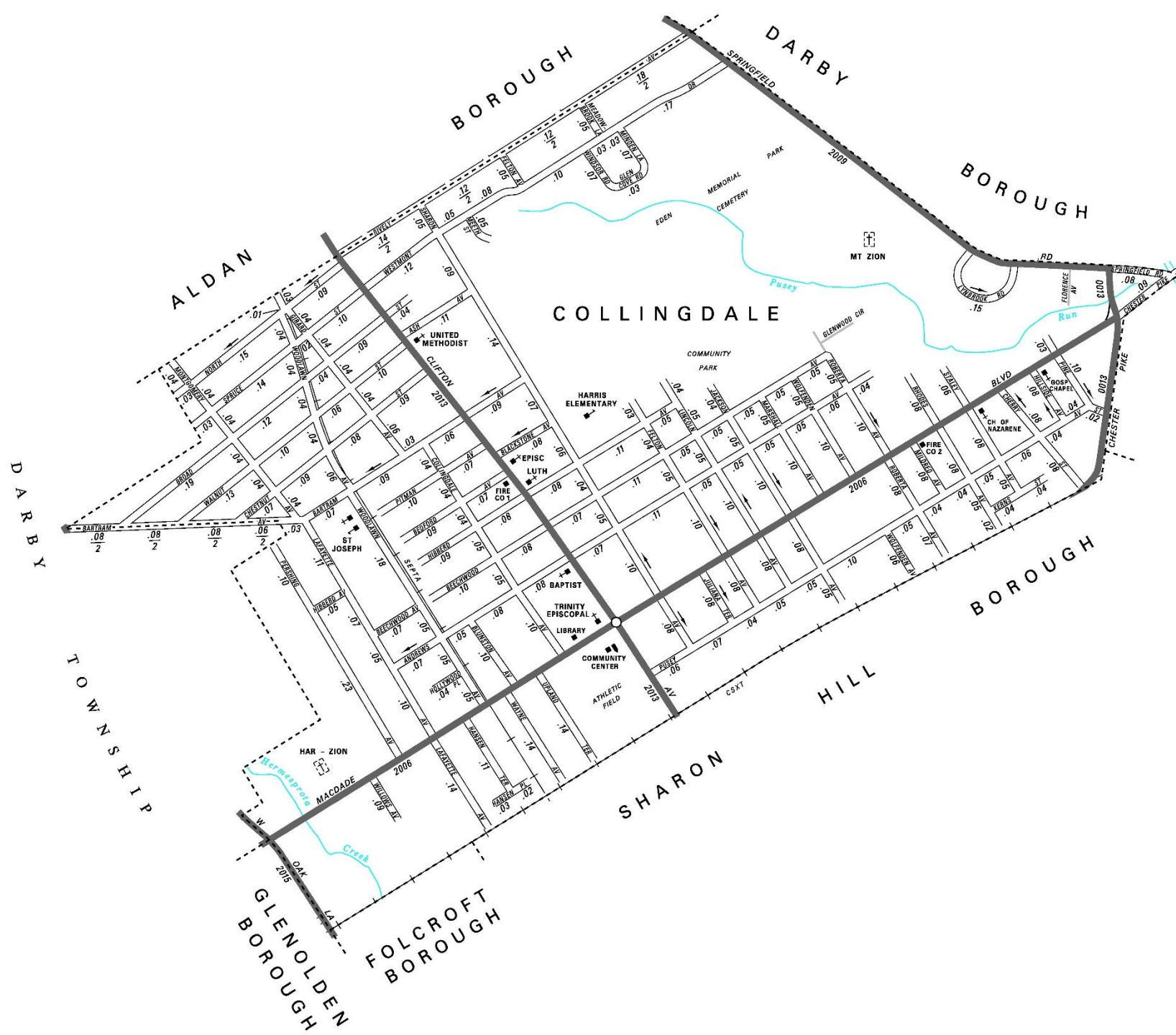
CHAPEL OF THE LEBANON CEMETERY





Lebanon Cemetery, Philadelphia, 1895.







ten the

## THE EDEN CEMETERY:

Too Much Doubt in the Case to Continue the Injunction.

In the case of the borough of Col-  
lingdale vs. the Eden Cemetery, Judge  
Johnson handed down an opinion yes-  
terday in the following words:

"Too much doubt in this case to con-  
tinue the injunction."

It will be remembered by the readers  
of the Times that this was an effort on  
the part of the Citizens and Council of  
the borough to prevent the establish-  
ment of a colored cemetery within the  
borough limits. On the hearing for the  
preliminary injunction counsel for the  
cemetery people argued that the bor-  
ough authorities had no right to dis-  
criminate against the cemetery, there  
already being one within the borough  
limits, and it not having been shown  
or alleged that said cemetery would be  
a public nuisance.

CASE

AGE

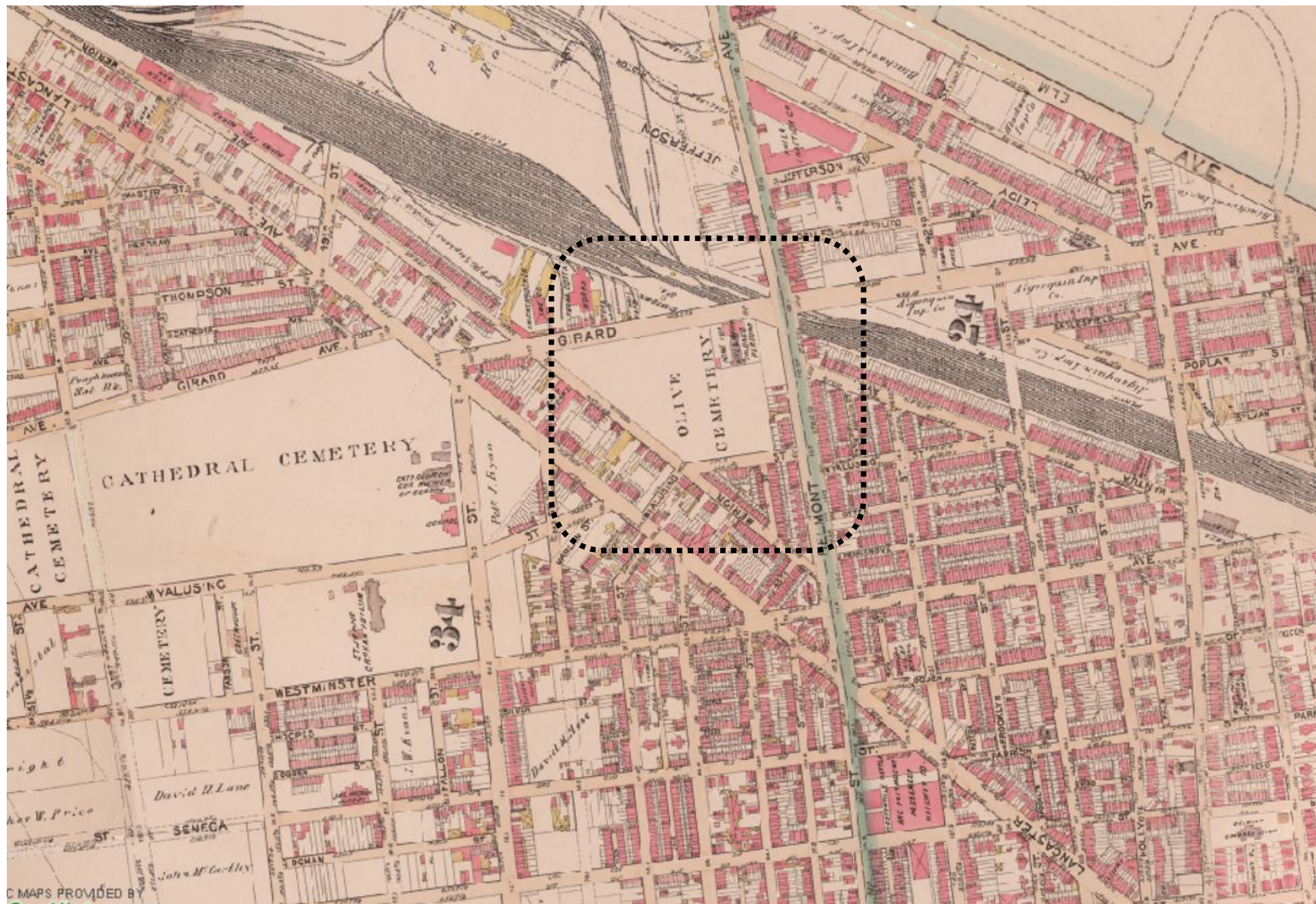
plaintiff is  
on the  
Johnson  
for his  
Traction  
n South  
he was  
nk. The  
Johnson  
he track  
o drunk  
ed yards

BENJ

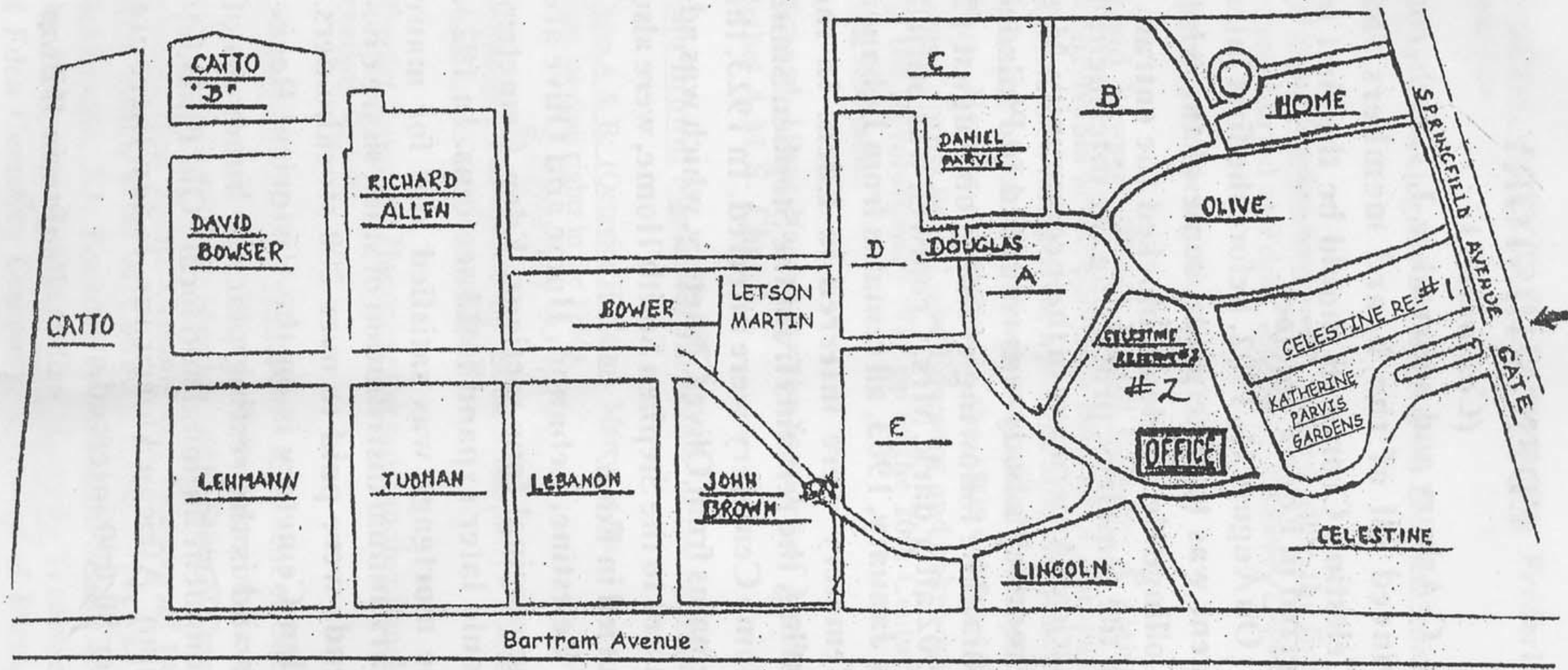
whom were w  
belonged in R  
to America in  
Gartside enga  
business in C  
in 1852 he set  
mills on the r  
ton street, th  
He was one o  
National Ban  
Cemetery and  
ter Mutual  
daughter, An  
Grant, of 316  
manager of t  
mill at Card



Olive  
Cemetery,  
Philadelphia,  
1895.







Eden Cemetery Burial Sections



# 5. PRESERVATION PLAN + POTENTIAL OUTCOMES



"Citizens of Eden"

Named after the first person buried in Eden



114	113	112	111	110	109	108	107	106	105	104	103	102	101	100	99	98	97	96	95	94	93	92	91	90	89	88	87	86	85	84	83	82	81	80	79	78	77	76	75	74	73	72	71	70	69	68	67	66	65	64	63	62	61	60	59	58	57	56	55	54	53	52	51	50	49	48	47	46	45	44	43	42	41	40	39	38	37	36	35	34	33	32	31	30	29	28	27	26	25	24	23	22	21	20	19	18	17	16	15	14	13	12	11	10	9	8	7	6	5	4	3	2	1
-----	-----	-----	-----	-----	-----	-----	-----	-----	-----	-----	-----	-----	-----	-----	----	----	----	----	----	----	----	----	----	----	----	----	----	----	----	----	----	----	----	----	----	----	----	----	----	----	----	----	----	----	----	----	----	----	----	----	----	----	----	----	----	----	----	----	----	----	----	----	----	----	----	----	----	----	----	----	----	----	----	----	----	----	----	----	----	----	----	----	----	----	----	----	----	----	----	----	----	----	----	----	----	----	----	----	----	----	----	----	----	----	---	---	---	---	---	---	---	---	---

**JOHN**

318	317	316	315	314	313	312	311	310	309	308	307	306	305	304	303	302	301	300	299	298	297	296	295	294	293	292	291	290	289	288	287	286	285	284	283	282	281	280	279	278	277	276	275	274	273	272	271	270	269	268	267	266	265	264	263	262	261	260	259	258	257	256	255	254	253	252	251	250	249	248	247	246	245	244	243	242	241	240	239	238	237	236	235	234	233	232	231	230	229	228	227	226	225	224	223	222	221	220	219	218	217	216	215	214	213	212	211	210	209	208	207	206	205	204	203	202	201	200	199	198	197	196	195	194	193	192	191	190	189	188	187	186	185	184	183	182	181	180	179	178	177	176	175	174	173	172	171	170	169	168	167	166	165	164	163	162	161	160	159	158	157	156	155	154	153	152	151	150	149	148	147	146	145	144	143	142	141	140	139	138	137	136	135	134	133	132	131	130	129	128	127	126	125	124	123	122	121	120	119	118	117	116	115	114	113	112	111	110	109	108	107	106	105	104	103	102	101	100	99	98	97	96	95	94	93	92	91	90	89	88	87	86	85	84	83	82	81	80	79	78	77	76	75	74	73	72	71	70	69	68	67	66	65	64	63	62	61	60	59	58	57	56	55	54	53	52	51	50	49	48	47	46	45	44	43	42	41	40	39	38	37	36	35	34	33	32	31	30	29	28	27	26	25	24	23	22	21	20	19	18	17	16	15	14	13	12	11	10	9	8	7	6	5	4	3	2	1
-----	-----	-----	-----	-----	-----	-----	-----	-----	-----	-----	-----	-----	-----	-----	-----	-----	-----	-----	-----	-----	-----	-----	-----	-----	-----	-----	-----	-----	-----	-----	-----	-----	-----	-----	-----	-----	-----	-----	-----	-----	-----	-----	-----	-----	-----	-----	-----	-----	-----	-----	-----	-----	-----	-----	-----	-----	-----	-----	-----	-----	-----	-----	-----	-----	-----	-----	-----	-----	-----	-----	-----	-----	-----	-----	-----	-----	-----	-----	-----	-----	-----	-----	-----	-----	-----	-----	-----	-----	-----	-----	-----	-----	-----	-----	-----	-----	-----	-----	-----	-----	-----	-----	-----	-----	-----	-----	-----	-----	-----	-----	-----	-----	-----	-----	-----	-----	-----	-----	-----	-----	-----	-----	-----	-----	-----	-----	-----	-----	-----	-----	-----	-----	-----	-----	-----	-----	-----	-----	-----	-----	-----	-----	-----	-----	-----	-----	-----	-----	-----	-----	-----	-----	-----	-----	-----	-----	-----	-----	-----	-----	-----	-----	-----	-----	-----	-----	-----	-----	-----	-----	-----	-----	-----	-----	-----	-----	-----	-----	-----	-----	-----	-----	-----	-----	-----	-----	-----	-----	-----	-----	-----	-----	-----	-----	-----	-----	-----	-----	-----	-----	-----	-----	-----	-----	-----	-----	-----	-----	-----	-----	-----	-----	-----	-----	-----	-----	-----	-----	----	----	----	----	----	----	----	----	----	----	----	----	----	----	----	----	----	----	----	----	----	----	----	----	----	----	----	----	----	----	----	----	----	----	----	----	----	----	----	----	----	----	----	----	----	----	----	----	----	----	----	----	----	----	----	----	----	----	----	----	----	----	----	----	----	----	----	----	----	----	----	----	----	----	----	----	----	----	----	----	----	----	----	----	----	----	----	----	----	----	---	---	---	---	---	---	---	---	---

**CHARLEY** PROPOSAL PRESENT

Synthesizing records with site map

**JOHN C. ASBURY**  
(1862-1941)

A prominent African American Republican who as legislator sponsored a statewide civil rights bill in 1921 that served as a model for future efforts. He was a philanthropist, a founder of Eden Cemetery and Mercy Hospital, and editor of Odd Fellows Journal.

Location of a future interpretive center

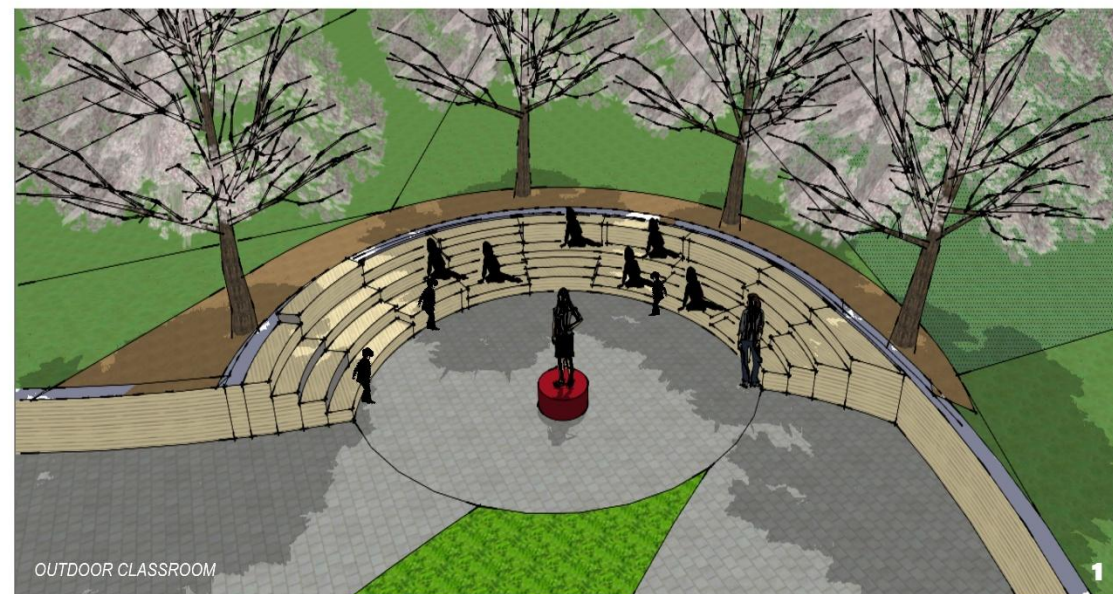
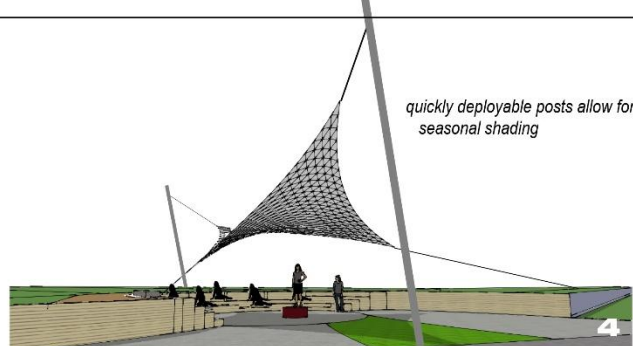






Memorial Garden Project Eden Cemetery





1. AERIAL VIEW OF  
OUTDOOR CLASSROOM  
WITH TREE CANOPY  
OPTION

2. VIEW OF OUTDOOR  
CLASSROOM, TENT  
OPTION AND INTERIOR  
OF RESTORED VAULT

3. AERIAL VIEW OF  
CLASSROOM AND  
MEMORIAL GARDEN

4. VIEW OF OUTDOOR  
CLASSROOM, TENT  
OPTION



#### RESTORED VAULT

restoration of inside and outside, identify and repair any leaks  
removal of paint from stones, pointing, restoration of outside red door and inside metal gate  
repair plaster on ceiling and walls, replace cement floor, possibilities for lighting of interior

## The Friends of Historic Eden Cemetery Memorial Garden and Education and Interpretive Center





## MEMORY WALL

wall inscribed with names and testaments  
reflective, meditative, simple

## GARDEN

bench as center piece  
wall for engraving of names  
low maintenance

## PATH

Existing path to remain  
New spaces straddle the existing path  
Patch and repair existing defects  
Improve and flatten path leading to vault

## BERM

Spaces "carved out" from existing grade  
Berm grass and planter rises to meet back  
of seating

## OUTDOOR CLASSROOM



Tiered seating focused on a  
central speaker location, seats  
groups of 25  
simple, provides seating  
use of recycled materials  
located back from driveway  
closer to creek

## SHADE

temporary, initial shade provided by easily deployable canvas canopy  
semi-circle of trees provide dappled shade in the long term

## RESTORED VAULT

restoration of inside and outside, identify and repair any leaks  
removal of paint from stones, pointing, restoration of outside red door and inside metal gate  
repair plaster on ceiling and walls, replace cement floor, possibilities for lighting of interior

interior conditions to be addressed



# The Friends of Historic Eden Cemetery Memorial Garden and Education and Interpretive Center



HISTORIC  
EDEN CEMETERY

≈ Est. 1902 ≈

NATIONAL REGISTER OF HISTORIC PLACES

MONUMENTS FOR SALE



Thank you !