

An aerial photograph of a city street, likely in New York City, showing a mix of urban architecture, trees, and a multi-lane highway at the bottom. A large green banner with red text is superimposed over the center of the image.

Transforming Cummington Mall: A Walkable, Climate-Friendly Future

By: Zakaria Elkawa, Zain Ahmed, & Ankit Patro

Problem Identification



Lack of Sign Identification



Isolated Green Space



Absence of bike-specific space



Lack of Parking Enforcement

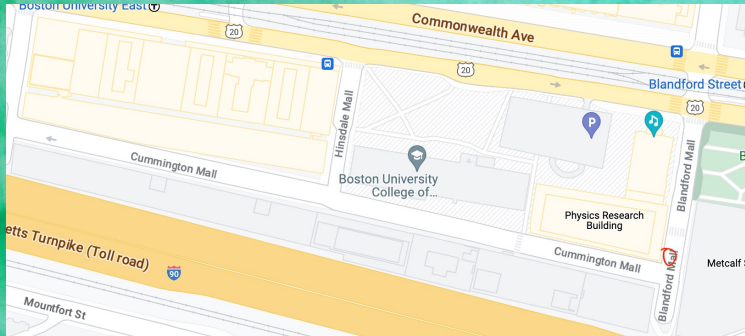


No Crosswalk Infrastructure

Non-Welcoming
(Especially near-Cummington Stairs)



Lack of Sign Identification: Recommendations



- Utilize existing Signage on BU Campus (Continuity)
- Specifically Place at Start of Cummington Mall (Red Circle on Map)
- Opportunity to add BU style with Cummington Mall street sign
- Emphasizes clearly that area is marked for deliveries

Isolated Green Space: Recommendations



- Add wooden plank potted plants to protect the proposed bike lane on the right side of the road
- Space available for additional potted plants, and even potential for a community garden on Mechanical Engineering Court
- Calls upon future collaboration with Rain Garden on Cummington Mall Project (development of rain gardens to replace nine-barren tree trunks on left side of street)

Absence of bike-specific space: recommendations

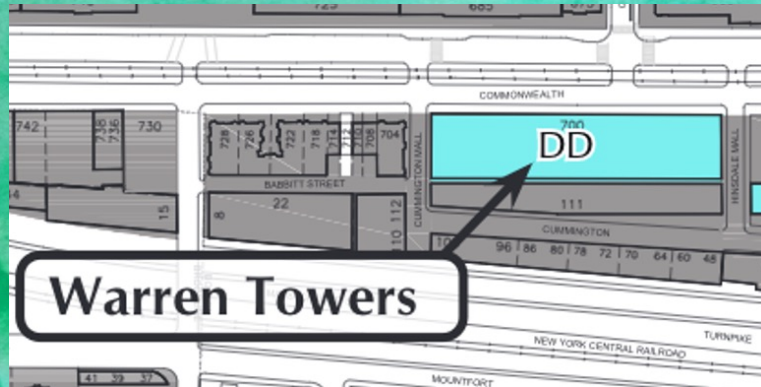


- Build a double-sided green bike lane on the right-hand side of Cummington Mall, coming in from Blandford Mall
- Maximizes bike-presence and allows left-hand side to be used for delivery parking
- Renovation for Warren, beginning in Winter 2024, provides an opportunity to trial a permanent bike presence

Lack of Parking Enforcement: Recommendations



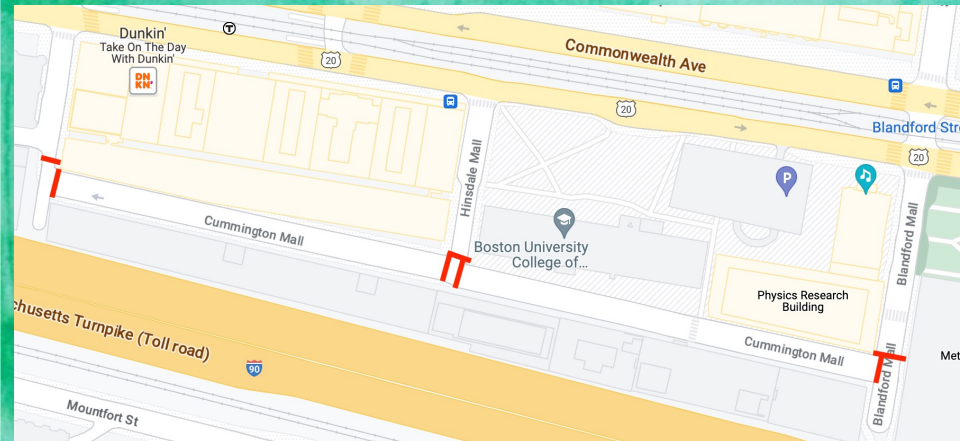
- Increase size of no-parking signs from their current 6x12 dimensions, to standard city regulation 12x18 (Keep Black and Red to maintain BU familiarity)
- Fill in left hand side of the road with red paint to discourage civilian parking
- Renovation for Warren will block off upper right side of the road, need to shift parking to left side to centralize delivery driver/maintenance parking



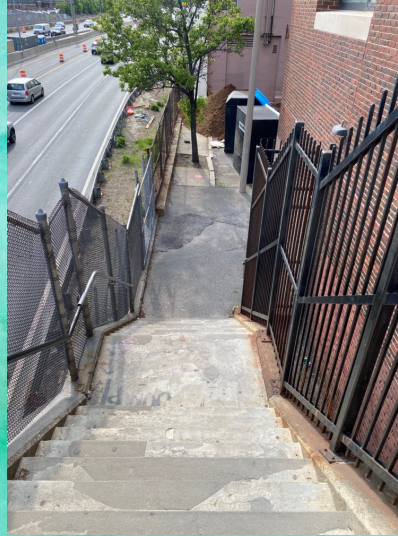
No Crosswalk Infrastructure: Recommendations



- Build white crosswalks at every intersection marked on this map
- Particularly at the intersection of Hinsdale and Cummington Mall, where this is greater foot traffic, the opportunity for a mural
- Given the proximity to engineering buildings, we will in future semesters put out calls for murals related to engineering
- The crosswalk at the entrance to Cummington from Hinsdale should run parallel to proposed bike lane



Non-Welcoming: Recommendations



- Holding more BU events like SPLASH at Cummington Mall bi-annually (As was done before)
- Back-stairs entrance has been noted as creepy by students, consider adding light fixture
- Introduce BU participation in Park(ing) Day (**Third Friday in September**) utilization of parking spots on Cummington, and spots on BU private property for student creativity, encouraging tactical urbanism
- Ex)

Park(*ing*)Day

