

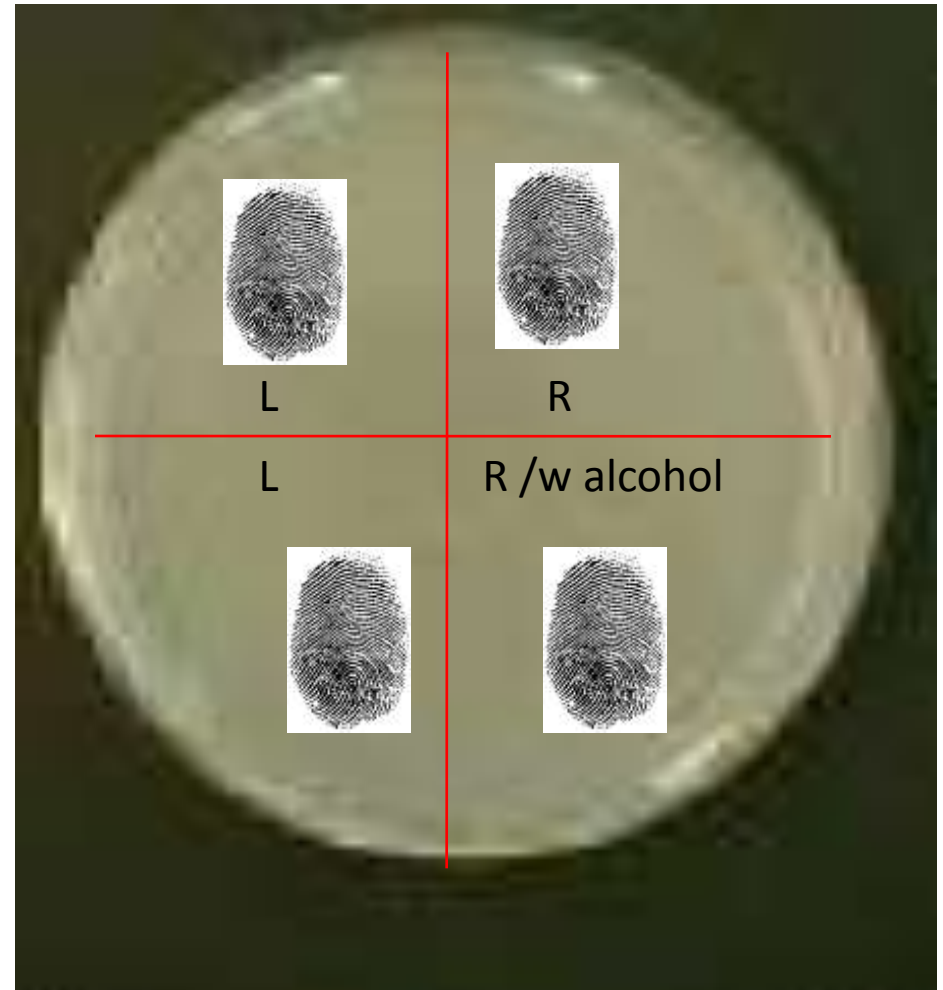
Effectiveness of alcohol

- Alcohol is used as an antiseptic in hospital settings
- We use it to disinfectant our lab benches
- The active ingredient in sanitizers such as in Purell
 - 70% EtOH diluted with dH₂O
 - Penetrate membrane
- Denature Proteins
- Dissolve Lipids (membranes)



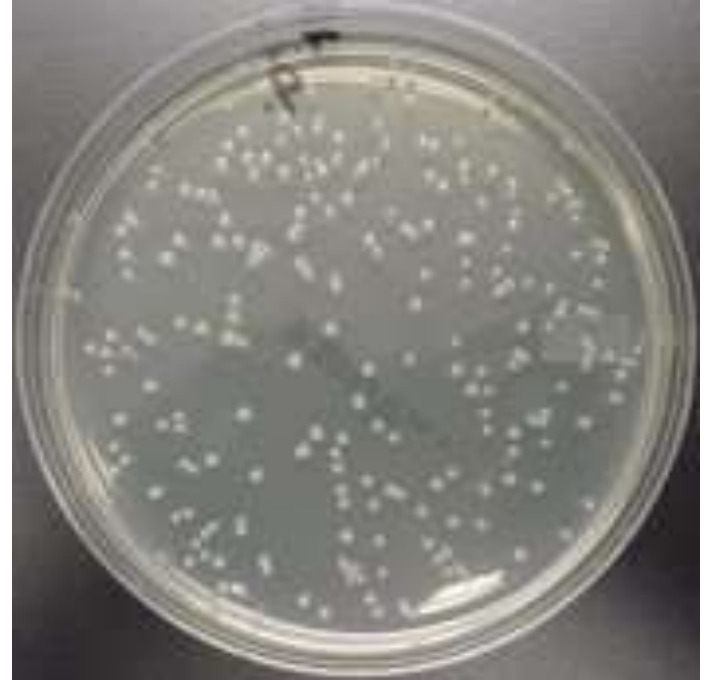
Lab Activity: Effectiveness of alcohol

- Left side
 - Control
 - Touch top and then bottom quadrant
- Right side
 - Touch top quadrant
- Wash thumb w alcohol
 - Ethanol
 - Alcohol wipe
 - Purrell



Alcohol evaluation

- Count colonies
- Colony
 - Single dot on plate
 - 1 single cells divides giving rise to a colony



X 100

Percent Reduction =
(colony count 1st press)-(colony count 2nd press)
(colony count 1st press)