

# Health Resources in Action

---

Boston University Meet the Funder  
March 28, 2023

March 28, 2023



**Health Resources in Action**  
*Advancing Public Health and Medical Research*



**Innovative ideas, multi-sector partners, and creative solutions.** At HRiA, we improve population health by catalyzing social change within and among individuals, institutions and communities.

As a public health institute, a belief and commitment to equity is central to our work. We believe that good health is a right, not a privilege. So, how do we as a society attain **health equity**? How do we ensure health and safety in the places where we live, work, and play? How do we ensure equitable access to information, fair distribution of resources, adequate investment in biomedical research, and empowerment of citizens? **This is our work.**

For HRiA, health equity is where population health, policy, research, and practice come together. We work at the junction of these approaches helping clients and funders in private philanthropy; local, state, and federal government; community organizations; and health care systems address and solve some of the nation's most fundamental health challenges.

### **Our Vision**

A world where social conditions and equitable resources foster healthy people in healthy communities.

### **Our Mission**

To help people live healthier lives and create healthy communities through prevention, health promotion, policy and research.

# Health Resources in Action

## Biomedical Research Grantmaking

---



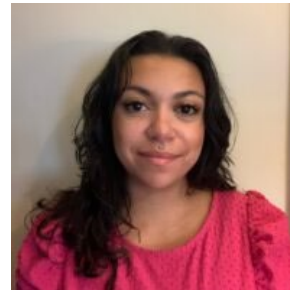
Lara Bethke  
Chief  
Scientific Officer



Lindsey Carver  
Senior  
Grants Officer



Felicia Chen  
Grants  
Associate



Kaitlyn Figueroa  
Grants  
Coordinator



Jennifer Lee  
Vice President,  
Grantmaking



Kimberly Lezak  
Managing  
Director



Charlene Mancusi  
Director,  
Hood Foundation



Lindsay Redman Rivera  
Grants  
Officer

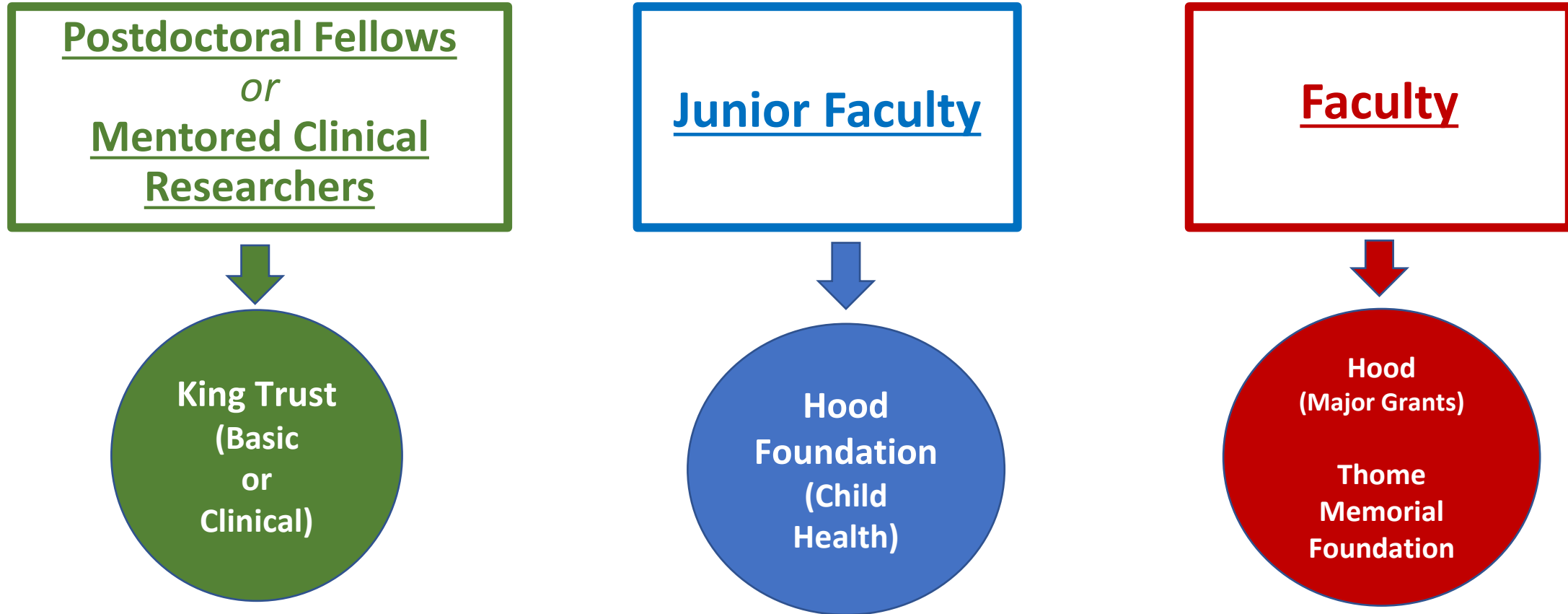


Tina Ta  
Grants  
Officer



# Programs by Career Stage\*

---



**Noonan Memorial Fund – No Career Stage Exclusions**

\* Please note this slide includes only those programs being discussed today; visit <https://hria.org/work-in-action/biomedical-research/program-chart/> for additional opportunities managed by HRiA





*Since 1942, the Hood Foundation has carried on the legacy of founder Charles H. Hood by funding groundbreaking and innovative pediatric research in and around the New England area.*

*The Foundation makes meaningful pediatric medical advancements possible by providing funding in the key stages of development, enabling high-impact projects to both begin and succeed earlier.*

*Supporting brilliant minds early in their careers helps position promising researchers to secure long-term funding from other private and government sources, thereby building the talent pool of innovative medical researchers that will continue to impact the health and well-being of children and their families in New England and around the world.*





Three established funding mechanisms:

- 1. Child Health Research Awards Program** *(further details on next slide)*
  - Designed to support early-career investigators
  - Posted biannually via open RFA to New England area institutions
- 2. Major Grant Initiative to Advance Child Health** *(currently under internal review)*
  - Aim to support outstanding senior investigators
  - Limited to short list of invited institutions, including BU
- 3. Program-Related Investments** *(PRIs, distinct from grant programs)*
  - Seek to fill the gap between translational research and clinical development and application of pediatric-related initiatives
  - Limited to for-profit, start-up companies seeking seed-stage investors





## Child Health Research Awards Program

### Eligibility Basics

- Junior faculty leading **independent research programs** (generally within 5 years of employment following completion of all training for applicants with PhDs and 7 years for MDs)
- Research must be **relevant to child health** but should not focus on pregnant women or fetuses
- Proposals must be **hypothesis-driven**
- Open to projects across the research spectrum (clinical, basic science, public health, health services delivery, epidemiology) and translational science continuum

### Award Details

- \$200,000 over two years (inclusive of 10% max indirect costs)

### RFA Schedule

- Posted biannually, by early February for July funding and by early August for January funding
- Award recipients announced each June and December



## Child Health Research Awards Program

### About support from other funding sources...

*(separate from start-up package, other intramural support or Hood award)*



#### Eligible

- Combined federal and non-federal funding totaling < \$500,000
- Includes NIH K Award and R00 phase of K99/R00
- Notification of R01 funding *after* application deadline will not impact eligibility



#### Ineligible

- Combined federal and non-federal funding totaling  $\geq$  \$500,000
- R01, P01, Pioneer Award, New Innovator or Early Independence Award
- Current or prior large multi-year awards over \$700,000 from other federal agencies or national foundations



# Child Health Research Awards Program

## Current Application, Decision & Funding Timeline

**NOW**

*Visit*

<https://hria.org/tmf/Hood>

**April 3<sup>rd</sup>**

*Submission  
Deadline*

**June 2023**

*Funding  
Determinations*

**July 2023**

*Funding  
Begins*



# Deborah Munroe Noonan Memorial Research Fund

---

## Program Mission & Scope of Supported Work

### Mission

The Deborah Munroe Noonan Memorial Research Fund, established in 1947 by Frank M. Noonan in memory of his mother, continues its proud tradition of supporting improvements in the quality of life for children with disabilities. Eligible organizations and target populations must be within the Fund's geographic area of interest of Greater Boston.

### Scope of Supported Work

The Noonan Research Fund supports innovative clinical and service system research and demonstration projects in the greater Boston area, designed to improve the quality of life for children and adolescents with disabilities as reflected in the target population description.



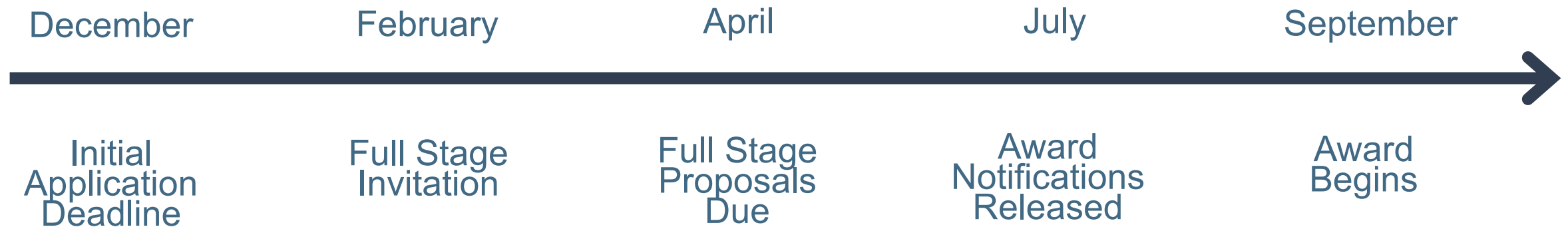
# Deborah Munroe Noonan Memorial Research Fund

---

**Award Period:** September 2023 – August 2025

**Funding Amount:** \$160,000 over 2 years (20% max indirect)

## Cycle Timeline



# Deborah Munroe Noonan Memorial Research Fund

---

## Eligibility



### Applicant or Project Team

- Seniority and/or area of expertise do not affect eligibility
- Must hold a position at a nonprofit institution or organization within the Fund's geographic area of interest
- "Nothing about us without us"
- Neither an academic faculty position nor an advanced degree is required nor considered preferentially
- U.S. citizenship not required
- While not required for funding consideration, the Noonan Fund may support new or continuing collaborations on projects between academic institutions and/or other non-profit institutions



### Participant Population

- Children and adolescents with a chronic physical, developmental, behavioral, or emotional diagnosis who require a combination of special and or interdisciplinary services, individualized supports, therapies, or other forms of services or supports that are of lifelong or extended duration.
- Geographic area of interest
- Inclusive of women and minority groups



### Exclusions

- Basic science, direct service, primary prevention projects, device development, drug trials
- Capital Costs



# Thome Memorial Foundation Awards Programs in Alzheimer's Disease and Age-Related Macular Degeneration Research

---

## Program Mission

The Edward N. & Della L. Thome Memorial Foundation was created in 2002 to advance the health of older adults through the support of direct service projects and medical research on diseases and disorders affecting older adults. In 2022, the Thome Memorial Foundation, Bank of America, N.A. granted Health Resources in Action (HRiA) funding to oversee the continuation of its programs. In keeping with the Foundation's mission, the goal of the Alzheimer's Disease and the Age-Related Macular Degeneration Awards Programs are to support **research that will lead to improved therapies and therapeutic strategies**.

*Award Program focus (Alzheimer's Disease and Age-Related Macular Degeneration) alternate years. The 2024 cycle will focus on Alzheimer's Disease research.*

## Research Focus

Successful research proposals should fall along the preclinical research spectrum such that they can be "carried out using cell or animal models of disease; samples of human or animal tissues; or computer assisted simulations of drug, device or diagnostic interactions within living systems"<sup>1</sup>

Ineligible - Basic research and clinical trials are outside the scope of this program.

<sup>1</sup> Preclinical Research Definition: <https://ncats.nih.gov/translation/spectrum>



# Thome Memorial Foundation Awards Programs in Alzheimer's Disease and Age-Related Macular Degeneration Research

---

## Cycle Timeline

**Award Period:** March 2024 – February 2026

**Funding Amount:** \$500,000 over 2 years





# Thome Memorial Foundation Awards Programs in Alzheimer's Disease and Age-Related Macular Degeneration Research

## Eligibility



### Applicant or Project Team

- The administrative lead applicant must hold a faculty appointment at a non-profit academic, medical, or research institution in the United States.
- PIs must be independent investigators with demonstrated institutional support and specialized space and facilities needed to conduct the proposed research.
- Applicants and key personnel may not have funding for a similar project.



### Exclusions

- Current Thome Foundation Awardees
- Basic research and clinical trials are outside the scope of this program.



# Charles A. King Trust Postdoctoral Research Fellowship Program

---

The Charles A. King Trust was established in 1936 to “**support and promote the investigation of human disease and the alleviation of human suffering through improved treatment.**”

The program provides funding to postdoctoral fellows and clinical scientists in the mid to late stages of their research training to help them achieve their goals of becoming independent investigators in biomedical research.

## Diverse and Inclusive Research:

To promote and enable diversity in biomedical research, the King Trust is committed to awarding researchers *of all backgrounds*, including racial/ethnic groups that are underrepresented in science. The King Trust seeks to support the next generation of scientific leaders who are dedicated to creating a diverse, equitable, and inclusive research environment, and who contribute to the wider research community and promote positive research culture.



# Charles A. King Trust Postdoctoral Research Fellowship Program

---

## King Trust Basic and Preclinical Science Award Program

- Proposals in the basic sciences seek to increase our understanding of the underlying biological processes relevant to human health and disease. Preclinical sciences seek to move findings from basic research towards clinical application.
- This includes research projects involving animal, patient derived tissue or samples, or cell culture models seeking to understand basic science questions

- **King Trust Clinical and Implementation Research Award Program**

- Clinical or implementation research funded by this program support *human* studies
- Includes physiological research, behavioral science and health education research, translational research (the application of bench research to patient care), epidemiological research, health services and policy research, outcomes research, and research about healthcare delivery and population health, regardless of specialty or discipline.

Additional funding from the O'Brien Trust and Fortin Charitable Foundation supports research focused on **cancer or blindness** (not visual impairment).



# Charles A. King Trust Postdoctoral Research Fellowship Program

---

**Amount & Duration:** \$194,100 to \$215,000 total over 2 years (inclusive of 10% fringe allowance and flexible allowance of \$25K per year, indirect costs not allowed)

**Award Dates:** Oct 1, 2023 – Sept 30, 2025



# Charles A. King Trust Postdoctoral Research Fellowship Program

---



- Conducting mentored non-independent research in the state of **Massachusetts**.
- Postdoc or clinician scientist

- › Without clinical training

- 3-6 years full-time postdoctoral research experience
- Commit 90% protected time to research



- › With clinical training

- No more than 6 years full-time postdoctoral (or equivalent) research experience
- Commit 70% protected time to research
- Must have completed residency and clinical training. Award support may not overlap with fellowship support.



- Must have at least one peer reviewed research article.
- Cannot hold concurrent Career Development Award, including NIH K, F, KL2 or other equivalent award at the time of application



# Application Tips

---

- Make sure your proposal and all components of your application are responsive to the RFA and reflect all stated review criteria.
- Tell the story and provide explicit reasons and statements regarding why your proposed approach is promising to meeting the funder's program goals.
- Recruit the right team: include appropriate collaborations and/or shared mentorship if it benefits the project.
- Include relevant preliminary data, mention sample sizes and statistics, and proactively identify any potential pitfalls while including contingency plans.
- Be concise and clear, avoiding jargon and abbreviations while making it easy to read.
- Seek feedback (internally, externally, and across disciplines)
- Be realistic (in timeline, budgets, methodologies, etc.)





# Common Pitfalls to Avoid

---

- Unclear impact/significance or link between problem & proposed methodology
- Concerns regarding budget, funding overlaps, and overall feasibility of plans
- Issues related to sample size, statistics, or interdependent or exploratory aims
- Lack of sufficient subject matter expertise among proposed team/collaborators
- Poor grantsmanship: jargon, abbreviations, no clear hypothesis
- Depending on career level: lack of either a detailed and personalized mentoring plan or clear evidence of required independence
- Depending on funder: lack of clarity around relevance of publication record, contribution to career development/training, satisfactory patient/population engagement, and/or statement regarding health equity



# Reducing Application Stress

---

1. Carefully review the full eligibility guidelines and review criteria *before* starting your application
2. Line up recommenders – *some applications CANNOT be submitted until AFTER confidential letters have been received*
3. Allow time to submit your application – most times the entire process is online and there are multiple files to upload
4. Be sure to double check all components and complete submissions well in advance of posted deadlines



*Questions?*