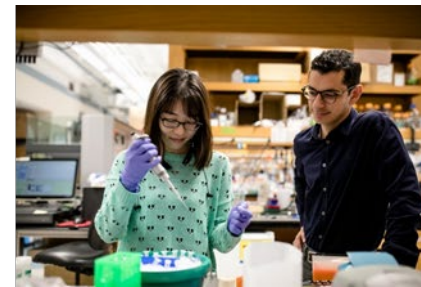
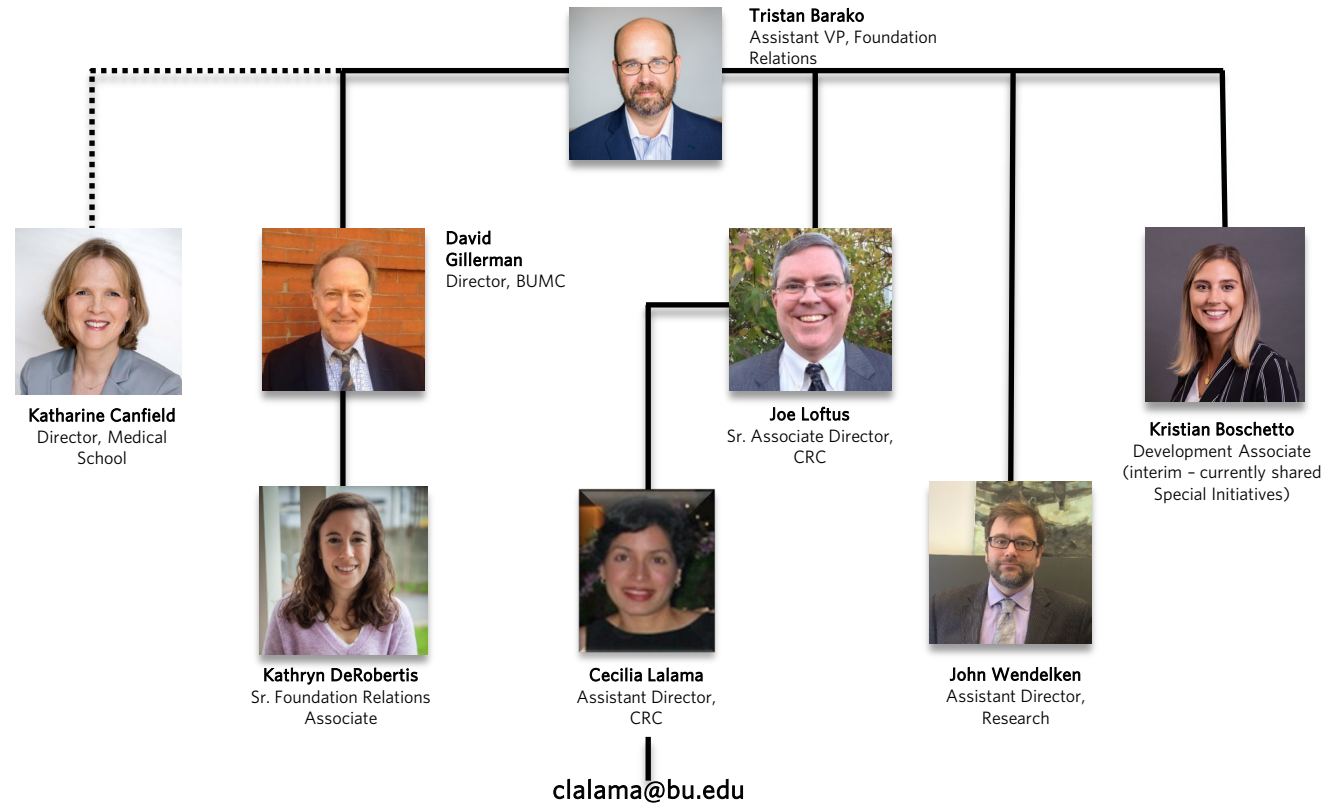


# Finding Funding in the Social Sciences: Meet the Russell Sage Foundation

BU Office of Research & Foundation Relations Workshop

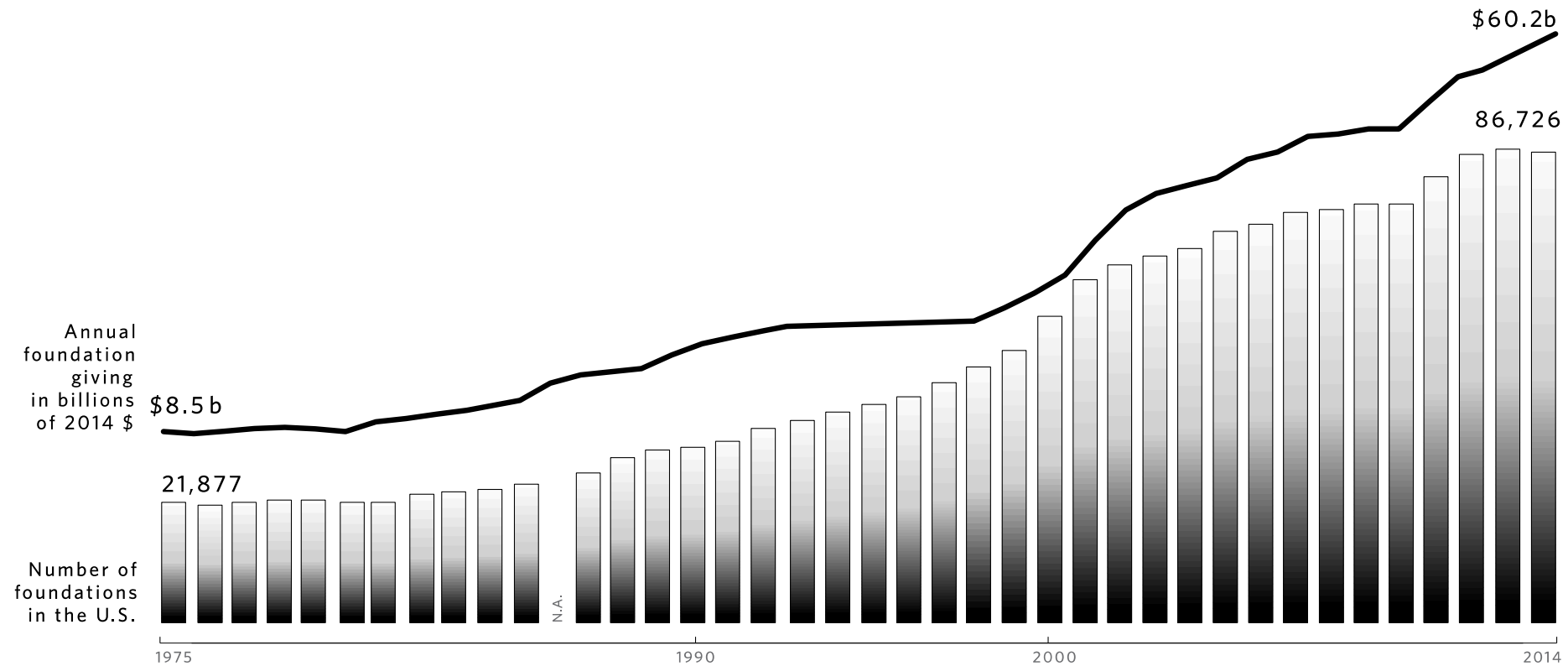


# Foundation Relations team

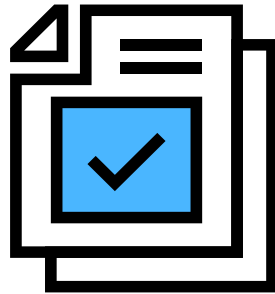




# Foundation Funding trends



# What Foundation Relations does



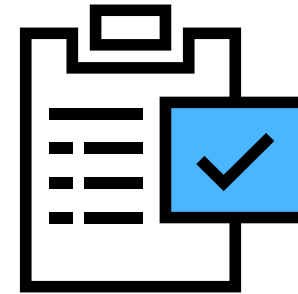
## **Identification:**

targeted RFP distribution;  
early career roadmaps



## **Cultivation:**

leverage alumni  
connections; info sessions  
w/ funders



## **Solicitation:**

drafting/editing/  
reviewing; peripheral  
components;  
proposal library

[www.bu.edu/foundations/](http://www.bu.edu/foundations/)



## Proposal Library

Home

+ New ▾ ⚙ Page details

Recycle bin

Edit

We have compiled a library of successful proposals submitted by BU faculty members to external funders. These proposals are available to members of BU's research community to provide insight and ideas regarding level of content, structure, language style, and format for grant-seekers. ***These proposals are for reference only and should not be distributed beyond the BU community.***

### Looking for further assistance?

- For foundation funding, contact [Foundation Relations](#).
- For federal funding, contact [Federal Relations](#).

Documents > Private Foundations

[See all](#)

+ New ▾ ↶ Upload ▾ 📄 Edit in grid view ➦ Share 🔗 Copy link ⋮ ≡ All Documents ▾ ⓘ

📄 Name ▾

- 📁 Alfred P. Sloan Foundation
- 📁 Andrew W. Mellon Foundation
- 📁 Brain & Behavior Research Found...
- 📁 BrightFocus Foundation
- 📁 Craig H. Neilson Foundation
- 📁 Cure Alzheimer's Fund
- 📁 Doris Duke Charitable Foundation

**Contact:**  
**Tristan Barako**  
**[tbarako@bu.edu](mailto:tbarako@bu.edu)**

<https://bushare.sharepoint.com/sites/Proposal-Library>



# RUSSELL SAGE FOUNDATION

Program Priorities & Grant Application Process

[russellsage.org](https://russellsage.org)

**Stephen Glauser**

Program Officer

[stephen.Glauser@rsage.org](mailto:stephen.Glauser@rsage.org)

April 7, 2021



RUSSELL SAGE FOUNDATION

# Who We Are

**“For the improvement of social and living conditions in the United States”**

From the Letter of the Gift by Margaret Olivia Sage establishing the Russell Sage Foundation, April 19, 1907

## **Then (1907-1944)**

A source of institutional support, and information for private social agencies on topics like poverty reduction, social work, city planning, labor reform, housing, public health, education, consumer credit, and industrial relations.

## **Now (1945-Present)**

RSF funds basic social science research; strengthening the methods, data, and theoretical core of the social sciences as a means of better documenting and understanding the nation’s most pressing social, political and economic problems.



# RUSSELL SAGE FOUNDATION

## RSF Funding Priorities

### Program Areas

- Behavioral Economics
- Future of Work
- Race, Ethnicity, and Immigration
- Social, Political, and Economic Inequality

### Special Initiatives

- Decision Making and Human Behavior in Context
- Immigration and Immigrant Integration (with the Carnegie Corporation)

***RSF: The Russell Sage Foundation Journal of the Social Sciences***



RUSSELL SAGE FOUNDATION

# Other Funding Mechanisms and Eligibility

## Visiting Fellowships (for scholars 3+ years beyond the PhD)

- Visiting Scholars (**deadline June 24, 2021 for residence in 2022-23**),
- Visiting Researchers and Journalists (**full for 2021-22, next deadline May 2022**)

## Pipeline Grants Competition (tenure track Assistant profs, some Associate profs, never had RSF support)

- Has its own RFP, but related to our program areas (**deadline TBA, but in the Fall**)

## Small Grants (PhD students, post-docs, untenured faculty no more than two years beyond PhD)

- Behavioral Economics (up to \$8,500; **rolling deadline**)

## Summer Institutes (for PhD students, Post-docs, Early-career faculty) (**Jan/Feb, 2021**)

- Behavioral Economics, Computational Social Science, Migration Research Methods, Proposal Development, Social Science Genomics, Biological Approaches to Social Science, Social Science for Journalists

Up-to-date deadlines are available on our website: <https://www.russellsage.org/how-to-apply/application-deadlines>

There are no restrictions based on citizenship, country of study, or country of employment.



RUSSELL SAGE FOUNDATION

# Research Grants: May 4<sup>th</sup> Deadline

For the upcoming May 4<sup>th</sup> deadline, RSF will only consider letters of inquiry (LOIs) under the following program areas and special initiatives:

- **Behavioral Economics**
- **Decision Making & Human Behavior in Context**
- **Future of Work**
- **Social, Political, and Economic Inequality**

Still interested in research in other program areas on the non-health outcomes of the Covid-19 pandemic and the resulting recession in the US; or research focused on systemic racial inequality and/or the recent mass protests in the US.

Funding decisions will be made at the November 2021 Board of Trustees meeting, with an earliest grant start date of December 2021. Visit <https://www.russellsage.org/programs> for the program specific RFPs and recent grants.



RUSSELL SAGE FOUNDATION

# Research Grant Application and Review

## Letter of Inquiry (LOI)

- Deadlines 3x/year; typically May/August/November
- Internal review\*
- External peer review\*

## Invitation to Submit Full Proposal

- External peer review\*
- Response to reviewer comments requested\*
- Review by RSF Advisory Committee\*

## Board or Presidential Approval

\*Progress conditional on positive reviews from RSF staff, external reviewers, advisory committees and Trustees



# RUSSELL SAGE FOUNDATION

## Reviewers and Their Role

### **RSF Program Staff**

- Internally screen the initial LOIs
- Assess fit with RSF programs, priorities, and submission guidelines

### **External Reviewers**

- Interdisciplinary - generally a mix of econ, psych, polisci, soc, etc.
- Chosen specifically for their knowledge of the topic or methodology

### **RSF Advisory Committees**

- Standing committee of interdisciplinary experts recruited by program area
- Decide which proposals are moved forward for funding consideration

### **RSF Board of Trustees**

- RSF Board serves as the final decision-maker on all proposals over \$50,000



RUSSELL SAGE FOUNDATION

# What We Ask Our Reviewers

**Reviewers are asked to answer 5 questions at the proposal stage:**

- Are the main questions important and compelling? Are the questions/hypotheses clearly stated and appropriately supported in terms of prior theory and empirical work?
- Are the proposed research design, data, and methods appropriate to address the questions raised? Is there sufficient power?
- Do the qualifications of the investigator(s) suggest the capacity to carry out the project?
- What is the likely contribution of the project?
- Do you have anything else to add that you think would help strengthen or improve the project?



RUSSELL SAGE FOUNDATION

# Declined at the Initial Screen?

## Not an RSF Funding Priority

- Project not focused on the US or outcomes are not a priority
- Routine analysis of existing publicly available data (GSS, PSID, ACS, CPS, etc.)
- RSF doesn't fund operational support, program evals, animal studies, etc.

## Project is too Preliminary

- Expensive data collection vs. data analysis
- Demonstrate project feasibility w/ pilot data (see Pipeline Grants)

## Fundamentals

- Lack of clarity, design flaws (e.g., data/methods not suited for research ?).
- RSF prioritizes research projects with strong descriptive or causal designs.



# RUSSELL SAGE FOUNDATION

## Tips & Suggestions

- Make sure the project is a fit with the Foundation's funding priorities
- The QUESTION drives the proposal: map the research design, data and methods tightly to the research questions
- Balance the proposal narrative (don't give us 2 pages of investigator qualifications)
- Provide sufficient information for reviewers to evaluate the appropriateness of methods
- Don't overpromise or exaggerate what the project will do – for example, don't use causal language if you don't have a causal design
- Show understanding of the strengths and limitations of the design, methods, analyses
- If asked, respond to reviews seriously, graciously, and in-depth
- Check Website, FAQs and review RSF guidelines, deadlines
- Submit on time – register for RSF's Fluxx portal **>48hrs in advance**

We receive many more very good proposals than we can fund - learn from reviews and try again if you have a project that you think fits.



# RUSSELL SAGE FOUNDATION

## Budget Guidelines

- Full budget not needed at the LOI stage.
- PIs with salary of up to \$250,000 may request summer salary support of up to \$12,500 for a 1-year grant, and \$25,000 for a 2-year grant.
- Course buy-outs considered on a case-by-case basis, allowed for Pipeline Grants
- Student research assistance allowed, but tuition costs are not.
- Crowdsourced workers (e.g. via Mturk) must be paid minimum wage, or \$10/hr, whichever is higher.
- Travel for dissemination or conferences not allowed for non-Pipeline Grants, limited travel for data collection is allowed.
- More can be found at: <https://www.russellsage.org/how-to-apply/apply-project-grants/budget>



RUSSELL SAGE FOUNDATION

# Thank You!

**WEBSITE:**

[www.russellsage.org](http://www.russellsage.org)

**EMAIL US:**

[programs@rsage.org](mailto:programs@rsage.org)

Sign up for our mailing list to keep abreast of funding announcements, publications or new work in progress. Select “Join Our Mailing List” at the top of our homepage.

# Questions?



[www.bu.edu/research](http://www.bu.edu/research)  
[www.bu.edu/foundations](http://www.bu.edu/foundations)