

## Study Aim

Our goal in this study is to understand family's experiences in order to eventually develop programs to better support families who members are receiving ECT. We would like to express our gratitude for participation in such an important, but sensitive, domain of study.



This study is being conducted by Boston University's Family Development & Treatment Lab

\*For more information, contact the Family Development and Treatment lab at [familytx@bu.edu](mailto:familytx@bu.edu)\*

**Boston University** - Charles River Campus  
Institutional Review Board  
Approved: April 17, 2019



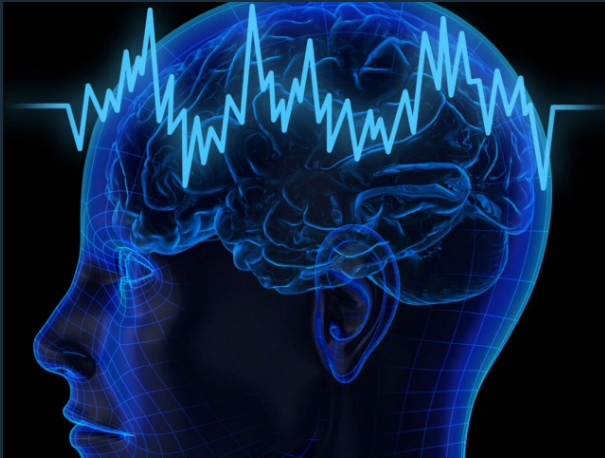
## ECT Family Experience Survey



A research study to assess the attitudes of Electroconvulsive Therapy patient's family members

## Do you have a family member who has had ECT?

- ◆ We would like to hear about your experience
- ◆ Participants must be over the age of 18



## Study procedure

- ◆ Participants will be interviewed about their experiences and fill out some brief questionnaires
- ◆ Any information about ECT is welcomed and will help our understanding of the subject

## Compensation

- ◆ You will receive your choice of a \$25 target or amazon gift card for your participation

**Boston University** - Charles River Campus  
Institutional Review Board  
Approved: April 17, 2019

## Time Commitment

The interview will take approximately one hour



## Study Location

Interviews will take place at 900 Commonwealth Ave, Boston, MA 02215 or at a location convenient for you