

SEXUAL MISCONDUCT RESOURCES Guide

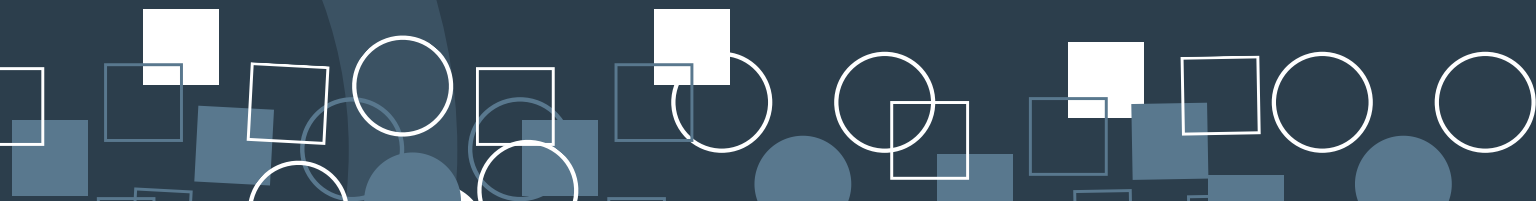


BOSTON
UNIVERSITY

BU Supports

Boston University is committed to fostering an environment free from sexual misconduct, sex or gender based harassment, and discrimination. The University strives for every community member to be informed and empowered.

This guide is intended to help BU's community members understand their resources and options. We encourage individuals to seek help from trained University staff or community-based resources should they need assistance.



EQUAL OPPORTUNITY OFFICE

Mission and Values

Our office is committed to encouraging and maintaining respectful dialogues with colleagues both inside our office and with our external campus partners.

We honor our colleagues and community members as people with different lived experiences, and approach difficult conversations with transparency and kindness.

We collaborate with the intention to ensure all voices are heard, and our work is a reflection of both our team and community's vast expertise and wonderful diversity.

Our office is fueled by integrity and neutrality - we know that without a clear ethical commitment to our work, then we lose our standing in the community.

We are a resource to our employees and students, and we are committed to providing the highest level of support to all Respondents, Complainants, students, employees, and managers.



Sincerely,

The EOO Team

Contents

I. UNIVERSITY RESOURCES	5
Student resources	
Employee resources	
II. COMMUNITY RESOURCES	10
III. MEDICAL CARE AFTER AN INCIDENT	14
IV. REPORTING OPTIONS	17
V. FROM BYSTANDER TO UPSTANDER	18
VI. CAMPUS SAFETY TIPS	19



BOSTON UNIVERSITY

Resources Defined



PRIVATE

A private resource is required to report any potential misconduct to the University Title IX Team. They will keep your information as private as possible, only sharing it on a need-to-know basis.



CONFIDENTIAL

These resources will keep all conversations confidential to the fullest extent permissible by law, and are not required to disclose information to the University Title IX Team.



MANDATED REPORTER

A mandated reporter is a person who is required to report observed or suspected abuse. Please be aware that any information revealed to mandated reporters will be brought to the attention of necessary offices such as the Equal Opportunity Office or the Office of Judicial Affairs.



SUPPORTIVE RESOURCE/MANDATED REPORTER

Information disclosed to these services is treated with sensitivity and discretion on a purely "need to know" basis - their main goal is to be a support for the BU community. They are considered mandated reporters.

STUDENT

Resources @ BU

Judicial Affairs

617-358-0700 | bu.edu/dos/ja

Judicial Affairs investigates potential violations of the Sexual Misconduct Policy by students, manages student conduct cases, and is the primary administrator of the Code of Student Responsibilities. The Code is a body of principles consisting of the University's expectations of its students, provisions for sanctioning rule violations, and due process mechanisms. It presupposes that students will obey all local, state, and federal laws; comply with all University policies and procedures; and respect the rights of all individuals.

Dean of Students

617-353-4126 | bu.edu/dos

The Dean of Students Office employs compassionate and experienced professionals who are focused on sustaining a community where all students can thrive and reach their full potential. During students' time at BU, they may encounter challenges that complicate that journey. The Dean of Students invites all students to utilize their caring staff to connect students with resources.



STUDENT Resources @ BU

Student Health Services

617-353-3575 | bu.edu/shs



SHS is an integrated health center that offers high-quality integrated clinical services and prevention strategies specific to our college population, and engages educational services and advocacy.

Behavioral Medicine

617-353-3569 | bu.edu/shs/behavioral-medicine



Behavioral Medicine offers a range of mental health services to keep the BU student community healthy by providing assessment, diagnosis and therapy, and psychiatry for a variety of mental health issues.

The Center for Psychiatric Rehabilitation

617-353-3549 | cpr.bu.edu



The Center for Psychiatric Rehabilitation is dedicated to improving the lives of persons who have psychiatric disabilities, free of charge. The center specializes in wellness, recovery, support, and advocacy for student respondents.

Sexual Assault Response & Prevention Center (SARP)



617-353-7277 | bu.edu/shs/sarp

SARP provides free counseling and advocacy to students who have experienced trauma. SARP compassionately responds to survivors of trauma and prevents interpersonal violence through awareness and education. SARP also offers a collective of support groups and educational resources.



Resources @ BU

Disability & Access Services



617-353-3658 | access@bu.edu

Provides Deaf and Hard of Hearing Services, as well as assistance and accommodations for Blindness and Low Vision, Learning and Attentional Disabilities, Physical Disabilities, and Psychological Disabilities. In addition to providing academic accommodations, DAS can also help you access any necessary housing or dietary accommodations.

The Howard Thurman Center



617-353-4745 | thurman@bu.edu

In the spirit of Dr. Thurman, the HTC provides a space for students to ask and be asked difficult questions about who they are and how they fit in the world. The HTC is a source of cultural programs, events, and experiences that foster critical thought, encourage new connections, and provoke conversation on the issues of the day.

University Service Center



617-358-1818 | usc@bu.edu

USC is a great place to visit or call when you have a problem or concern and aren't sure where to go. Staff can get you pointed in the right direction, or—if your concern is complex, multilayered, or involves multiple offices—help you figure out the best way to address the situation. Think of us like Apple Maps—we offer you directions, guides to the best resources, and give you a good sense of where things are.

The Newbury Center



617-353-3400 | newburycenter@bu.edu

TNC offers programming and services designed to ensure that first-generation students experience the same sense of wellbeing, belonging, self-efficacy, and academic accomplishment as their continuing-generation peers.



Resources @ BU

Faculty & Staff Assistance Office



617-353-5381 | bu.edu/fsao

FSAO provides free and confidential support, problem-solving, or coaching to address work and personal challenges for BU employees or their families.

LGBTQIA+ Center for Faculty & Staff



617-353-3990 | lgbtqia@bu.edu

The Center not only aims to support the University's mission of fostering an inclusive and equitable workplace, but to elevate it through opportunities for professional development and scholarship collaboration, resources, networking, training, and allyship.

Equal Opportunity Office



617-358-1796 | eoo@bu.edu

EOO works to promote and support Boston University's commitment to provide equitable access for all employees. We strive to ensure that equal opportunity is a reality at Boston University, and that our faculty, staff, and students can work and study in an environment free from unlawful harassment and discrimination. The office also ensures employees can access reasonable accommodations within their work environment, and the University meets its obligations under applicable federal and state laws.



COMMUNITY

Resources @ BU

Confidential Resource Providers (CRP)



This is a free resource for any BU community member.

CRPs can provide information about:

- The reporting options and the effects of each option
- Counseling services available on campus and through local community-based rape crisis or domestic violence centers
- Medical and health services available on and off campus
- Available school- or work-based supportive measures related to academic and residence life, and employment
- BU's disciplinary process
- How the legal process is carried out through local law enforcement agencies
- Notifying the reporting party of their rights and BU's responsibilities in obtaining a criminal protection order, BU No Contact Directive, BU No Trespass Order, and other lawful orders from law enforcement



Denita Johnson | denita@bu.edu
Assistant Dean for Field Education



Sonia Mee | smee@bu.edu
Assistant Director, Online Programs



Jennifer M. Gómez, Ph.D. | gomezjm@bu.edu
Assistant Professor, School of Social Work
(Complainants Only)



COMMUNITY

Resources @ BU

The Danielsen Institute

617-353-3047 | bu.edu/danielsen

The mission of the DI is to alleviate suffering and to promote healing, growth, and change in the persons, communities, and institutions that it serves. The institute seeks to accomplish this mission through service, training, teaching, and research which emphasizes depth psychotherapy and is informed by spiritual, religious, and existential perspectives.

Office of the Ombuds

617-358-5960 | bu.edu/ombuds

The OO provides assistance in resolving problems and conflicts. It is an independent, impartial, informal and confidential resource available to all members of the Boston University Community.

University Chaplains

617-353-3560 | chapel@bu.edu

The University Chaplains and Campus Ministers at Boston University are available for spiritual and pastoral conversation, as needed and requested by faculty, staff, administrators and students. All of our religious leaders are committed to providing pastoral care, spiritual guidance, personal help, religious inquiry, and other sorts of discussion.



COMMUNITY

Resources @ BU

Boston University Police Department



617-353-2121 | bu.edu/police

BUPD is a full-time, professional law enforcement agency that also provides a wide variety of public services, including emergency medical assistance, and responds to and investigates criminal matters. Patrols are conducted throughout the Boston University area 24 hours a day and span an area that includes over 132 acres of University-owned property and surrounding streets. BUPD can issue no-trespass orders to non-affiliates.

If you need immediate assistance or want to report a crime or emergency, you can use any campus phone and dial 3-2121 to reach BUPD.

Contact the anonymous tipline by texting 847-411 or by phone at 617-353-6516. The Detective Bureau can be contacted by phone at 617-353-3436.

Throughout campus, there are many blue emergency call boxes. They have a red button inside that will automatically connect you to the Police Department.



BUPD can also help you obtain an Abuse Prevention Order (209A) or a Harassment Prevention Order (258E). Please know violating a Court-Issued Protective Order is a criminal offense. Only a judge can grant, change, or deny a request.

Have You Obtained an Order?

BUPD will keep any information shared as private as possible, but they require notice of the order to ensure that the individual and community are kept safe. They can also be contacted for individual safety planning needs.



OFF-CAMPUS COMMUNITY Resources

13

CRISIS HOTLINES

National Sexual Assault Hotline | 800-656-4673



RAINN | 800-656-HOPE



National Domestic Violence Hotline | 800-799-7233



SafeLink MA Domestic Violence Hotline | 877-785-2020



Network La Red LGBTQ+ Hotline | 800-832-1901



- OFFERS MULTIPLE LANGUAGES
- OFFERS LEGAL SERVICES
- ADA ACCESSIBLE
- OFFERS LGBTQIA+ SPECIALTY SERVICES

LOCAL RESOURCES

Boston Area Rape Crisis Center (BARCC) | 800-841-8371



Casa MYRNA Domestic Violence Agency | 877-785-2020



Network La Red | LGBTQ Domestic Violence Agency | 800-832-1901



Asian Task Force Against Domestic Violence | 617-338-2355



Saheli (South Asian and Arab women) | 866-472-4354



Victim Rights Law Center | 617-399-6720, ext. 19



MEDICAL CARE

Following an Incident

Boston University recognizes the emotional, physical and mental strain that experiencing an act of sexual violence or assault can have on an individual.

Seeking medical care is strongly recommended to ensure patient safety and wellbeing. The most common practice post-incident is called a SANE (Sexual Assault Nurse Examination). The emergency room visit and SANE exam are free; students do not need to use their insurance.

These examinations are conducted by a SAFE (Sexual Assault Forensic Examiner), a specially trained and certified professional who will provide needed care, document the details of the assault, and collect evidence.

A SANE is recommended to screen for and prevent sexually transmitted infections, diseases, and pregnancy exposure.

Students can access medical care through BU's Student Health Services.

Employees and other BU community members are encouraged to access the Boston community resources seen on the following page, or connect with a regional hospital who is able to provide care for violence-related injuries.

SANE Guidelines and Timelines

- A SANE must be given within 5 days or 120 hours of the assault.
- If you suspect you were given any type of drug, you should seek medical care within hours or days to be able to obtain laboratory diagnostics.
- Emergency contraception to prevent pregnancy must be given within 72 hours.
- HIV emergency post-exposure prophylaxis (PEP) should be started as soon as possible for maximum effectiveness and must be started within 72 hours of the potential exposure.
- To locate a SANE nurse, visit the Boston Region Designated Hospitals website at: mass.gov/ma-sexual-assault-nurse-examiner-sane-program.

MEDICAL CARE

Following an Incident

Quick Tips:

- Try not to bathe until you can access a medical center
- Keep clothing on or store clothing in linens (not a plastic bag). The hospital will keep the clothes as evidence. If you have changed clothes, bring the ones you were wearing during the incident to the hospital.
- Typically, the hospital staff will call the police to the hospital to take custody of the forensic kit. The individual can choose whether they wish to speak with the police or file a criminal complaint.
- Write down any details about the incident (who, what, where, and when.)
- Save any social media posts or electronic conversations, written communication, audio or video recordings, photos, receipts, call logs, or any other relevant information.

We Can Do This Together

Students can contact SARP for support in accessing safe medical care. (SARP does not accompany students to the emergency room.) Call SARP's 24-hour/7 days a week crisis response line at 617-353-SARP (7277). After 5:00 pm or on a weekend/holiday, callers will receive a message saying they have reached SARP; the office is closed, listen for a pause followed by instructions to press 1 to leave a non-urgent voicemail or 2 to speak with the Crisis Counselor on call.

Employees and other BU community members can call BARCC (Boston Area Rape Crisis Center) for support and accompaniment to the emergency room. Individuals can access support by calling the hotline at 800-841-8371.

OFF-CAMPUS

Medical Resources

Boston Area Hospitals

Beth Israel Deaconess Medical Center
 Center for Violence Prevention & Recovery
 617-667-8141



Boston Medical Center
 Community Violence Response Team
 617-414-8030



Brigham and Women's Hospital
 Violence Intervention & Prevention
 617-264-8750



Massachusetts General Hospital
 Haven Clinic
 877-785-2020



Mt. Auburn Hospital
 617-492-3500



St Elizabeth's Medical Center
 617-789-3000



-  SANE-DESIGNATED HOSPITAL
-  OFFERS MENTAL HEALTH SERVICES
-  OFFERS GENDER AFFIRMING SERVICES
-  SUBSTANCE ABUSE SERVICES
-  INTIMATE WELLNESS SERVICES



Reporting Options

DON'T FORGET:
THE DECISION TO REPORT
IS YOURS - YOU ALWAYS
HAVE A CHOICE

DECISION TO REPORT

REPORT TO THE UNIVERSITY

Individuals may choose to report using the Incident Report Form found on the EOO website. If you decide to meet with EOO or OJA, they can explain the process for resolution.

CONTACT LAW ENFORCEMENT

Individuals may report to BUPD or the law enforcement agency located where the alleged conduct occurred. If you report to the police, you are not required to proceed with the case. You can change your mind at any time. The statute of limitations on rape in Massachusetts is 15 years.

SUPPORTIVE MEASURES

Individualized services are meant to restore or preserve access to the University, protect students and employees, or deter sexual harassment. Services are provided before and after filing a formal complaint or when no formal complaint is filed.

EXAMPLES OF SUPPORTIVE MEASURES WE CAN PROVIDE

- Academic support or course/program related adjustments
- Altering transportation, work or campus housing arrangements
- Implementing or requesting No Contact Orders
- Safety planning
- Visa or immigration assistance

You can also obtain supportive measures at a BU confidential resource, like SARP or CPR.

FORMAL PROCESS

The University will investigate the allegation and adjudicate the allegation using the evidentiary standard by the preponderance of the evidence.

INFORMAL PROCESS

Individuals may agree to resolve concerns with the assistance of a neutral facilitator (except in cases involving allegations of Title IX Sexual Misconduct by a student against a University employee, or sexual violence).



FROM Bystander TO Upstander

BU strongly encourages its community members to be upstanders: individuals who take action in defense of those who are targeted for systematic or individual harm or injustice by interrupting and challenging situations that normalize discrimination and potential violence.



Start with the 4 D's of intervention:



DIRECT

Ask: "Are you OK?"

Identify what's inappropriate in the "harm doer's" behavior.



DISTRACT

Change the topic. Create a distraction.
Change activity or location.



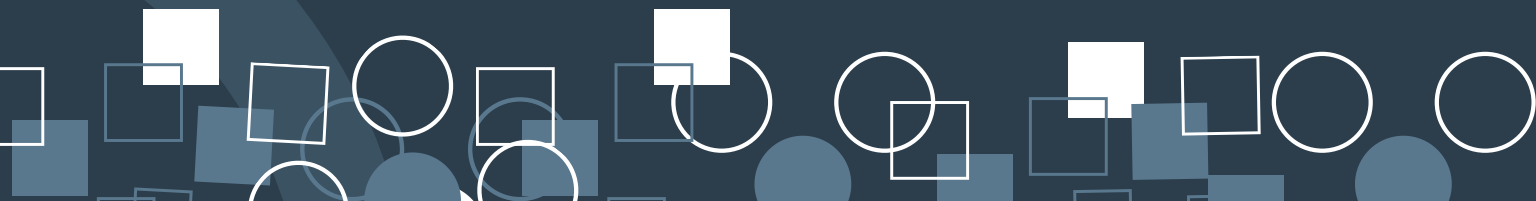
DELEGATE

Ask others to help intervene.

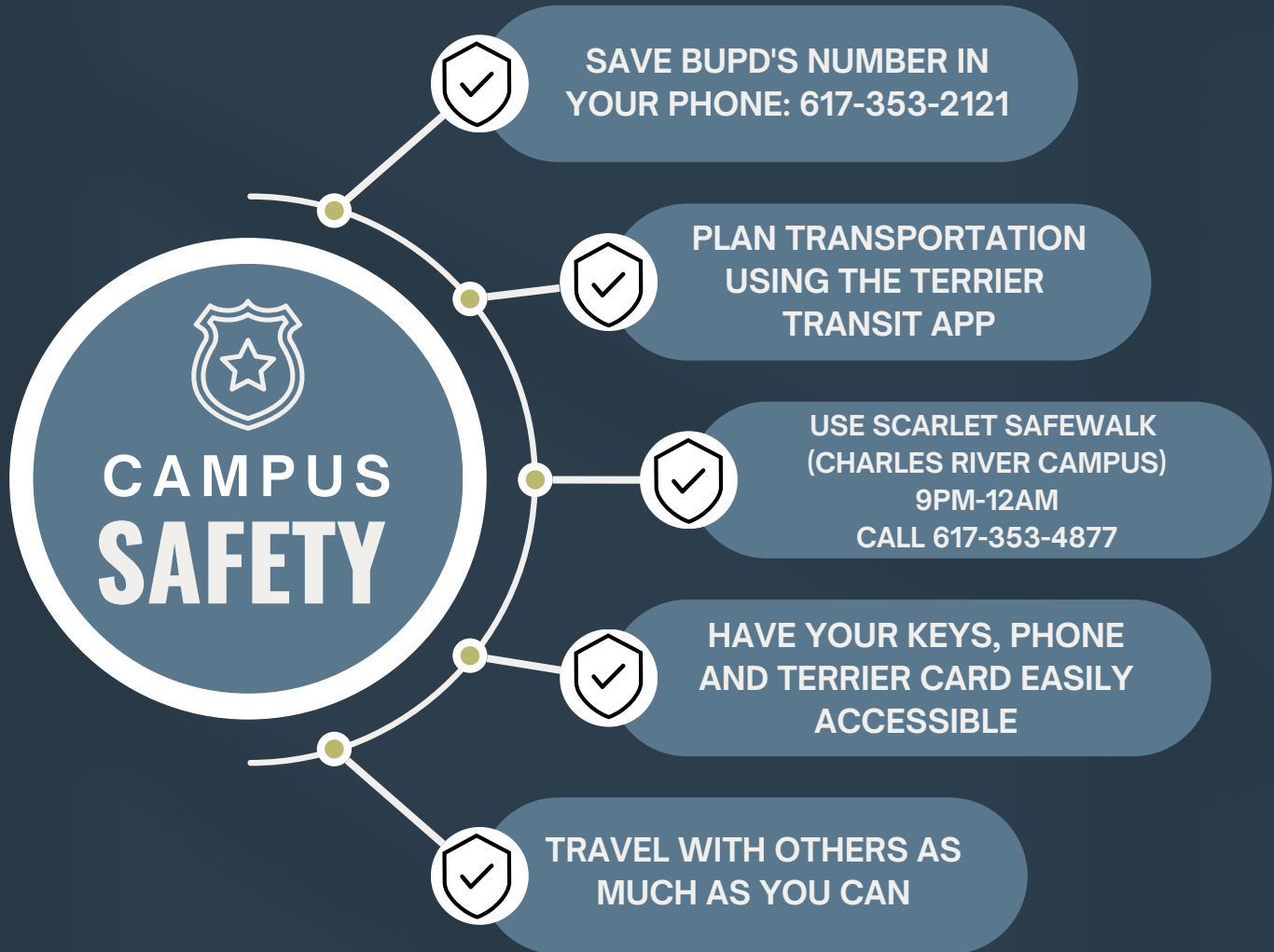


DELAY

After an incident, ask colleagues how you can support them if they've experienced harassment.



CAMPUS SAFETY TIPS @ BU



QUESTIONS?

Contact EOO



617-358-1796



eoo@bu.edu



888 Commonwealth Ave Suite 303

