

**BREAKING
DOWN BARRIERS**



FOR A BETTER BU

BREAKTHROUGH BU PLATFORM

**STUDENT
GOVERNMENT
EXECUTIVE BOARD
2024-2025**

TABLE *of* CONTENTS

BREAKING BARRIERS FOR A BETTER BU

LETTER FROM THE SLATE	01
SLATE INTRODUCTIONS	02
WHY BREAKTHROUGH?.....	05
AMPLIFY.....	06
CULTURE.....	09
TRANSPARENCY.....	14
CLOSING NOTE.....	16



BREAKING BARRIERS FOR A BETTER BU

A LETTER *from the* SLATE

Dear Boston University Student Body,

We are so grateful for the chance to present our platform to you and are so excited at the potential of being your future Student Government Executive Board.

While we recognize that the independent culture of BU is what makes us unique, we also recognize that this has become an obstacle to our unity as Boston University Terriers. We proudly represent different communities that align with our identities and interests, making us even more passionate about creating a BU **EVERYONE** can call home.

Our experience not just within Student Government but our own lived experiences uniquely makes us equipped to make BU a stronger community. Our goal as a team is to break through barriers, invisible and physical, to unify our campus into one.

We're breaking through barriers to **amplify** the voices of the student body, to solidify a **culture** here that is inclusive and equitable, and to **strengthen** the connection between **OUR** leadership and **YOUR** needs as BU students.

We're breaking through barriers for a better BU.

yours truly,
breakthrough bu



MEET *the* SLATE



PRESIDENT KWAZI ANTWI

As President, nothing is more important to me than thoughtful representation of our diverse and talented student body. I believe that being as transparent as possible to our student groups in the best way represents your interests. This means directly engaging with students for feedback, regular updates on StuGov initiatives, and, most importantly, being present at student-run meetings and events. At a huge university like ours and in a major city like Boston, the challenges often seem overwhelming. Together, as a strong, diverse, and united student union, no barrier is too large to break through.

Involvements: BU Ghanaian Student Organization, African Studies Center, Tri-Alpha Honors Society, Former BU StuGov Unity & Social Quality Initiative Senator, Build@BU Innovator, Model for BU Buzz, Legal Intern



VICE PRESIDENT MADDIE ARIOLA

As your Vice President, I'm committed to being a voice for the BU student body and a resource for students seeking support and guidance. As a transfer student, I understand how overwhelming BU can be. I want to use my unique insight as a transfer student and the experience I've gained working directly with students and administration to break barriers and enact change toward a welcoming, equitable, and inclusive BU that current and future Terriers deserve.

Involvements: BU StuGov, BU Filipino Student Association, Diversity in Law Association, FY101 Transfer Student Peer Mentor Sigma Delta Tau, Boston Political Review, Admissions Ambassador, Admissions Student Diversity Board, Former Superior Courts Intern

MEET *the* SLATE



VP OF FINANCE KIRSTEN SAINT-FORT

As your VP of Finance, I look forward to connecting with students from all corners of BU. Our student organizations are the backbone of BU, and I am excited to be the intermediary between our student organizations and their aspirations in community building. Building a strong relationship with groups on campus is one that will ensure that I will be able to give support where necessary, not just through funding but by being present as a recognizable face on campus.

Involvements: BU Student Government, Students of Caribbean Descent (SOCA), Alpha Delta Pi Co-Director of DEΘI, Phi Alpha Delta VP of DEΘI, Former member of CGS Dean's Student Advisory Board.



VP OF INTERNAL AFFAIRS I S A C A S A N O V A

As an international student who has lived in four different countries, my unique global perspective has led me to greatly value communication, cultural understanding, and the power of diverse voices in creating a vibrant community. My mission as your Vice President of Internal Affairs revolves around bridging the gaps between students from all walks of life, administration, and faculty. Let's break barriers and build bridges together to create a BU in which every student can thrive!

Involvements: Former BU StuGov Engagement, Leadership Specialist for Alpha Delta Pi, Brick By Brick Organization Mexico City, Alpha Delta Pi Philanthropy Committee

WHY BREAKTHROUGH?



BreakthroughBU champions diversity in ethnicity, beliefs, and backgrounds within our slate. However, we are unified under the same goal: to bridge the gap between students, their government, and University Administration. We will vigorously represent the well-being of our students, paying particular attention to the needs of our affinity groups and marginalized identities while working hard to ensure that student initiatives and organizations are prioritized and empowered to enrich the culture of our university.

As your elected Student Government Executive Board, we are committed to making effective and sustainable change. To accomplish this, we are committed to **ACT** on issues and initiatives to represent students like you.



AAMPLIFY
CCULTURE
TTRANSPARENCY

AMPLIFY

Breakthrough BU will amplify the voices of the student body.

With our diverse student body, we want to ensure **EVERY** voice is heard and provide the spotlight it deserves. Having open discussions with students and leaders of clubs or organizations whose communities represent marginalized communities to understand the needs of the student body is a priority for us.

YOUR perspective. **YOUR** opinion. **YOUR** voice will be at the forefront of all discussions we have with admin and within Student Government.



AMPLIFY

DIVERSITY

The Howard Thurman Center: We'll prioritize working directly with the HTC to ensure regular and effective facilitation of **cultural recognition and collaboration** among student groups.



Cross-Cultural Events: We'll support existing cross-cultural events hosted by clubs and introduce new initiatives to encourage dialogue among the diverse cultures on campus.

Affinity Mixers: We'll continue organizing events for leaders from various clubs and organizations, representing **different genders, sexualities, ethnicities, and cultures**. These events will focus on discussing diversity-related topics and gathering feedback to better amplify student voices in discussions with administration or faculty.

Collaboration with the Admission Students Diversity Board: We'll collaborate with ASDB to assess ways BU can **enhance admission processes** for students from diverse backgrounds. Additionally, we'll work to strengthen relations between **newly admitted diverse students** and the Student Government.

Multicultural Greek Council: We'll partner with MGC to support and expand Greek communities that proudly represent different cultures on campus.



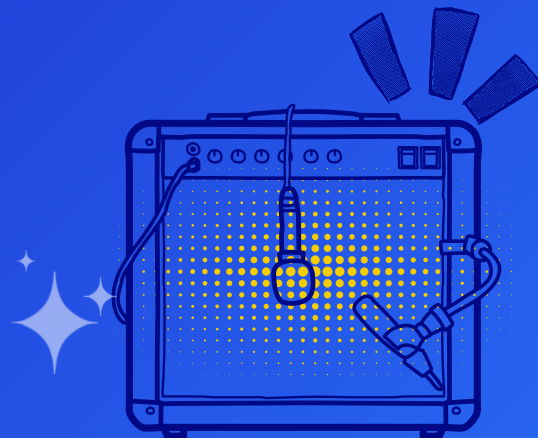
AMPLIFY

Improving Advising: We want to push for **student evaluations for academic and career advisors on campus**. Too often, students walk out of meetings with their advisors feeling unsatisfied with the guidance they've been given. Evaluations will ensure that students can easily access relevant resources and guidance from advising at BU

Collaboration with First-Gen/Low-Income Partnership (FLIP): We aim to increase support for first-gen students at BU

Celebrating Art at BU: Our slate believes that art and expression is such an integral part of BU student's lives. We aim to collaborate with **student magazines and organizations** to spotlight art made by our peers through showcases hosted by Student Government.

Clubs & Organizations: Clubs and organizations are where BU students can explore passions, get involved, and find community. We will collaborate with SAO, BUild Lab, and BU Spark! to encourage new ideas and support students in making new clubs, organizations, and programs come alive.



CULTURE

Breakthrough BU envisions a **shift in our school's culture towards a more welcoming, exciting, and inclusive environment.**

Through our initiatives, **Breakthrough BU** aims to enhance the overall student experience at BU, highlighting community and belonging. By fostering deeper connections among students, faculty, and the administration, we strive to **cultivate a culture** where every student can thrive. Here, our differences are not only recognized but celebrated as strengths.

As your elected representatives, we are committed to ensuring that your college experience transcends mere attendance; we want you to feel like you're **building a home away from home at BU**. Together, let's embark on this journey to transform our campus culture, creating a vibrant, inclusive community where all students can flourish.



CULTURE

We are committed to supporting students by working towards better accommodations, transportation, and recognition on campus.

- **Collaboration with clubs like the Disability Collective and Active Minds:** Accessibility is important to many students for many reasons. We want to raise awareness about accessibility issues on campus.

Collaborate with the Community Service Center: We aim to work with the Community Service Center to increase participation and awareness of initiatives aiming to better our BU community

Support Student Groups in City Initiatives: Many students have existing projects and initiatives to serve the City of Boston. We want to spread awareness about these projects and offer resources to support future initiatives.

With such a diverse student body and huge campus, it's difficult to feel a sense of unity as BU students. To encourage unity within our community, we will introduce interactive and engaging activities such as:

Spring Concert: We will continue to bring artists to BU

Challenges where students can participate to win prizes!

- ex. Attend a BU game for each sport and win Beanpot tickets

Watch parties for big sporting events

Competitions between schools and residence halls to increase pride amongst majors and dorms

Promote school sports through StuGov to encourage school pride and support our own BU athletes



TRIGGER WARNING

The next page of our platform contains sensitive content regarding sexual assault, domestic violence, and other types of abuse.

We are committed to empowerment and accountability when it comes to sexual assault, domestic abuse, or any type of violence. Breaking barriers through culture heavily emphasizes issues like sexual violence and we believe that all students have the right to a safe and secure environment.

While we feel these topics are pertinent to our platform, we understand that this content can be extremely upsetting to consume.

CULTURE

EMPOWERMENT

Supporting Survivor's Bill of Rights: We're pushing the administration to recognize and enforce a Survivor's Bill of Rights campus-wide. It's crucial that our Administration acknowledges students' struggles and commits to creating a safer campus.

Collaboration with 16,000 Strong Committee: We're joining forces with student organizations to host events that provide emotional support, spread awareness about sexual assault, and prevent it.

Promoting Safety Resources: We're partnering with Scarlet Safe Walk and SARP (Sexual Assault Response and Prevention) to prevent dangerous situations and ensure students know where to find support when they need it.

Greek Life: We're continuing our work with Greek life leaders to educate students, support victims, and prevent sexual assault and domestic violence within the Greek community

Climate Surveys and Meetings: We'll also be conducting climate surveys and holding meetings to gather feedback and keep the conversation going on how we can improve campus safety and support systems.



CULTURE

EMPOWERMENT

MENTAL HEALTH

Wellness Fairs, Giveaways, and Events: We will collaborate with BU Wellbeing and SHS to revamp **previous wellness fairs and events** offered to students and expand existing well-being projects

- Therapy Animal Events
- Kits for better sleep, de-stressing, self-care
- Mental Health workshops for affinity groups
- Weeks of Wellness



INTERNATIONAL STUDENTS

International Student Career Fair: A fair organized for international students will provide accessible resources and create a welcoming space to address questions and concerns

International Student Listening Circles:

Breakthrough BU understands the importance of emotional support for international students and aim to provide a space for international students to talk about their struggles.



TRANSPARENCY



Breakthrough BU brings valuable experience from previous student government roles, understanding the importance of transparency and communication in creating a community where students truly belong.

We're dedicated to crafting a student government that's more than just "decision-makers". We believe that transparency **builds trust** and **encourages active involvement** from our community. As such, our initiatives prioritize **clear and open communication** at every step.

Breakthrough BU aims for an environment where students are not just informed but also **empowered** to engage in conversations about their campus. We're committed to fostering **openness and accountability**, ensuring that every BU student feels connected, represented, and integral to the decision-making process.

TRANSPARENCY

Being Present: **Breakthrough BU** aims to set a new standard for what it means to serve the student body. We will invest more time in **being present at student-hosted events** to meet more students and better our understanding of the needs of the student body.

Regular Student Government Newsletters: Students will be able to sign up for the newsletter for **weekly updates** on senate meetings and cabinet departments in addition to **regular student body emails**

Collaboration with School Student Governments: We will work with school student governments to strengthen our connections with students of different majors

Social Media Presence:

- **Instagram Takeovers:** We will implement regular **Instagram Takeovers** to increase student engagement and transparency about what Student Government members do in their daily lives
- **Student Spotlights:** We will feature more about students and groups through spotlights and Instagram posts

Accessible Ways to Give Feedback and Suggest Ideas: We will offer students more accessible ways to contact us through **office hours, tabling, feedback forms, etc.**

JOIN US! LET'S BREAK BARRIERS TOGETHER FOR A BETTER BU

Vote Breakthrough BU

Follow us on Instagram: @breakthroughbu
Contact us at breakthroughbu2024@gmail.com

