



Hi Earth & Environment team!

We have a longer newsletter today, but a lot of exciting things happening!
Check out the information below for updates and events.

UPCOMING EVENTS & HAPPENINGS

MONDAY 07/24

11:00am - 1:00pm: [Virtual Resume and Cover Letter Review Drop-In](#)

The CCD offers personalized feedback for resumes and cover letters during Drop-Ins, no appointments needed. This summer we're going virtual! Don't forget to have your documents ready.

TUESDAY 07/25

12:00pm: [Dr. Meghan Cope on Geographies of Childhood](#)

What insights can be gained about the historical geographies of childhood from primary source material? What do maps—designed for or by children—reveal about the conditions, spaces, and places of childhood? Join the Boston Public Library with Meghan Cope for a virtual talk on the conditions and experiences of childhood in early 20th century New England.

This talk is presented in conjunction with the BPL ongoing exhibition, [Building Blocks: Boston Stories from Urban Atlases](#). It is free and open to the public. It will broadcast live to their [Facebook](#) and [YouTube](#).

WEDNESDAY 07/26

11:00am - 1:00pm: [Virtual Resume and Cover Letter Review Drop-In](#)

The CCD offers personalized feedback for resumes and cover letters during Drop-Ins, no appointments needed. This summer we're going virtual! Don't forget to have your documents ready

3:00pm: [Education Now | Building Diverse College Communities](#)

The implications of the Supreme Court's ruling against the use of affirmative action in college admissions are still emerging. But the underlying work — to increase access to college, foster a welcoming learning community on campus, and support successful outcomes — hasn't changed. In the wake of the Court's decision, we consider how the ruling may prompt new action and new approaches to building and sustaining diverse communities on college campuses across the country. We hear from specialists in college access and higher education, who share various perspectives on the implications of the ruling and what comes next.

Offered as a webinar.

THURSDAY 07/27

7:00pm: [Plight of North Atlantic Right Whale: New England Gem on the Edge of Extinction](#)

Krill Carson, founder and Director of the New England Coastal Wildlife Alliance (NECWA), will discuss the plight of the North Atlantic Right Whale, the most endangered baleen whale of the western North Atlantic, which numbers fewer than 350 individuals. Krill will describe the threats the whale faces from ship strikes, reductions in food supply, and entanglements in fishing gear, as well as actions people can take to ensure their safety. Virtual event, free and open to the public! RSVP [here](#).

7:00 - 9:00pm: [Climate Action: On + Off Screen](#)

Climate doom got you down? Want to take action, but don't know where to start? Well, we've got you covered! Join us for an inspiring film screening on the banks of the Charles River!

You'll see three films about local climate challenges—drought, pollution, and storm water—and learn what we're doing about it. Then, stick around for our Advocacy Action Half-Hour to learn about ways you can make a real difference for our rivers. Register [here](#).

FRIDAY 07/28

6:00pm: [Dialogue of Civilizations: Lost/Found](#)

Inspired and in anticipation of the arrival of [Little Amal](#) in Boston, Lost/Found is a collage of scenes and monologues written and created through Dialogue of Civilizations workshops led by A.R.T. Learning Lead Vahdat Yeganeh at [The Immigrant Learning Center](#). Our students/artists from Syria, Egypt, Morocco, China, Hong Kong, Thailand, Russia, Iran, Haiti, and the United States created Lost/Found by using theater skills based on body, mind, voice, and imagination to explore the concepts of home and belonging, and to practice the philosophy of Dialogue of Civilizations in performing arts. Join us to celebrate the culmination of ten weeks of Dialogue of Civilizations workshops and the excellent work of our new neighbors! [RSVP here](#).

SUNDAY 07/30

3:00pm: [Be The Change with Jane Hirschi, author of *We Garden Together*, and CitySprouts](#)

Written by the staff of [CitySprouts](#), a leading educational organization in promoting urban gardening and equitable access to nature, each activity—from Sorting Seeds to Going on a Worm Hunt to Planting a Tasty Salad—, *We The Garden* encourages kids to roll up their sleeves and learn about seeds, planting, and gardening. Step-by-step photos and on-the-page discovery prompts, presented in a lively design, make it easy and inviting for kids everywhere to become plant lovers and nature explorers.

Jane Hirschi is the founding director of CitySprouts, a nationally recognized program that provides early science and nature education in collaboration with 20 public schools in the greater Boston area. She is passionate about making sure that all children have opportunities for hands-on science education in the garden and the chance to get to know the natural surroundings in their own neighborhood.

MONDAY 07/31

11:00am - 1:00pm: [Virtual Resume and Cover Letter Review Drop-In](#)

The CCD offers personalized feedback for resumes and cover letters during Drop-Ins, no appointments needed. This summer we're going virtual! Don't forget to have your documents ready

WEDNESDAY 08/02

11:00am - 1:00pm: [Virtual Resume and Cover Letter Review Drop-In](#)

The CCD offers personalized feedback for resumes and cover letters during Drop-Ins, no appointments needed. This summer we're going virtual! Don't forget to have your documents ready

6:00pm: [Arnold Arboretum Tour: Invasive Species](#)

Invasive plants across the world threaten to take over ecosystems and choke out native plants, and the Arboretum is no exception to this struggle. Join Horticulturist Ryan Devlin to find out how staff are managing invasive plants here, learn what characteristics make a plant invasive, and start identifying the invasives you see all around you.

This program involves walking on paved roads and mulched paths. RSVP required and available [here](#).

6:30pm: [Virtual Book Club: 2040 Movie Discussion](#)

Prior to the meeting, the book club asks that you watch the documentary film "2040" on [Kanopy](#) - the library's online film resource - and then come to the meeting prepared to discuss.

"2040 is a documentary film directed by and starring Damon Gameau. The film looks at the effects of climate change over the next 20 years and what technologies that exist today can reverse the effects. Practical solutions to environmental concerns are addressed with the hope that the filmmaker's daughter, 21 years old in the year 2040, will face a hopeful future."

SUNDAY 08/06

2:00 - 6:00pm: [Grown Up Book Fair at Trillium Brewing!](#)

Remember getting the book fair flyers at school? Seeing if the next book in your favorite series was coming out, comparing lists with your friends, checking off the books you want, and planning how you'll totally convince your parents that yes, in fact, you definitely need all those books because don't they want you to get into a good college or whatever? And then the thrill when the books arrive and you see a pencil set you absolutely need and stickers for your trapper keeper and one of those friendship necklaces? Think you would never get to experience that rush again?

Join Porter Square Books on Sunday, August 6 from 2-6PM at [Trillium Brewing's Fort Point location](#) for a Grown Up Book Fair. The Grown Up Book Fair will have everything you love about school book fairs, plus beer!

ONGOING

[Arnold Arboretum: Guided Tours](#)

Now through July 30th

Join the Arnold Arboretum staff for a 90-minute walk through the grounds! Tour seasonal plant highlights and learn about Arboretum history from a trained docent.

Registration [required](#), group tours available!

[Arnold Arboretum: Art Show | Marsh Kaleidoscopes](#)

Now through October 8th

Marshes and wetlands are key to our entire ecosystem. They clean and filter water while providing habitat for numerous birds, amphibians, and insects. They are also visually exciting to walk through: their multiple layers of growth create patterns of reflecting leaves or bushes in every spot of water. Pamela Tarbell's "Marsh Kaleidoscope" painting series brings these kaleidoscopic wonders to the Arboretum in the form of colorful abstract paintings that highlight the beauty and value of these life-protecting, carbon-storing champions.

[Farmers' Markets - Boston Metro Area](#)

Now through September

Looking for fresh food this summer? Want to support your local growers? Check out this comprehensive list of farmers' markets in the Boston Metro Area.

SUMMER STUDENT SPOTLIGHT

Emma is a class of '25 Biology major, with a specialization in Behavioral Biology and a **minor in Earth and Environmental Sciences**. In May & June, she worked with the SEA Association to look at coral reefs along the Hawaiian Islands, including Oahu, Maui, the Big Island, and Kauai.

Using Neuston net and carousel deployments, she measured the chemical properties of the salt water, and worked with classmates to focus on how fish and invertebrate density are being affected by tourism. To investigate this, she conducted reef surveys that included using belt transects and fish and invertebrate classification. After compiling the data, Emma and the team found that, in areas where there is direct tourism (such as snorkeling), there was a lower abundance of organisms.

She is interested in continuing research in this field, focusing on how this could be a long-term trend.

Emma Francoeur



Xiaofei Qin



Xiaofei is currently a Ph.D. student, studying with Abigail Sullivan. When she was studying at the Center for Regional Agricultural and Rural Development, IGSNRR, CAS, Xiaofei worked as a survey conductor and consultant for the third-party assessment of targeted poverty alleviation in 22 provinces of China. Her previous research investigating urban environment, rural economic development and governance in China marks the beginning of her academic journey to environmental equity. **At Boston University, her research interests are collective action and equitable governing framework for climate change adaptation.** She is now exploring how underserved, vulnerable groups and neighborhoods cope with climate crises and designing collaborative governance institutions to support those disadvantaged and marginalized.

This summer, through an IGS Fellowship, she is conducting research on integrating environmental justice into US policies and action for urban heat island mitigation. In June, she presented this research on the annual meeting of the International Association for Society and Natural Resources (IASNR).

E&E IN THE NEWS

[Ph.D. Students Nia Bartolucci and Claudia Diezmartínez Peregrina Named 2023 Switzer Environmental Fellows](#)

[Twenty environmental scholars have been chosen as 2023 recipients of the Switzer Environmental Fellowship](#), a program of the Robert and Patricia Switzer Foundation that awards environmental leaders a \$17,000 cash award and leadership training to support their graduate studies and career development at 16 universities in New England and California.

The 20 fellowships total \$340,000 in awards. During their fellowship year, Switzer Fellows cultivate their personal leadership skills toward advancing social equity, build relationships and expand their networks through shared experiences with the 2023 cohort and the Switzer Network.

NIA BARTOLUCCI

PHD CANDIDATE
MARINE BIOGEOCHEMISTRY

Nia studies how climate change and other anthropogenic impacts are affecting the biogeochemistry and ecosystem function of coastal wetlands.



E&E IN THE NEWS

BOSTON COLLEGE Department of Earth & Environment

CLAUDIA DIEZMARTÍNEZ PEREGRINA

PHD CANDIDATE
EARTH & ENVIRONMENT

Claudia studies how cities across the United States are designing, financing, and implementing policies that serve not only to mitigate or adapt to climate change, but also to improve social justice in urban communities.



E&E IN THE NEWS

BOSTON COLLEGE Department of Earth & Environment



Professor Benjamin Sovacool Collaborates In Study Awarded \$1.1 Million to Investigate Impacts of Data Centers on Norway's Clean Energy Transition

As Norway strives to position itself as a hub for global digital infrastructure—building data centers for cloud storage and processing—questions about the benefits and tradeoffs of digitalization are being brought to the forefront of its sustainability policy.

Now, through a government-backed initiative, the [Research Council of Norway](#) has awarded more than \$1.1 million in funding to examine the role of digital transformation in Norway's shift to clean energy, with a focus on its growing data center industry. The study will evaluate the often-overlooked socioenvironmental impacts involved, such as energy competition, to inform public-sector policy decisions. Called the "Limits to Digitalization (L2D)," this effort is jointly led by researchers at BU and the Norwegian University of Science & Technology (NTNU).

Professor Sucharita Gopal Publishes on Opioid Mortality, Uses Spatial Durbin Panel Data Model

Dr. Gopal recently published an article entitled, [Opioid mortality in the US: quantifying the direct and indirect impact of sociodemographic and socioeconomic factors](#).

Her paper emphasizes the importance of employing a spatial Durbin panel data model for quantifying the impact of a set of explanatory variables on opioid mortality rates in the US.

This study has produced several interesting empirical results that carry some policy implications of interest for policy-makers and government agencies alike.



OPPORTUNITIES



WE ARE HIRING!

Graduate Program Coordinator

We are looking for a dedicated
communicator and manager to
facilitate our graduate program!

bit.ly/ee-grad-coord



Department of
Earth & Environment

bu.edu/earth

Are you interested in working with the BU Earth & Environment Department? Do you know someone who might be? [Check out the application here!](#)

ENVIRONMENTAL PROTECTION AGENCY

Opportunity: Internship | Combat the Climate Crisis by Building Adaptive Capacity and Resilience

The Biden administration is making a historic investment in ensuring communities across the United States are anticipating, preparing for, adapting to and recovering from the impacts of climate change. Join EPA's Climate Adaptation Program in charting the course to a more just and climate resilient nation. Application Due Date: **07/31/2023**.

You can view more [details about this Internship here](#).

NOAA: NATIONAL ESTUARINE RESEARCH RESERVES

Opportunity: Fellowship | Margaret A. Davidson Graduate Fellowship

The two-year [Margaret A. Davidson Graduate Fellowship](#) focuses on field research in social or natural sciences within Narragansett Bay and its watershed. Fellows receive \$45k per year for two years through this opportunity to address [today's coastal challenges](#), develop marketable career skills, build a professional network, receive on-site mentor support, and partner with coastal professionals and local communities. Check out this [video!](#)

Eligible applicants must be U.S. citizens admitted to or enrolled in a full-time graduate program at a U.S. accredited college or university, working to obtain a master's or doctoral degree. Applicants must plan to be enrolled for all of the first year, and the majority of the second year, of funding.

Application deadline: December 4, 2023 | Fellowship begins: August 1, 2024

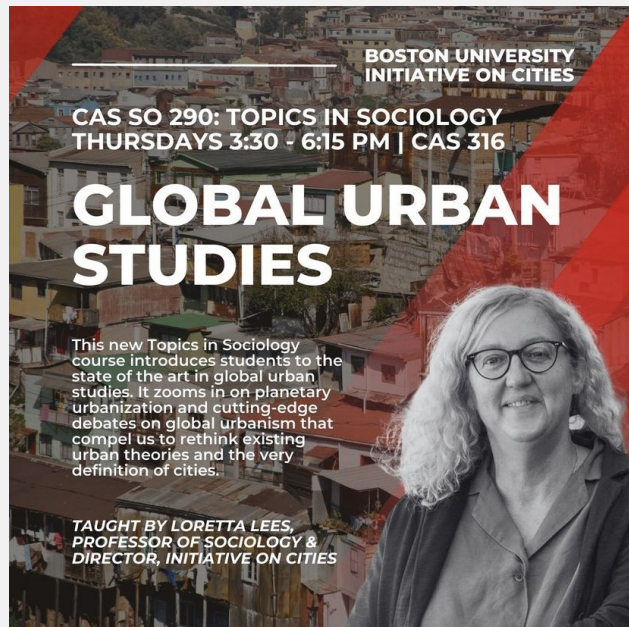
[Check out previous opportunities here](#).

DEPARTMENT & ADVISING NOTES

PRONOUNS: Gender & Faculty/Staff/Student Profiles

As part of our continued efforts to make the department safer and more welcoming to everyone, we are working to update all of our faculty, staff, and graduate student profiles to include [gender pronouns](#). We ask that you take a minute to [fill out this survey regarding your personal pronouns](#) so that we can include them on our website and documentation.

If you have any questions or concerns (ex. you use certain pronouns at school but don't want them visible to others), please don't hesitate to reach out to Emma Roth. They are happy to answer any questions about this process or about the purpose of this update. If you are curious about queerness on campus, you can also check out the [BU OUT List](#) for a list of "out" staff and faculty on campus.



FALL 2023 COURSE REC:

Global Urban Studies

This new Topics in Sociology course introduces students to the state of the art in global urban studies. It zooms in on planetary urbanization and cutting-edge debates on global urbanism that compels us to rethink existing urban theories and the very definition of cities.

This course is offered by the Sociology Department and taught by [Professor Loretta Lees](#).

FALL 2023 COURSE REC:

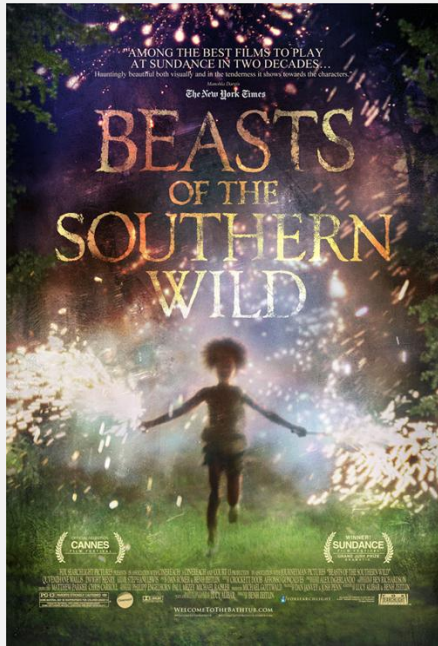
David Demeritt Joins Department, Teaching Environmental Risk, Governance, and Society



From Professor Demeritt:

As a long-time Red Sox fan, I'm very excited to be coming to BU and joining your Department of Earth & Environment this autumn. Like E&E at BU, my research and teaching interests are wide-ranging and span the natural and social sciences. Alongside my continued focus on climate change and flood risk, I will also continue my involvement in funded research on wildfires, through the [Leverhulme Centre for Wildfires Environment & Society](#), as well as another project focused on managing the [risks of antimicrobial resistance from uncontrolled usage of veterinary medicines in Argentina](#).

FUN-GI SECTION



SUMMER MEDIA REC Beasts of the Southern Wild

Directed By Benh Zeitlin

Are you looking for more climate media, that actually reckons with the harm being done and that will be done? Are you looking for something that does so with beauty and care? Look no further!

"Benh Zeitlin's debut feature is part film, part hallucination: a ripe and gamey piece of what you might call Apocalyptic Southern Gothic, ambitious and flawed but sprinting with energy. It's set at the time of the Katrina catastrophe – though it could as well be happening hundreds of years in the future, when much-prophesied climate calamities have come to pass. At other times it looks like some sort of modern-dress re-enactment of the distant biblical flood."

Starring Quvenzhané Wallis and Dwight Henry, this movie is available on Amazon Prime and YouTube.



SUMMER MEDIA REC Everything That Rises

By Brianna Craft

Nineteen-year-old Brianna Craft is having a panic attack. A professor's matter-of-fact explanation of the phenomenon known as "climate change" has her white-knuckling the table in her first environmental studies lecture. Out of her father's house, she was supposed to be safe.

This moment changed everything for Brianna. For her first internship, she jumped at the chance to assist the Least Developed Countries Group at the United Nations' negotiations meant to produce a new climate treaty. While working for those most ignored yet most impacted by the climate crisis, she grappled with the negligent indifference of those who hold the most power.

Brianna dives into what it means to advocate for the future, and for the people and places you love, all while ensuring your own voice doesn't get lost in the process.

MEME/JOY OF THE WEEK



sunweek Follow

what you don't get is science exists because people can love. medicine exists because people love each other enough to want each other to live long healthy lives. astronomy exists because someone loved the stars and the planets enough to track them through their ever changing position in the darkest night. science exists because humans are curious little creatures and we want to know the world around us and understand it like it does us. we know stars and planets worlds away, we've sent cameras worlds away, all because we love the universe, and we also put love in those satellites!! we sent the sound of a 100 languages, lovely messages, the sound of rain and a laugh, all out there just in case there's someone in the universe looking for us like we do them, and so that they know that they were never alone, and we sent them the most simple loving things we could find.

science exists because people can love

If you have updates, announcements, or events that you would like sent via the newsletter, please reach out to Emma Roth (they/them) at emroth@bu.edu.



Boston University Department of Earth & Environment | 685 Commonwealth Avenue, Boston, MA
02215 Suite 130

[Unsubscribe emroth@bu.edu](#)

[Update Profile](#) | [Constant Contact Data Notice](#)

Sent by earth@bu.edu powered by



Try email marketing for free today!