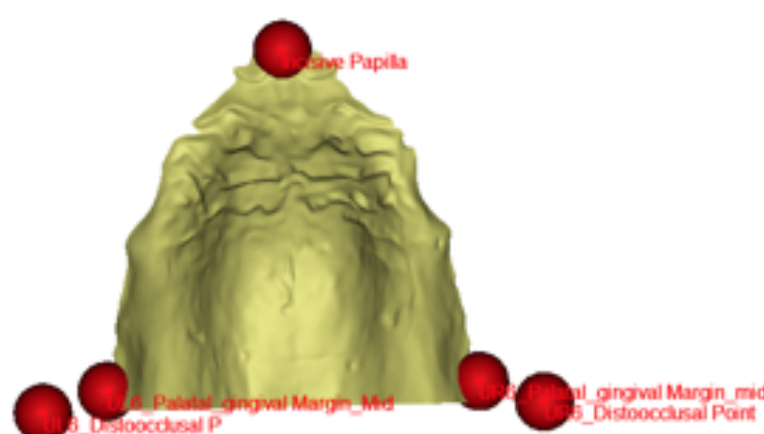


PALATAL CHARACTERISTICS CORRELATED TO FACIAL CHARACTERISTICS

This study aims to correlate the palatal characteristics (depth, volume, area) with facial convexity and divergence and compare the correlation in monozygotic, dizygotic twins and siblings.



1.

Restrospective Study :
Evaluated deidentified
lateral cephalometric
radiographs and casts from a
pre-existing database.

2.

Cephalometric analysis
and measurements were
performed on radiographs to
analyse the facial
convexity and divergence.

3.

Measurements using mimics
software were done on the casts
to measure palatal
characteristics.

4.

Cephalometric Measurements
were correlated to Palatal
Charcateristics.

RESULTS

- There is a negative correlation between Go-Gn/Sn and the volume as well as the surface. ($p < 0.05$)
- ANB and Gonial angle are negatively corelated to the palatal volume. ($p < 0.05$)
- Lower face height was negatively correlated to the surface. ($p < 0.05$)
- Facial characteristics in the vertical plane are correlated to the palatal depth and volume.

