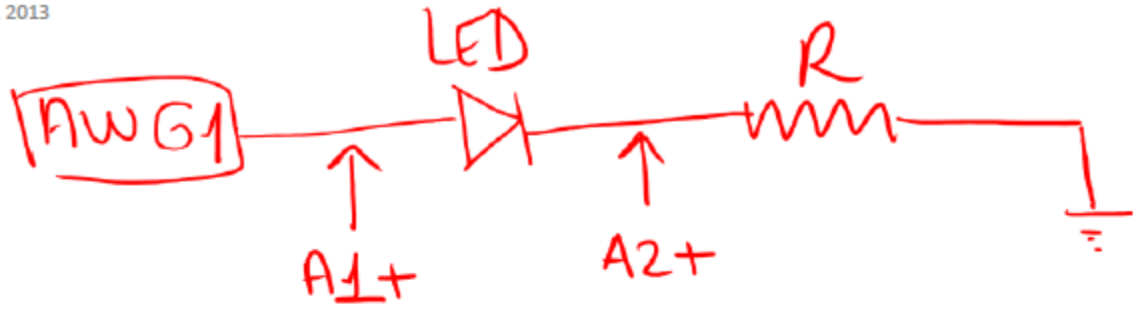
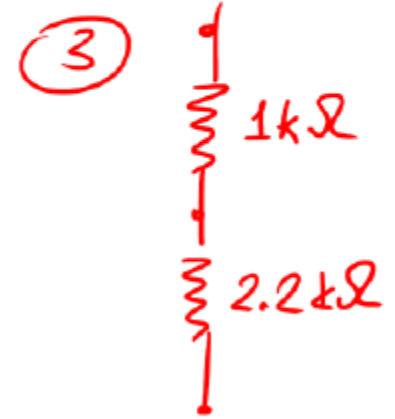


Continued from Lab 3:

Wednesday, July 24, 2013
3:15 PM



R:



- * Keep AWG1 at 3.3V DC.
- * How do V at A1+ and A2+ change? why? how about brightness?

Lab 4: Photodiodes (PDs) and Visible Light Communication (VLC) Links

SUMMER CHALLENGE COURSE SMART LIGHTING

Ozan Tuncer
otuncer@bu.edu

Slides: Hany Elgala, Ph.D.

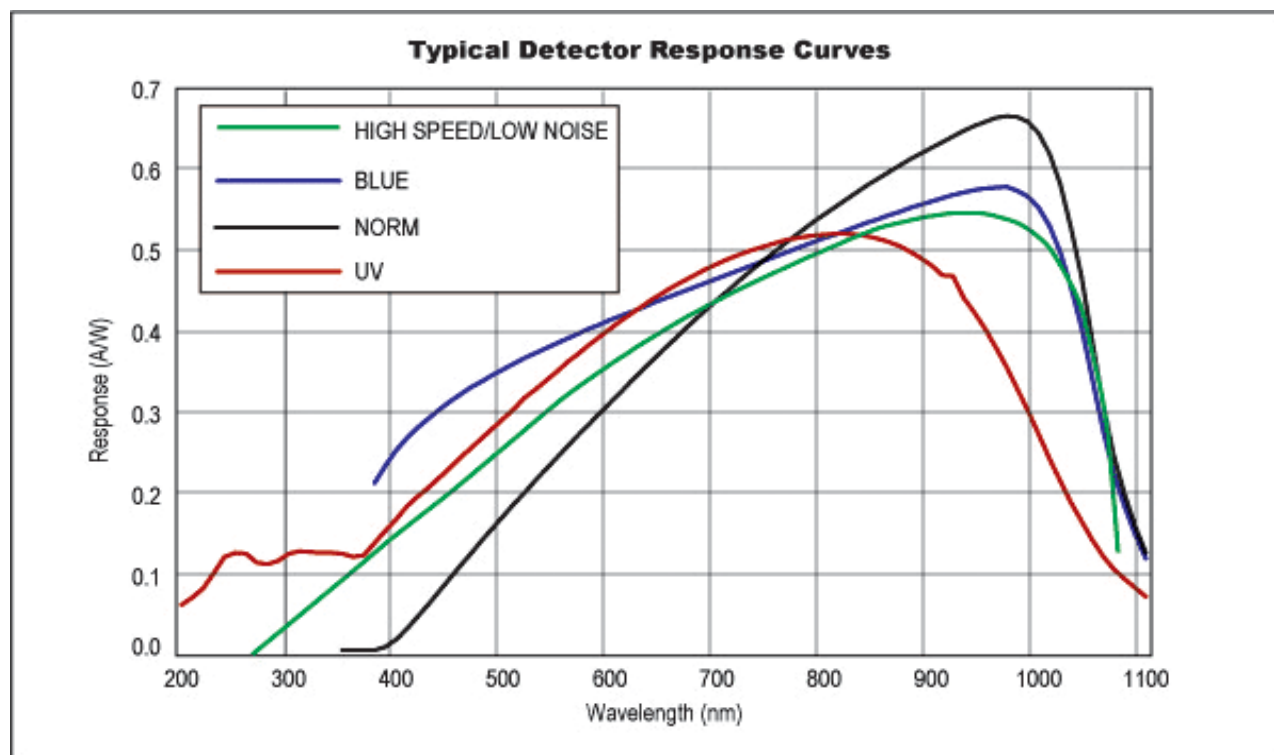


- PIN Photodiode (PIN-PD)
- Avalanche Photodiode (APD)



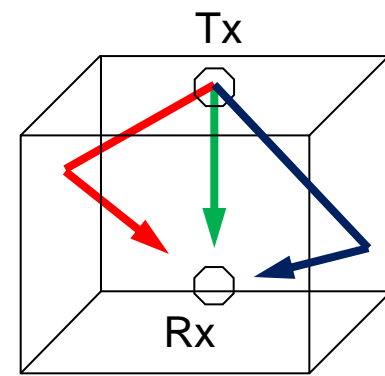
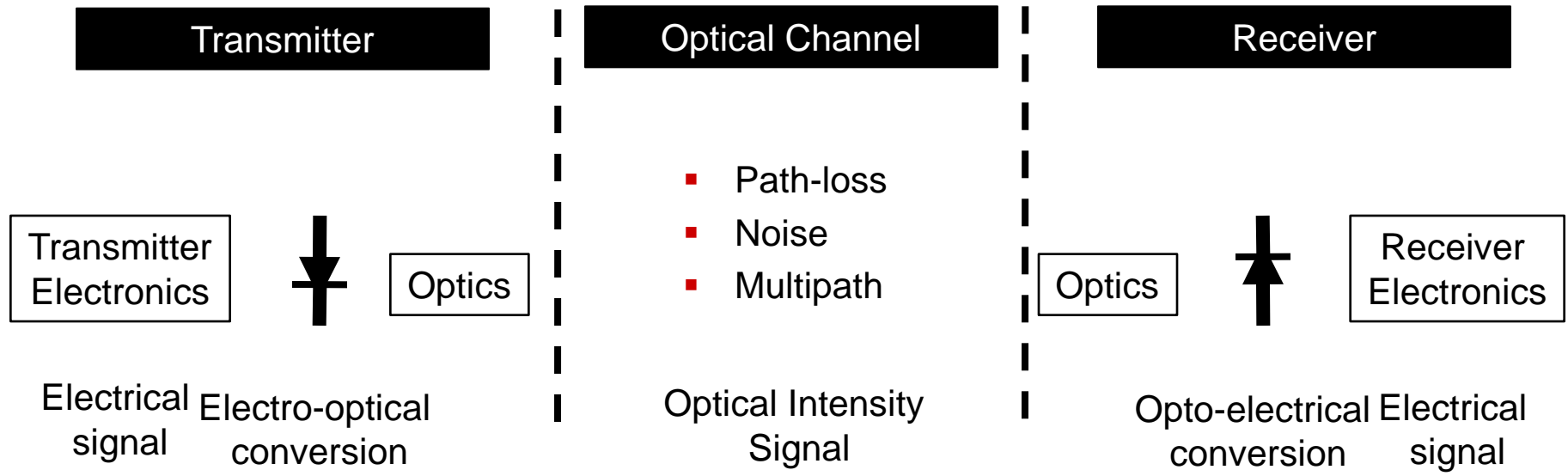
Parameters:

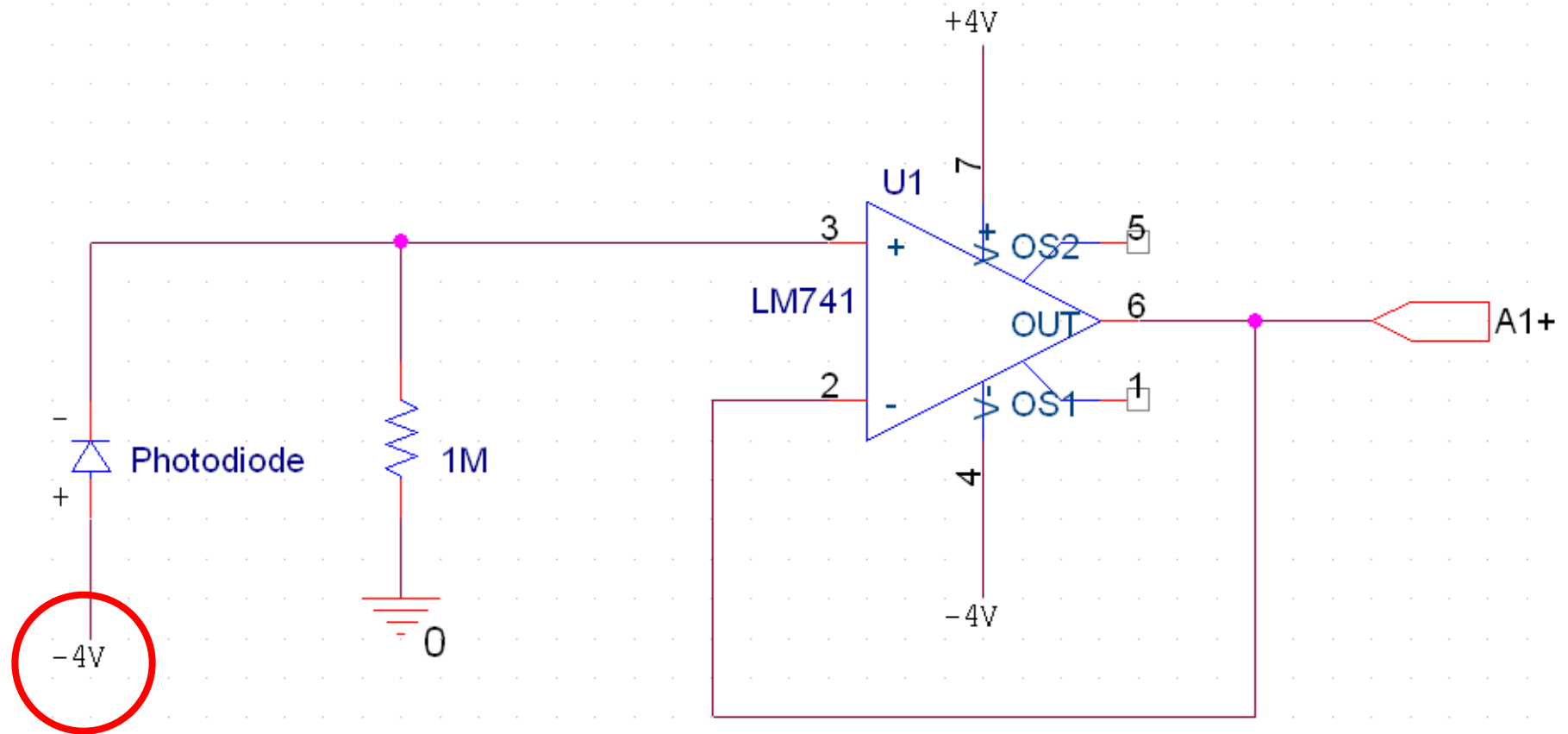
- Active area
- Speed
- Responsivity (A/W)



Optical Modulation:

- Intensity-Modulation (IM) and Direct-Detection (DD)





Ambient light: refers to sources of light that are already available naturally (e.g. the sun) or artificial (e.g. to light a room).

