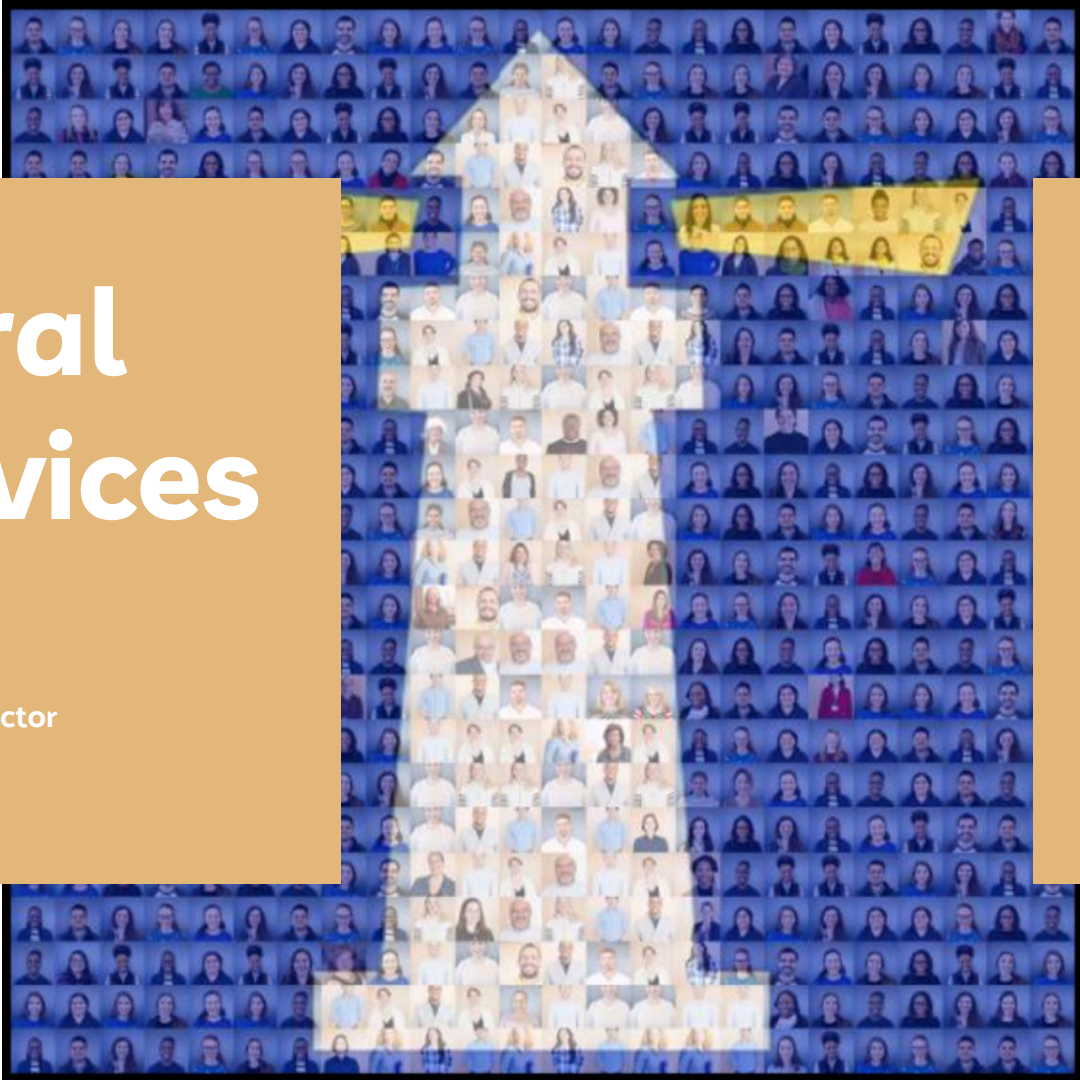


# Behavioral Health Services

Dr. Andria Amador, Senior Director  
11-16-23



# DEPARTMENT ROLE & PURPOSE

Through the use of culturally and linguistically sustaining practices we will meet the behavioral health needs of **ALL** BPS students by providing direct services and supports to students and staff across a continuum of **prevention**, **early interventions** and **intensive services**.

- Partner with school leaders and educators to implement MTSS
- Provide direct services to students including special education services
- Develop integrated community partnerships

# BHS ORG CHART

**Andria Amador,**  
Senior Director

**Ivonne Borrero**  
Assistant Director

Mary Doolin:  
Lead Clerk  
Marie-Christine Mates  
Clerk

109 School  
Psychologists  
SY 23-24

VACANT  
CBHM Coach  
(Grant Funded)

VACANT  
CBHM Data & Research  
Coordinator  
(Grant Funded)

## Languages Spoken:

Arabic  
German  
Spanish  
Haitian Creole  
Portuguese  
French  
Cape Verdean Creole  
Hebrew  
Russian  
Italian  
Korean  
Chinese Mandarin/Cantonese/Toisanese  
American Sign Language  
Jamaican Patois

# BHS INITIATIVES:

## CBHM

- **Comprehensive Behavioral Health Model (CBHM)**
  - CBHM is a multi-tiered framework which has been constructed to integrate behavioral health services in order to create safe and supportive learning environments that optimize academic outcomes for all students.
  - 76 schools with over 33,000 students served
  - Initiative goals
    - Create safe and supportive schools
    - Expand the role of BHS staff
    - Implement a multi-tiered system of support
  - Initiative outcomes
    - Increases in positive behaviors
    - Increases in academic skills
    - Decreases in problem behaviors

# BHS INITIATIVES:

## BSBBHC

- **Boston School Based Behavioral Health Collaborative (BSBBHC)**
  - BSBBHC is formed to bring community partners and BPS together to support the mental health needs of students through integrated service delivery. BSBBHC develops standards, strategies, actions, and suggestions to enhance community partnerships and behavioral health services in schools.
  - 25 Mental health partners and allied agencies providing services in 85 schools
  - Initiative goals
    - Integrate mental health partnerships into CBHM
    - Increase equity and access to mental health services across the district
    - Ensure quality services and use of evidence based practice
  - Initiative outcomes
    - Development of standards of practice for partnering agencies
    - Yearly conference for community mental health clinicians
    - Joint use of evidence based practices for anxiety and trauma

# BHS INITIATIVES:

## University Partners

- **University Partnerships**

- **Create integrated partnerships which result in a variety of collaborations including:**
  - **Professional development**
  - **Research and professional publications**
  - **Consultation and support**

- **University Student Training Program**

- **BHS is part of the MA School Psychology Trainers group**
- **Each year BHS trains and supports 50 SP university students**

### Initiative goals

- **Sustain a workforce develop strategy to ensure that BHS is able to fill all SP positions**
- **Diversify BHS workforce**
- **Hire SP from our community**

- **Initiative outcomes**

- **BHS has the largest SP training program in New england**
- **BHS has the only Health Service Provider (HSP) doctoral level school-based training program in MA**
- **Integrated partnerships with all 6 school psychology training programs in MA**
- **BHS is training the next generation of SP and is able to hire them into our district**

# BHS INITIATIVES:

## Workforce Development

- **University Student Training Program**
  - **Each year BHS trains and supports 50 SP university students**
  - **Only HSP SP Doctoral training program in a school district in MA**
  - **Awaiting APPIC application**

### Project PROVIDE

- Sustain a workforce develop strategy to ensure that BHS is able to fill all SP positions
- Diversify BHS workforce
- Hire SP from our community
- Provide high quality pd to all MH providers that work in or with our students

### BHS Professional Development

- 100+ hours of pd yearly
- Professional Learning Communities
- Online learning modules
- Collaborations with local, state and national organizations and speakers

# **BHS INITIATIVES:**

## **BHS Research and Data Team**

- Responsible for evaluation procedures to evaluate the outcomes and outputs
- Produce peer reviewed journal articles
- Support doctoral students dissertation projects
- Disseminate information to stakeholders
- Led by BPS and has university partners and hospital partners



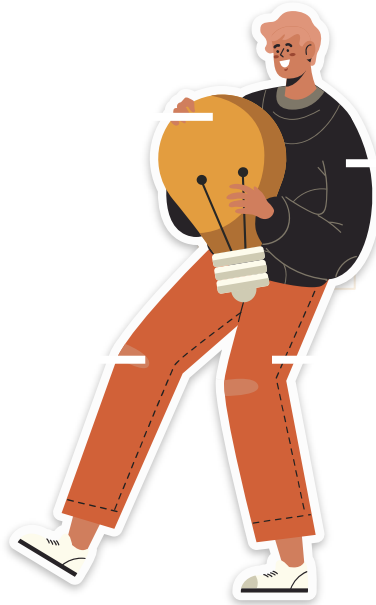
# Partnerships

**University  
Partners**

**Community  
Partners**

**Professional  
Organizations**

**Internal  
Partners**



# University Partners

**UMASS Boston**  
**UMASS Amherst**  
**Northeastern University**  
**Tufts**  
**William James College**  
**Boston University**  
**Worcester State**  
**SUNY Oswego**  
**University of Northern**  
**Colorado**

## Accomplishments

- BHS Intern Research Committee
- Development of MA-SPT
- MA-SPT Annual Supervision Institute
- Robust university student training Program
- HSP training Site
- Joint conference presentations
- Peer Reviewed Articles
- Joint training across university and districts
- Workforce development strategy
- Joint grant applications
- Advocacy



# Professional Organizations



## Local

- Mental Health Taskforce
- Crisis taskforce
- HUB tables

- MSPA
- Children's Mental Health Campaign
- Safe and Supportive Schools BIRCH

## State

## Regional

- New England MHTTC
- Thrive NYC
- Newark Trust for Education

- NASP
- NIMH
- National Safety Coalition
- Cities Thrive
- Council of Great City Schools

## National



## BHS...

- is the only Health Services Provider/ School Psych Doctoral Training Program in the State
- is the largest school psychologist training program in New England
- has its own research committee
- was awarded national recognition by the NASP
- has 5 school psychologists who have been named MA School Psychologist of the Year
- has written many peer reviewed journal articles and presented at numerous national conferences
- have staff who have been awarded the Shattuck Award and Teacher of the Year Award

# SUCCESS

- Increased the racial and linguistic diversity of our department
- Have robust, high quality professional learning for BHS staff and for educators
- Strong partnerships with school leaders
- Developed a strong team climate
- Expanded the role of school psychologists to meet the needs of students
- Assisted in bringing MTSS to Boston
- Have numerous strong partnerships at the local, state and national level
  - Boston School-Based Behavioral Health Collaborative (BSBBHC)
  - CBHM research committee
  - University training programs
  - Boston Emergency Services Team (BEST)
  - Boston Public Health Commission

# DEPARTMENT SUCCESSES AND CHALLENGES

## Successes

- Higher quality services to students
- Positive Student level outcomes
- Intentional social justice work
- Adoption of new role for SP
- Increased staff diversity
- Greater job satisfaction
- Systematic mental health services to students
- Addressing the research to practice gaps

## Challenges

- Time...time...time...time
- Money
- Fidelity of Implementation
- Organizational change and priorities change
- Staffing
- School Autonomy and size
- Fragmented and Insufficient funding at the local, school-based mental health partnerships and children's mental health services
  - Lack of integration between education, health care and mental health care at the state and federal level
  - National shortages of school psychologists, bilingual school psychologists, school psychology training programs and university faculty

# FOR MORE INFO...

Visit

[BPS Behavioral Health Site](#)  
[CBHM Website](#)

Email

[aamador@bostonpublicschools.org](mailto:aamador@bostonpublicschools.org)

