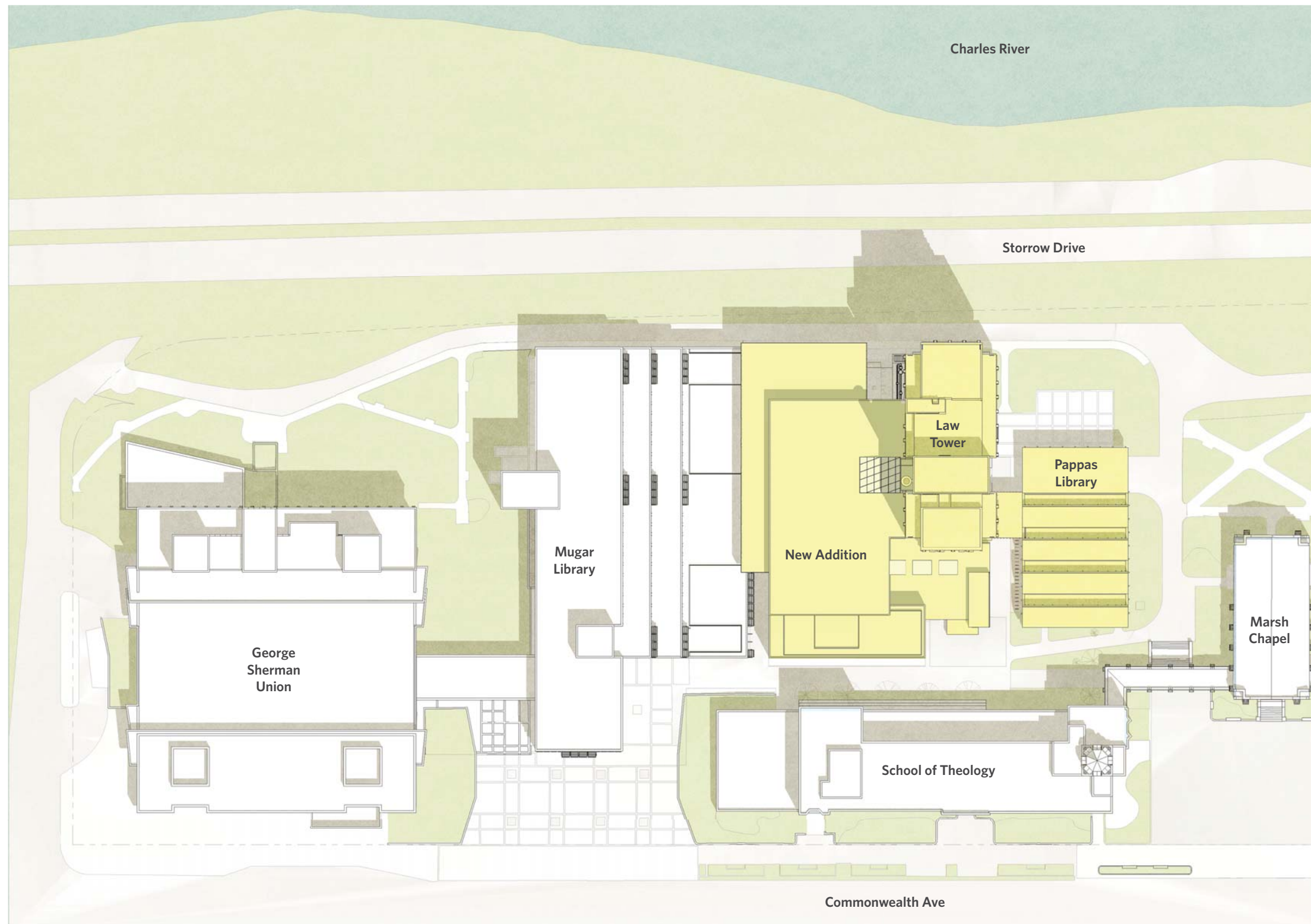
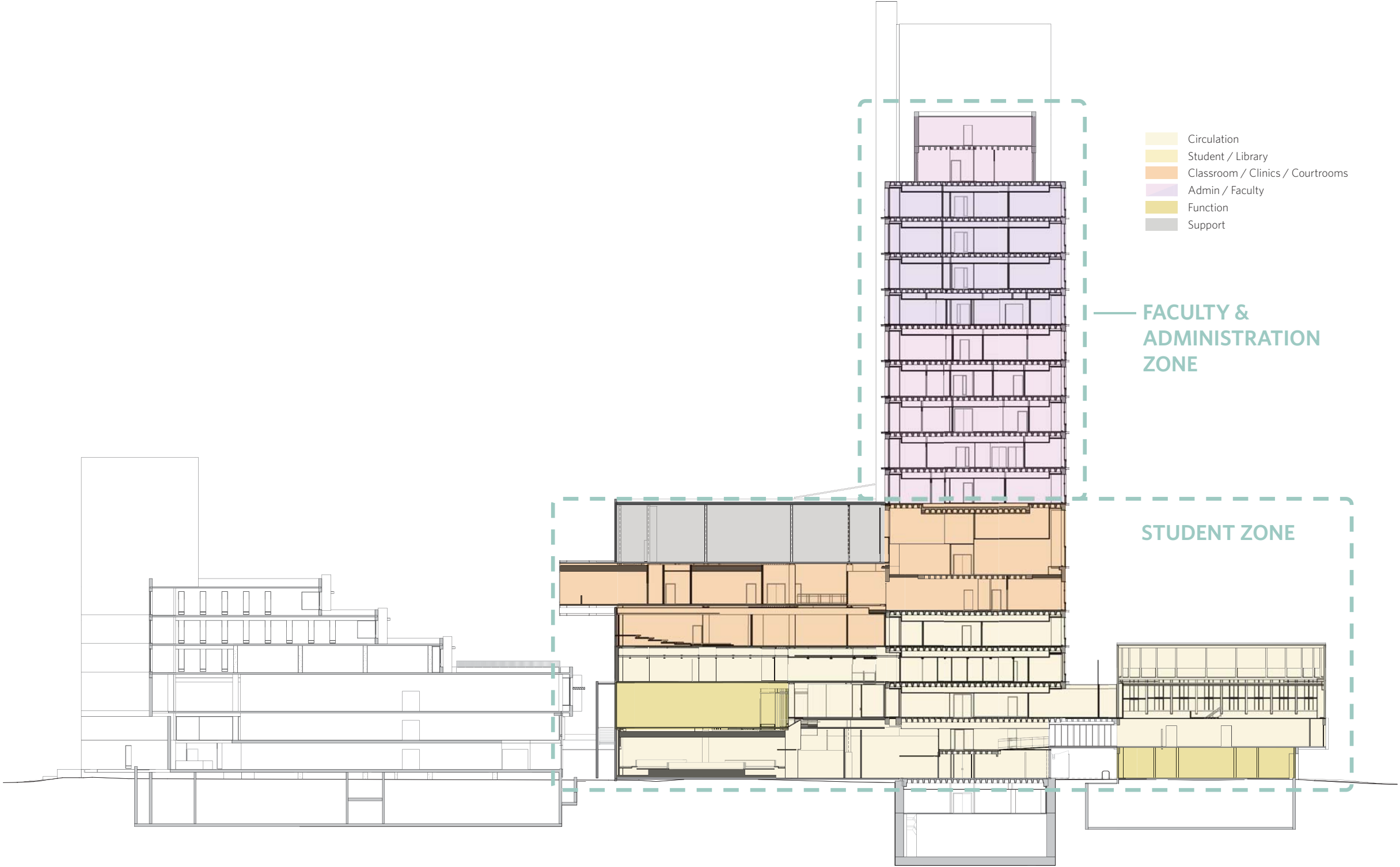


The following are the project goals by which the success of the School of Law renovation and addition project should be judged, together with strategies that have been developed for achieving those goals.

Instruction	Community	Collaborative Research	Professional Practice	Workplace
"Provide quality instructional space supported by well-designed classrooms, outfitted with appropriate technology."	"Encourage and support a sense of community for students, faculty and staff."	"Increase the availability of study, research and collaborative learning spaces both inside and outside the Library."	"Support the development of new and existing professional practice program offerings."	"Improve indoor air quality and environmental and acoustical comfort for faculty and staff."
<ul style="list-style-type: none">• Provide a range of classroom sizes and configurations that meet the current and projected future needs of the Law School.• Relocate all large classrooms to more convenient locations on the lower floors of the building. Reduce or eliminate dependence on elevators for classroom access.• Adopt current guidelines for classroom layout, seat spacing, sightlines and acoustics.• Provide state-of-the-art audiovisual, IT and other instructional support systems. Provide increased instructor control over the educational environment.• Provide direct or borrowed natural light to all classrooms.	<ul style="list-style-type: none">• Provide a memorable and positive physical image for the School of Law, both to the outside world and to the Law School community.• Provide a range of opportunities for social interaction within the student body and among students and faculty and staff.• Provide services, including dining, that encourage students to stay within the Law School complex throughout the school day.• Connect the student social space to the day-to-day life of the school, particularly the Law Library/Research Center and classrooms.	<ul style="list-style-type: none">• Consolidate all Library functions, including the majority of the Law Library collection, into a single, contiguous space.• Increase accessibility of the collection by adopting industry standards for stack configuration, spacing and density.• Adopt industry standards for Law Library table space and carrel size. Provide all required Library seating within the single, contiguous Library.• Provide a range of study spaces for individual, small and medium-sized groups, both inside and outside the Library.• Make all levels of the Law Library wheelchair accessible.	<ul style="list-style-type: none">• Expand space for Clinical programs to meet student demand. Provide additional practice moot courts.• Provide space for the new Transactional Law program. Locate seminar and breakout spaces in close proximity to support the Transactional Law program.• Provide professional practice classrooms with technology for distance learning and video conferencing as appropriate.• Provide new Executive and Professional Program classrooms. Provide breakout and function space appropriate to Executive Education curriculum.	<ul style="list-style-type: none">• Provide new, high-performance Tower envelope.• Provide new, state-of-the-art mechanical systems in the Tower for improved energy efficiency, occupant comfort and acoustic performance.• Remove high-traffic assembly spaces from upper floors of Tower to reduce demands on existing elevators.• Reorganize administrative offices for increased efficiency of administrative groups and improved student access to administrative functions.• Reorganize faculty offices for increased faculty interaction and improved access to shared faculty facilities.









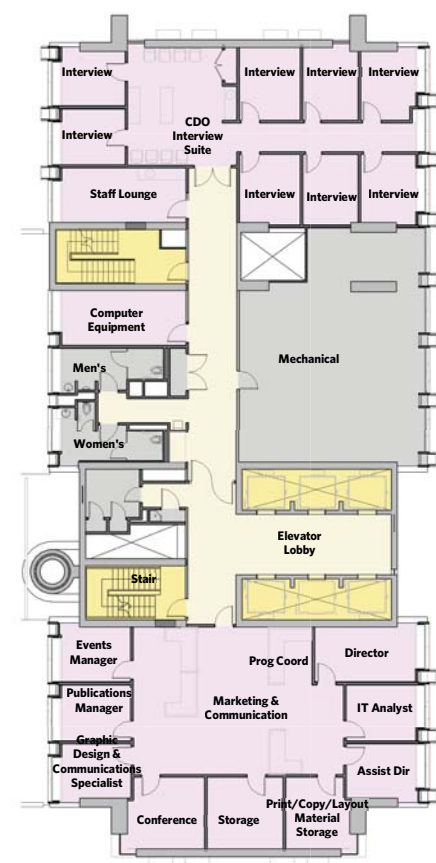








Level 8



Level 14

