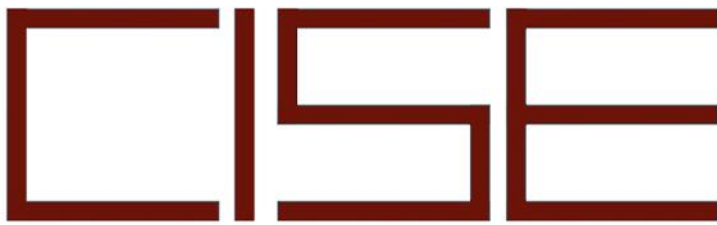




Center for Information & Systems Engineering



CENTER FOR INFORMATION & SYSTEMS ENGINEERING

# NEWSLETTER

## Upcoming CISE Events



### **CISE SEMINAR** **FRI DEC 3**

**CISE/AIR Initiative Seminar:**  
**Rogério Schmidt Feris**  
Principle Scientist and Manager  
MIT-IBM Watson AI Lab

**Topic:** Dynamic Neural Networks for  
Efficient Multimodal Video  
Understanding



### **CISE SEMINAR** **FRI DEC 10**

**Rayadurgam Srikant**  
Prof. of Electrical and Computer  
Engineering  
University of Illinois at Urbana-  
Champaign

**Topic:** The Role of Lookahead and  
Approximate Policy Evaluation in  
Policy Iteration with Linear Value  
Function Approximation



## **CISE-SE HOLIDAY BRUNCH**

**FRI DEC 10**

**11:30AM-1:30PM**

**Join us!**

**In-Person Event**

15 St. Mary's St/730 Comm. Ave.  
Room 301



## **CISE GRADUATE STUDENT WORKSHOP (CGSW 8.0)**

**FRI JAN 21, 2022**

**9:00AM-4:30PM Workshop**

15 St. Mary's St/730 Comm. Ave  
Room EMB 134

**4:30PM-7:00PM Reception**

BU Castle

**In-Person Event**

Learn more [here](#).

## **CGSW 8.0 CALL FOR ABSTRACTS:** Deadline: DEC 15, 2021

The CISE Graduate Student Workshop is open to all students of Affiliated CISE Faculty.

- Students present their original research.
- Attendees vote for Best Presenter.
- All enjoy a day-long conference of socializing and networking, capped by an award reception at the BU Castle.

CGSW 8.0 is Friday, Jan. 21st  
Learn more [here](#).

**Questions? Contact:**

**The CGSW 8.0 Student Organizers**



- Mahroo Bahreinian (SE) [mahroobh@bu.edu](mailto:mahroobh@bu.edu)
- Zachary Bezemek (Math/Statistics) [bezemek@bu.edu](mailto:bezemek@bu.edu)
- Salomón Wollenstein-Betech (SE) [salomonw@bu.edu](mailto:salomonw@bu.edu)
- Zongshun Zhang (CS) [zhangzs@bu.edu](mailto:zhangzs@bu.edu)

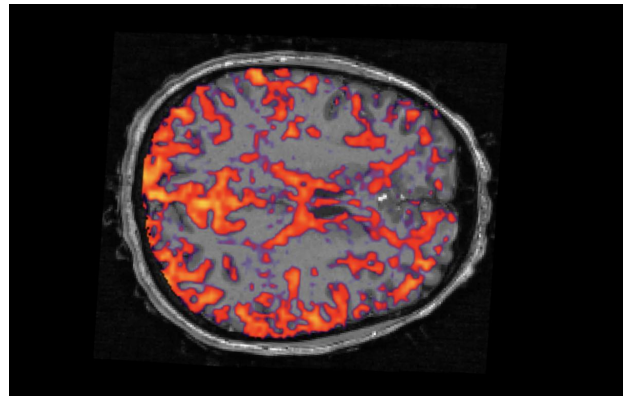
## CISE Affiliate News

CISE Director **Yannis Paschalidis** (ECE, SE, BME, CDS) along with ENG Prof. Xin Zhang (ME, ECE, BME, MSE) and BUSM Prof. Stephan Anderson received a Kilachand fund award after winning a University-wide funding competition judged by an advisory committee. Advancing diagnostic imaging tools, the interdisciplinary team will develop an ultra-low field (ULF) MRI system with much smaller magnets. Read more [here](#).



CISE Faculty Affiliate **Alex Olshevsky** (ECE, SE) he developed a collection of robots that could monitor regions and communicate with each other and compensate if one robot malfunctioned. Olshevsky used this application of multi-agent control to determine the optimal lockdown to control the pandemic. Read more [here](#).

A BU team, including **Lei Tian** (ECE, BME) and other college professors across the US, received a large collaborative NIH **BRAIN Initiative award** to develop a method for extracting information about neuronal circuit activity from functional magnetic resonance imaging (fMRI) scans. Read more [here](#).



Assistant Professor **Alan Liu** (ECE) has received support from the National Science Foundation (NSF) for three related projects aimed at building more robust protections for our essential communications

systems while boosting their functional capacity. Read more [here](#).

CISE Alumnus Tommy Vitolo (PhD SE '11) has been inducted into NC State University Computer Science Hall of Fame.

Advised by Professor **David Castañón** (ECE, SE), Vitolo's research focused on optimizing environmental and energy-related policies. Read more [here](#).



Share news about your research or accolades [here](#).

Boston University's Center for Information & Systems Engineering (CISE) is a university-wide research center focused on deepening and broadening interdisciplinary research in the study and design of intelligent systems with broad societal applications. Learn more at [www.bu.edu/cise](http://www.bu.edu/cise).

