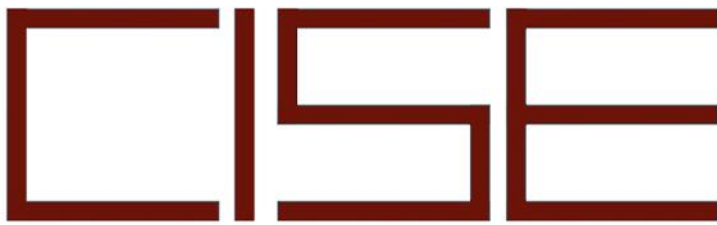




Center for Information & Systems Engineering



CENTER FOR INFORMATION & SYSTEMS ENGINEERING

NEWSLETTER

Upcoming CISE Events



CISE SEMINAR **FRI DEC 3**

CISE/AIR Initiative Seminar:
Rogério Schmidt Feris
Principle Scientist and Manager
MIT-IBM Watson AI Lab

Topic: Dynamic Neural Networks for Efficient Multimodal Video Understanding



CISE SEMINAR **FRI DEC 10**

Rayadurgam Srikant
Prof. of Electrical and Computer Engineering
University of Illinois at Urbana-Champaign

Topic: The Role of Lookahead and Approximate Policy Evaluation in Policy Iteration with Linear Value Function Approximation



CISE-SE HOLIDAY BRUNCH

FRI DEC 10

11:30AM-1:30PM

Join us!

In-Person Event

15 St. Mary's St/730 Comm. Ave.
Room 301



CISE GRADUATE STUDENT WORKSHOP (CGSW 8.0)

FRI JAN 21, 2022

9:00AM-4:30PM Workshop

15 St. Mary's St/730 Comm. Ave
Room EMB 134

4:30PM-7:00PM Reception

BU Castle

In-Person Event

Postponed until April

CGSW 8.0 CALL FOR ABSTRACTS:

Deadline: DEC 15, 2021

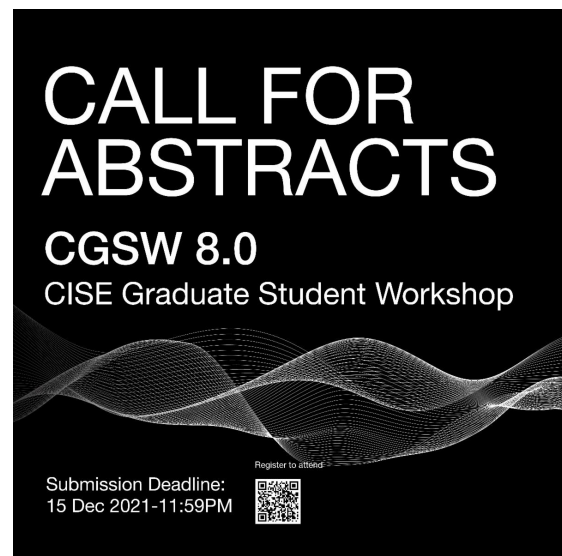
The CISE Graduate Student Workshop is open to all students of Affiliated CISE Faculty.

- Students present their original research.
- Attendees vote for Best Presenter.
- All enjoy a day-long conference of socializing and networking, capped by an award reception at the BU Castle.

CGSW 8.0 is Friday, April. 15th

Questions? Contact:

The CGSW 8.0 Student Organizers



- Mahroo Bahreinian (SE) mahroobh@bu.edu
- Zachary Bezemek (Math/Statistics) bezemek@bu.edu
- Salomón Wollenstein-Betech (SE) salomonw@bu.edu
- Zongshun Zhang (CS) zhangzs@bu.edu

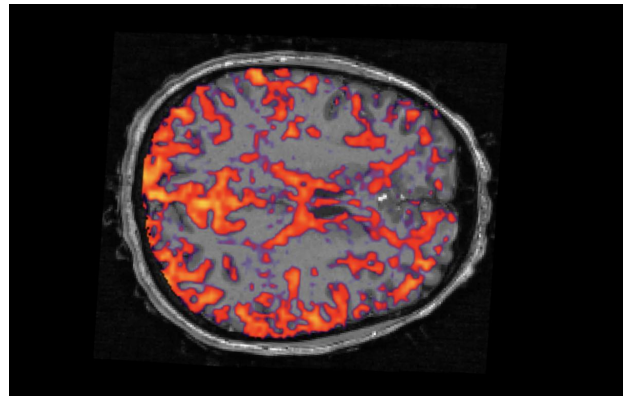
CISE Affiliate News

CISE Director **Yannis Paschalidis** (ECE, SE, BME, CDS) along with ENG Prof. Xin Zhang (ME, ECE, BME, MSE) and BUSM Prof. Stephan Anderson received a Kilachand fund award after winning a University-wide funding competition judged by an advisory committee. Advancing diagnostic imaging tools, the interdisciplinary team will develop an ultra-low field (ULF) MRI system with much smaller magnets. Read more [here](#).



CISE Faculty Affiliate **Alex Olshevsky** (ECE, SE) he developed a collection of robots that could monitor regions and communicate with each other and compensate if one robot malfunctioned. Olshevsky used this application of multi-agent control to determine the optimal lockdown to control the pandemic. Read more [here](#).

A BU team, including **Lei Tian** (ECE, BME) and other college professors across the US, received a large collaborative NIH **BRAIN Initiative award** to develop a method for extracting information about neuronal circuit activity from functional magnetic resonance imaging (fMRI) scans. Read more [here](#).



Assistant Professor **Alan Liu** (ECE) has received support from the National Science Foundation (NSF) for three related projects aimed at building more robust protections for our essential communications

systems while boosting their functional capacity. Read more [here](#).

CISE Alumnus Tommy Vitolo (PhD SE '11) has been inducted into NC State University Computer Science Hall of Fame.

Advised by Professor **David Castañón** (ECE, SE), Vitolo's research focused on optimizing environmental and energy-related policies. Read more [here](#).



Share news about your research or accolades [here](#).

Boston University's Center for Information & Systems Engineering (CISE) is a university-wide research center focused on deepening and broadening interdisciplinary research in the study and design of intelligent systems with broad societal applications. Learn more at www.bu.edu/cise.

