



Department of Chemistry
Chemical Instrumentation Center

Mass Spectrometry



*We Welcome All Members of the
BU Community and Beyond*

(617) 358-0258
CIC@BU.EDU

WWW.BU.EDU/CHEMISTRY/RESOURCES/CIC

BU CIC MS Rates

Service	non-BU Rate
Submission	
ESI LR	\$ 35
ESI HR	\$ 50
ESI LC/MS LR	\$ 50
GC-MS LR	\$ 15
MALDI	\$ 50
Open Access	
OA LR	\$ 21 / hr
OA LC/MS	\$ 21 / hr
OA GC-MS	\$ 3
OA MALDI	\$ 21 / hr

Note: all rates are per sample unless otherwise noted and typical turn-around time is up to 5 business days

ESI: Electrospray Ionization

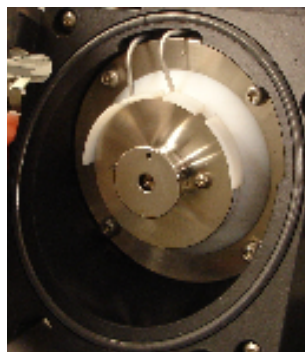
LC/MS: Liquid Chromatography Mass Spectrometry

GC-MS: Gas Chromatography Mass Spectrometry

MALDI: Matrix Assisted Laser Desorption Ionization

LR: Low Resolution (1 decimal place)

HR: High Resolution (4 decimal places)



More Instrumentation

Planned

- New MALDI
- New Ion Trap
- New LC/MS/MS
- UPLC
- Triple Quad
- GC-MS TOF
- Preparative LC



Contact Us

Chemical Instrumentation Center Mass Spectrometry

Boston University
Department of Chemistry
590 Commonwealth Avenue
Boston, MA 02215

Phone: (617) 358-0258

Fax: (617) 617-353-6466

Email: CIC@BU.EDU

WWW.BU.EDU/CHEMISTRY/RESOURCES/CIC

MS Instrumentation

CIC houses five mass spectrometers

- Agilent 1100 LC/MSD VL
- Agilent 1100 LC/MSD SL
- Agilent 6890N GC-MS
- Shimadzu Axima-CFR MALDI TOF
- Waters Q-ToF API-US

Two types of services are offered: Open Access and Submission. Open Access is granted upon completion of training for BU users only.

Submission service is available on all of our instruments to both BU and non-BU users. Please contact us for details.

OPEN ACCESS



Agilent LC/MSD VL

The LC/MSD VL is a single-quad low res (to 1 decimal) instrument capable of operating in ESI+/- modes up to 1500 m/z. Method types available are flow injection analysis (FIA - no column) and liquid chromatography (LC - C18 column) mass spectrometry. Solvents are Water and Acetonitrile spiked with 0.1% formic acid.



Agilent Ion Trap LC/MSD SL

The LC/MSD SL is an ion trap instrument equipped with ESI+/- and APCI+/- ionization sources. It is undergoing an upgrade. Please stay tuned.



Agilent 6890N GC-MSD

The GC-MSD a gas chromatography mass spectrometry instrument with an EI source and MS detector up to 800 m/z. It has a 100-vial capacity sampler tray.



Shimadzu Axima-CFR MALDI TOF

The Matrix Assisted Laser Desorption Ionization (MALDI) time of flight (TOF) system is capable both in positive and negative modes up to 100,000 m/z. It can be operated in linear and reflectron modes. This instrument is suited for small molecules, polymers, peptides and proteins with appropriate matrices.

SUBMISSION ONLY



Waters QToF API US

The QToF is a quadrupole - time of flight hybrid high resolution (4 decimal places) tandem accurate mass system capable of in both positive and negative modes up to 8,000 m/z. This instrument is only available for submission and please consult with QToF sample submission guidelines before submitting samples to us. Tandem MS/MS is also available. Please contact CIC if you would like to invite us to participate in your project.

Chemical Instrumentation Center Mass Spectrometry

Boston University
Department of Chemistry
590 Commonwealth Avenue
Boston, MA 02215
Phone: (617) 358-0258
Fax: (617) 617-353-6466
Email: CIC@BU.EDU
WWW.BU.EDU/CHEMISTRY/RESOURCES/CIC