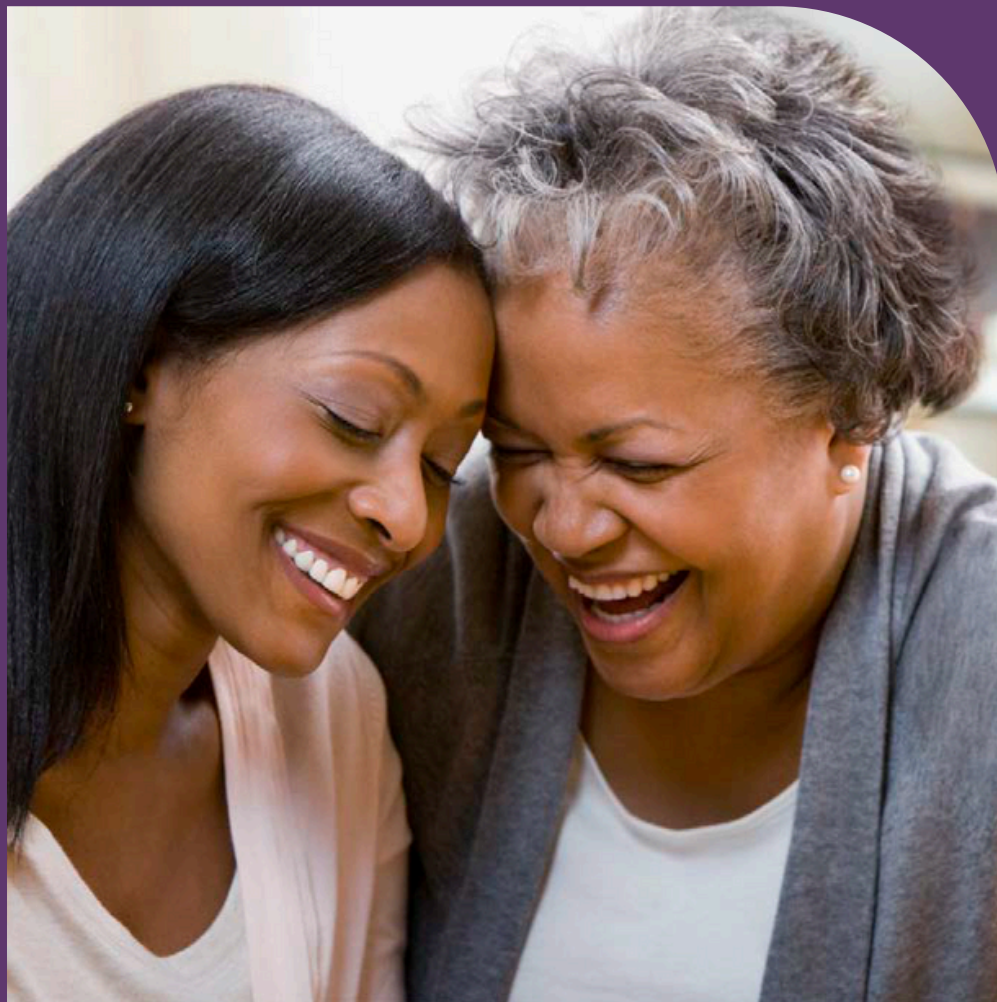


Join the **INSPIRE** Study



Investigating Lung
Screening in **P**opulations
with **I**ncreased **R**isk to
Improve **E**quity



**The Black Women
Health Study is
partnering with lung
cancer researchers in
Boston and Chicago
for a special
program**



1-800-786-0814 (Toll-free)
OR
(617) 206-6200



Bwhs@bu.edu

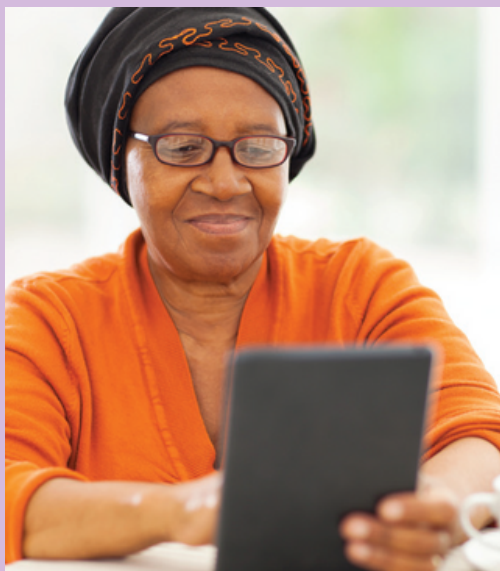


About us :

The goal of this study is to investigate the use of Low-Dose CT scan (LDCT) screening to identify lung and heart diseases. Screening exams are used to check for diseases in people who don't feel any symptoms. Screening can find diseases early, before they cause symptoms and when they are easier to treat.

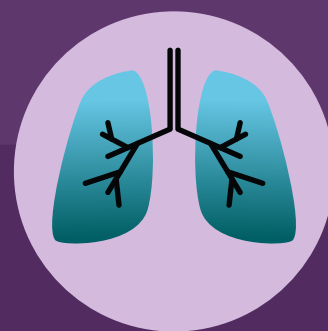
You may be eligible if you:

- Are a BWHS participant
- Are between the ages 50-80
- Either currently smoke or have smoked in the past
- Live near the Boston, MA or Chicago, IL area



What to Expect

- One LDCT screening exam
- Results from your scan, will be reviewed by a radiologist and can be shared with your primary care provider



- Screening involves an LDCT exam, where you lie on your back in the center of a machine that takes detailed pictures of your lungs
- Screening takes less than 5 minutes

Potential Benefits

- LDCT screening may provide important insights into your lung and heart health
- Results from this study will improve understanding of how lung cancer screening can be used for detecting lung cancer and other lung and heart diseases
- Receive up to \$100 as a Visa gift card or Check after completing the LDCT exam and for transportation cost

