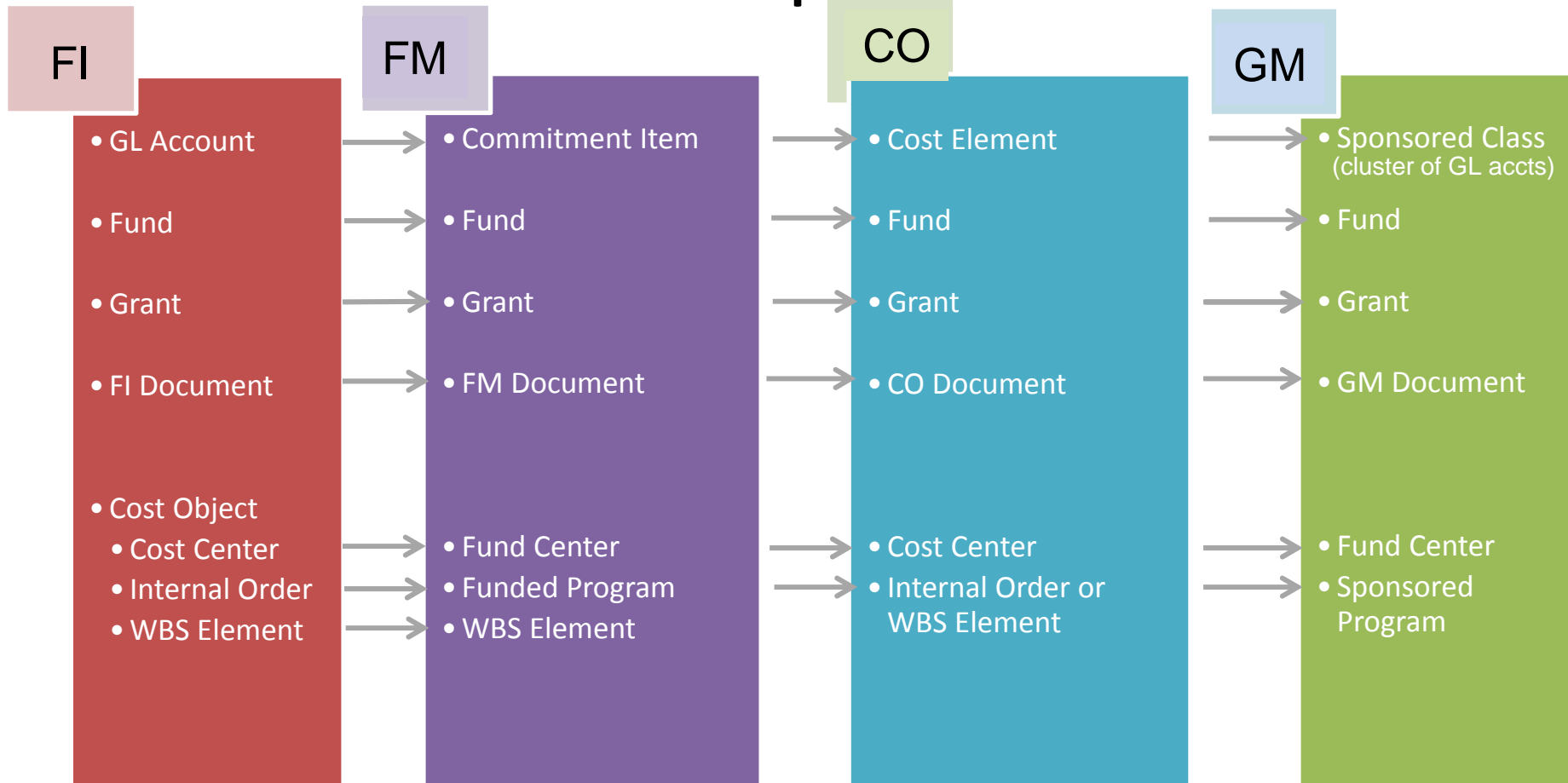




SAP Enterprise Structure

Available fields in posted transactions

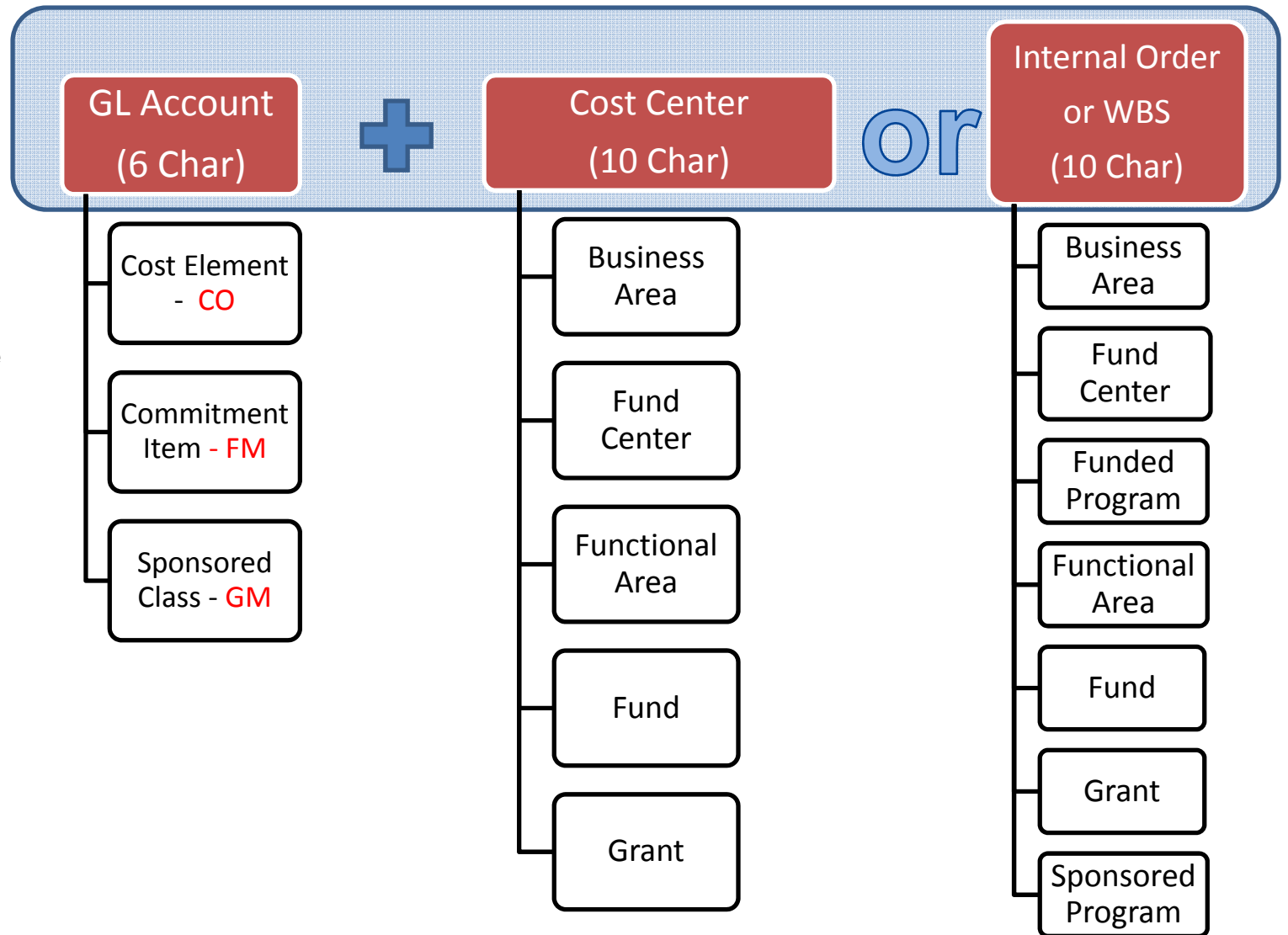


Component Reporting:			
FASB Financials			Sponsor
Institutional Financials	Diagnostic only	Budget vs Actual	Detailed P&L
		Detailed P&L	Balance Sheet

Derivation

Goal:

Derive as many objects as possible with as few keystrokes as possible for revenue and expense transactions



General Ledger Account

- General Ledger Accounts (GL Accounts)
 - Objects used for accounting transactions in the FI component and form the basis for creating balance sheets and income statements

Legacy	SAP
Object Code	GL Account

- GL Accounts may be used in combination with Business Areas and Funds for internal or external financial statements

General Ledger Account

Cost Element/Commitment Item/Sponsored Class

GL Account (6 Char)

- 1xxxxx Assets
- 2xxxxx Liabilities
- 3xxxxx Net Assets (Fund Bal)
- 4xxxxx Revenue
- 5xxxxx Expenses
- 8xxxxx Allocations

Cost Element

- 1:1 with P&L Accounts

Commitment Item

- 1:1 with P&L Accounts
- Balance Sheets will be at a rollup level
 - e.g. GL Acct 123435 = CI ZASSET

Sponsored Class

- N:1 with GL Accounts
 - i.e.
 - All Equipment GL Accts = Equipment
 - All S&W GL Accts = Salaries & Wages

Salaries & Fringe Accounts – Direct and Allocations

G/L acct	G/L Acct Long Text
500000	EXPENSE
500010	FACULTY FULL TIME
500020	FACULTY PART TIME
500030	FACULTY OTHER
500040	EXTRA COMPENSATION INSTRUCTION AND RESEA
500050	EXTRA COMPENSATION INSTRUCTION AND RESEA
500060	EXTRA COMPENSATION INSTRUCTION AND RESEA
500070	EXTRA COMPENSATION INSTRUCTION AND RESEA
500100	POST DOC EXEMPT
500110	ACADEMIC RESEARCHER EXEMPT
500120	VISITING FACULTY/FELLOW EXEMPT
500130	TEACHER EXEMPT
500140	INSTRUCTOR EXEMPT
500150	INSTRUCTOR NON EXEMPT
500160	EXTRA COMP-OTHER INSTRUCTION-STIPENDS AND AWARDS
500170	EXTRA COMP-OTHER INSTRUCTION-OVERBASE
500180	EXTRA COMP-OTHER INSTRUCTION- BONUS,OTHER
500190	EXTRA COMPENSATION INSTRUCTOR NON EXEMPT
500210	EXEMPT FULL TIME
500220	EXEMPT PART TIME



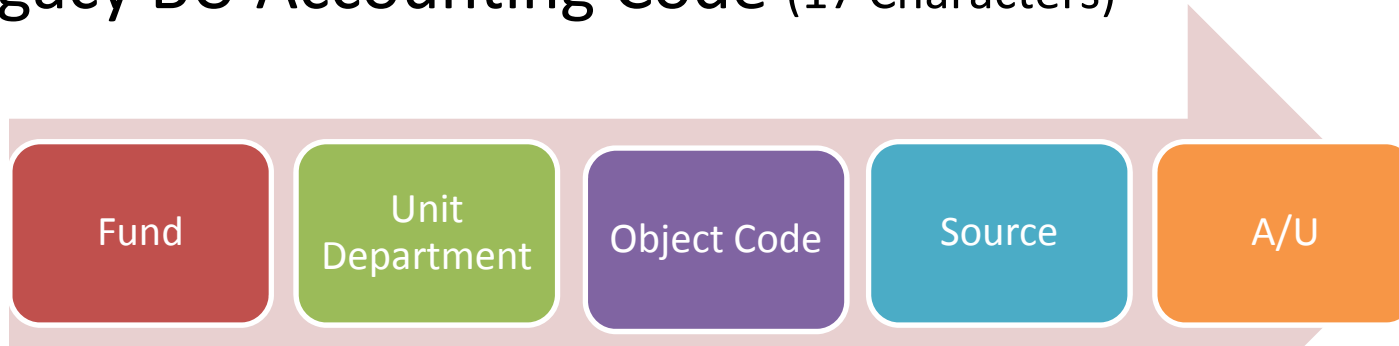
501900	MISCELLANEOUS BENEFITS
501910	CONTRACTED SERVICE-FOREIGN BENEFITS
509001	RECRUITMENT EXPENSES TRAVEL
509002	MOVING/RELOCATION EXPENSES
509003	TRAVEL ADVANCE
509004	EMPLOYEE REIMBURSEMENT
510010	SUPPLIES
510020	CONSUMABLE SUPPLIES - COFFEE/WATER SERVI

G/L acct	G/L Acct Long Text
850500	ASSESSMENTS - BUPD
850510	ASSESSMENTS - BLUE LIGHT
850600	ASSESSMENTS - BUILDING FACILITIES EXPENSE
850610	ASSESSMENTS - INDIRECT FACILITIES EXPENSE
850611	DISTRIBUTED LABOR CUSTODIAN
850612	DISTRIBUTED CUSTOMER EXPENSES
850613	DISTRIBUTED CUSTOMER SUPPLIES
850625	DISTRIBUTED EXPENSE ADMINISTRATION
850630	DISTRIBUTED EXPENSE TRADES
850640	DISTRIBUTED EXPENSE ELEVATOR
850700	ASSESSMENTS - CLINICAL TRIAL ADMIN
850701	ASSESSMENTS - CLINICAL TRIAL RECOVERY SHARE
850703	ASSESSMENTS - CLINICAL TRIAL EXPENSE
854001	INTEREST EXPENSE ALLOCATION
854003	PRINCIPAL ALLOCATION
854008	DEBT FEES
854009	SWAP SETTLEMENT PMTS
860100	F&A EXTERNAL
860101	F&A INTERNAL
860200	FRINGE ALLOCATION EXTERNAL
860201	FRINGE ALLOCATION INTERNAL
881080	ALLOCATED - NATURAL GAS
881090	ALLOCATED - ELECTRICITY
881100	ALLOCATED - FUEL
881110	ALLOCATED - WATER
881120	ALLOCATED - SEWER
881130	ALLOCATED - STEAM
890100	ISR: CATERING
890150	ISR:EVNTS&CONF CASTLE

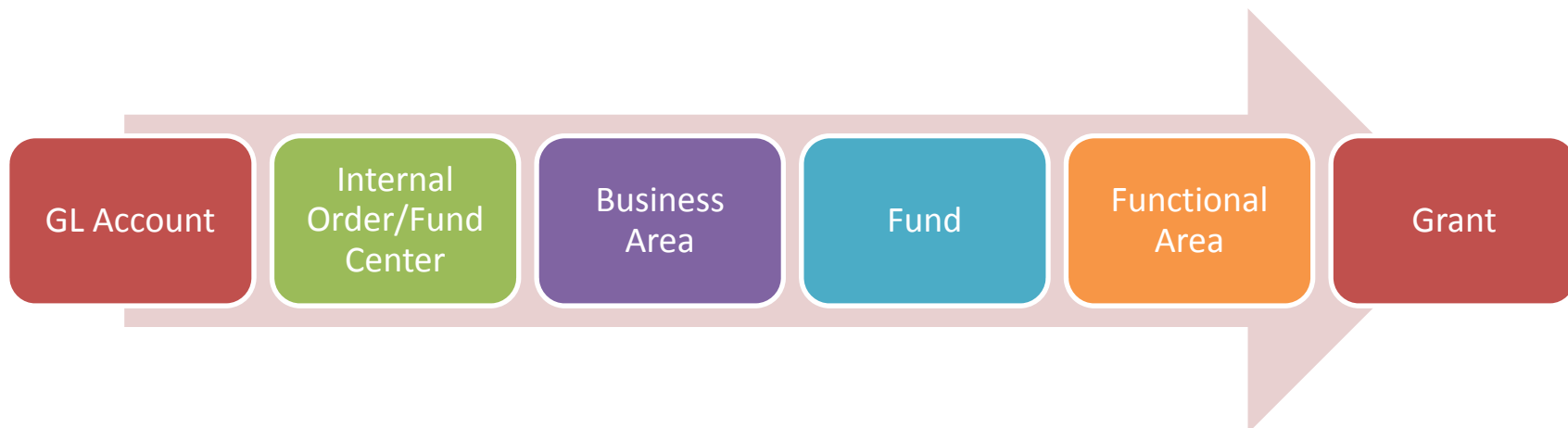
Understanding Master Data

SAP Required Components

- Legacy BU Accounting Code (17 Characters)



- SAP Accounting Code/Master Data (16 entered/26 derived)



Master Data Design

Fund

X

- Net Asset Class
- 1 – Unrestricted General
- 2 – Unrestricted Designated
- 3 – Temporarily Restricted
- 4 – Permanently Restricted

XX

- Type of fund
- 00 – General
- 20 – Endowment Principal
- 25 – Endowment Spendable
- 28 – Annuity
- 30 – Gifts
- 32 – Gifts – Building
- 35 – Gifts – Pledges
- 40 – Loans – Institutional Unrestricted
- 43 – Loans – Institutional Restricted
- 45 – Loans – Government
- 50 – Grant – Federal
- 55 – Grant – Non-Federal
- 60 – Debt
- 70 – Capital Projects
- 95 - MOA – Cost Reimbursements

XXXXXXX

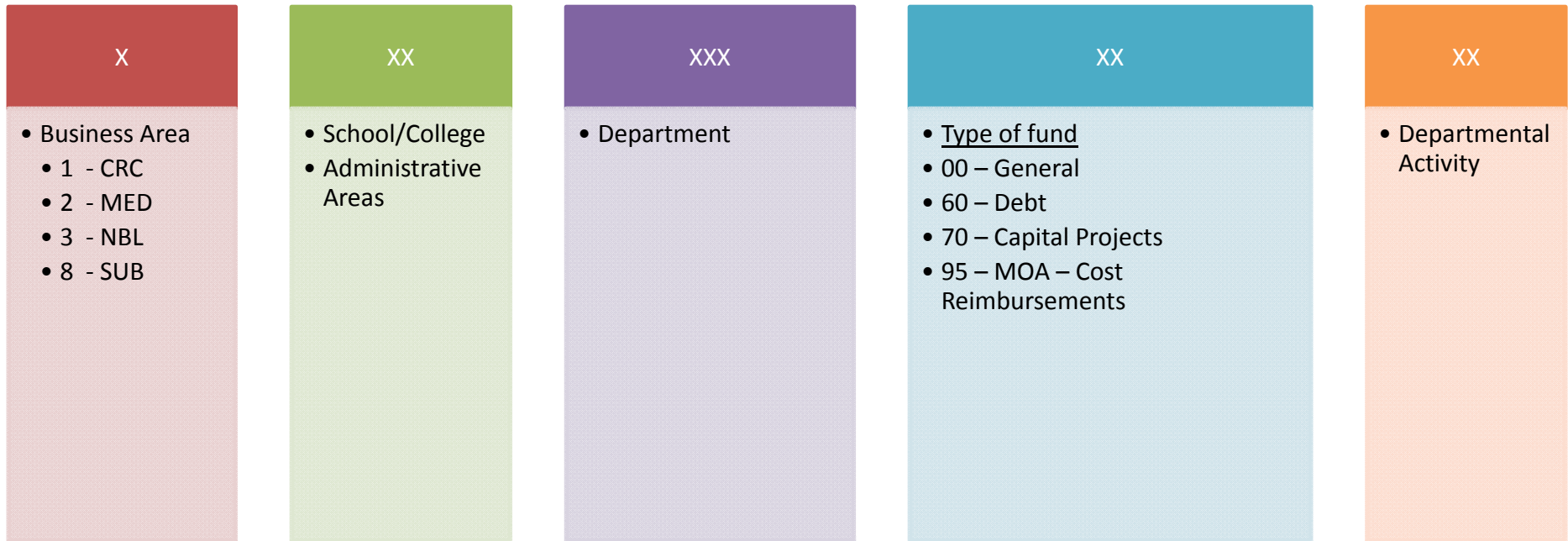
- Sequentially Numbered

Fund	Description
1000000000	Unrestricted General Fund
2300003212	Unrestricted Designated Gift – Skin Pathology Research Fund
2500000322	Unrestricted Designated Federal Grant – NIH



Master Data Design

Cost Center/Fund Center (1:1)



Cost Center/Fund Center	Description
1202000000	CRC CAS Biology – General Fund
1200450000	CRC CAS Student Services – General Fund
1202050000	CRC CAS Chemistry – General Fund
2969090000	MED Talbot Building – General Fund

Master Data Design

Internal Order/Funded Program/Sponsored Program

• IO Type

•00 – General	43 – Loans – Institutional Restricted
•05 – Work Order	
•06 – Facilities work order	45 – Loans – Government
•07 – Special Maintenance	
•09 – Designated General	50 – Grant – Federal
•20 – Endowment Principal	
•21 – Endowment Sep Invest	
•22 – Endow Investmt Mgr	54 – Grant – Federal-Fab Equip
•25 – Endowment Spendable	55 – Grant – Non-Federal
•28 – Annuity	59 – Grant – Non-Fed
•30 – Gifts	60 – Debt
•32 – Gifts – Building	
•34 – Undesignated gifts	95 – MOA – Cost Reimbursement
•35 – Gifts – Pledges	98 – Balance Sheet – Capital
•40 – Loans – Institutional UR	99 – Balance Sheet – Other

• Sequential numbering

Internal Order	Description
9090000622	XDiscr Glantz (SPH)
9300000384	Med Annual Fund (BUSM)
9250000424	Delta Dental Scholarship Fund