



Currents

The newsletter of the Boston University School of Social Work



A Note from the Editors

Welcome to *Currents*, the renamed and redesigned newsletter of the Boston University School of Social Work.

You may remember us as the *Alumni Journal*, which has been published for 18 years. With our new name, we are reflecting our dynamic, vibrant, and contemporary graduate social work program as well as our campus locations: the Boston campus on the Charles River; the Northeastern Massachusetts Program campus in Tyngsboro on the Merrimack River; and the two sites of our Southeastern Massachusetts Program in Fall River and on Cape Cod.

We hope you enjoy *Currents*. Please let us know what you think by e-mailing us at kschul@bu.edu or rilda@bu.edu.

Best wishes for the holidays!

Ken Schulman Rilda Kissel

Barbara Kondilis-Petropoulos (MSW '98, MPH '99) writes from Greece, where she relocated three years ago. Her article appears on page 10. Pictured above is a scene from the Isle of Kea.

In this issue...

Notes from the Dean **2**

Field Education News **3**

Short Takes **4**

Donors Honor Roll **7**

Alumni Association Connections **8**

Alumnus Profile **9**

Alumni/ae Update **12**

Notes from the Dean's Office

Dear Colleagues,

Greetings! I hope you are having a fine fall and enjoying your work and play in this too-busy world. I am in my third year as Dean *ad interim* and continue to enjoy this challenging role as the School moves forward with several major initiatives.

I'd like to share with you some of the information from our 2006/07 Annual Report sent to the Provost last August. Let me begin with the special accomplishments of our faculty:

Student ratings of faculty instruction were excellent.

- **Dr. Maryann Amodeo** was promoted to full professor. Much-deserved congratulations to Maryann!
- **SSW's faculty ranked 8th nationally, reflecting their outstanding productivity.** Faculty members average 3 publications per year for our 20 tenure-line faculty and 1.5 each for our 6 clinical professors (whose major roles are teaching and advising), with an average of 2.6 national conference presentations per faculty member annually. This is a lot of work by all!
- **The number of funded grants increased from 16 last year to 20 this year and the dollar amount received rose from 1.8 million to 2.1 million.** Faculty members submitted 33 applications this past year, more than ever before. Grants of over \$50,000 were received by Professors Mary Collins and Cassandra Clay (Home for Little Wanderers); Marah Curtis (Robert Wood Johnson); Lena Lundgren and Maryann Amodeo (HHS, SAMHSA); Jordana Muroff (Obsessive-Compulsive Foundation); Sunny Shin (Robert Wood Johnson); Renée Spencer (W. T. Grant Foundation); Betty Ruth (Massachusetts Department of Public Health); and myself (National Institute of Mental Health). Also, Scott Geron received substantial additional funding from Atlantic Philanthropies for the Institute for Geriatric Social Work to continue its

work in web-based training for social workers in best practices for serving elderly clients.

- **Student ratings of faculty instruction were excellent.** Average ratings for social work course content ranged from 4.4 to 4.6 out of a possible 5.0; instructor ratings ranged from 4.4 to 4.9. Our faculty should be very proud of these figures.
- **This fall we welcomed two visiting faculty members.** Professor Rachel Dekel from Bar-Ilan University in Israel is working on the effects of traumatic events in Israel. Dr. Hyemee Yoon of the Department of Child Welfare at Chungbuk National University in Korea is working on child neglect and families.

There are new developments in our curriculum and programs:

- Never content with the status quo, SSW faculty and administrators attended a day-long faculty retreat on **curriculum renewal**. The upshot is a "Think Tank" committee composed of eight faculty members and administrators who have begun to tackle the challenges of this issue and will report back in January 2008.
- SSW launched a **blended web and classroom course on Geriatric Social Work**, enrolling students from both the Charles River and Off-Campus Programs. It was well received and will serve as a model for future courses.
- SSW continued its **Puerto Rico summer study program** under the leadership of Professors Luz Lopez, Lee Staples, and Carolyn Dillon. I have it on good authority that all enjoyed this travel/study program immensely. Luz's team of graduate research students also collected data on HIV and substance use among the homeless in San Juan.
- BUSSW admitted its **first Somali student** to partner in a new program funded by Robert Wood Johnson to train Somali social workers to work in their community.
- The **PhD program** launched a highly successful welfare policy colloquium series that involved all first-year doctoral students, many faculty, and numerous area scholars as speakers. The level of scholarly discourse in this program was



Dean *ad interim* Gail Steketee

outstanding. The program is now ongoing for 2007/08.

On other fronts:

- We are extremely grateful to alumni **who increased overall giving to BUSSW** by 22 percent. This included a new scholarship fund to recognize retired Metcalf Teaching Award winner Professor Carolyn Dillon. Thanks to all who assisted us.
- The development administrators and I held SSW's first **Dean's Advisory Board** meeting in June, beginning with a lunch and meeting with BU President Bob Brown that generated several excellent strategies for moving forward to meet the School's fiscal development needs.
- SSW's **new state-of-the-art website** was launched this fall and represents hundreds of hours of work by faculty, staff, and BU's Office of New Media.

SSW's new state-of-the-art website was launched this fall.

- Professor Betty Ruth took the reins of the **Professional Education Programs (PEP)** from former director Candace Saunders, who had a highly successful year training social workers on a wide variety of clinical topics.

Some challenges remain:

- While SSW's **technological improvements** were outstanding this year under

Dean's Office,
continued on page 15

Field Education Department Engaged in Active Year

A NUMBER of field education activities are under way for the 2007/2008 academic year, highlighting the Field Education Department's continued commitment to innovative and high-quality educational experiences for students and ongoing support for field instructors.

Boston GEM Consortium

The Boston GEM Consortium will enter its seventh academic year as a placement model and its second year with funding from the John A. Hartford Foundation. Boston University School of Social Work is one of 35 schools participating in this unique Practicum Partnership Program (PPP), a national initiative over the next eight years to educate more than 1,000 social workers on aging. The project is administered through the New York Academy of Medicine's Social Work Leadership Institute and funds student stipends for three years.

This year the Boston GEM Consortium is funding nine students with stipends of \$5,000 each. The field practicum component of the project is designed to give each student a primary placement in one agency and an enrichment placement in a second setting. A total of ten agencies are now members of the consortium: Boston University Geriatric Services, Boston Housing Authority, The Boston Center, Boston University School of Social Work Compulsive Hoarding Project, Brookline Council on Aging, HEARTH (Helping Elders at Risk through Homes), Hale Barnard Services for Older People, Jewish Community Housing for the Elderly, Kit

Clark Senior Services, and Uphams Corner Elder Service Plan. A monthly integrative seminar that focuses on topics related to geriatric social work will bring together the Boston GEM Consortium interns, their field instructors, and project faculty.

Integrative Field Seminar

All students in foundation year internships continue to participate in the Integrative Field Seminar that meets throughout the year. Taught by Field Education Department staff, this course is designed to enhance field education experiences by focusing on such topics as learning tools in the field, professional development, the use of supervision, the organizational context of practice, ethical and legal issues in practice, and multicultural dimensions of urban social work practice.

Students in both the foundation and advanced placements are creating portfolios—in which evidence of learning in the field is compiled—that will be used to help students plan and interview for their advanced placements and for postgraduate employment.

Group Work Workshops

In addition to the Seminar for New Field Instructors being offered at the Charles River Campus and at the School's off-campus sites in Fall River, Cape Cod, and Tyngsboro, the department again is sponsoring two workshops on group work field

instruction taught by BUSSW group work faculty member Linda Schiller.

The workshops are designed for field instructors who are already supervising interns in group work assignments as well as for those interested in developing group work assignments for their students. This series is open to field instructors from all of the New England graduate schools of social work through the New England Consortium of Field Education Directors.

Advisory Committees

The Field Education Advisory Committees at the Charles River Campus and at the Tyngsboro and Fall River campuses are meeting regularly during the academic year to focus on trends in practice, student preparedness for practice, and the school-agency partnership. The committees are working on specific feedback concerning the new Field Education learning objectives and the evaluation tool, both of which are being revised to more accurately reflect the knowledge and skills students are gaining in the field.

Step UP Program Participation

At the University-wide level, the Field Education Department is exploring the possibility of participating in the Step UP program initiated last year by Boston Mayor Thomas M. Menino. Step UP pairs five local universities with select Boston public schools to provide resources for students and teachers.

A number of Boston University schools and programs are working with Boston English High School and the William Trotter Elementary School; the SSW Field Education Department has offered to support the students and families through internships at both schools.

Alumni, students, and field instructors are invited to visit the Field Education Department web page at www.bu.edu/ssw/fielded/ for more information about the field education program, including staff and upcoming events. •

GEM administrators, field instructors, and students listen to an integrative seminar presentation by Daniel Oates, MD, of BU Geriatric Services, on "Health Literacy with Older Adults."



Short Takes

New PEP Director Diversifying Offerings

Boston University School of Social Work's Professional Education Programs (PEP) has a long history of providing continuing professional development opportunities to New England social workers. Each year, more than 2,000 social workers and allied health professionals attend one of our many workshops, institutes, lectures, or certificate programs.

Under the leadership of new Director Betty J. Ruth, Professional Education Programs will continue to offer high-quality professional development. The following themes reflect some of Ruth's interests and goals:

- A stronger understanding of the professional development needs of constituents via needs assessment to ensure that program planning reflects ongoing learning needs;
- A focus on competency and skills-based training and program evaluation so that PEP knows "what works" in terms of continuing professional education;
- A commitment to diverse types of training (e.g., agency-based, online, hybrid, team-taught, transdisciplinary) reflecting the different learning needs of 21st-century social work and allied mental health professionals;
- An appreciation of the holistic learning needs for all domains of social work including macro, clinical, policy, transdisciplinary, and nontraditional areas of practice;
- An approach that includes the integration of scientific research into practice; and
- An orientation toward professional development that goes beyond "CEU" mentality and embraces the need for social workers to continue acquiring knowledge and skills over the course of a career.

"It is clear that our PEP Program, with its outstanding faculty, trainers, and alumni, has over the years provided a 'home' for learning well beyond the MSW," says Ruth. "But as always, there are new challenges. Social work in the 21st century faces many demands: increased globalization, an aging population, pervasive chronic diseases and

health disparities, and ever-growing inequalities, to name a few.

"PEP has a critical role to play in helping to address these challenges by providing new and time-tested methods of training and professional education to enhance skills and develop leadership abilities in a caring and experienced learning community."

PEP's Fall Series featured thirty workshops on a variety of practice topics and three certificate programs. Plans are under way for the Spring Series, which will include a study travel program to Costa Rica, suicide prevention, homelessness, and other topical offerings.

"Program evaluation of PEP is an important aspect of our planning," explains Ruth. "To this end, we invite completion of a short survey that will help us establish a better understanding of alumni needs for advanced professional training." To complete this survey—which includes an opportunity to win a free PEP course—visit www.bu.edu/ssw/continue.html.

In addition to her role as PEP Director, Ruth is a clinical associate professor and directs the MSW/MPH Program and the Certificate in Clinical Social Work and Behavioral Medicine.

For more information on PEP, please visit www.bu.edu/ssw/continue.html, send an e-mail to pepssw@bu.edu, or call us at 617-353-3756.

BUSSW Active in Fall Conferences

The School's faculty, doctoral and master's students, and graduates were very active in several conferences this fall.

Council on Social Work Education Annual Program Meeting (CSWE APM)

October 26 to 28, San Francisco

- **Associate Dean Ruth Freedman:** "Healthcare Decision-Making by Adults with Intellectual Disabilities: Ethical and Social Work Perspectives"
- **Professor Mary Collins** (with Paul Stuart, Lorraine Gutierrez, Johnnie Hamilton-Mason and Michie Hesselbrock): "Doctoral Education and Unification: Potential Costs and Benefits"
- **Professor Scott Miyake Geron** (with Nancy Hooyman, Holly Nelson-Becker, Joann Damon Rodriguez, and Len Kaye): "Preparing for the Aging Boom: A Model of Workforce Development" and (with **alumna Ali Conway**): "Social Work and Elearning: Challenges, Opportunities, and



Janice Furlong, BUSSW Clinical Associate Professor and Faculty Advisor and Training Director for Wayside Youth and Family Support Network, presents a PEP workshop on "Differential Diagnoses of Adults."

User Reactions Curriculum and Administrative Workshop"

- **Professor Betty J. Ruth** (with **alumnae Christina Bethke and Jamie Wyatt**): "Public Health Social Work: Findings from a National Conference"
 - **Professor Lee Staples** (with **alumna Carly Burton**): "Journey to Justice: An Immigrant Rights Coalition in the Burgeoning Immigration Movement" Professor Staples also held a "Meet the Authors" session with **Professor Melvin Delgado** for their new book, *Youth-Led Community Organizing: Theory and Action*.
 - **PhD student Anna Rosales** (with Marilyn K. Potts and Nancy Meyer-Adams): "Educational Outcomes Assessment from Conceptualization to Use of Results"
- The School also had an exhibit booth and hosted a reception at the CSWE APM.
- ### American Public Health Association Annual Meeting
- November 3 to 7, Washington, D.C.
- **Professor Lena Lundgren** (with **PhD student Therese Fitzgerald, MSW/MPH student Angela Walter, and alumna Catherine Oettinger**): "Methadone Maintenance Treatment (MMT) Utilization Among Opiate-Dependent Pregnant Women: A Synthesis of Findings from Three Research Studies"
 - **Professor Luz Lopez** (with **Professor Lundgren and PhD students Therese Fitzgerald and Lisa Zerden**): "Differences in HIV risk behaviors and Health Status

between Puerto Rican Injection Drug Users Residing on the Island and the United States Mainland”

- **Professor Hyeouk Chris Hahm** (with Kristina Wong and Alexander Ozonoff): “The Association Between Risky Sexual Behaviors and HIV/STIs Testing Behaviors among Asian Americans”
- **Professor Hyeouk Chris Hahm** (with Alexander Ozonoff and **PhD students Lisa Zerden** and **Alvin Lee**): “Longitudinal Predictors of HIV/Sexually Transmitted Infections (STIs): Gender, Depression & Substance Use”

Association for Medical Education and Research in Substance Abuse (AMERSA) Annual Conference

November 8 to 10, Washington, D.C.

- **Professor Maryann Amodeo**: Poster session on her research on women from alcoholic families
- **Professor Luz Lopez** (with **Professor Lundgren** and **PhD students Therese Fitzgerald** and **Lisa Zerden**): “Place of Residence Matters for Puerto Rican Injection Drug Users in Massachusetts and Puerto Rico”

Association for Behavioral and Cognitive Therapies Annual Convention

November 16 to 18, Philadelphia

- **Dean ad interim Gail Steketee** (with Randy Frost): “Buried in Treasures: Treatment for Compulsive Hoarding”
- **Assistant Professor Jordana Muroff** (with **Dean ad interim Gail Steketee**, Jessica Rasmussen, Amanda Gibson, Randy Frost, and David Tolin): “Group CBT for Compulsive Hoarding”
- **Dean ad interim Gail Steketee** (with **Adjunct Assistant Professor Cristina Sorrentino**, Randy Frost, David Tolin, Jessica Rasmussen, Amanda Gibson, Sarah Carlson, and Robert Brady): “CBT

for Compulsive Hoarding: Results from a Controlled Trial”

- **Dean ad interim Gail Steketee** (with Randy Frost and David Tolin): “Enhancing Motivation for Treatment in Compulsive Hoarding”

The Gerontological Society of America Annual Meeting

November 16 to 20, San Francisco

- **Professor Scott Miyake Geron** (with **Caitlin Ryan** and **Bronwyn Keefe**, both of the School’s Institute for Geriatric Social Work): “Agency-based Online Training Program Improves Practice Competencies and Promotes Workforce Development” and “Developing Leadership in Mental Health and Aging: Raising Competencies within Systems of Care.” Professor Geron also participated in a symposium on Geriatric Leadership Competency.
- **Professor Judith Gonyea** (with **Assistant Professor Ruth Paris** and **PhD student Lisa Zerden**): “Adult Daughters and Aging Mothers: The Experience of Guilt and Caregiver Burden.” Professor Gonyea was also a discussant for two symposia, “Having to Work After 55: Prospects for the Poor and Near Poor” and “The Development of a Caregiver Assessment Tool: Translating Research into Practice.”
- **Professor Robert B. Hudson**: “Reframing the Vital Center for an Aging Society: View from Academe.” Professor Hudson was also a discussant for the symposium, “A New Deal and a Great Society for Older Americans: Have Promises Been Kept?”

Zero to Three National Training Institute

November 30 to December 2, Orlando

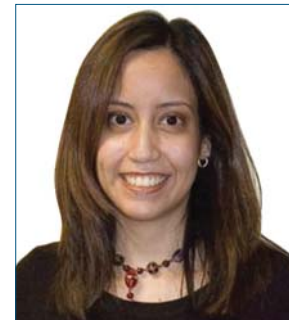
- **Professor Ruth Paris** (with M. Katherine Weinberg and **MSW/MPH student Rendell Bolton**): Poster presentation on “Mood Disorders and Mother-Infant

Interactions: Early Findings from a Study of a Home-based Therapy”

Changing Faces, Changing Places

There have been several faculty and staff changes in recent months. **Maryann Amodeo** has been promoted to full Professor and **Janice Furlong** has been promoted to Clinical Associate Professor. SSW Director of Development **Nadia Chamblin-Foster** ('97) has left this position to assume her new role as Manager of Community Outreach at Boston City Hospital. **Patty Frasso**, who has been the Administrative Assistant in the Field Education Department, is now the Assistant to the Dean, replacing **Linda Cavallo-Murphy**, who departed SSW in November to assume a new position at Bentley College. **Linda Harris** has left her position of Manager of Admissions and Web Development to work in a local health-related agency.

Recent Graduate Shines as Hospital Social Worker



Frances Colón’s job description includes terms like “social work” and “therapy,” but that doesn’t cover all that her work at Children’s Hospital Boston entails. On any given day, she might be found at a local high school advising students through the Children’s Hospital Neighborhood Partnership (CHNP) Program, conducting research on the local Latino community or counseling HIV-positive youth through Children’s Boston Happens program.

Colón, originally from Long Island, began working here in 2003, while in the second year of her Master’s program at Boston University. Earlier, she’d completed an internship with the Latino Team in Children’s Psychiatry Department. Guatemalan and Puerto Rican in heritage, she’s passionate about working with the local Latino population in a therapeutic setting.

BUSSW Assistant Professor Hyeouk Chris Hahm presents on “Predictors of STDs among Asian and Pacific Islander (API) Young Adults” as part of the School’s Social Welfare Analysis Colloquium series. For more information on the series, please visit www.bu.edu/ssw/research/social/index.shtml.



"I'm very appreciative of my parents' gift of teaching me Spanish and teaching me about the Latino culture," she says. "That's really helped me connect with Latino patients during therapy sessions." Colón also works with ethnically diverse children, adolescents and parents at Fenway High School, where she holds therapy sessions with the students.

While Colón certainly wears many hats, she's especially passionate about her Boston Happens work, where she provides individual, group and crisis therapy services to HIV positive youth and victims of sexual assault. "In the program, they're able to be themselves and feel less stigmatized," she says. "They don't have to carry a heavy secret."

Clearly, many members think so, too. One teen sums up how many feel, saying, "I have a lot of friends in school, but I

don't feel close to them—they're not family like my friends in group."

Colón's current research project, which she's working on with William Beardslee, MD, academic chairman of the Department of Psychiatry, and the Latino Team, is designed to benefit the Latino population—both here and overseas. Called Adapting and Piloting the Prevention Intervention Project for Families with Depression for a Latino Population, it involves collecting data throughout a series of sessions with Latino children who have a depressed parent. Colón appreciates the opportunity to collect useful research data and also, when needed, intervene and help the families. "I like being in the community and providing services to families who normally wouldn't have them," she says.

*Reprinted by permission from
Boston Children's Hospital News*



The Akbadja Percussion Ensemble performed in the School's student lounge as part of a Racism Faculty Brown Bag Lunch in October. The group performed traditional Vodou and Folkloric rhythms and songs from Haiti.

Alumnae Appointed to Governor's Commonwealth Readiness Project

BUSSW alumnae Jackie Jenkins-Scott ('73) and Dennie Butler-MacKay ('89) have been appointed to positions with Massachusetts Governor Deval Patrick's Commonwealth Readiness Project to improve public education. Jenkins-Scott, who is President of Wheelock College, is a Co-chair of the Project's Leadership Council and Butler-MacKay, President and CEO of Leaders of Tomorrow, Inc., has been appointed to the Whole Child Subcommittee.

Visiting Scholars Join BUSSW Community

The School of Social Work welcomed three visiting scholars for the 2007/08 academic year: Dr. Rachel Dekel, Dr. Hyemee Yoon, and Finn Laursen.

Dekel is a social worker and a faculty member at the School of Social Work at Bar-Ilan University in Israel. During the last decade she has studied and worked in the area of coping with traumatic events, dealing with both direct victims and their families in Israel. Her research explores the consequences of traumatic events, their functional and emotional costs, and how to help direct and secondary victims of trauma.

Yoon is a Professor in the Department of Child Welfare at Chungbuk National University in Korea. Her major research areas are social work with children and families including child abuse and neglect, adolescents at risk, and burnout among social workers. Currently, she is chief edi-

Short Takes,
continued on page 15

Named Scholarships and Prizes

Congratulations to the following students who have been awarded special BUSSW named scholarships, stipends, and prizes for 2007/08.

All are MSW students unless otherwise noted.

Wendy Carol Byers Memorial Scholarship

Randi Donniss

Mary Louise Dillon Scholarship

Evonne Yang

Annette Schaffer Eskind Scholarship

Bonita Ciambotti, Lisa Cremer

Louise and Anna B. Frye Multicultural Education Scholarship

Sarah Tassone

Frances H. Gelber Scholarship

Mary Ciccarone

Carolyn Jacobs Prize

Misty Heppler

Hubie Jones Urban Service Scholarship

Christopher Fortunato, Abigail Ross

Margaret D. Lakis Scholarship

Emily Blonder

Josephine Lambert Scholarship

Tatiana Miller

Barbara Locke Memorial Scholarship

Lucy Darragh, Katherine Pratt

Louis Lowy Scholarship

Ilana Lorge, Peggy Lucien, Raymond McLaughlin, Brynn Thompson

Thomas D. Mackey III Memorial Scholarship

Rachel Weidenfeld

Joseph Meisels Book Award

Kalina Black, Karly David, Ollire Dunn, Kerri Ferraris, Karen Furia, Loula Kariotis, Alyson MacKenzie, Alana Oszamian, William Patterson, Melanie Reis

Ina L. Morgan Scholarship

Sarah Christensen, Margie Colon, Colleen Considine

Rosemary Pazol Mundell Memorial Scholarship

Diane Gardner

Naomi Osterman Scholarship

Kristen Picardi

Angelina Aliberti Ruggie Scholarship

Deborah Shannon-Chelman

Sybil M. Shapiro Scholarship

Eden Haile

Jane Stewart Memorial Prize

Lauren Witman

Singer Family Foundation Prize

Brooke Lehmitz

Holly Margolin Zwerling Scholarship

Jessica Davine

Catherine Bittenwieser Field Stipends

Sara Becker, Jennifer Dibble, Lacey Hochman, Jennifer McCarthy, Ailish McShea, Amanda Nisewaner, Heather Simpson

2007 COMMENCEMENT PRIZES

Saul and David Bernstein Prize

Kate Lipman and Perry Underwood

Carl D'Ettore Prize

Kari Sasportas and Lisa Souza

Sarah Lange Prize for Social Change

Amy Graham and Angela Maina

Herbert S. Strean Memorial Prize

Kate Barnett and Lindsay Kamen

Donors Honor Roll: Lifetime Giving

Numerous individual, corporate, and foundation gifts and grants have been made to the School since concerted fundraising efforts began in 1989; this support was gratefully received from alumni, faculty, staff, students, friends, foundations, and corporations. A number of donations were

matched by employers. We are very pleased to publicly acknowledge the *cumulative giving* of donors who gave \$5,000 or more. We have listed all contributors unless anonymity was requested. If we have inadvertently omitted a donor, misspelled a name, or listed an incorrect class

year, please accept our apologies and let us know by calling Rilda Kissel at 617-353-9675 or 800-735-ALUM (both voice/TTY) or by sending an e-mail to rilda@bu.edu.

Many thanks to all our contributors!

\$1,000,000 and higher

The Atlantic Philanthropies, Inc.
W. K. Kellogg Foundation

\$500,000-\$999,999

Alfred P. Sloan Foundation
The Robert Wood Johnson Foundation

\$100,000-\$499,999

Anonymous (3)
The Estate of Barbara L. Locke ('39)
Christine L. Chase ('51)
Annette Schaffer Eskind ('51)
The Estate of Naomi Osterman ('53)
Corinne Carr Nettleton ('55)
Frances G. Frank ('74)
Steve Tirado ('82)
Adcare Educational Institute, Inc.
Carlisle Services
Greater Boston Council on Alcoholism, Inc.
John A. Hartford Foundation
Mary Louise Dillon Irrevocable Trust
New England Telephone Company
Outward Bound
Project Rap, Inc.
Stone-Wellesley Center for Women
The Boston Foundation
The Retirement Research Foundation
Westat, Inc.
William T. Grant Foundation

\$50,000-\$99,999

Anonymous (1)
Grace P. Ford Trust ('53)
Donald R. McCaul ('58)
Catherine F. Bittenwieser ('63)
Naomi M. Stanhaus ('70)
Maki Amano (friend)
Herbert J. Hurwitz (friend)
AARP Andrus Foundation
Barrett Family Foundation
Boston Public Housing Commission
Jewish Family & Children's Service
The Carlisle Foundation
Theodore Edson Parker Foundation

\$10,000-\$49,999

Gertrude L. Sullivan ('37)
The Estate of Beth R. Hoffman ('39)
Joseph J. Parnicky ('42)
The Estate of Mable J. Dean ('43)
The Estate of Olive M. Walton ('47)

The Estate of Pearl M. Steinmetz ('48)
Leonard Serkess ('49)
Nancy W. Bruley ('50)
The Willette P. McNary Trust ('50)
The Estate of Frances H. Gelber ('54 and former SSW administrator)
Marcia Strean ('54)
The Estate of Mary A. Clappison ('61)
Susan J. Bellinger ('63)
Richard M. Ryan, Jr. ('64)
Karen A. Gould ('68)
Linda H. Singer ('69)
John E. Drew ('70)
Susan B. Kaplan ('74)
Nancy R. Karp ('78)
Dorothy J. Bergold ('81)
Barbara P. Shaffer ('81)
Sarah Brody Epstein ('82)
Elissa L. Freud ('83)
Hope Feinberg Schroy ('96)
Saul B. Bernstein (Professor Emeritus)
Louise A. Frey (Professor Emerita)
Wilma Peebles-Wilkins (Dean Emerita)
Leonard Kaplan, Esq. (friend)
Barbara S. Keller (friend)
Regina B. Mackey (friend)
Tiron Pechet (friend)
Jesse B. Shapiro (friend)
Margaret D. Philbrick (friend)
Melvyn R. Regal (friend)
Florabel L. Stevens (friend)
Mary Ann Stewart (friend)
John P. Thomson (friend)
Alzheimer's Association
American Cancer Society
American Society on Aging
Andrus Foundation
Angio-Medical Corporation
Anna B. Stearns Charitable Foundation, Inc.
Arthritis Foundation
Bank of Boston
BlueCross BlueShield of Massachusetts
Charles A. Dana Foundation
Child Survival Task Force
Combined Jewish Philanthropies COPE
Crittenton Hastings House
Elias & Bertha Fife Foundation
Family Service Association
Farnsworth Trust

Fidelity Investments Charitable Gift Fund
Ford Foundation
General Electric Foundation
Godfrey M. Hyams Trust
Health & Addictions Research, Inc.
Highpoint
International Business Machines Corporation
Jessie B. Cox Charitable Trust
John D. and Catherine T. MacArthur Foundation
Kidney Foundation of Massachusetts, Inc.
Kit Clark Senior Services
Leukemia Society of America
Lois & Samuel Silberman Foundation
Mabel Burchard Fischer Grant Foundation
Mabel Louise Riley Foundation
Massachusetts General Hospital
Maurice & Carol Feinberg Family Foundation, Inc.
Maurice Pechet Foundation
Medical Fund
Obsessive Compulsive Foundation
Owens Corning Fiberglass Corporation
Polaroid Foundation, Inc.
Ramlose Foundation
Raytheon Charitable Gift Fund
Schneider Association
Shawmut Charitable Foundation
Sherwood Forest Fund
Spencer Foundation
Sun Microsystems, Inc.
The Aspen Institute
The Boston Globe Foundation
The Estate of Hansi Oppenheimer
The Medical Foundation, Inc.
The United Methodist Church
U C Foundation, Inc.
U S West, Inc.
Wampanoag Tribe
Welch & Forbes
Whitaker Health-Science Foundation
Woods Hole Oceanographic Institution
Work/Family Directions, Inc.

\$5,000-\$9,999

The Estate of Margaret Z. Bryan ('41)
Elmer J. Bryan Trust ('41)
Muriel Bloch Kolner Sieh ('45)
Golda M. Edinburg ('46)

Louis Lowy ('51)
Ethel G. Ackley ('54)
Paula L. Sidman ('66)
Mary Urban-Keary ('67)
George R. Bulger ('67)
Deborah C. Glasser ('68)
Lois Levinsky ('74, former faculty)
Harriet W. Schley ('77)
Barbara Fish Lee ('84)
Carole Slipowitz ('84)
Susan Garland Wood ('84)
Tatiana Dierwechter ('87)
Rhonda S. Zinner ('88)
Jo Ann Kumins ('89)
Carol L. Thrane ('90)
Sarah B. Lange ('93)
The Estate of Ina I. Morgan (former faculty)
The Estate of Jeane Murphy (former faculty)
Andrew S. Dibner (friend)
Kyle McKinney (friend)
Madeline M. Lindsay (friend)
Caleb Loring, Jr. (friend)
Maureen E. Mackey (friend)
Daniel E. Rothenberg (friend)
Paul Singer (friend)
Roger Wirt (friend)
Leonard J. Zwierling (friend)
Abbot & Dorothy H. Stevens Foundation
Alcoa Foundation
Boys & Girls Club of Boston
Carl & Ruth Shapiro Family Foundation
Charles H. Hood Foundation
David & Yetta Moeser Trust
FLB Foundation Ltd.
General Cinema Corporation
Golden Care, Inc.
Justice Resource Institute
Leonard Serkess Revocable Trust
Lifeline Systems, Inc.
Loring Wolcott & Coolidge
March of Dimes National Foundation
Mutual of New York Foundation
MWC Foundation, Inc.
State Street Bank Company
The Morris S. and Florence H. Bender Foundation
The Riverside Church
The Westco Corporation
United South End Settlements
United Way of Massachusetts

Alumni Association Connections

by Nanci Ginty Butler ('01), President, BUSSW Alumni Association Board

GREETINGS, fellow alumni and friends of the School of Social Work!

As the holiday season and winter approach, I hope this edition of the newly named *Currents* finds you happy and well!

As I'm sure you can glean from reading this edition of *Currents*, the School is involved in another productive and successful academic year. Our alma mater continues to thrive under the leadership of Dean *ad interim* Gail Steketee, now in her third year in this capacity. She has demonstrated important leadership and enabled the School's continued successes. The search for a new dean is ongoing, and—as you know—it is a priority of the Alumni Association Board that alumni be involved in this process. I believe that in order for the School to remain strong and successful, we need a united effort among our new dean, the faculty, alumni, and students.

Speaking of faculty, did you know that ours currently ranks eighth in the nation among schools of social work by *The Chronicle of Higher Education* in terms of the number of citations credited to them in scholarly publications? This follows last spring's report that BUSSW faculty also ranked eighth in terms of productivity among schools of social work with doctoral programs. On the research front, our faculty continues to win national grants to con-



BUSSW Assistant Professor Luz Lopez and study-travel participants Melissa Sparks (MSW '07, MPH '08), Kristen Pendergrass ('08), and Katie Pratt ('08) (seated from left) present on The Puerto Rican Experience for the Alumni Association's First Thursday Program in November.

duct groundbreaking, innovative research on topics ranging from suicide prevention education in social work to the effects of incarceration on family members.

The Alumni Association continues to keep graduates connected with the School. In that regard, we are excited to have established our first overseas alumni network (formerly called chapters). Barbara Kondilis-Petropoulos, a MSW/MPH graduate, is serving as our European representative in Athens, Greece. We now have eighteen alumni networks covering 33 states, the District of Columbia, Eastern Canada, and Europe.

This fall, we surveyed all of our Alumni Board members to take stock of how we are

doing in adhering to our mission, how we view our current structure, and whether there are any additional activities on which we should focus. The board's Steering Committee is actively working to compile the results and develop the next steps. Our First Thursday Program in November brought alumni and students together to hear about the School's Puerto Rican Experience course, and alumni networks around the country have been busy hosting BUSSW on Wheels programs and contacting prospective students to help get them acquainted with the School.

Finally, BUSSW is brimming with opportunities for you to stay involved with and connected to the School, from simply introducing yourself as a BUSSW alumna/us among colleagues, to assisting with student recruitment, nominating a fellow graduate for an Alumni Association Award, serving as a career information resource for new graduates, attending a local event, or supporting fundraising efforts. We know that BUSSW is already a fantastic place to get a social work education; with your participation and support, our alma mater is poised to become better than ever. I encourage you to consider giving back to the School in any way that you can.

I wish you all the best during the upcoming holiday season and in the new year! •

2007/2008 BUSSW Alumni Association Board Members

Jennifer Ahljianian ('91) Exeter, Rhode Island	Kelly Crowley ('03) Cary, North Carolina	Mariela Farrenkopf ('00) Portland, Oregon	Dallia Lavi ('01) Los Angeles, California	Jennifer Sterling Sentlinger ('01) South San Francisco, California
Patricia Beauchemin ('86) Warwick, Rhode Island	Sharon Cruz ('00) Rochester, Massachusetts	Ian Forslund ('92) Austin, Texas	Kayniee Lopez ('97) San Francisco, California	Stephanie Stidham ('01) Rancho Santa Margarita, California
Betty Bernier ('97) Steering Committee Member Hyde Park, Massachusetts	Nickie Diggs ('01) Laurel, Maryland	Nanci Ginty Butler ('01) President/ Steering Committee Member Waban, Massachusetts	Rebecca Mulhern ('02) Brooklyn, New York	Elizabeth Stookey Sunde ('94) Wildier, Vermont
Christina Bethke ('06) Cambridge, Massachusetts	Lesley Dixon ('97) Bloomfield, New Jersey	Mark Goodwin ('87) The Bronx, New York	Doreen Reis ('01) Hamden, Connecticut	Sharon Ash Tancredi ('99) Scarborough, Maine
Jenn Brandel ('98) Jamaica Plain, Massachusetts	Noelle Dimitri ('00) Steering Committee Member Dorchester, Massachusetts	Sophia Henry ('01) Atlanta, Georgia	Brooke Rufo Hill ('03) Seattle, Washington	Lisa Thakker ('99) Oak Lawn, Illinois
Sukhi Bhubra ('97) Toronto, Ontario, Canada	Catherine Ehrhardt ('03) Secretary/Steering Committee Member Boston, Massachusetts	Kami Kato ('98) Mililani, Hawaii	Deidra Somerville ('95) South Holland, Illinois	Michelle Thesing ('92) Tucker, Georgia
Pamela Charney ('91) Ft. Lauderdale, Florida		Barbara Kondilis-Petropoulos ('98) Themidos, Glyfada, Greece	Taffy Smith ('05) Greenfield, Massachusetts	Jamie Wyatt ('05) Brookline, Massachusetts



Tfawa Haynes ('07)

New Graduate Tfawa Haynes Brings Creative Spirit to the Field

by Kalina Crystal Black ('09)

ONLY MONTHS from graduation, Tfawa Haynes, a clinical social worker, has already hit the ground running. Haynes holds two positions with the Brookline Community Mental Health Center, where his responsibilities range from mentoring at-risk youth to counseling and advising survivors of homeless families.

Haynes reflects on how the most telling characteristics of these populations are their resiliency and personal drive to continue despite many of the obstacles they have confronted in the past and continue to face. He views his work as conveying to his clients that he sees these qualities in them.

"The most rewarding—as well as challenging—aspect of my work is helping clients see the strengths and beauty within themselves," Haynes says. He believes that "only then will clients—particularly at-risk youth—feel compelled to return to sessions and develop a positive and proactive outlook on their lives."

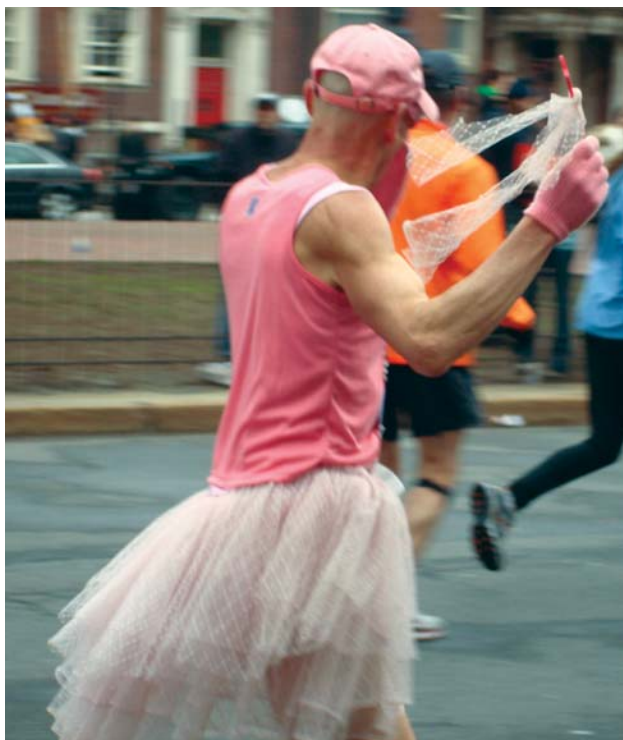
Jamaica to New York

Born in Jamaica, Haynes moved to New York City at age ten. He notes that his Jamaican heritage has become central to his cultural and personal identity; his experiences as a Jamaican man of African descent living in the United States motivated him to pursue a career in social work. His personal and

"The most rewarding—as well as challenging—aspect of my work is helping clients see the strengths and beauty within themselves."

academic interests have given Haynes the creative space to reflect on his Jamaican and American cultures, both of which

Explains Tfawa, "This is a picture of a man running in this year's Boston Marathon. He is dressed in all pink, down to his socks, sneakers, and wand. I love the character that he brought to the race. His outfit definitely commanded attention; the crowd greeted him with a very loud cheer as he ran by."



Old woman sitting alone with her bags at South Station

"If you look closely," writes Tfawa, "you can see this woman trying to figure out how to use her cell phone. I like the mixture of old and new—old being the woman's age and new, the cell phone technology."

continue to bring a multicultural perspective to his work.

More recently, Haynes has developed a passion for photography; he believes that photographs are complex and often open to multiple interpretations. Haynes believes there are parallels between photography and social work: "When seeing a client," he explains, "there are multiple interpretations and understandings to the client's circumstance. Therefore, it is up to both artist and social worker to convey to the world the complexity of the human experience."

Haynes hopes to develop a photography project on the populations Brookline Community Mental Health Center serves in order to share their stories and resiliency with the world and to help them *see themselves* as remarkable survivors.

The BUSSW Experience

While at the School of Social Work, Haynes found that the faculty's dynamic energy served as his launching pad to a commitment and passion for social work. He recalls his most influential lesson was seeing a relationship with a client as a channel for self-advocacy. He learned that the idea of "help me-help you" can lead to

Creative Spirit,
continued on page 15

Broadening Horizons: A Graduate's Report from Greece

by Barbara Kondilis-Petropoulos, MSW ('98), MPH ('99)



The Pythagorean harbor (Pythagora's town), Isle of Samos

MAJOR transitions or changes are pivotal times when one's ability to adapt is tested. Whether the stress concerns a new home, a new relationship, having children, taking care of others, or experiencing loss, social workers are experienced in effecting successful outcomes and helping clients reduce stress. But what happens when *you* are the one experiencing the transition? What if you are thrown into a completely different culture and have to relearn ways to "survive"?

Relocating to Greece

This scenario happened to me three years ago, when I decided to move to Athens,

What if you are thrown into a completely different culture and have to relearn ways to "survive"?

Greece, after several years of longing to live the European life and experience different cultures in a quieter, more family-oriented environment and on a smaller continent. While still a graduate social work student, I had participated in a Psychology Department research project on success factors for families living abroad, and I knew that social support was the number one success factor of "survival."

Being bilingual, having lived in Greece as a young child for a short time, and having friends and family, I thought it would all be easy. However, I soon learned that even seasoned social workers can be disillusioned! My experiences have included witnessing societal strife: massive protests against "privatizing" education complete with anarchists burning and trashing educational buildings and cars nearby, a mass catastrophe of uncontrollable forest fires, and the deaths of several people who were friends or relatives of friends.

I moved an entire household from the U.S. to Greece—experiencing the infamous customs process firsthand in the process—and worked the longest and hardest I ever



Barbara meets with a student in her role as coordinator of Student Affairs.

had in my job as a faculty member and researcher at a new university (Hellenic American University). I also got married! I believe my scores have been off the charts on the “stress scales” of transitions and changes. My favorite book as a kid was *The Little Engine That Could*, about a small train trying to go up the hill while saying to itself, “I think I can, I think I can,” and eventually going over hills with little to no effort. This phrase became my mantra.

Adjusting to a New Life

Leaving the familiar for the less so, living and working in a system that often operates by “chance,” viewing firsthand poverty as people try to make it on very little, and experiencing a culture in transition has made me appreciate the skills I acquired by holding past positions and studying at the BU Schools of Social Work and Public Health. I hoped to effectively apply my knowledge and skills in public health social work to my new environs.

Greece is a country of history and a rather homogenous population. Much changed in the early '90s, partly from Greece's formal induction into the European Union and switching from the age-old drachma to the current currency of the euro. The country's population of more than 10 million includes over one million foreigners—both legal and illegal immigrants—which has created new issues of diversity and adjustment for the locals.

One of my initial projects after I arrived was starting the first Toastmasters club—an international public speaking organization—in Greece. It has grown to over 25 members and more are enrolling; the club has become a type of “group therapy” not only for the people who seek to improve themselves, but also for me, as I continue motivating and building my leadership skills.

Working in the University

I currently serve as the university's Coordinator of Student Affairs. My responsibilities include overseeing all student policies, groups, and activities; disciplinary issues; counseling referrals; and anything else you can think of that relates to

students! I have a part-time faculty teaching position in health care manage-

*Experiencing
a culture in transition
has made me appreciate
the skills I acquired at
the BU Schools of Social
Work and Public Health.*

ment in the MBA program and assist in the social sciences in the undergraduate programs. I also am responsible for a European Commission Marie Curie Reintegration grant-funded project on health literacy. This two-year project focuses on issues including readability, sources of health information, and informed consent. Finally, I coordinate alumni affairs and the career development program.

In my spare time, I have joined the Tobacco Coalition for Greece in an effort to promote the reduction of second-hand smoke, enforce existing non-smoking laws, and work on social market-



Donkeys on the Isle of Hydra

ing campaigns. My dream of coming to Europe hoping to combine the fields of public health and social work has indeed become a reality. To quote Herman Cain, “Success is not the key to happiness. Happiness is the key to success. If you love what you are doing, you will be successful.” Though not without challenges, my work and personal life in this very different society and culture are joyful and fruitful, and for that I am grateful. •

The Monastery horizon, Isle of Patmos



ALUMNI/AE UPDATE

Compiled by Kalina Crystal Black ('09) and Rilda Kissel

Editors' note:

We invite you to join other BUSSW alumni/ae in the next *Currents* by completing and returning the update form in this issue or by going online at www.bu.edu/ssw/alumni. We look forward to hearing from you!

'40s

Harriet Stambaugh ('47), of Plano, Texas, has recently moved into a condo with her husband James, and now lives near her sons, grandchildren, and great-grandchildren as well as friends of long standing. **Rollin Williams** ('49), of Salem, Connecticut, is enjoying life, traveling, movies, opera, watching sports, and writing poetry.

'50s

Pallassana R. Balgopal ('52), of Urbana, Illinois, has retired as Professor Emeritus from the University of Illinois's School of Social Work in Urbana-Champaign. He and his wife Shyamala have two married daughters and three grandchildren. **Rachel (Robin) Blumenstein** ('54), of Sarasota, Florida, has recently retired from her careers as clinician, teacher, and administrator in both Boston, Massachusetts, and California. She recently chose to work part time at a Women's Resource Center overseeing the Peer Counselor Program. **Betsy Mazur Levinsky** ('55), has retired and lives with her husband in New York City. **Alfred "Al" Brown** ('59), of San Mateo, California, retired ten years ago from the U.S. Department of Health and Human Services Children's Bureau and is now working as a consultant to non-profit agencies serving homeless and runaway youth. He and his wife Diane just celebrated their 48th wedding anniversary. They have two grandchildren.

'60s

Marlene (Amelio) Goldstein ('69), of Tarrytown, New York, works as a senior medical social worker at Westchester Medical Center in Valhalla. She recently purchased a condo and has two daughters, ages 29 and 26. **Cary N. Mack** ('69), of Baton Rouge, Louisiana, has transitioned from his career as a psychologist/administrator with the Federal Bureau of Prisons to a private practice providing psychological assessments for children with learning disabilities. He has also worked with Katrina victims.

'70s

Kathy Laufer ('70), of West Newton, Massachusetts, works as a geriatric social worker for the Newton Department of Senior Services. She is the proud grandmother of two young children. **Carl A. Olliver** ('74), of Hyannis, Massachusetts, has recently retired and is presently involved in a Senior Volunteer Program with the Cape Cod Chorale, the Academy for Lifelong Learning, and the Barnstable Unitarian Church. **Judith Elizabeth Love** ('75), of Arlington, Massachusetts, has retired from social work and become an avid horticulturalist. She studied at the Massachusetts Horticultural Society and also plays a mean game of mahjongg. **Melinda Strauss** ('75), of Framingham, Massachusetts, was a speaker at the 2007 Annual World Employee Assistance Program (EAP) Conference in San Diego on "Gay and Lesbian Clients: Best Practices for an Effective EAP." She is a corporate employee assistance consultant for Partners EAP, Partners Healthcare System, Inc., in Boston. **Francis "Tuck" Amory** ('76), of Worcester, Massachusetts, recently received the George I. Alden Trust Award for Teaching Excellence in 2007. Francis has been involved in planning and implementing the Bold Steps Initiative, as well as

creating wrap-around services for homeless families in the Worcester area. This will be Francis's 30th year teaching at Worcester State College. **Larry Christ** ('76), of Underhill, Vermont, has been appointed Director of the Office of Public Health Preparedness for the Vermont Department of Public Health. **Sue Lyddon Hall** ('77), of Topeka, Kansas, has recently become Medical Director of Newborn Intensive Care at Stormont-Vail Hospital. As a physician, she uses her social work skills every day. **Andrea N. Fink** ('78), of Katonah, New York, works as a therapist at JCAA Westchester in a short-term treatment program for emotionally disturbed boys aged 6 to 16. She has recently been trained in both trauma-based treatment and the sanctuary model and spends her free time fishing, boating, hiking, kayaking, and antiquing. **Dania Jekel** ('79), of Newton, Massachusetts, presented on Asperger's Syndrome as part of the NASW-Massachusetts Chapter fall continuing education series. Dania is executive director of the Asperger's Association of New England.

'80s

Gary Bailey ('80), of Boston, Massachusetts, was honored with the 2007 Legacy of Caring Award at the Devereux 11th Annual Legacy of Caring Conference in October. Gary is an associate professor at Simmons College School of Social Work and is former National and Massachusetts Chapter NASW President. **Karen (Rich) Kriger** ('81), of Hollywood, Florida, has a successful private practice and three daughters. **Stewart R. Bloom** ('82), of Elk Grove, California, encourages colleagues to check out his website at www.lifeatbalance.com. **Ruth Housman** ('82), of Newton, Massachusetts, is a semi-retired psychiatric social worker, but still volunteers to see a limited number of clients. A poet and writer, she has written

about ethical issues in *FOCUS*, the Massachusetts NASW newsletter. She is also writing an extensive diary about the synchronicity of life, parts of which are now available to the public at the Hay Library at Brown University and The Mel Yoken Collection of Letters. **Cynthia L. Malia** ('82), of Sudbury, Massachusetts, is currently a doctoral candidate at Simmons College School of Social Work. Her area of specialty includes researching and working with at-risk adolescents and young adults. She is married with two children, ages 23 and 17. **Patti DeRosa** ('83), of Randolph, Massachusetts, has released a new CD, *Secrets and Stories*. It features 12 new songs plus a cover of Gil Scott-Heron's classic, *Winter in America*. You can order the CD at www.coffeedom.com/pattiderosa. **Meg E. Stafford** ('83), of Littleton, Massachusetts, has had her own practice in Andover since 1998 and now has certificates in Organizational Consulting and Executive Coaching from MSPP. She is married with two daughters, ages 17 and 12. **Judith Babcock** ('84), of Akron, Ohio, is teaching part time at Northeast Ohio University's College of Medicine and Pharmacy, helping first-year students learn how to communicate with their patients. She is also exploring retirement career possibilities with MentorCoach and was recently appointed board member for Akron Community Health Resources. **Diane Whitehead Gates** ('84), has relocated from Pennsylvania to Franklin, Vermont. She is a licensed clinical social worker and works at a rural health clinic. **Jennifer Gozlan** ('85), of Springfield, New Jersey, is currently juggling end-of-life care with a private practice. She serves on the advisory board of Good Grief, a local nonprofit dedicated to the needs of children who have experienced loss. **Reva Kleppel** ('85), of Longmeadow, Massachusetts, recently started a part-time job at the Baystate Medical Center.

Her position as Research Coordinator centers on a project that looks at teamwork on medical floors; she is excited for the opportunity to integrate her MSW/MPH experience in this innovative study. **Sharyn Rose** ('85), of Somerville, Massachusetts, has married her partner of twelve years and established a private practice in Davis Square. **Geoff Wilkinson** ('85), of Milton, Massachusetts, recently left his position as Executive Director of the Massachusetts Public Health Association and accepted John Auebach's invitation to work in his administration at the Massachusetts Department of Public Health, where he will serve as the Senior Policy Advisor to the Commissioner. **Tracy Barnes** ('86), of Watertown, Massachusetts, is working full time as an outpatient clinician in the Wellesley and Belmont offices of Colony Care Behavioral Health. Tracy's caseload includes adolescents, families, adults, and couples. **Catharine Gilfeather** ('86), of New Bedford, Massachusetts, is working in the field of EAP and private practice. She is busy raising two teens, the oldest of whom just left for college. **Mia Fishman** ('89), of Alpharetta, Georgia, is Program Manager/Team Leader for Information Systems and Technology with Children's Healthcare of Atlanta.

'90s

Steven Brand ('93), of Roswell Georgia, launched Life Strategy Coaching, LLC, and Life Strategy Expeditions, working with high-functioning, growth-oriented clients who are not interested in therapy. **Larry Betcher** ('93), of Lake Oswego, Oregon, was elected President-Elect of the NASW, Oregon Chapter. He also recently started a new job as the team lead of the Psychiatric Secure Review Board program at Providence Portland Medical Center, where he provides a combination of outpatient treatment and parole review. **Iliniza "Nisa" Mary Baty** ('94), of Santa Monica, California, recently transitioned into private practice as a psychotherapist after working for ten years at a local nonprofit, where she supervised the school-based mental health pro-

grams, clinical staff, and PPS/MSW interns. She and her husband Won have two sons. **Leda Knee** ('95), of Granada Hills, California, recently received a Master's degree in Conflict Resolution from Pepperdine University School of Law Straus Institute. She is currently working for the Los Angeles Unified School District as a Psychiatric Social Worker and is also a part-time faculty member for the University of Phoenix. **Mark Rutherford** ('95), of West Palm Beach, Florida, has been in private practice since 1998. He and his partner Tom Davis have two children, Christopher, 11, and Sophia, 7. **David Glick** ('96), of Marietta, Georgia, maintains a clinical and consulting practice outside of Atlanta. He and his wife Linda (SAR '91) just celebrated their 11th anniversary and are raising two daughters. He would love to hear from SSW classmates at dhglick@yahoo.com. **Laura (Chomentowski) Pisco** ('96), of West Hartford, Connecticut, is working with the Early Childhood Consultation Partnership as an early childhood mental health consultant. She has two children, Daniela, 11, and Javier, 8. **Susan Rusk** ('96), of Fort Meyers, Florida, is a Medical Social Worker in the Emergency Department with Lee Memorial Health System. She is planning a move to Biloxi, Mississippi, in the near future to be closer to her family. **Marilyn Kayser Asher** ('97), of Wakefield, Rhode Island, works as a manager of emergency services at South Shore Mental Health Center. **Nadia Chamblin-Foster** ('97), of Cambridge, Massachusetts, has left Boston University's Office of Development and Alumni Relations, where she was the School's Director of Development, to assume the position of Manager of Community Outreach with Boston Medical Center (BMC). In this position, she will be responsible for BMC community outreach and marketing initiatives for Boston and Northeastern Massachusetts. **Christopher Delulio** ('97), of Lynn, Massachusetts, continues to work for the North Suffolk Mental Health Association and supervises social work interns. He was also recently elected to a three-year term as an at-large

trustee for a local nonprofit. **Amy Fitzgibbon** ('97), of Westboro, Massachusetts, is a stay-at-home mom to her children Robbie and Alyssa. She and her husband Rob celebrated 11 years of marriage in November. She would be happy to hear from any classmates at rffiii@yahoo.com. **Marcia Lewin-Berlin** ('97), of Acton, Massachusetts, is a Hospice Social Worker at Partners Hospice in Waltham. **Nikole Matzouranis** ('97), of Haverhill, Massachusetts, has worked as a social work discharge planner at Caritas Hold Family Hospital inpatient psychiatric unit for seven years. **Jeannine Marhafer Smith** ('97), of Albany, New York, has been

an independent public relations consultant for the past eight years. **Meg Gomes** ('98), of West Warwick, Rhode Island, is certified as a Nutured Heart Specialist and uses the approach to help children and adolescents with ADD/ADHD and other childhood disorders. She was also recently certified as a Corporate and Life Coach. **Danielle Faerrier** ('99), of Waltham, Massachusetts, is the CEO of ReDiscovery Inc., a Waltham-based nonprofit that assists children exiting the foster care system. **Joelle Ferron** ('99), of New London, New Hampshire, is currently finishing her PhD in Social Work at UNC Chapel Hill. She has begun her postdoctoral

It's News to Us!

Please complete and return this form to: Alumni Relations Office, Boston University School of Social Work, 264 Bay State Road, Boston, MA 02215. We'll print your news of work activities, family life, special events, awards, publications, etc., in the next issue of *Currents*. You may also complete this form online. Please visit the Alumni Section of the School's website at www.bu.edu/ssw/alumni.

Please print in ink.

☐ This is a change of address.

name		graduation year	
address			
city	state	zip code	
daytime telephone		evening telephone	
e-mail			

Interested in the Interdisciplinary PhD Program in Sociology and Social Work at Boston University?

For more information, please contact Dr. Mary Collins at mcollins@bu.edu or 617-353-3748. You may also complete and return this form to the Interdisciplinary PhD Program, Boston University School of Social Work, 264 Bay State Road, Boston, MA 02215.

name

address

city

state

zip code

daytime telephone

evening telephone

e-mail

work at Dartmouth's Psychiatric Research Group. **Priscella Rodriguez** ('99), of Bridgeport, Connecticut, is working as a social worker at Casey Family Services, providing permanency planning, case management, and therapeutic support to families and youth. **Lisa Thakker** ('99), of Oak Lawn, Illinois, is New Americans Policy Project Coordinator with the Illinois Coalition for Immigrant and Refugee Rights. She continues her role as a BUSSW Alumni Association Network Representative in the Midwest Region. **Shand Wentworth** ('99), of Franconia, New Hampshire, is working as a civilian contractor in the Military Family Life Consultant in the Coaching Young Families Program.

'00s

Flinda Behringer ('00), of Los Angeles, California, recently moved to the Los Angeles area and hopes to connect with BU alumni in the area. **Barbara Buckman** ('00), of Milford, New Hampshire, was named the director of clinical and administrative services of Milford Regional Counseling Services in September 2007. **Melanie Northrop** ('01), of Wellesley, Massachusetts, is a staff clinician at Tufts University Counseling and Mental Health Services. In September, she conducted the BUSSW Professional Education

Program, "Overwhelmed Under the Ivy: Issues, Trends, and Challenges in College Mental Health." She also has a private practice in Cambridge where she specializes in cross-national and trauma counseling with students. She is delighted to report that the oldest of her three daughters is a freshman at Boston University. **Tami Gouveia-Vigeant** ('01), of Lowell, Massachusetts, just bought a new house in the city. She recently was promoted to Assistant Director of the Northeast Center for Healthy Communities, which provides technical assistance to local health coalitions and initiatives throughout northeastern Massachusetts. **Sophia Henry** ('01), of Decatur, Georgia, is Director of Programs with Georgia Rehabilitation Outreach, Inc. She also has a private practice that emphasizes integrating body, mind, and life. She is a BUSSW alumni network representative in the southeast region. **Alison Inerra** ('03), of Brooklyn, New York, is working at a nursing home in Manhattan. She would like to hear from alumni in the area at allie053@yahoo.com. **Lydia Morris** ('02), of Bellevue, Washington, married Michael Flood in 2006. The couple lived in Malawi, Africa, for almost six months while Lydia worked for Save the Children. Recently, they returned to the Seattle area. **Michael Remeck** ('02), of

Allston, Massachusetts, is employed as a social services consultant by an Oakland, California family-owned geriatric consulting company promoting the quality of life in nursing homes throughout the country. He covers 21 nursing homes in Massachusetts, New Hampshire, and Ohio, supporting social workers and staff in promoting culture change and homelike environments with an emphasis on resident center approaches to caregiving. **Shawna Rodrigues** ('02), of Portland, Oregon, is currently working as the Mental Health Program Director for Clackamas County Children's Commission Head Start and supervising interns from Portland State University. **Erin Salvatore** ('02), of New York, New York, is working at the Family Justice Center in Brooklyn, New York, counseling children who have witnessed domestic violence. She is supervising a first-year intern from Columbia University School of Social Work. **Erin Letsch** ('03), of Arlington, Virginia, is currently a technical writer in the Asset Forfeiture and Money Laundering Section of the Criminal Division of the Department of Justice. **Elizabeth Melo** ('03), of Burlington, Massachusetts, welcomed John Fraser Melo into her family on May 17, 2007. In October she moved from Somerville to her first home. In September, she took a part-time position at NASW in Boston as a social work staff associate. She will be working on Symposium '08, the Home Education Program, and other fundraising efforts at NASW. **Kathleen Marie MacDuffie** ('05), of Mt. Kisco, New York, moved to New York, got married, and had a baby. Although she misses Boston and her work as a medical social worker at MGH, she loves being a mom to her six-month-old son Santi. **Sarah Glanville** ('04), of Waltham, Massachusetts, is a clinician at the Walker School's Acute Residential Treatment Program in Needham. She and her husband just celebrated their first anniversary. **Laurie (Cantrell) Grant** ('04), of Peabody, Massachusetts, married last year and is assistant director at the Beverly Council on Aging. **Lauren Beth Penn Greenbaum** ('04), of Portland, Oregon, has been working in a variety of settings

including adoption, community mental health, managed care, and group practice. She opened her private practice in August 2007. **Jessica (Levine) Wizman** ('04), of Leland, North Carolina, recently had a baby and started working in private practice. **Shana Heather Rackmill** ('06), of South Boston, Massachusetts, runs a clinical residential program in Framingham for 18-to-22 year olds in DSS custody. **Maria Schifino** ('06), of Revere, Massachusetts, currently loves her position as Pediatric Social Worker for Boston Medical Center's Hematology/Oncology Division. **Lori Schloss** ('06), of Somerville, Massachusetts, has been a social worker at Harbor Schools and Family Services, a group home for adolescent girls, since September 2006. She is responsible for all individual, family, and group therapy. Lori recently got engaged and is planning an October 2008 wedding. **Deborah Schwartz** ('07), of Dartmouth, Massachusetts, passed her LSCW exam this June and continues her work at the Massachusetts Department of Mental Health in crisis intervention and children's case management.

Currents

Newsletter of the Boston University School of Social Work and its Alumni Association

Vol. XIX, No. 1
Fall/Winter 2007

Currents is published by the Boston University School of Social Work, in conjunction with the Alumni Association.

Co-Editors: Ken Schulman and Rilda Kissel

Articles written by: Kalina Black ('09), Nadia Chamblin-Foster ('97), Nanci Ginty ('01), Rilda Kissel, Barbara Kondilis-Petropoulos ('98), Betty J. Ruth ('84), Cate Solomon, Gail Steketee, Ken Schulman, Trudy Zimmerman ('75)

Photography: Boston University Photo Services, Tfawa Haynes ('07), Barbara Kondilis-Petropoulos ('98), Terry Lane, Matt Mewton

Designed and produced by Boston University Creative Services

Boston University's policies provide for equal opportunity and affirmative action in employment and admission to all programs of the University.

1107 916544



Please recycle

Dean's Office, from page 2

the purview of IT administrator Seth Pritikin, the need for additional IT support, upgrades, and new technology continues to challenge our budget.

- **Space needs** were managed this year, but limited classroom space, continuing requests for visiting professorships at SSW, and new grant awards are likely to make this issue problematic in the short term.

- Our **search for a new Dean** remains very active with Professors Maryann Amodeo, Cassandra Clay, and Lena Lundgren serving on the Search Committee.

As evident from these activities, the School is alive with exceptional teaching, scholarship, research, and service to the community. We are delighted that our alumni, in particular, continue to be involved in so many different ways. Please let us know if you have comments about

our programs and activities; we welcome your input.

Thank you so much for your continued interest in the School of Social Work.

Sincerely,



Gail Steketee, PhD
Dean *ad interim* and Professor

Short Takes, from page 6

tor of the *Korean Journal of Social Welfare*, the most prominent social work journal in Korea.

Laursen is a PhD student and lecturer in the Department of Sociology, Social Work and Organization at Aalborg University in Denmark. He teaches social work practice and is a leader of social work education. His area of research is substance abuse and young people.

IGSW Receives New Grant From The Atlantic Philanthropies

The Institute of Geriatric Social Work (IGSW), located at Boston University School of Social Work, has received a nine-month grant of \$720,000 from The Atlantic Philanthropies.

Established in 2002, IGSW has become a national leader in the effort to build a stronger workforce for an aging society through educational innovation, research

on training effectiveness, and workforce redesign. Over the past five years, IGSW has trained more than 40,000 practitioners in all 50 states and more than 24 countries, and has pioneered regional and statewide workforce development projects involving online educational programs on aging.

This grant will establish a comprehensive sustainability plan to support IGSW's mission to improve the quality of practice of social workers and other social service practitioners who work with older adults and their families. SSW principal investigators include **Professor Scott Miyake Geron**, **Kathy Kuhn** ('77), and **Bronwyn Keefe**.

For more information, please visit the IGSW website at www.bu.edu/igsw/contact/index.html.

Professor Spencer, Doctoral Students Present on Mentoring Relationships

Professor Renee Spencer and two doctoral students, **Terry Lewis** and **Antoinette**

Basualdo-Delmonico, presented a paper entitled "Mentoring in a Multicultural Society: A Complex Relationship" at the 7th annual Institute for the Study and Promotion of Race and Culture Diversity Challenge conference at Boston College in October. The presentation was part of a symposium called "Building Community and Practice Capacity for Addressing Psychological Trauma and Substance Abuse among Youth of Color," chaired by Lisa Fortuna, MD, MPH, Department of Psychiatry, Harvard Medical School.

The multidisciplinary symposium explored research and practice designed to address disparity in services for minority urban youth from the perspective of social work, education, and child psychiatry. It focused on the implementation of interventions in mentoring, education, and mental health aimed at influencing community-based support for adolescents of color.

For more information, please contact Dr. Spencer at rspenc@bu.edu. •

Creative Spirit, from page 9

a collaborative relationship between social worker and client with an emphasis on concern and perspective from both sides.

Haynes's internships with the Wesley Child Care Center and the Shattuck Hospital provided experience and concrete opportunities in group work and developing curriculums for group sessions. More specifically, Haynes says his work at Shattuck Hospital working with the Living and Recovery Program of HIV-positive individuals had been the most influential and eye-opening, as they provided him with concrete examples of resiliency despite severe obstacles. In recognition of his group work accomplishments in his

fieldwork and course studies, Haynes received a Richard Cohen Scholarship award as well as the Herbert Schneider Memorial Group Work Student of the Year award. As the student of the year, he was also asked to join the board of the Massachusetts chapter of the American Association of Social Work with Groups (AASWG).

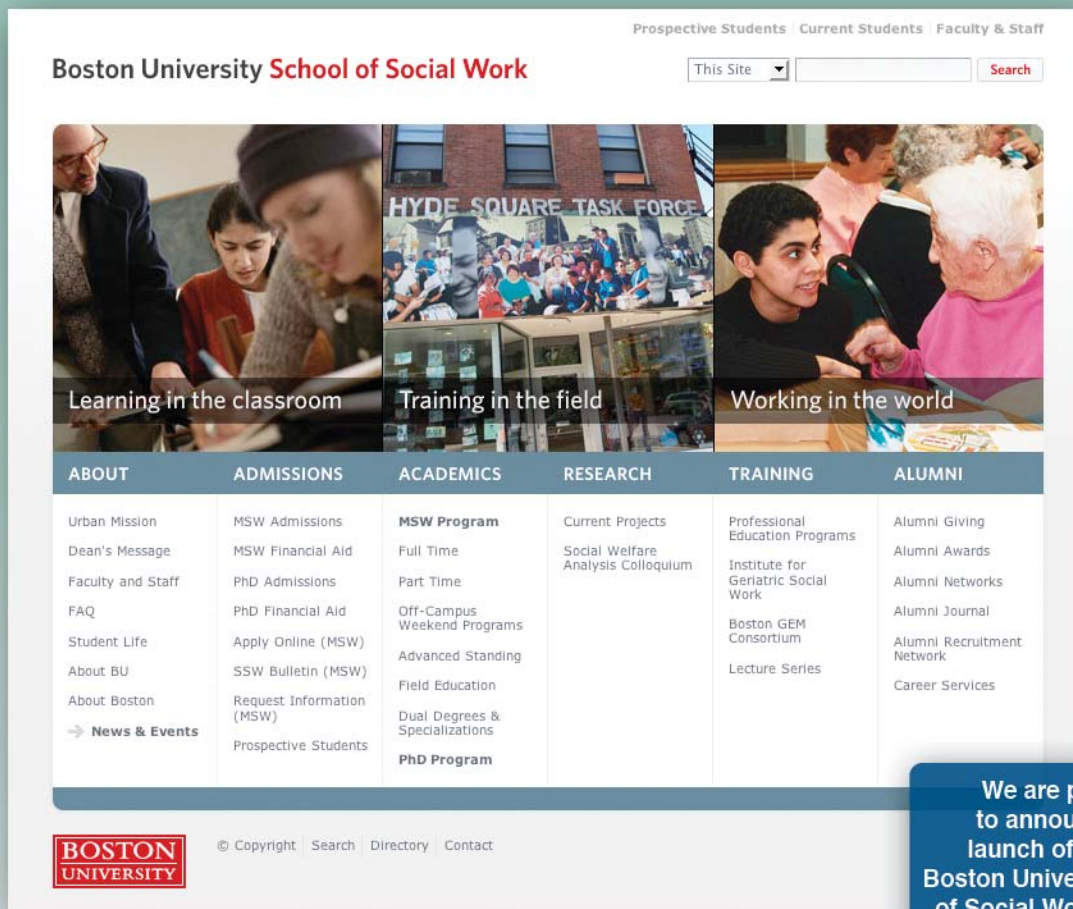
Tfawa also participated in the summer Puerto Rican trip lead by Professor Luz Lopez; he notes how this experience enabled him to examine his own cultural identity and migration history as compared to living on the island or the U.S. mainland.

He also connected to the cultural and racial labeling Puerto Ricans encounter

upon arriving at the U.S. mainland, and the social and psychological effect this has on them. Haynes views his Puerto Rican trip as a valuable tool that has helped him contextualize his own experiences as well as those of many of his clients.

Looking Ahead

Haynes is excited about further opportunities to learn and grow at the Brookline Community Mental Health Center. He also looks forward to developing his photography project and the space for art and collaboration between client and social worker. It is clear that Tfawa Haynes is a wonderfully creative spirit and will no doubt enjoy much success in the field of social work. •



Currents

Boston University School of Social Work
264 Bay State Road
Boston, MA 02215-1403

Address Service Requested

Nonprofit
U.S. Postage
PAID
Boston MA
Permit No. 1839

Happy Holidays!