

# SED Server Instructions

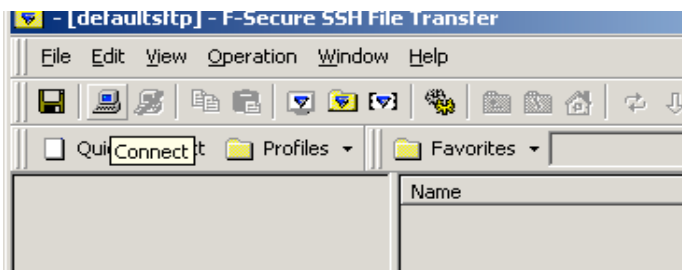
## Remote connection, Windows XP

---

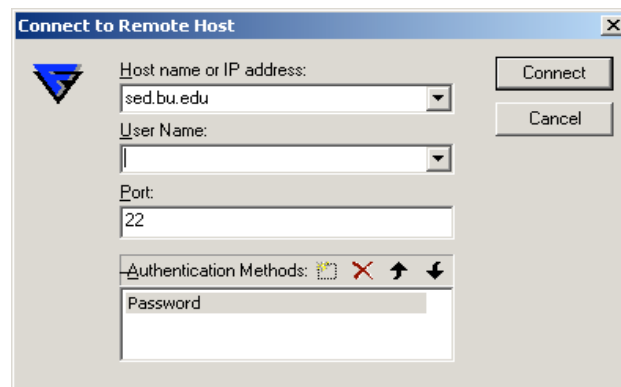
To connect to the SED server remotely (off campus) your computer must have an FTP program such as F-Secure which is available free to members of the BU community. This can be downloaded at <http://www.bu.edu/software/>

### Connecting to the SED server using F-Secure

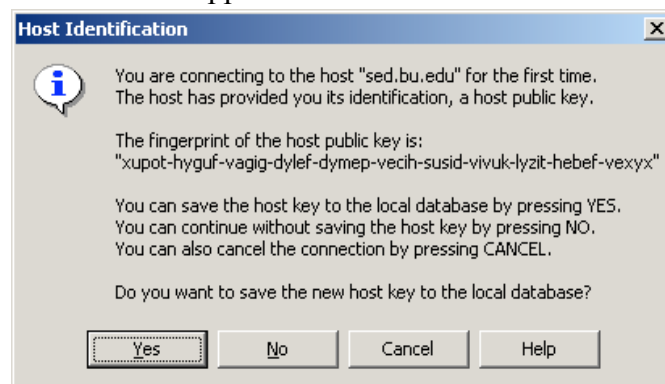
1. Open F-Secure and click on the “connect” icon shown below.



2. Type in the host name “sed.bu.edu” and click ‘Connect’



3. Click “Yes” when this box appears below.



4. You may easily drag and drop files from your computer into this server window.

