

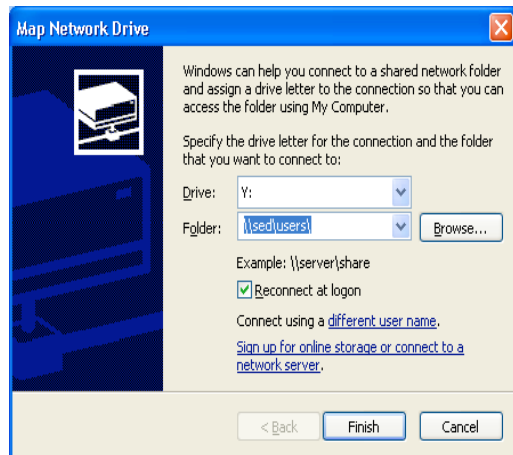
# SED Server Instructions

## Local connection, Windows XP (service pack 2 only)

1. From the Start menu, right- click on “My Network Places” and then choose “Map Network Drive”



2. Choose a lower available drive letter such as X, Y, or Z. In the “Folder” are below type “\\sed\users\username”. Click the Finish button.



3. Enter your username and password.

