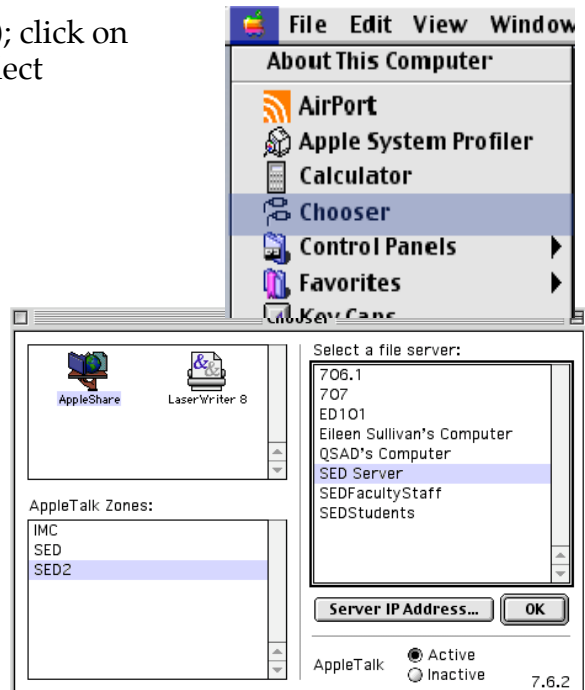


SED Server Instructions

Local connection, Mac OS9

1. To connect to the SED server locally (on campus); click on Apple menu on the top left of your desktop and select "Chooser".

2. Highlight the "AppleShare" icon, "SED2" in the window below and then "SED Server" to the right as show in the following figure. Click OK.

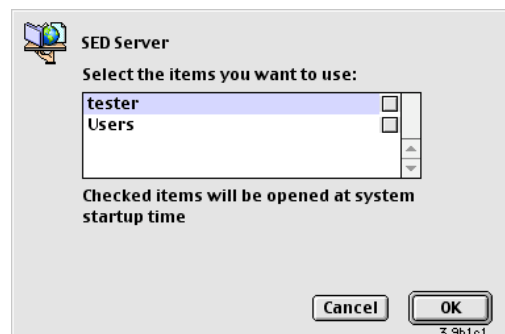


3. Enter your user name and password.

You may also change your password here by choosing the "Change Password" button. If this is your first connection to the server you may be required to change your password.



4. Choose your username and click on OK to logon.



5. An icon of your account will mount on the desktop. You can make alias of the connection by press on Apple+M keys to access more quickly at another time.

