

✓Yes, I would like a new/renewal membership with the Photographic Resource Center.

Please indicate your level of membership.

All membership levels of Supporter or greater include invitation to exclusive VIP receptions prior to exhibition openings and other events.

Individual: \$50

- Unlimited free admission for one cardholder to PRC exhibitions
- Invitation to PRC exhibition opening receptions
- One portfolio review annually
- Subscription to *In the Loupe*, the PRC's newsletter/magazine
- Discounts to PRC lectures, workshops, and other education programs
- Connections (reciprocal benefits with other photography institutions)

Tax-deductible portion: \$25

Student: \$25

- Individual category benefits for full-time students (photocopy of ID required)

Senior: \$40

- Individual category benefits for seniors 65 and above.

Tax-deductible portion: \$15

Family: \$75

- Individual category benefits for two members of a household

Tax-deductible portion: \$50

Supporter: \$150

- Family category benefits
- **Invitation to VIP receptions**

Tax-deductible portion: \$125

Contributor: \$250

- Supporter category benefits
- Free admission to PRC lectures for two family members

Tax-deductible portion: \$225

Benefactor: \$500

- Contributor category benefits
- Optional print from PRC Member Print Program (see other sheet)

Tax-deductible portion with print: \$0 Without print: \$475

Patron: \$1000

- Contributor category benefits
- Optional print(s) from PRC Member Print Program (see other sheet)

Tax-deductible portion with print: \$0 Without print: \$975

All membership levels above Family will be acknowledged on the PRC website and other opportunities for donor acknowledgement.



Photographic Resource Center
at Boston University

832 Commonwealth Ave. | Boston, MA 02215

617.975.0600 www.prcboston.org info@prcboston.org

This is a:

- New membership
- Renewal

Name(s)

Address

City

State

Zip

Phone

Email

What best describes your interest in photography:

- Artist
- Professional
- Curator
- Amateur
- Educator
- Other
- Student
- Collector

Payment Method (check one):

- Check enclosed, payable to the Photographic Resource Center
- Credit Card Visa MasterCard Amex Discover

Credit Card #

Expiration Date

Signature

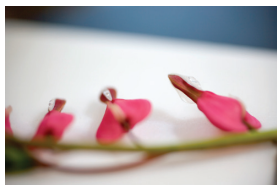
CVV Code

Contribute online at: **www.prcboston.org/support**

- I do not want my name listed on the PRC website and on other donor acknowledgement locations.

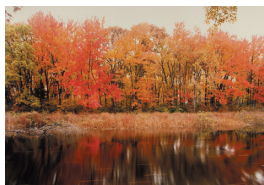
PRC Print Program

For contributions/memberships of \$1000 or more, choose one of the prints below, or two in the \$500 category.



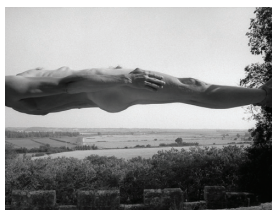
Olivia Parker

Bleeding Heart, 2007,
Epson Ultrachrome K3 Pigment
Print, 13 3/8 x 20 1/16 in.



Frank Gohlke

*The Sudbury River—Ashland,
Massachusetts*, October 1989,
Color Coupler Print, 17 x 23 in.



Arno Minkkinen

Abbaye de Montmajour, 1983, 2007,
Archivally Processed Fiber Based
Gelatin Silver Print, 12 7/8 x 18 in.



Henry Horenstein

*Asiatic Elephant, *Elephas maximus**,
1995, Ilfochrome (Cibachrome) Print,
20 x 16 in.

For contributions/memberships of \$500-\$999



Paul Wainwright

*Window & Shutter, Wentworth
Coolidge Mansion*, 2004,
Selenium Toned Gelatin Silver
Print, 19 x 15 in.



Pelle Cass

*"Everything in nature is lyrical in its
ideal essence, tragic in its fate, and
comic in its existence"* (quotation by
George Santayana), 2003, Gelatin Silver
Print, 22 x 17 3/8 in.



Karin Rosenthal

Island, 2001, Gelatin Silver Print,
15 x 16 in.



Judy Haberl

Amber, 2007, Color Coupler Print,
23 3/8 x 15 5/8 in.

PRC Print Program

As a special bonus for contributions or memberships above \$500, you can choose a free print from the PRC Print Program.

For this very special program, the PRC has invited photographers to produce fine art prints in a limited edition since 1988. These prints are made for and available exclusively through the PRC. Images from the Print Program are housed in numerous prestigious private, public, and corporate collections.

See the other side of this card for prints available through this program, or for greater detail, visit the PRC Print Program page on our website at **www.prcboston.org/mpp.htm**.

All prints are part of a limited edition. The PRC reserves the right to replace the print you choose with a print of equal or greater value. Contact us to check on availability of individual prints and to arrange shipping at 617-975-0600.

Please note that the value of these prints is greater than your donation/membership and therefore, you will not receive a tax deduction. If you do not choose a print with your donation/membership, the full value of your donation/membership is tax-deductible, minus \$25 for a membership subscription to *In the Loupe*.

Please return this card with your membership or donation.



Photographic Resource Center

at Boston University

832 Commonwealth Ave. | Boston, MA 02215

617.975.0600 www.prcboston.org info@prcboston.org