

## Dear Incoming Student,

Mazel tov - you are officially a Terrier and BU Hillel cannot wait to meet you! BU Hillel understands this year is different than any other year we've faced so far. We also understand the importance of friendship and 1x1 interactions now more than ever. Which is why we want to invite you to Fresh Fest!

Fresh Fest is Hillel's orientation program – aimed at helping freshmen adjust to life on BU's campus. We will show you everything you need to know about Jewish life on campus, and have a blast doing it. Join Fresh Fest and you'll have 50 new friends, WHILE PRACTICING SOCIAL DISTANCING, before your roommate even moves in.

Coming to a large campus like Boston University, especially without orientation can be intimidating, but Fresh Fest will make you feel right at home. Meet upper and underclassmen who's passions are diverse – sports, art, music, food, community service, prayer, holidays, schmoozing, traveling to Israel and more. Hillel's mission is to make friends and build community, something we understand is essential now and hope you'll be able to gain through our half day orientation. Your Jewish journey starts today – see you at Fresh Fest!

Please feel free to contact us by emailing [esobel@bu.edu](mailto:esobel@bu.edu) if you have any questions about the Fresh Fest program. You can also learn more by checking out our website at [www.bu.edu/hillel](http://www.bu.edu/hillel). We are updating it with additional features and news all the time.

Have a great summer... we can't wait to meet you!!

Sincerely,

*Boston University Hillel*

# Q & A

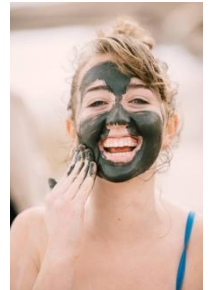
## What is Fresh Fest?

Fresh Fest is a pre-orientation program for all incoming students offered by Hillel and coordinated by facilitators. Facilitators are hand-picked upper-class students that staff the Fresh Fest activities and guide the incoming students as peer mentors. Fresh Fest involves activities around the BU campus, BU Hillel and around the city of Boston. It's a roadmap of the four years ahead!



## Why participate in Fresh Fest?

This program is a great way for incoming students to meet upperclassmen and other incoming students before the academic year begins. Incoming students also get better acquainted with the BU campus and college life, get involved in community service projects and more! As an added bonus, Fresh Fest helps you make 50+ new friends before your roommate even settles in!



## Who is Fresh Fest for?

Everyone! It doesn't matter if you are an incoming first-year student or a transfer student. Hillel will offer fun activities for everyone regardless of your Jewish background or interests. All of the food will be provided by Hillel and is under kashrut supervision. Remember, though, all BU incoming students are welcome, regardless of their religion.



## How do I sign up?

Fill out our online form at [https://bit.ly/Fresh\\_Fest2020](https://bit.ly/Fresh_Fest2020)  
Registration is open!



## What are you waiting for?

It's a great program for you and your incoming friend can do it together. Jump start your college career and be a wiz on all things campus life!

Registration is open! Spots fill quickly. [Register TODAY.](#)

## Additional Questions?

Do you have any additional questions about Fresh Fest? Call Hillel's Managing Director, Ethan Sobel, at 617-353-7662 or e-mail [esobel@bu.edu](mailto:esobel@bu.edu).



# MOVE IN

## When Does My Student Move In?

Move in is spread out between Aug 15-31st. If your student hasn't already, make sure they read Boston University's Fall 2020 Move in Plan. You can click [here](#) to read more about it. BU Hillel also recommends looking at <https://www.bu.edu/back2bu/> to answer any questions you may have about what the fall semester will look like.

## What if my student is participating in FYSOP?

Great! As of now, FYSOP ends on Friday, August 28. Your student will have plenty of time to relax, settle into their room and prepare themselves for Fresh Fest. Additionally, classes do not start until Wednesday, September 2. Please make sure to double check FYSOP's website for any changes there may be due to COVID-19.

## What if I want to celebrate Shabbat on August 28<sup>th</sup>-August 29<sup>th</sup>?

A number of parents and students will be in town for Shabbat before school begins. Please reach out to Rabbi Elie Lehmann ([elie@bu.edu](mailto:elie@bu.edu)) so he can update you on what's being offered through BU Hillel.

## Is Fresh Fest "Too Jewish"?

A number of parents, guardians and incoming students ask us if Fresh Fest is "too Jewish". We always tell them that while Fresh Fest is accommodating to all Jewish students (as we are observant of dietary laws as a Jewish organization), and we do have some Jewish educational components (such as a tzedek –social action- program). Fresh Fest's first priority is to be a social program where students can get to know Hillel and other students on campus. Hillel welcomes all BU incoming students to participate regardless of their religion.

# Welcome to Boston!

## Tips for Parents

### Locating Hillel & Parking

We are situated at **213 Bay State Road, Boston, MA, 02215**. By car, we are a short drive from Route 93 via Storrow Drive, I-90 and I-95. Via public transportation, we are right across from the B-Green Line at the BU East stop.

We recommend using Google Maps for the quickest and easiest route to get to use at BU Hillel. Parking is available outside of our building in metered spots. Additionally, you can pay to use the University lots on Commonwealth Ave. For information on what lots to use and costs, please call BU Parking and Transportation Services at 617-353-2160.

## Helpful Locations

### College Shopping Needs:

#### Bed Bath & Beyond

(617) 536.1090  
Park Dr Boston, MA 02215

### Markets *(With Kosher Options)*:

#### The Butcherie

(617) - 731-9888  
Harvard St, Brookline, MA 02446

#### Shaw's Supermarket

(617) 783 -5878  
Commonwealth  
Ave, Boston, MA 02215

### Boston-Area Favorite Restaurants:

#### Kupel's Bakery,

*Kosher*  
(617) 566-9528

Harvard St,  
Brookline, MA 02446

#### Zaftigs, *Not Kosher*

(617) 975-0075  
Harvard St,  
Brookline, MA 02446

# Fresh Fest 2020!

## 2020 Fresh Fest Schedule

### Monday, August 31, 2020

#### 10am-10:30

##### Registration and Meeting the Hillel Team | Outside of BU Hillel

Students will meet outside of BU Hillel to sign in and meet your fresh fest staff

#### 10:30 a.m. – 1:00 p.m.

##### Interactive walking tour of Boston! | Brookline, Fenway, Public Garden

Start off your school year right and learn all about the cute and fun neighboring areas of BU while making new friends!! We will begin our walking tour in Brookline where current student leaders will show you their favorite restaurants, coffee shops, yoga studios and everything else Brookline has to offer. Afterwards, we will walk to Fenway where you'll have a chance to take pictures at the park and stop at one of Boston's most instagramable donut shops Blackbird! We will finish the tour by walking through Newbury street and end at Boston's beautiful public garden. Our student leaders will make it a fun walking tour along the way with games and scavenger hunts.

#### 1:00 p.m. – 2:00 p.m.

##### Closing Program| Boston Public Garden

Student leaders will run a fun program to finish the day off. If Students would like they can use their own money to buy lunch to bring back to the public garden to enjoy during the program