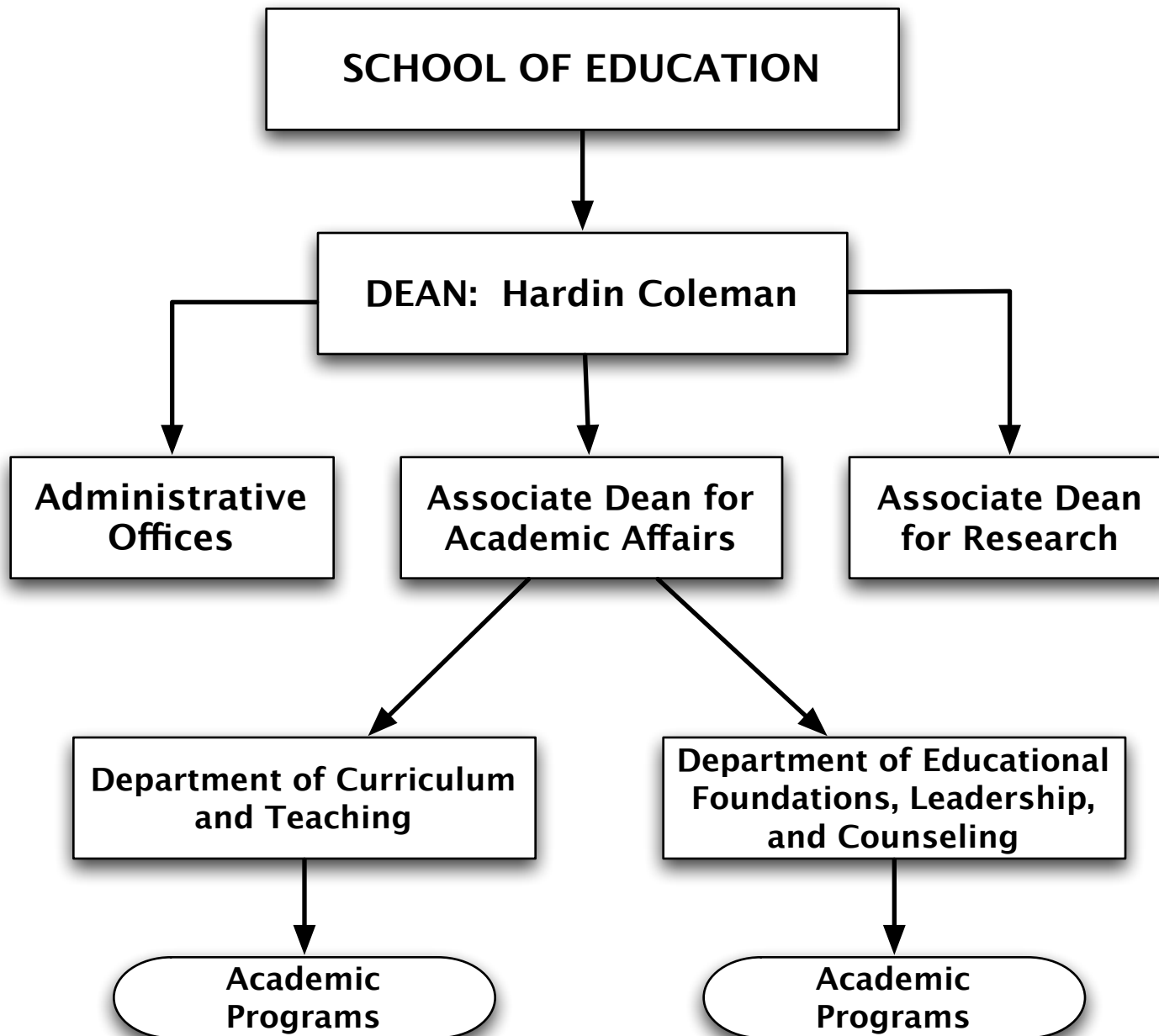




School of Education



SED FACULTY	CURRENT FULL TIME
TOTAL	60
Male	28
Female	32
Tenured	20
Tenure Track	11
Clinical	26
New Faculty (2010-2012)	19
Current Searches	4 (All Clinical)

SED FACULTY: HEADLINES

- The faculty is fairly evenly divided between men and women
- The faculty is fairly evenly divided between tenured or tenure track and clinical.
- About one-third of the faculty are new since 2010, with further searches underway.
- The goal is to turn a good part of the faculty over with a combination of good teachers and strong, active researchers—successful so far.

SED STUDENTS

	Total	Male	Female
Undergraduate (B.S.)	352	64	288
MAT, Ed.M., CAGS	458	85	373
Doctoral (Ed.D.)	171	72	99

SED STUDENTS: HEADLINES

- SED is characterized by a predominately female student body at all levels—especially at the undergraduate and master’s levels.
- 2011-2012 FRESHMAN CLASS STATISTICS
 - 76 Students
 - Average GPA = 3.56
 - Average Combined SAT = 1928
 - Average High School Class Rank: 89.6 Percentile
 - 1 Presidential Scholar; 2 Trustee Scholars; 1 MLK Scholar

SED PROGRAMS SET 1	B.S.	M. ED.	ED. D.
Bilingual Education	X		
Counseling		X	
Counseling Psychology			X
Curriculum and Teaching		X	X
Deaf Studies	X		
Developmental Studies in Human Development and Education			X
Developmental Studies in Literacy and Language		X	X
Early Childhood Education	X	X	

SED PROGRAMS SET 2	B.S.	M. ED.	ED. D.
Education of the Deaf		X	
Educational Leadership and Development			X
Educational Media and Technology		X	
Elementary Education	X	X	
English Education	X	X	
Health Education		X	
Latin and Classical Studies	X	X	
Mathematics Education	X	X	

SED PROGRAMS SET 3	B.S.	M. ED.	ED. D.
Modern Foreign Language Education (Arabic, French, or Spanish)	X	X	
Physical Education and Coaching		X	
Policy, Planning and Administration (includes Higher Education Administration)		X	
Reading Education		X	
Science Education	X	X	
Social Studies Education	X	X	
Special Education	X	X	X
Teaching English as a Second Language		X	

SED PROGRAMS: HEADLINES

- SED has 24 programs:
 - They cover a wide range of professional roles in education, especially in schooling.
 - Two are exclusively undergraduate programs.
 - Six include doctoral programs; three are exclusively doctoral programs.
 - Nine combine undergraduate and master's level study.
 - Eight are master's only programs.

SED GOALS: HEADLINES #1

- Expanded emphasis on research
- Recruiting, hiring, and promoting young and mid-career active researchers as members of the SED faculty
- Highlighting research that informs better educational and administrative practice

SED GOALS: HEADLINES #2

- Continued emphasis on very strong teaching and student-faculty relationships
- Continuing and expanding strong collaboration with schools and other educational entities

SED GOALS: HEADLINES #3

- Continuing to evaluate and improve SED students and programs
- Maintain a caring and close-knit SED community for students and faculty