

Oracle Installation Guide

Version 24
For Oracle 10gR2 and Oracle 11gR2

January 2012



Copyright 2005 – 2012 Robert Schudy
Permission granted for any use of Boston University

With contributions from Adam Arakelian, Dhananjay Kulkarni, and Warren Mansur

Table of Contents

Introduction.....	3
Installing Oracle.....	7
Step 1: Creating an OTN Account.....	7
Step 2: Downloading Oracle	12
Step 3: Unzipping Oracle	19
Step 4: Installing and Configuring Oracle	22
Troubleshooting Common Installation and Usage Issues.....	38
Appendix A: Configuring Oracle Startup Options	40
Appendix B: Installing and Enabling the Microsoft Loopback Adapter.....	42
Appendix C: Installing Oracle 10g Express Edition	48
Introduction	48
Requirements.....	48
Installation (Windows)	48
Installation (Linux)	53
Starting the Database (Windows and Linux).....	54
Appendix D: How to reset your SYSTEM password on Windows	56
Appendix E: How to reduce the length of your PATH on Windows	57

Introduction

These instructions are used by students enrolled in the Master of Science in Computer Information Systems and other Computer Science Department programs in both on-campus and online programs. In some places these instructions say that you should contact your instructor. Online students should normally contact their facilitator first.

The document begins with a discussion of Oracle, connecting to the Oracle web site, creating an Oracle Technology Network account, downloading either an Oracle 10g Release 2 or Oracle 11g Release 2 zip file, unzipping it and installing Oracle. We continually update this document; please let us know of problems you encounter or questions not answered.

The examples in the main document are for the Microsoft Windows family, including Windows 2000, XP, Vista, and System 7. If you are installing on an operating system other than the Windows family, such as Linux or Solaris, then follow these instructions to join OTN, except download the version of Oracle for your platform rather than the Windows version. The *Quick Installation Guide* and the full *Installation Guide* for your operating system can be found in the *Install* directory created when you unzip the file you will download as part of these instructions.

These setup instructions are for Oracle 10g Release 2 and for Oracle 11g Release 2. The installation instructions are very similar, and the screen shots in these instructions are from installations of both Oracle 10gR2 and Oracle 11gR2. Oracle has maintained upward compatibility for SQL between Oracle versions for many years. If you cannot install Oracle 10g or 11g on your own machine, and you have ready access to an Oracle installation you may be able to use it. All of the exercises in MET CS579 and CS669 can be completed using Oracle 8i or later. Some of the exercises in MET CS779 require Oracle 9i or later. CS 779 students may wish to use a recent version of Oracle, such as 11gR2 if you choose to do a term project using Oracle Grid or another feature only available in the latest releases. Students in CS 674 Database Security should normally install the Enterprise edition, because some exercises in CS 674 use the Enterprise Manager software that comes with the Enterprise edition.

If you have difficulty installing Oracle we have a virtualization of a Windows XP machine with Oracle already installed. Virtualization is technology that allows us to efficiently run a virtual machine on the machine that you already have. We use Microsoft's virtualization software, which is free of charge to students. The virtual image is too large for a CDROM, so you will need to either download it from our web site, or we can overnight you a DVD containing the image. We recommend that you have one gigabyte or more of physical RAM to run the Oracle virtualization.

Also included are instructions for setting up Oracle Express Edition, a smaller edition of the full product. Although it has limitations with regard to the amount of memory,

size, and number of tables allowed, it is quite usable for our classes, and it introduces a much lighter load on your computer. We recommend that you install Oracle 10g Express Edition for classes except CS674 Database Security, which makes use of the Enterprise Manager. You should also install the Enterprise Edition if you plan to do a term project with large databases, Oracle Grid, Enterprise Manager or other features that are not in the Express Edition.

Oracle is continually updating Oracle.com, so the screens that you see on Oracle.com will probably be a little different than what is shown in this document. If you can't determine how to proceed because what you see is too different, or if something goes wrong ask your instructor what to do. Good luck, and have fun!

Oracle Overview

About Oracle

We will make extensive use of Oracle in this class. We have chosen Oracle instead of IBM DB2, Microsoft SQL Server, MySQL, or one of the numerous other commercial or open source databases because for three decades Oracle has led the industry in the development and delivery of advanced database technology and standards. Oracle has essentially all of the advanced features in any relational or object-relational database management system. Because of this, many of the new ANSI/ISO SQL standards are based on Oracle, so when you learn Oracle you are mainly close to the portable standards. Unlike MSSQL Server, Oracle runs on all common platforms from huge symmetric multiprocessors to ordinary PCs. Oracle is also very scalable, and it supports both clustering and grid computing to surpass the performance and reliability of any single platform. Oracle is the standard by which other database management systems are measured, and when you learn to use Oracle your skills will transition well to other database management systems.

Oracle runs on ordinary machines. Oracle runs on the largest multiprocessors, but Oracle also runs very well on ordinary PCs and recent Macintoshes. PCs are the most common Oracle hardware platform, and there are Oracle versions for many PC operating systems, including the Windows family and Linux.

The following instructions are for the default configuration, the easiest of the Oracle installations. Oracle is very flexible and can be configured to use less or more in the way of machine resources. There are suggestions in the instructions below for minimizing hard disk usage. The easiest way to minimizing the use of resources on your machine is to download and install Oracle Express, which requires about half the RAM of the other Oracle editions. Oracle 10gR2 Express Edition is available, but Oracle 11gR2 Express edition may not yet be available. If you want to run Oracle on a platform other than Windows, please see the platform notes at the end of the document or contact your instructor for assistance.

Hardware Requirements

The following information is based on best practices and the hardware requirements specified by Oracle's installation documentation. If you are installing any release and edition of Oracle 11g, Oracle recommends that your system have at least 1GB RAM and roughly 5GB of free disk space. If you are installing any release of Oracle 10g, Oracle recommends that your system have at least 256MB RAM and roughly 3GB of free disk space, though 512MB RAM is recommended. If you choose to run the 64-bit version of Oracle 10g, 512MB RAM is the minimum and 2GB RAM is recommended.

If these hardware requirements are a problem for you please contact your instructor for assistance.

Oracle Editions

Oracle can be installed in one of five editions -- Enterprise, Standard Edition, Standard Edition One, Personal Edition, and Express Edition. All editions come with the core relational DBMS along with full SQL support. The main difference in functionality between the editions is how many advanced features are supported, including features pertaining to high availability, scalability, performance, manageability, data warehousing, and business intelligence. Licensing is different for each edition, which is important when the DBMS is installed in a production environment.

Unless you need the advanced features provided by the Enterprise or Standard Editions, it is recommended that you install Standard Edition One or Express Edition.

Common Platforms

Oracle runs on all common platforms, including the Windows family, the latest Macintosh operating systems, several Linux variants, and several Unix variants. Oracle supports the features that we use in our courses on all platforms, and it doesn't matter what platform your Oracle runs on. You will connect to Oracle using a SQL client, for example Oracle SQL Developer, TOAD, or SQL*Plus. Oracle can be on the same machine as the client or on another machine on the same LAN or anywhere on the Internet.

Platform Independence

Oracle behaves the same regardless of the platform except for database size limitations and performance. Your exercises will behave the same way across all Oracle platforms.

Preparations and Setup

You can obtain a copy of Oracle by downloading Oracle from Oracle.com or by obtaining an Oracle 10GR2 or 11gR2 CDRom from the Computer Science Department. If you experience downloading difficulties, please contact your facilitator, lead facilitator, or course instructor. Most people with broadband should be able to complete the download and install the program with minimal difficulty. If you are installing from a CD-ROM, you will not need the instructions in the following Parts 2 through 4, and you can skip directly to Part 5.

Setting up Oracle is not like setting up an ordinary application. Oracle and other DBMS are more deeply integrated with the operating system than ordinary applications.

Oracle installs do many more things than application installs. The installer will check for the many problems that can occur on your system. Oracle installations on unmodified environments usually occur without significant issues, but many things can go wrong, particularly with modified operating system environments. Expect the unexpected, and don't feel embarrassed if something unexpected happens. Unexpected events are common for database installations. Just contact your facilitator, who will help you.

Oracle Express Edition

The Express Edition is a smaller version that places limits on the size of the database, the number of connections that may be opened, and the number of tables.

For MET courses, we have found that the Express Edition is suitable and has the advantages of a much smaller load on the computer and a simpler installation. Oracle Express Edition does not come with the full SQL*Plus client, which comes with the other editions. Should you choose to use SQL*Plus, you can download and install SQL*Plus separately; the SQLPlus client works fine with Oracle Express. Oracle Express does not come with the Enterprise Manager, for which you will need to install Oracle Enterprise Edition. Oracle Express Edition may only be available for Oracle 10g, and may not be available for Oracle 11g.

Instructions for installing the Express Edition are located in Appendix C.

Installing Oracle

Step 1: Creating an OTN Account

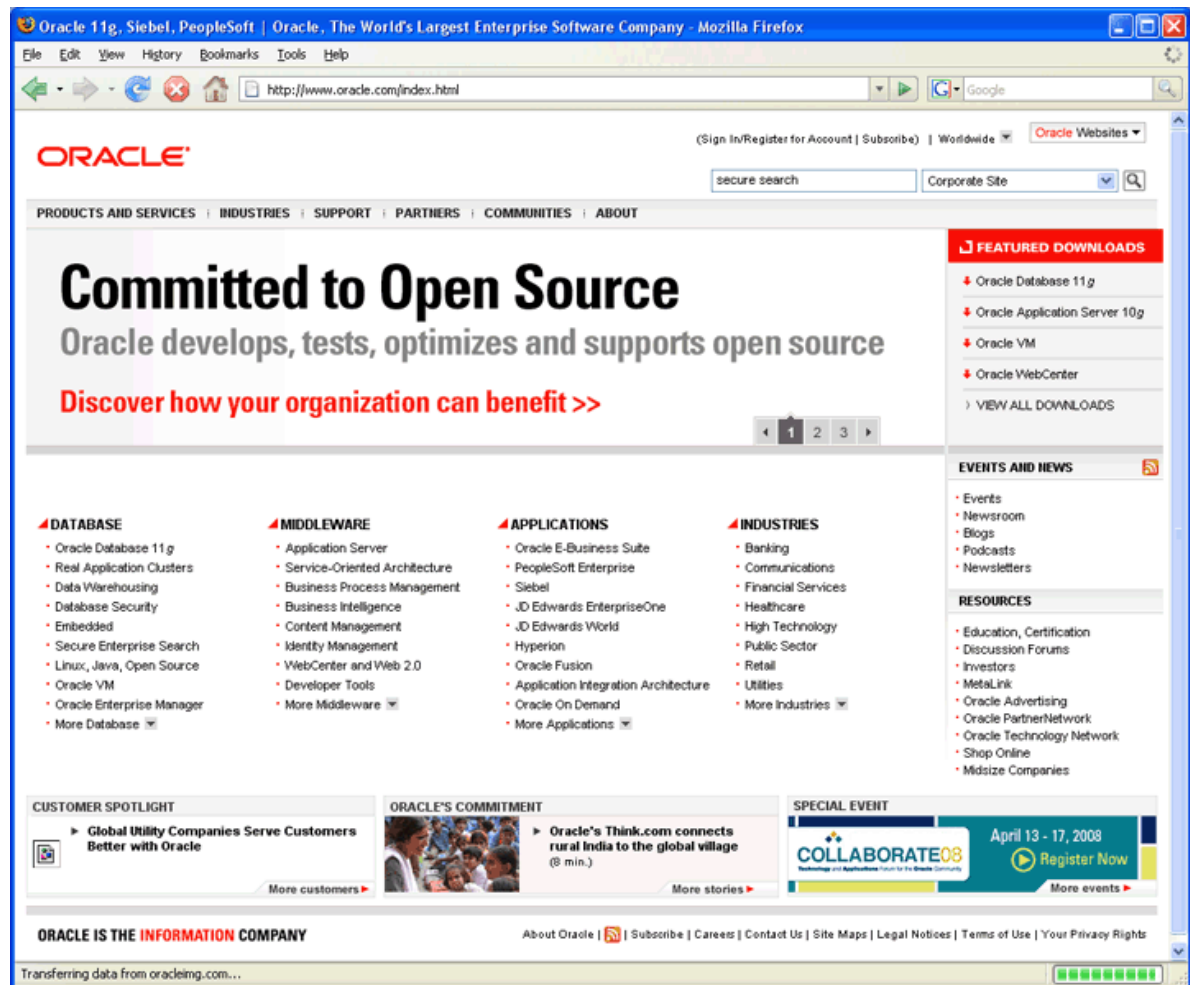
Introduction

This section guides you through the sub-steps to create your own Oracle Technology Network (OTN) account. Before you can download Oracle you must create and login to an Oracle Technology Network account.

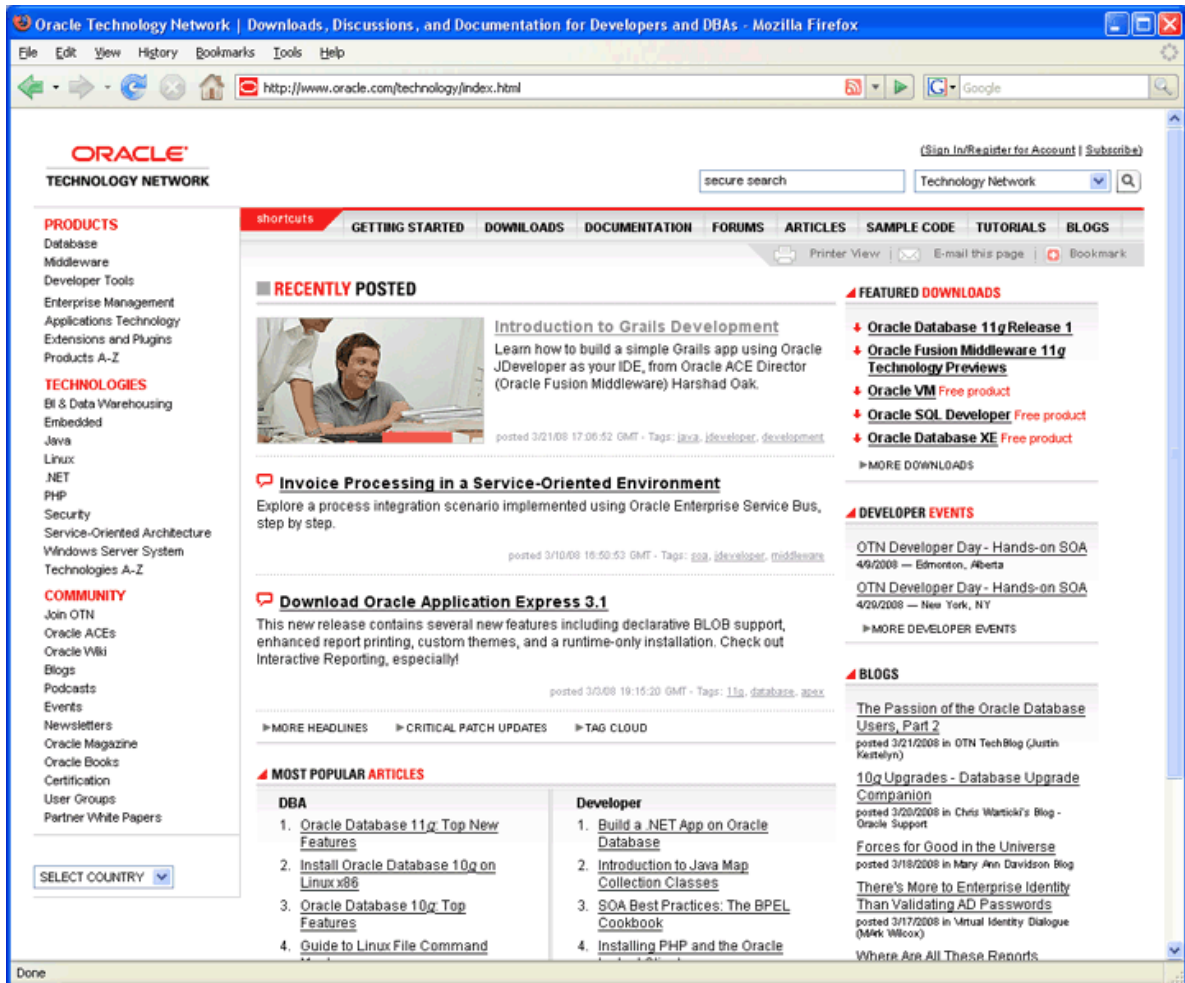
Log On to OTN

Logging onto Oracle Technology Network

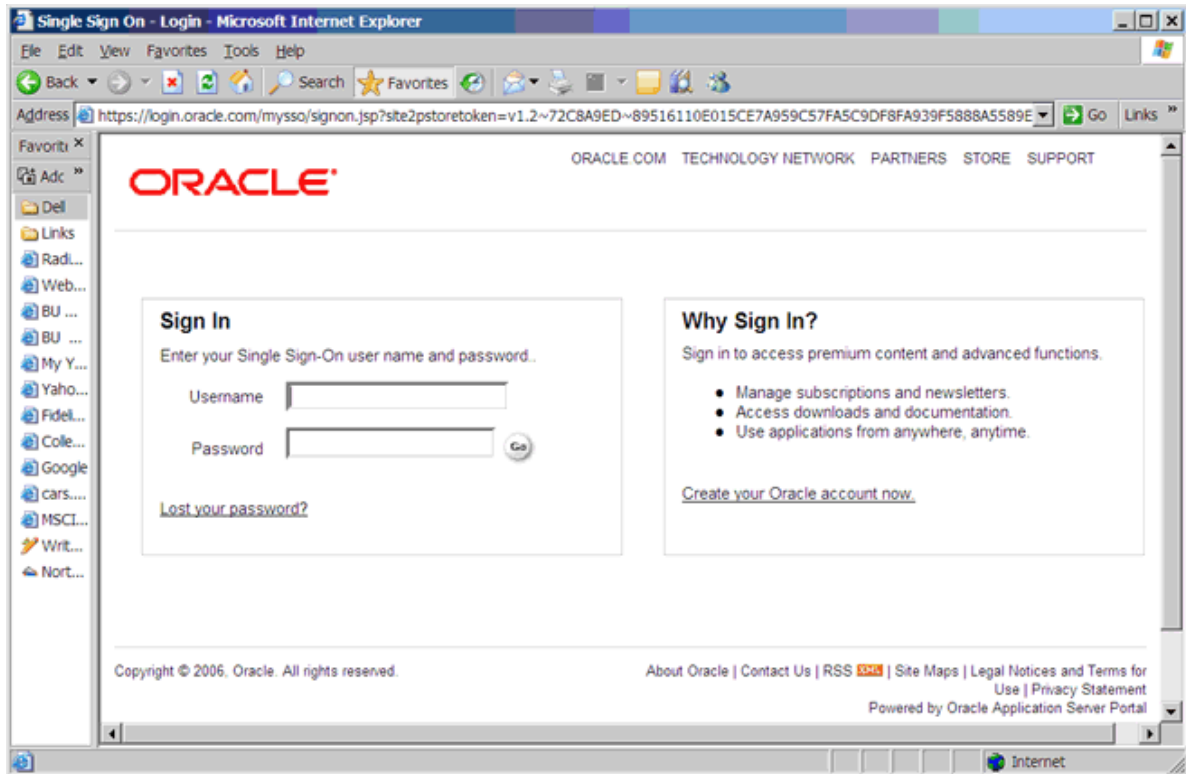
Go to <http://www.oracle.com>. Oracle is constantly updating their web site, so what you see may be different than the following.



Click on the “TECHNOLOGY NETWORK tab at the top or just enter <http://www.oracle.com/technology> into your browser and you will see something like this:



Click on “Sign In/Register for Account” in the upper right hand corner. You should see something like this:

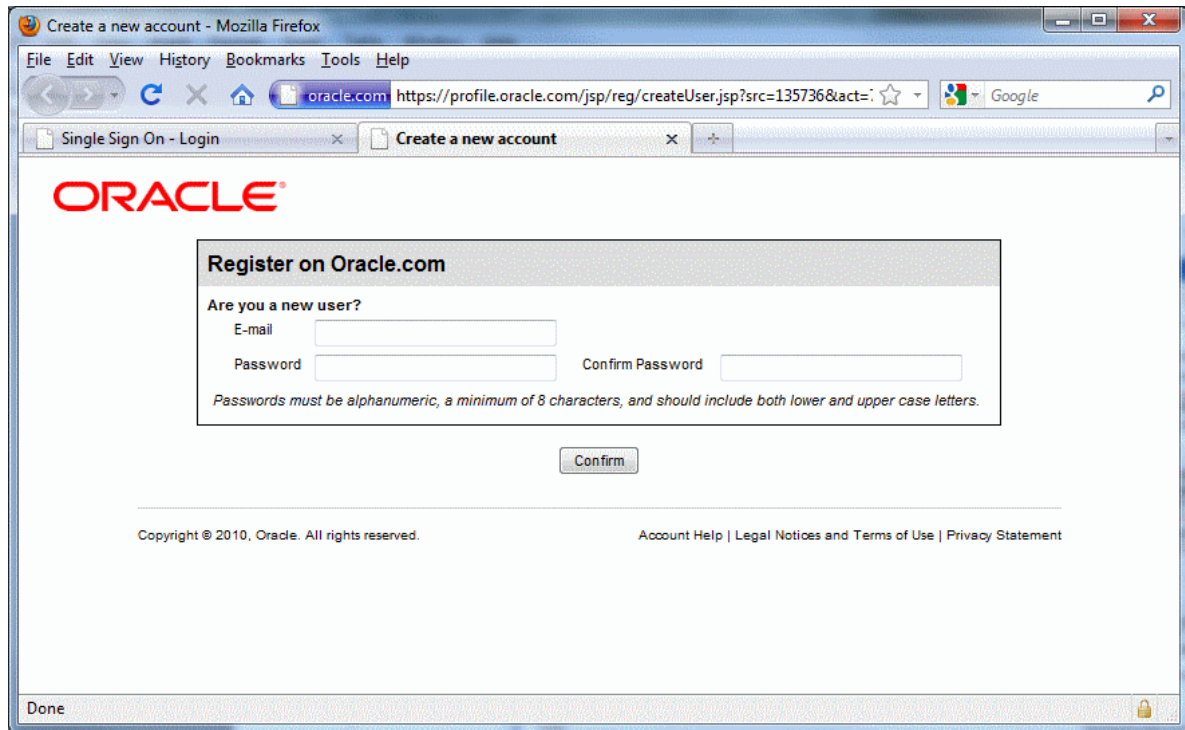


If you already have an Oracle account, enter your new username and password, and then click the "Go" button to continue.

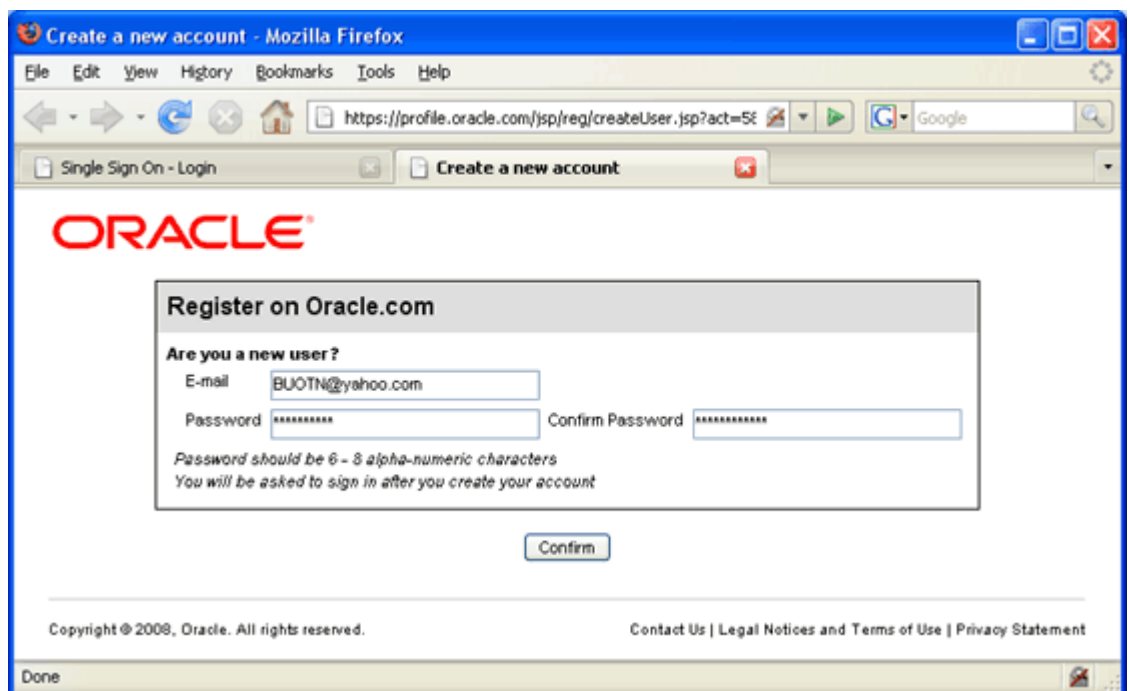
Sign Up For an Account

***Sign Up* for your Oracle OTN Account**

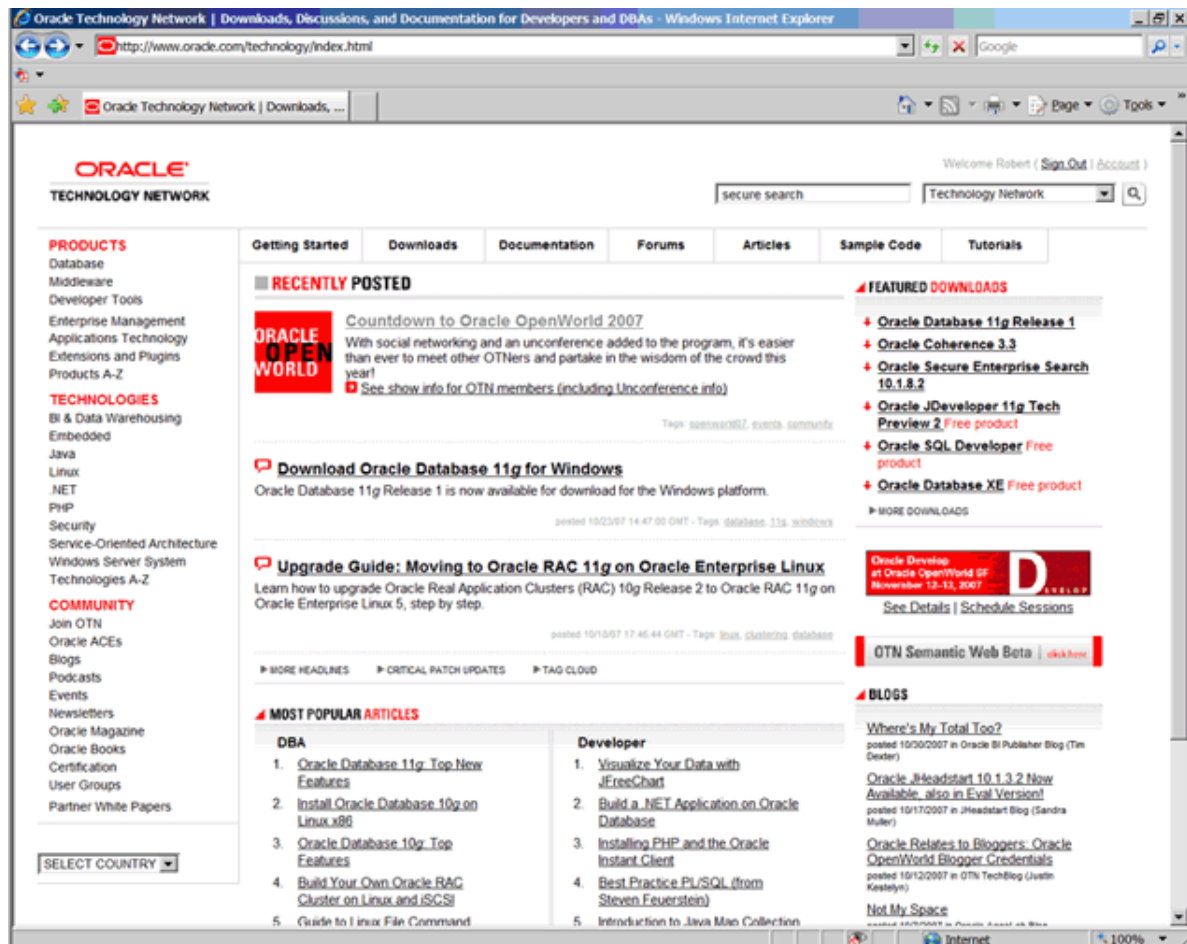
If you don't already have an Oracle account, click on "Create your Oracle account now" at the bottom of the right box. You should see something like the following:



- Type in your email address and a password for your new OTN account.
- Click *Confirm*. Note that Oracle uses the portion of your email address to the left of the "@" sign as your OTN user name. If the site complains that the user name is already taken, you will need to use another email address, or create a new one. It is easy to create a new email account at sites like yahoo.com. I used such a Yahoo email address below.



You will then be presented with a long form asking for your name, address, etc. Complete the form and click "continue." You will find yourself logged into the OTN, as follows.



If you look in the upper right hand corner you should see your first name and "Sign Out", which indicates that you are logged onto OTN.

Step 2: Downloading Oracle

Introduction

The following instructions guide you through the sub-steps to download the Oracle zip file appropriate for your operating system.

Download Oracle

You can get to the Oracle Technology Network directly by following this link:

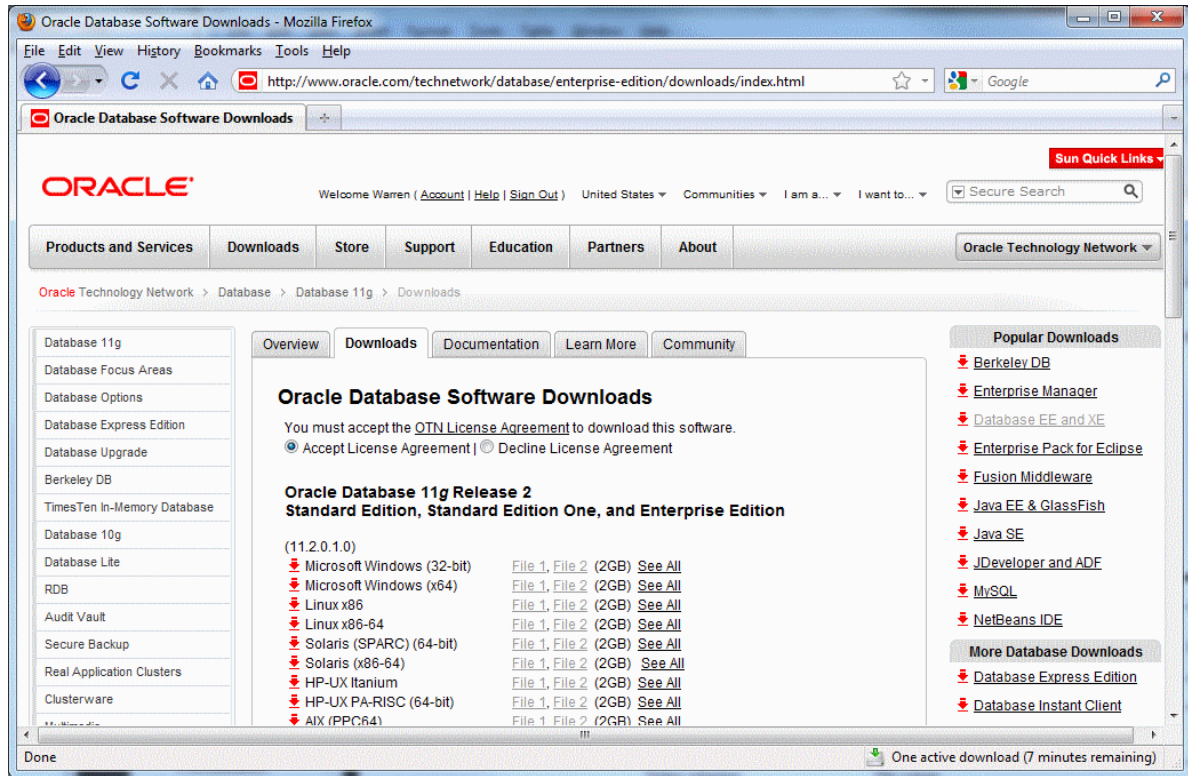
<http://www.oracle.com/technology/index.html>

Select in the following order from the OTN home page above:

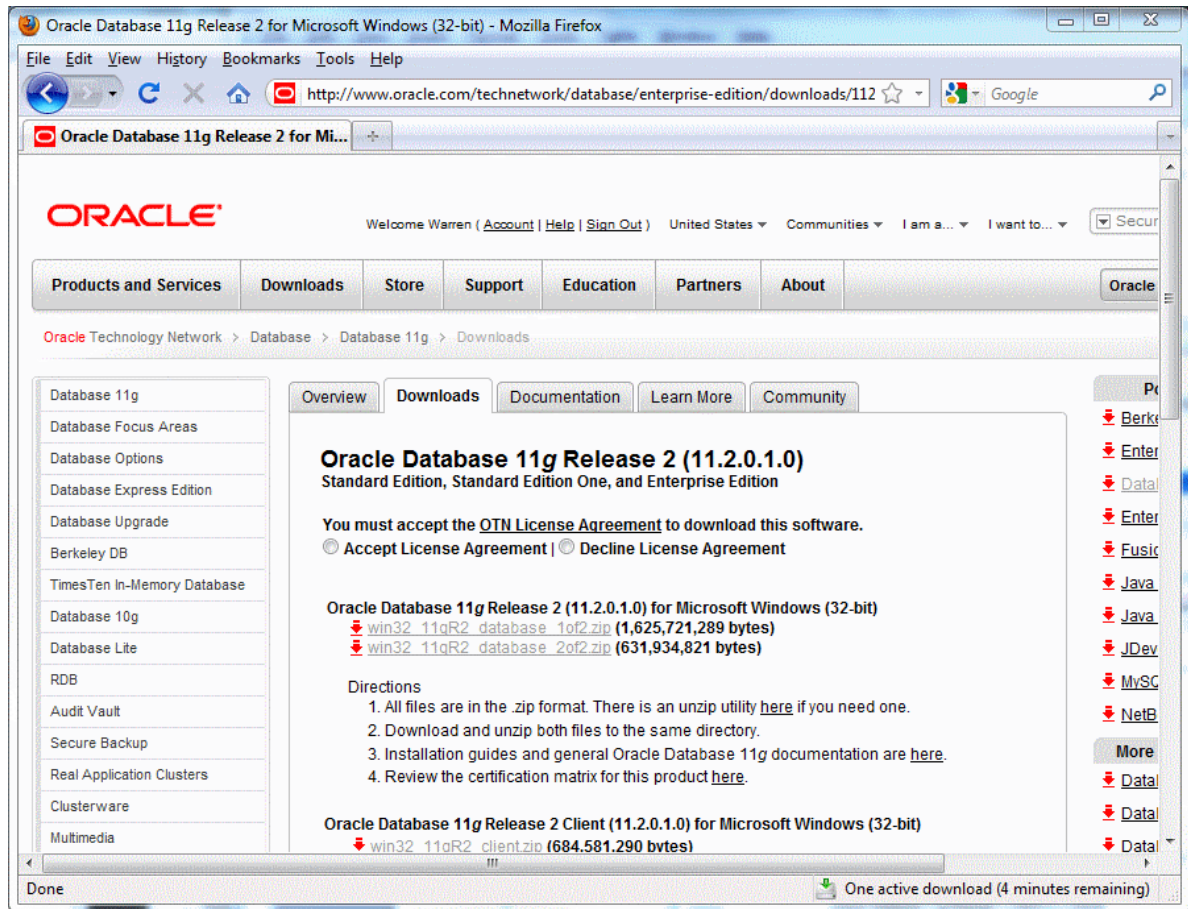
- Downloads tab;
- then Database

This will take you to a page of Oracle database downloads for different platforms and different Oracle versions. Oracle Database 11g Release 2 is listed first, followed by Oracle Database 10g Release 2. The instructions and screenshots in this section cover Oracle 11g Release 2, although the steps involved for other versions are almost identical.

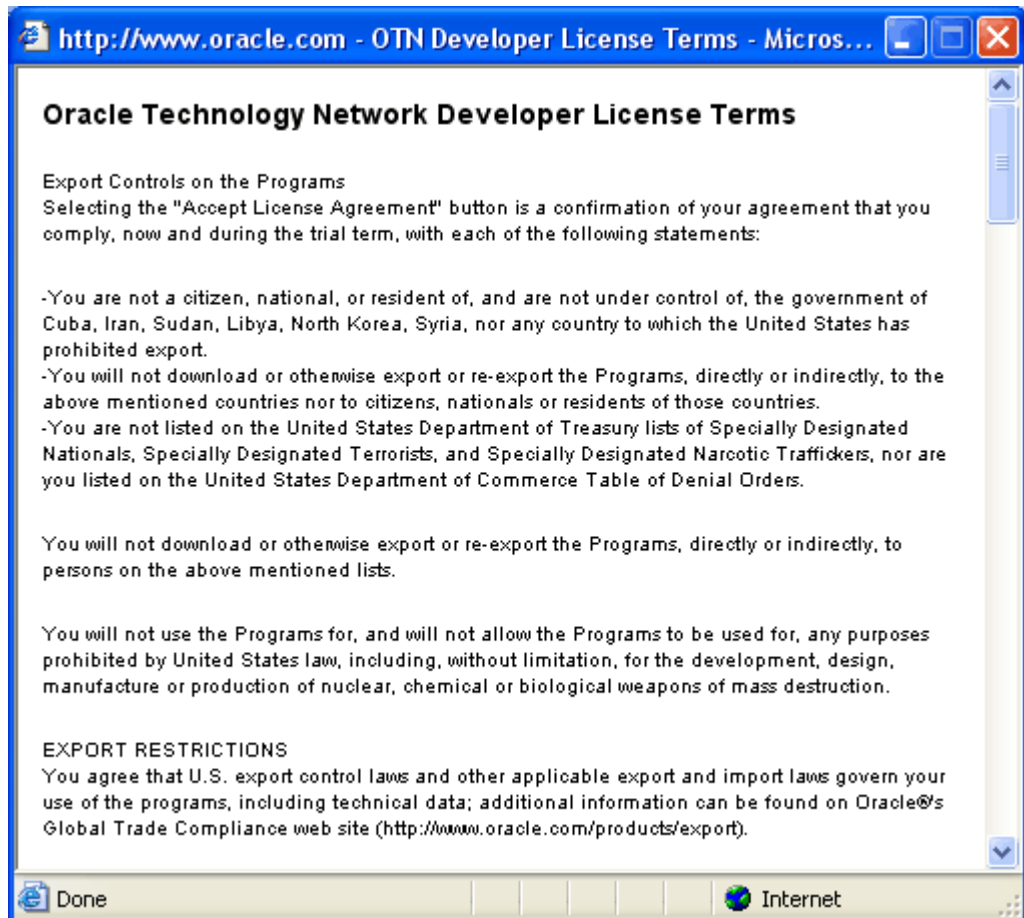
Click on the line for the computer and operating system on which you will run Oracle. The following example shows the line selected for Microsoft Windows, which is the version that most students use. This version supports the entire 32-bit Windows family, including Windows 2000, XP Home and Professional, and 2003. However, if you have a 64-bit machine, it is recommended that you download the 64-bit version of Oracle. This is denoted by the (x64) next to the download link. If you install the 32-bit version of Oracle on a 64-bit machine, it should be backward compatible.



After clicking the “See all” link for the Oracle Database 11g Release 2, 32-bit for Windows, the screen should look like this:

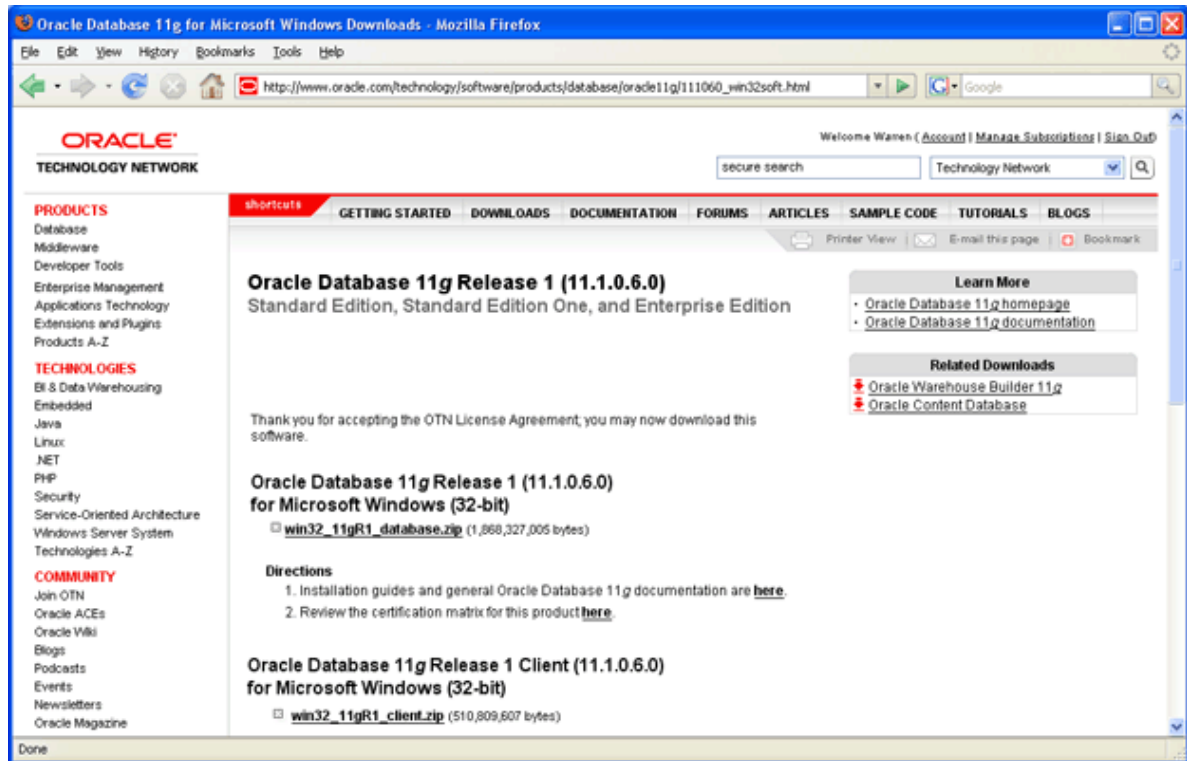


Click on the “OTN License Agreement” link at the top, and the following small window will appear.



The screen contains export restrictions and the OTN license terms. Read the export restrictions. If anyone feels that they cannot accept this license agreement, please contact Jules for assistance.

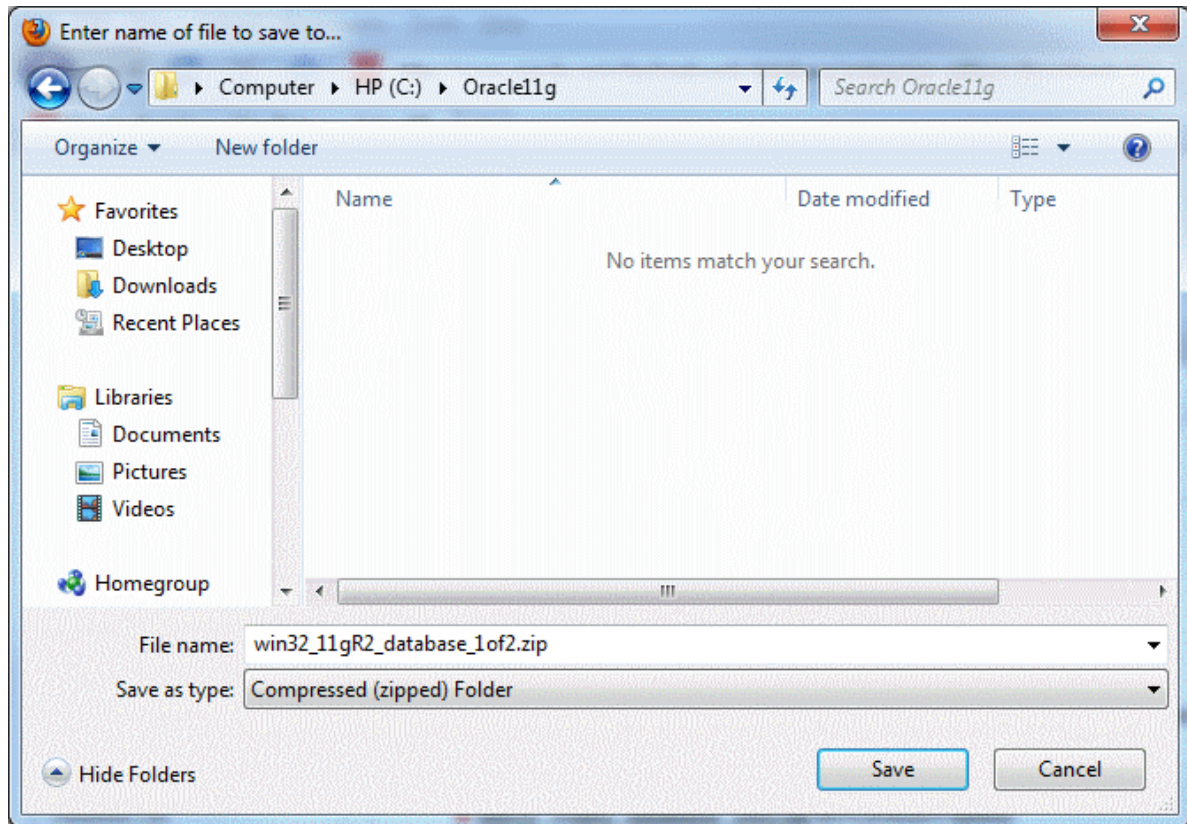
After closing the window, if you agree with the license terms, you then click the *Accept License Agreement* radio button, at which point the text states "Thank you for accepting the OTN License Agreement; you may now download this software."



First click on the “win32_11gR2_database_1of2.zip” link under *Oracle Database 11g Release 2 (11.1.0.6.0) for Microsoft Windows (32-bit)*. Doing so brings you to the next sub-step – saving the zipped installation file.

Save the Zipped Installation File

Create a directory for the download, such as C:\Oracle11g, and download it into that directory. You will see something similar to the following:



Click the Save button, and give time for the file to download in full.

Sometimes a small file is transferred, and the download ends within a few seconds. If this happens it usually works to just try again, sometimes a few times, until a large download is underway. This is a large download, and will take anywhere from fifteen minutes to hours to download, depending upon the speed of your Internet connection.

Repeat these steps to download the second zip file named "win32_11gR2_database_2of2.zip."

While you are waiting is a good time to turn off *On-Access Scanning* in MacAfee Antivirus and other antivirus (AV) programs that scan data that is accessed by the file system. On-access scanning will greatly slow some of the later stages of the installation. Your AV software may behave differently, but you should just be aware that some AV programs inject themselves in the middle of the large Oracle install file system data transfers. You may therefore want to adjust your AV configuration to shorten the install time. The install can succeed with on-access scanning enabled, but it will take a lot longer. Your perimeter AV defenses will not interfere with the install, and they should be left on.

Sometimes it happens that downloads time out or otherwise fail. This usually has to do with the internet connection that you are using. If this happens repeatedly to the point where you are unable to obtain the zipped file in a timely manner, contact your facilitator.

When the download is complete, you now have Oracle 11g on your hard drive, and you can log out from your Oracle OTN login.

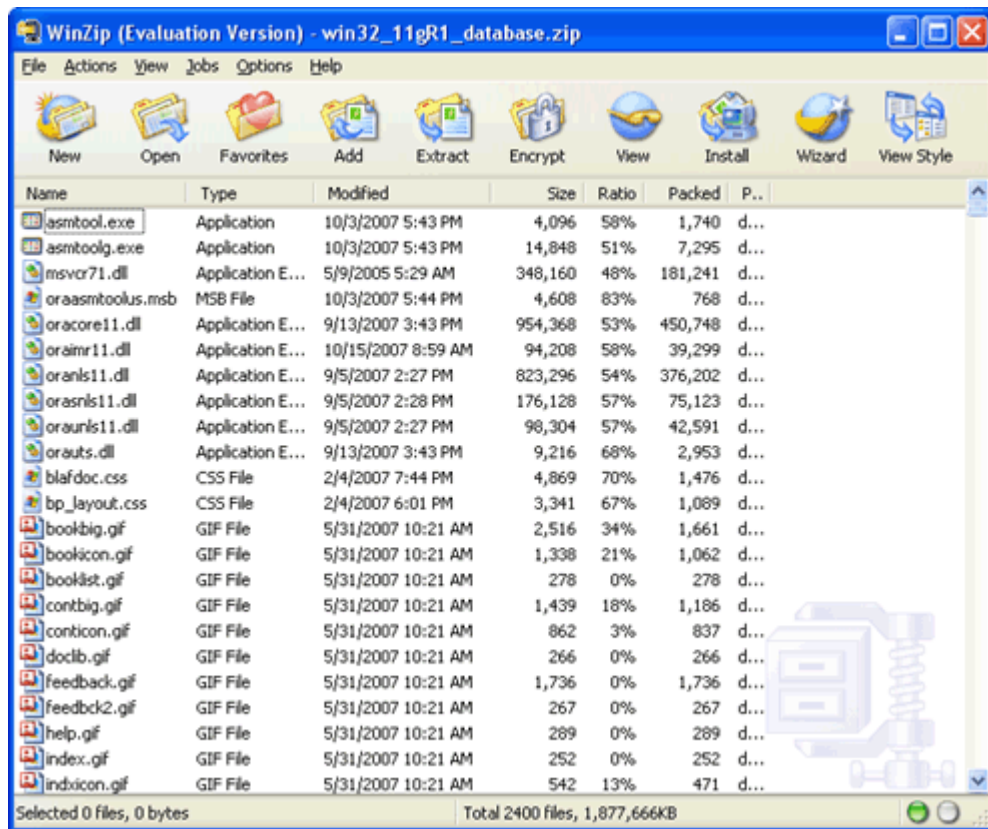
Step 3: Unzipping Oracle

Introduction

The following instructions guide you through the sub-steps to unzip the zipped file that you just downloaded.

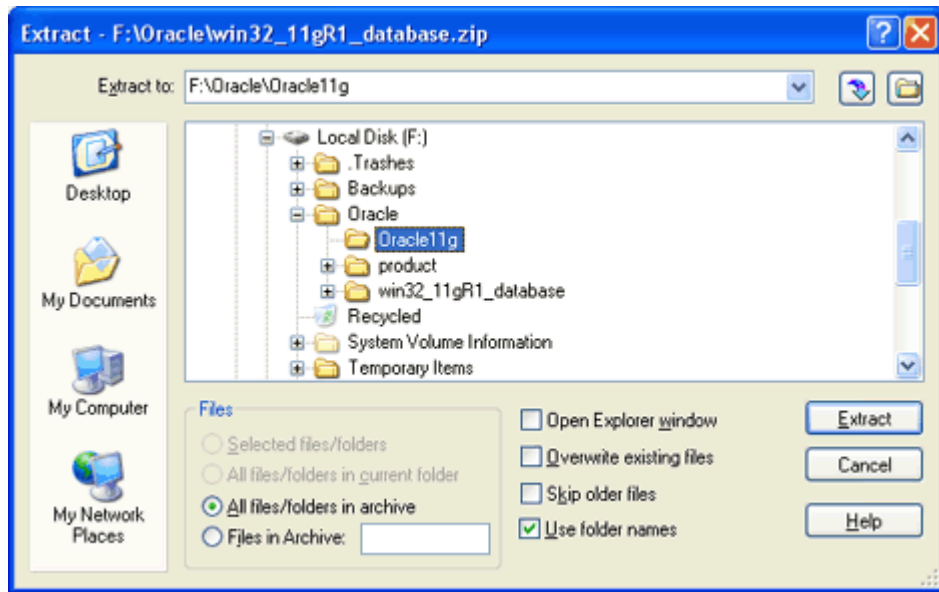
Unzip Oracle Installation File

If a zip program, is present just double click on the first file you downloaded. The zip program should launch. In WinZip, the resulting screen looks similar to this:

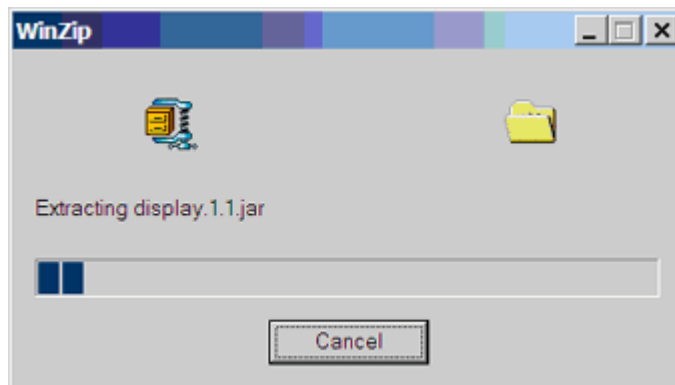


We are next going to extract all files into the same directory where we downloaded the zip file:

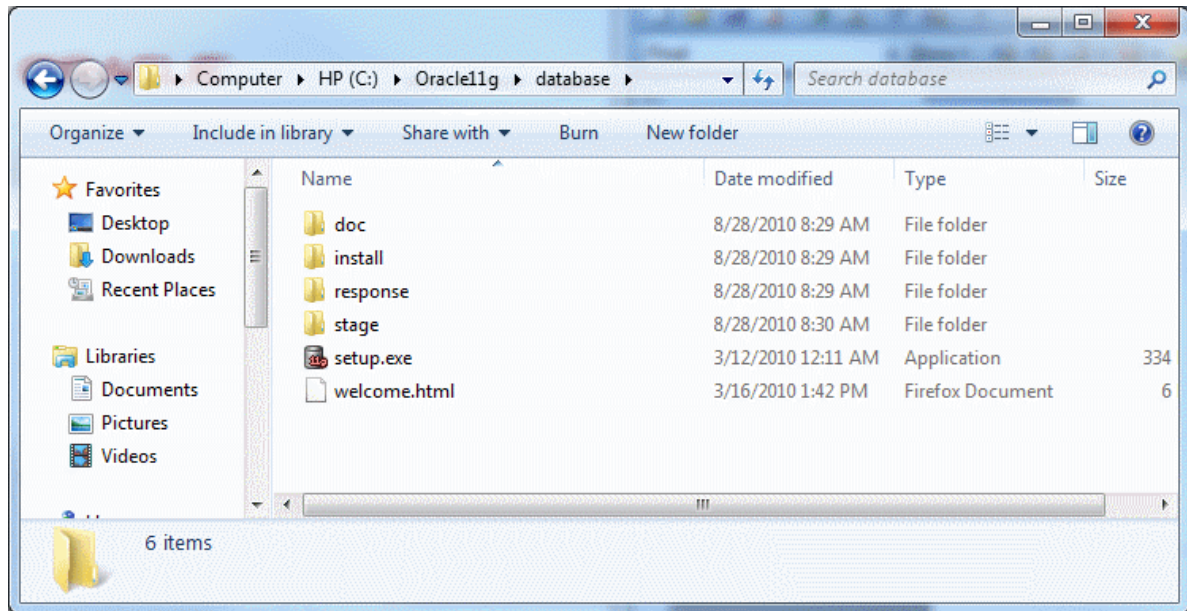
Click *Extract* in the toolbar at the top. You will see a window like the following. Navigate to the folder to which you downloaded the zip, as in this example:



Then check that the radio button for *All files/folders in archive* is selected and that the *Use folder names* box is checked, as above. Then click *Extract*. You will see something like this:



While this is extracting is a good time to take a look at the download directory that you created, such as *C:\Oracle11g*. It should look something like this:



Notice that all of the Oracle 11g files are being unzipped under the *database* folder. The unzipped files will not be much bigger than the compressed zip files, because all of the larger files that are being unzipped are compressed jar files, which cannot be compressed much further.

After a few minutes the unzipping will finish, and you need to repeat these steps for the second file you downloaded. After unzipping both files, you have now completed the steps of downloading and unzipping Oracle. If you are short of disk space you can now delete the zip files.

Important: For your Oracle installation to succeed, the contents of the extraction of both zip files must end up in the same directory. Oracle has provided you with two files for a better download experience; however, the installer expects there to be a single directory structure containing all of the contents from both zip files. There are two way primary ways to accomplish this. The first is to unzip each zip file into the same directory. The second is to unzip each zip file into different directories, but then manually copy the contents of the second directory into the first.

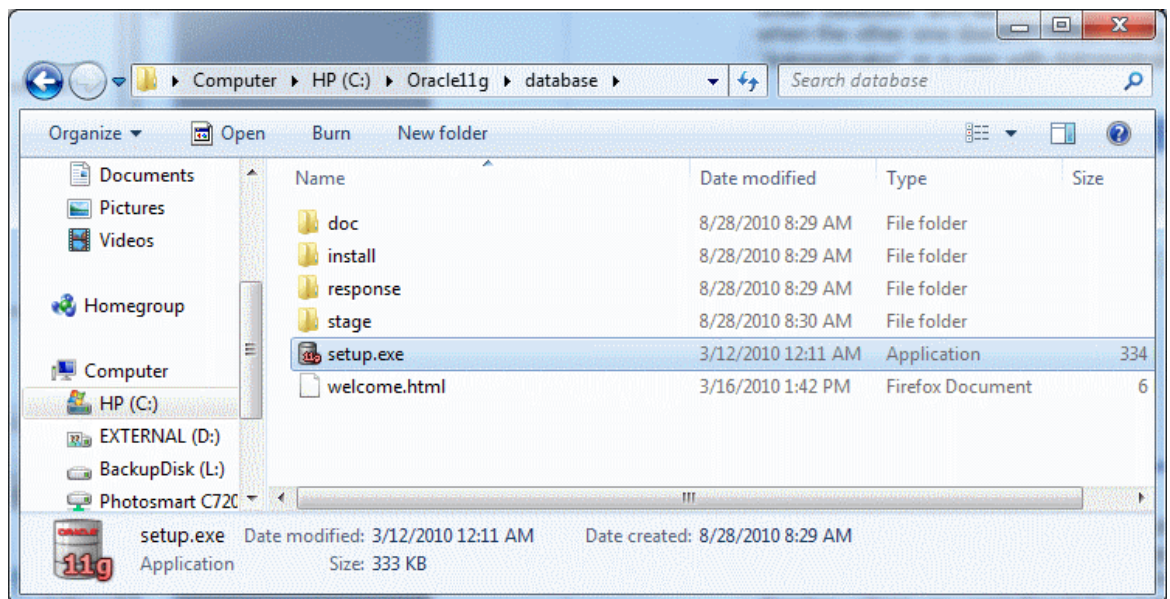
Step 4: Installing and Configuring Oracle

Introduction This section contains step-by-step instructions for installing Oracle 11g from the unzipped files on your hard disk.

Before beginning the install you should download the latest Windows updates and close other applications on the machine. Closing other applications frees up resources for the install. If you have not done so already you should temporarily disable any on-access scanning in your antivirus software.

Install Oracle Next launch the Oracle Installer.

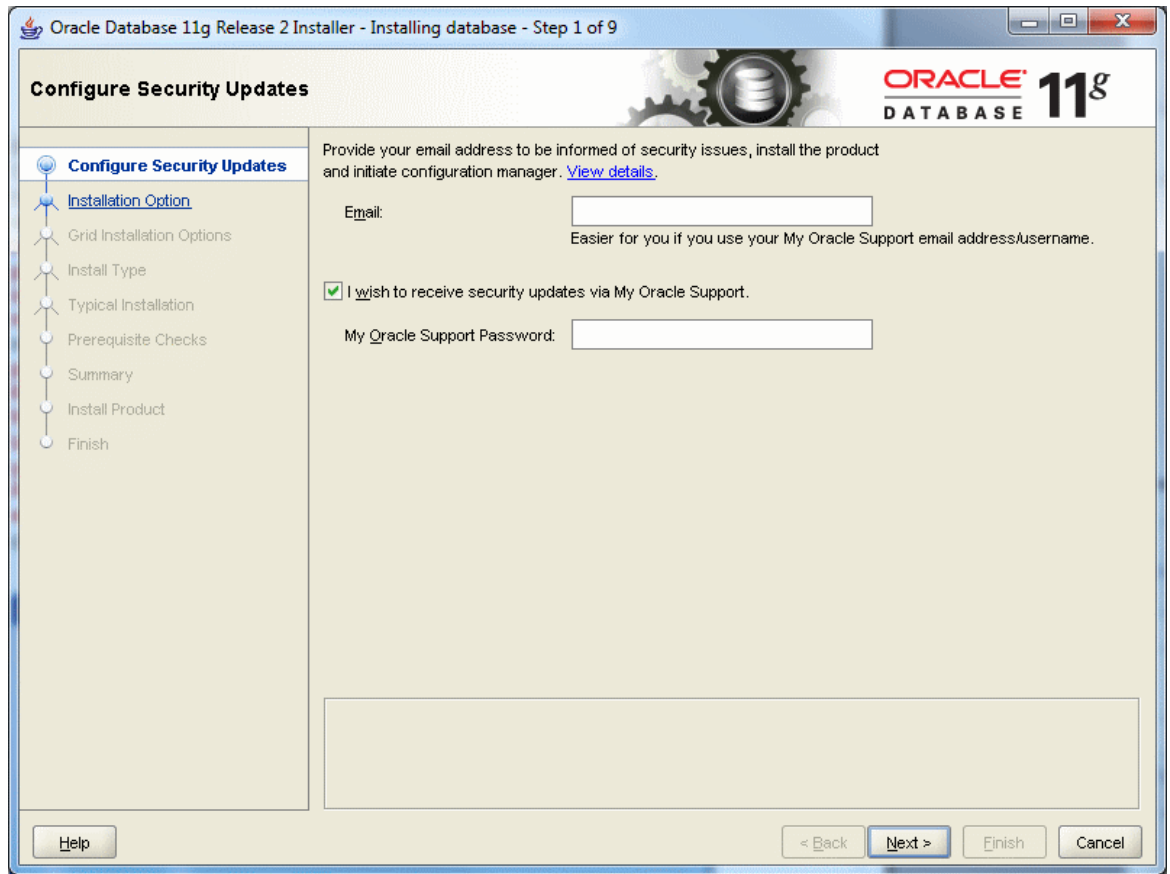
Go to the database directory and double click on the file *setup.exe*.



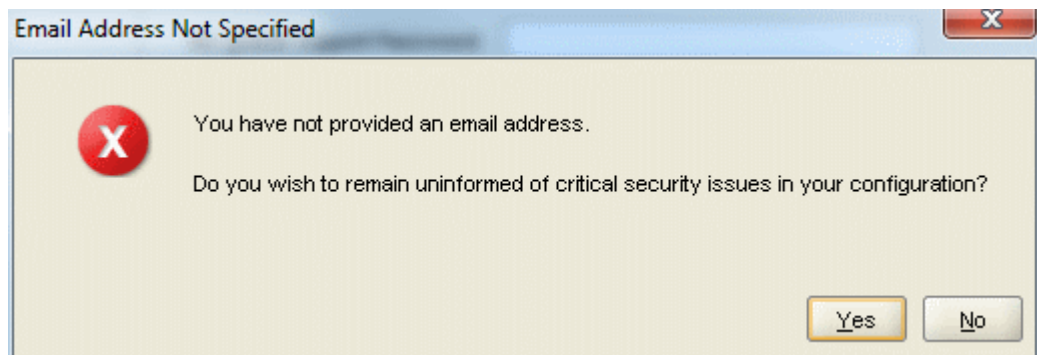
If the setup.exe program launches, but the Oracle installer doesn't start after a couple of minutes, there may be a problem with your Java installation. When using Vista, be sure to run the setup as "Administrator" or a user with Administrative privileges.

It may take several minutes for the Oracle Universal Installer to launch, during which time you will see a DOS-style text window reporting the checks before the launch.

When the Oracle Universal Installer launches, you will see a screen like the following.

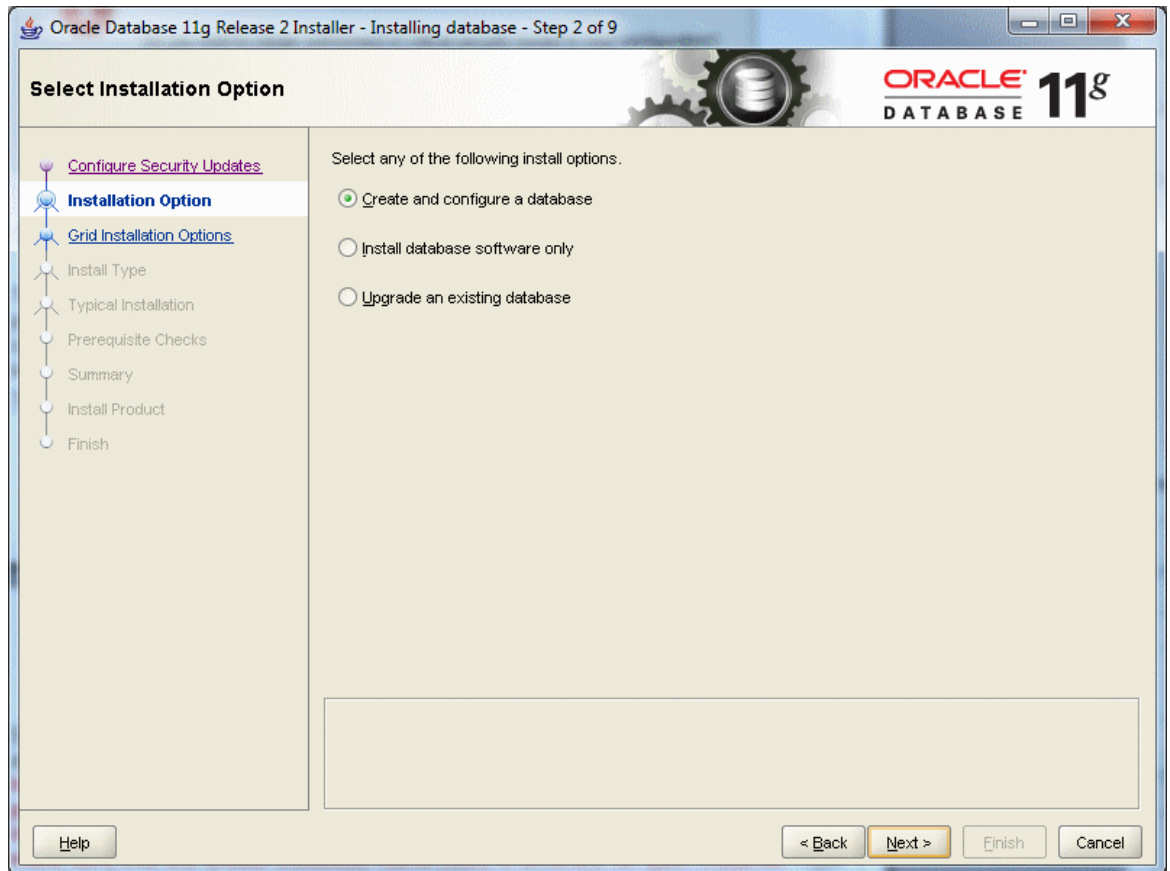


Click the **Next >** button, and you will see the following warning:



Click the **Yes** button.

The "Step 2 of 9" screen appears.

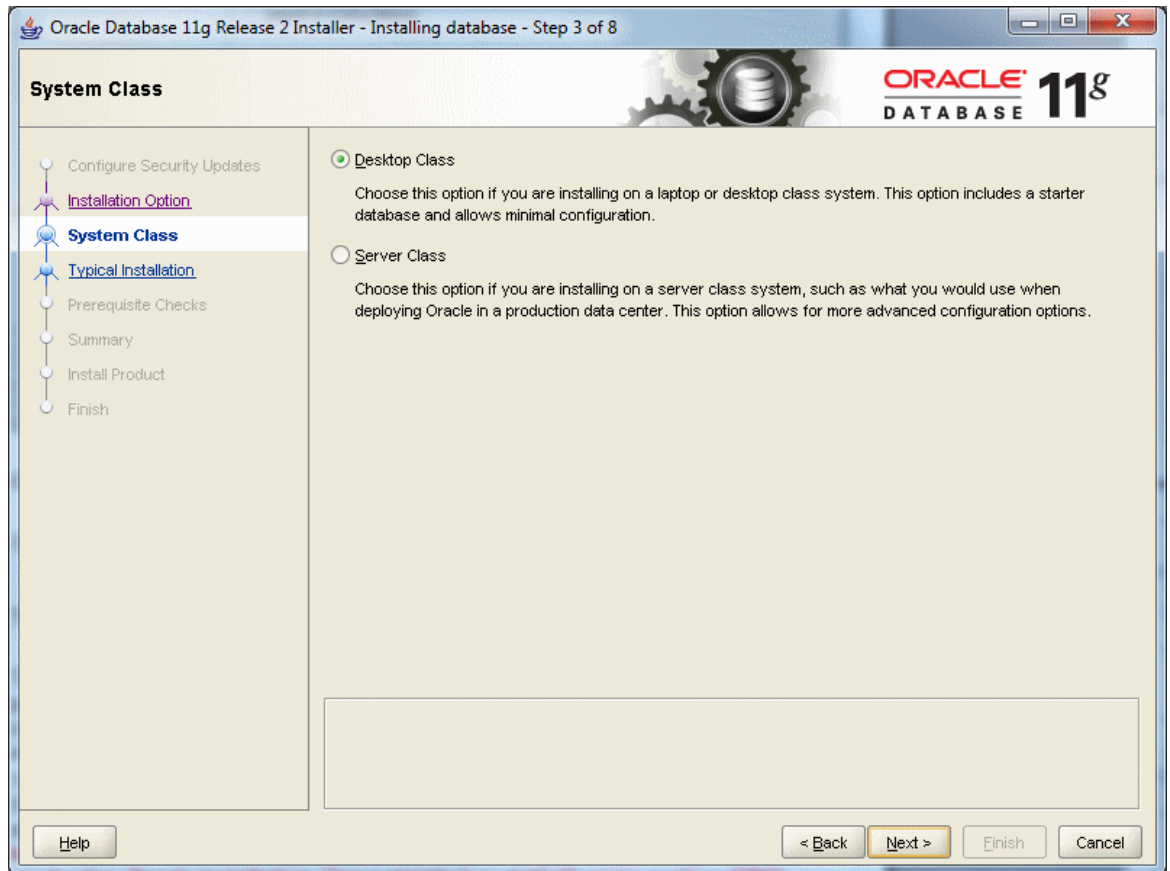


Ensure that the following radio button is selected:

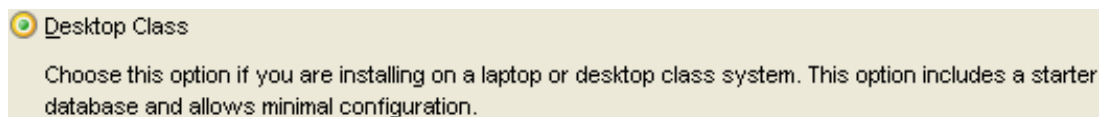
Create and configure a database

Then click the button.

The following screen appears.

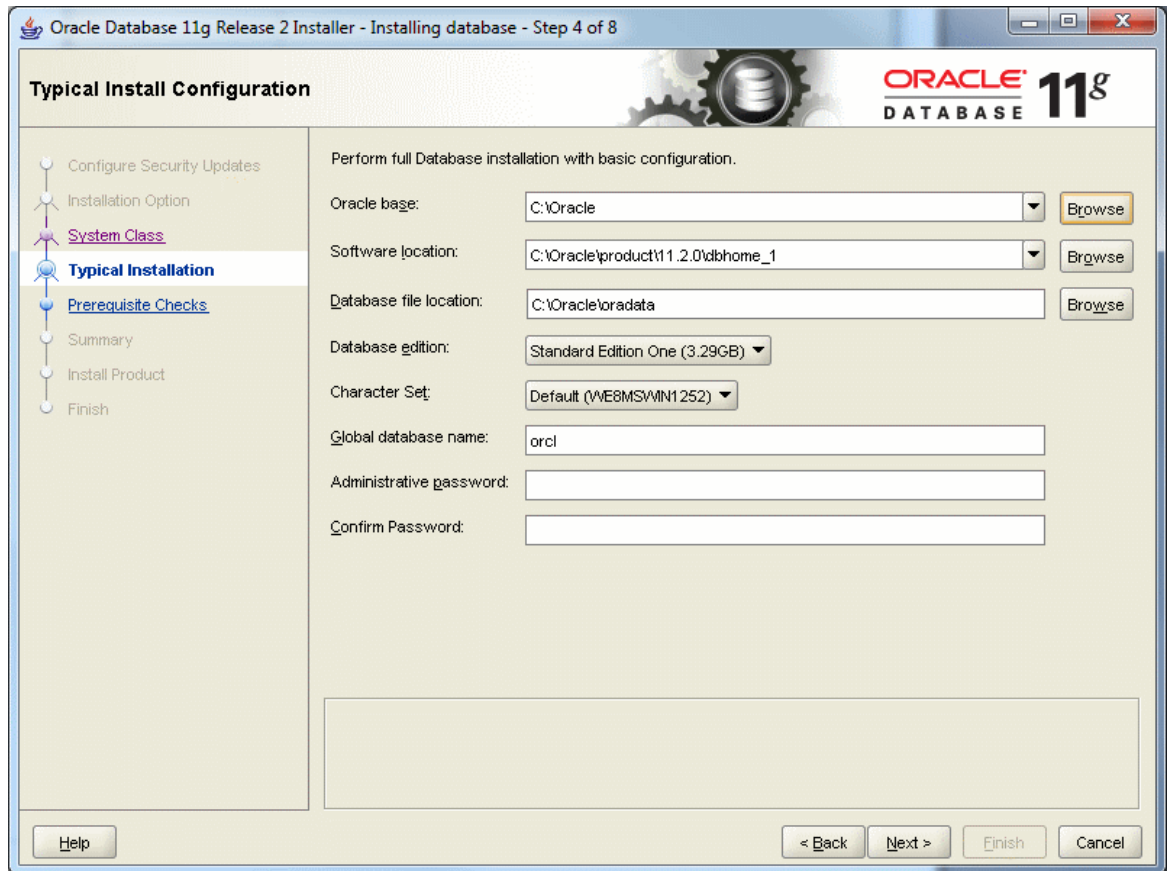


Ensure that the following radio button is selected:



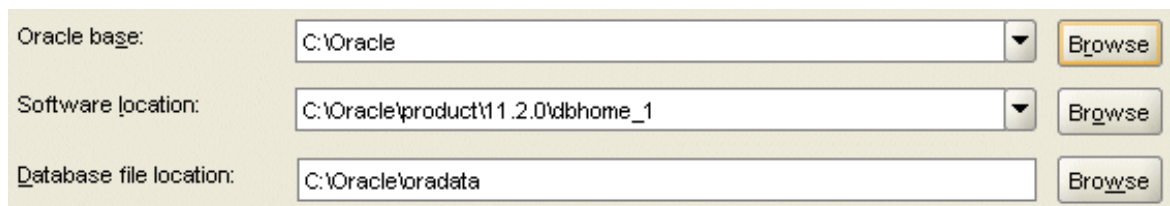
Then click the  button.

The next screen titled "Installing database - Step 4 of 8", appears.



There are many options to specify here, so I will go over each in turn.

For purposes of the BU courses, it is usually sufficient to give an Oracle base of "C:\Oracle". When you do so, "Software location" and "Database file location" will be updated automatically to use this base. When the Oracle base has been changed, you should see the following:



Unless you are in need of the advanced features of Enterprise Edition or Standard Edition, choose Standard Edition One for your database edition. Note that at Boston University, Enterprise Edition is only required for CS674 Database Security.




Do not modify the character set, and choose "ORCL" for your global database name. Type in a simple Global Database Name. **Do not use the domain.name Global Database Name format (e.g. myDomain.mySID) unless you have a domain controller and static IP for Oracle, as you would likely have in a production Oracle installation. Use a simple "un-dotted" name such as ORCL instead. If you have more than one Oracle instance running on your machine, make sure that the Global Database Name (SID) is different for each instance.**

Global database name:

Type in and confirm an administrative password that you will remember. **You will need this password later to create your user login, so you should write the password down. Keep the password simple. Security is not an issue for your student database, but forgetting your password can be a real problem if you can't login to your database later. For class databases I recommend the memorable password "password". If you don't follow these instructions and later can't remember your password see Appendix D for how to reset your SYSTEM password on Windows platforms without reinstalling Oracle.**

Administrative password:

Confirm Password: 

After all options have been entered, your screen will look like the following:

Perform full Database installation with basic configuration.

Oracle base:

Software location:


Database file location:

Database edition:

Character Set:

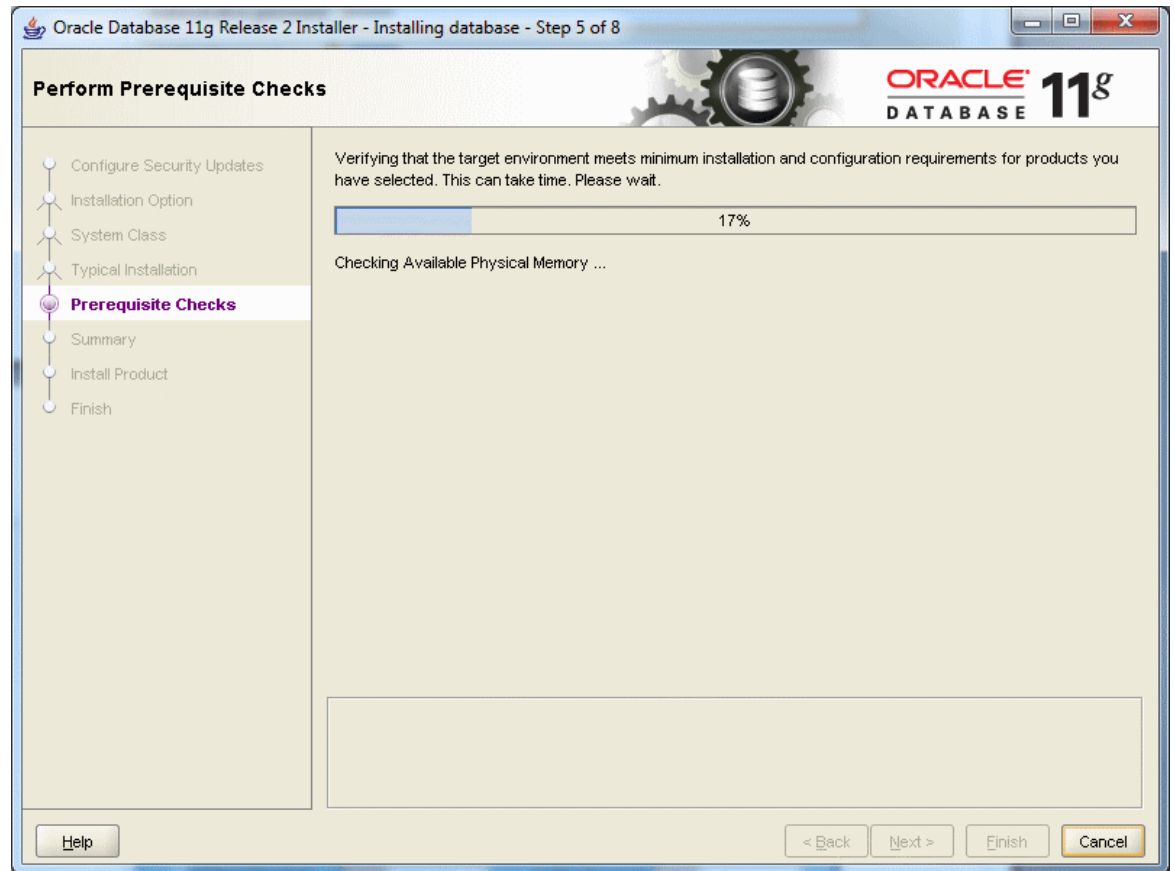
Global database name:

Administrative password:

Confirm Password: 

Click the button.

Oracle will now perform prerequisite checks to ensure that your system is compliant with its requirements.

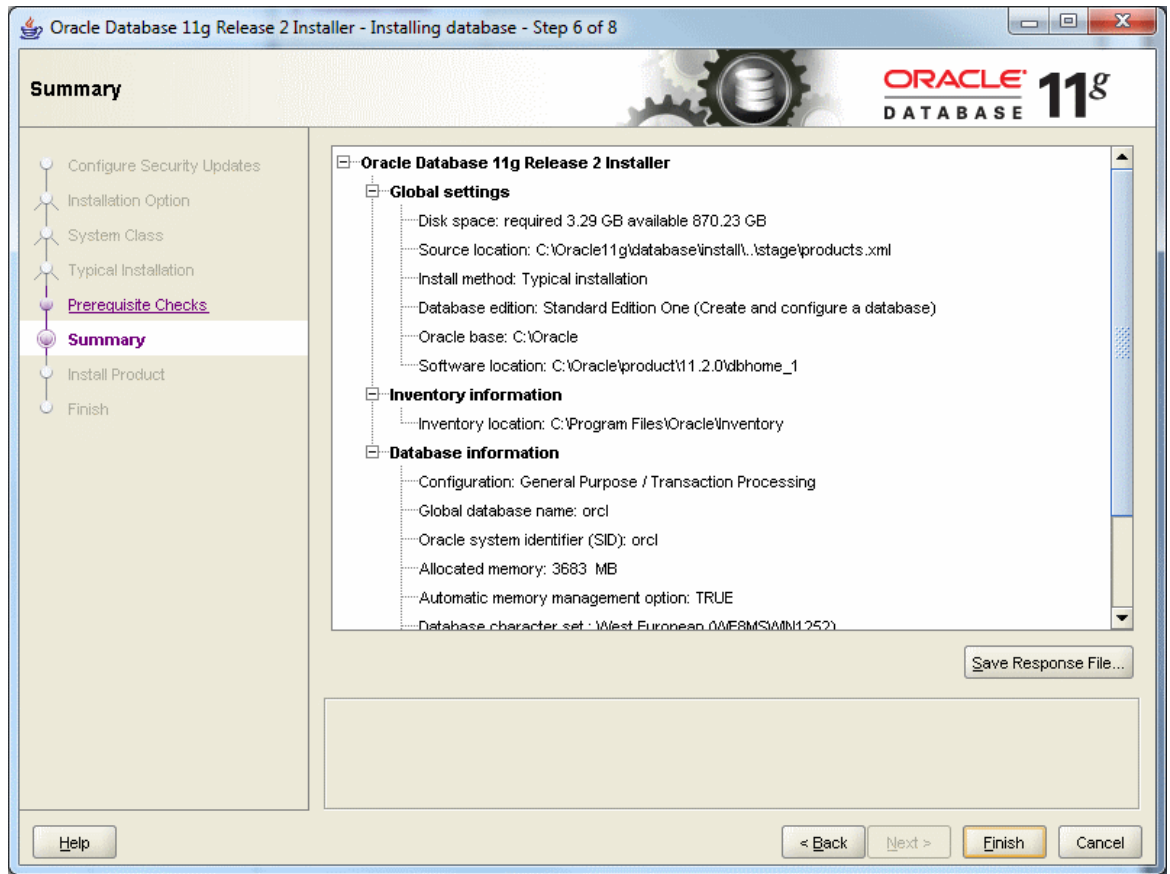


If all checks pass, you will only see this screen for a short time.

If all checks do not pass, the screen will inform you in what areas your system is not compliant with Oracle's requirements. The fix for each of these will be individualized to your system. A common prerequisite failure is the fact that your machine does not have a static IP address. Many desktops and laptops dynamically obtain their IP address through DHCP, and if so, you will need to install and the Microsoft Loopback Adapter with a static IP address. Reference Appendix B for more information on installing and configuring the Microsoft Loopback Adapter.

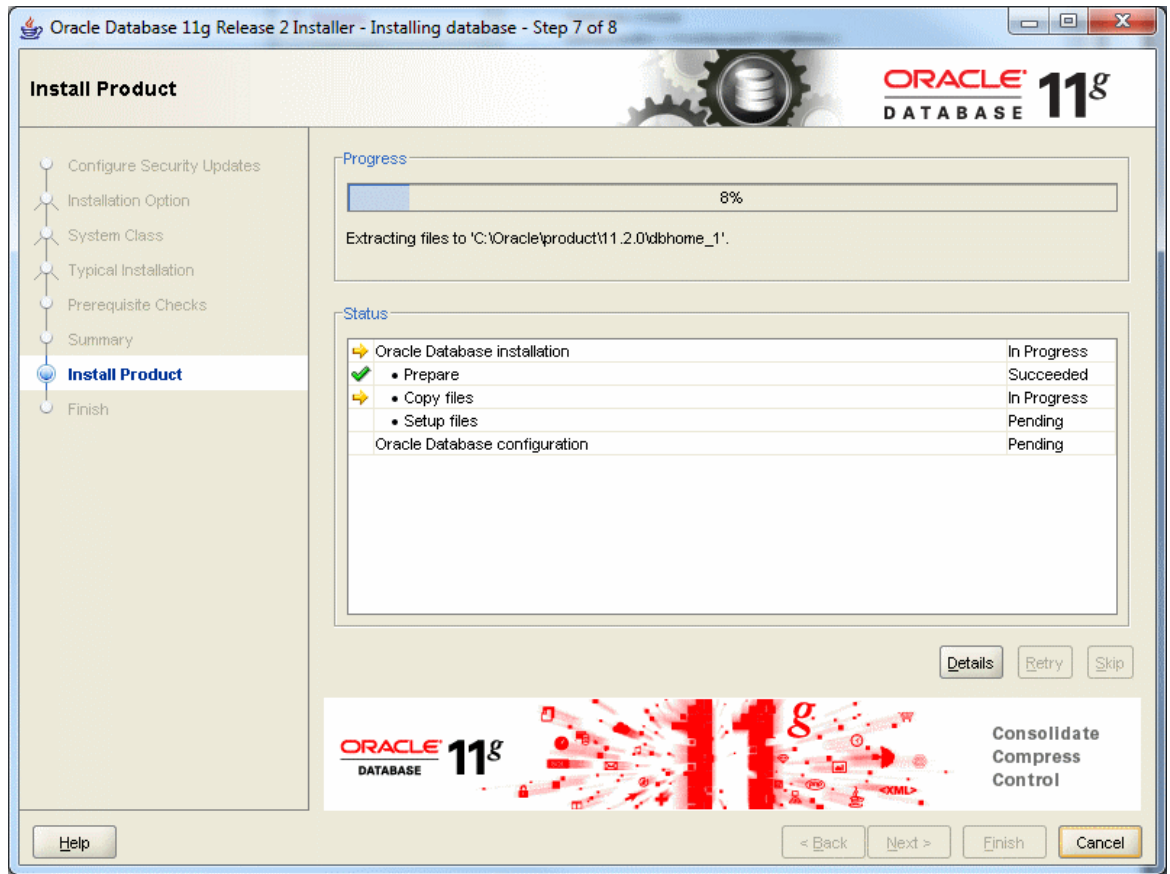
Another common prerequisite failure is that your PATH environment variable will exceed the maximum after Oracle appends its own directory.

After all prerequisite checks pass, you will see a summary screen similar to the following:



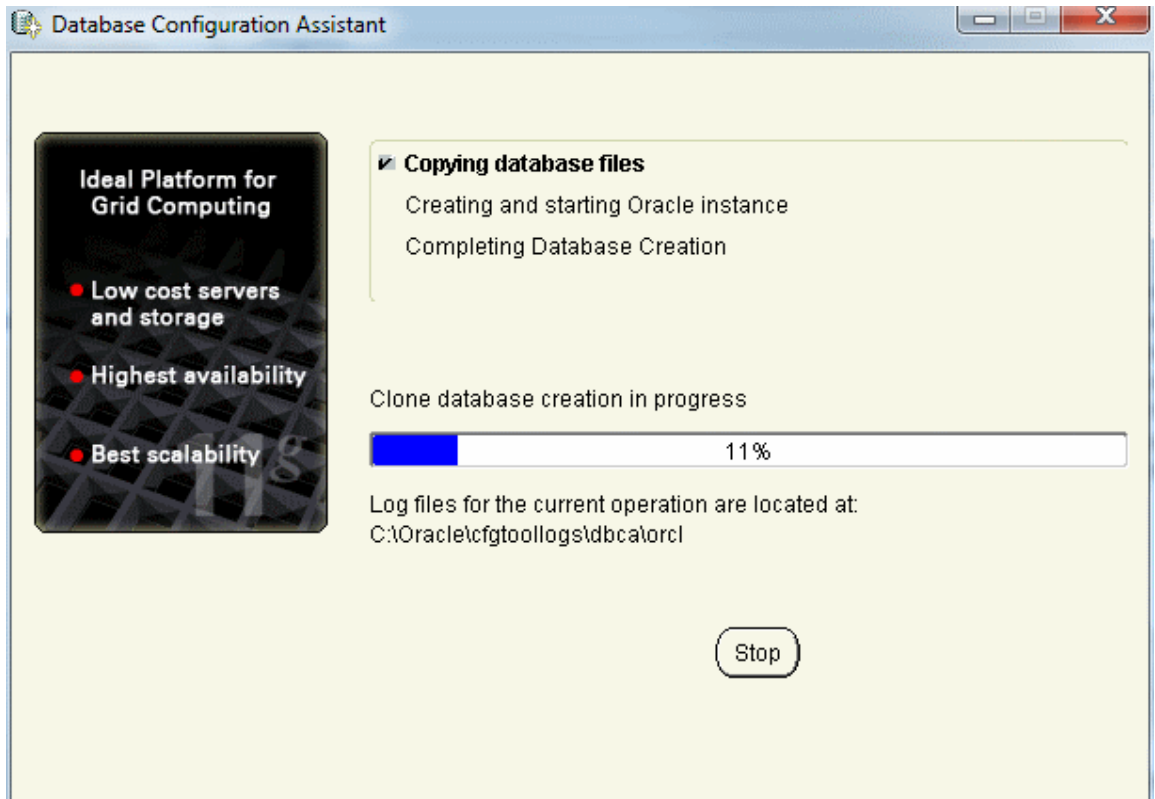
After reviewing the installation options, click the  button to begin installation.

You will see an installation screen with a progress bar, and Oracle is now performing many steps to ensure a complete and successful installation. This step will take from between several minutes to an hour or so, depending on the speed of your computer. I usually try to glance over at the screen from time to time to see if there have been any exceptions that cause the Installer or Windows to ask me questions.



Configure Oracle

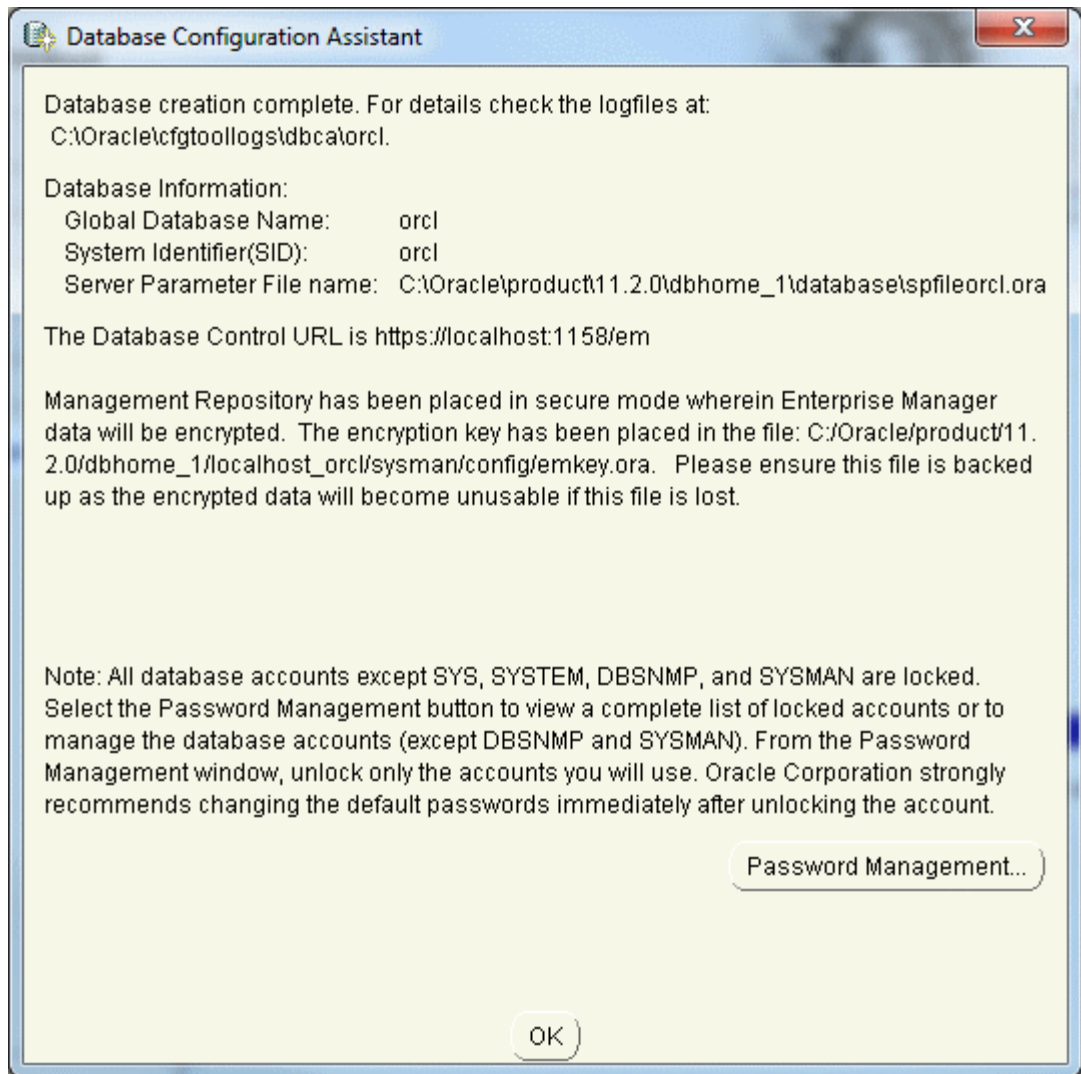
When the main install finishes, the Oracle installer will launch the Database Configuration Assistant window.



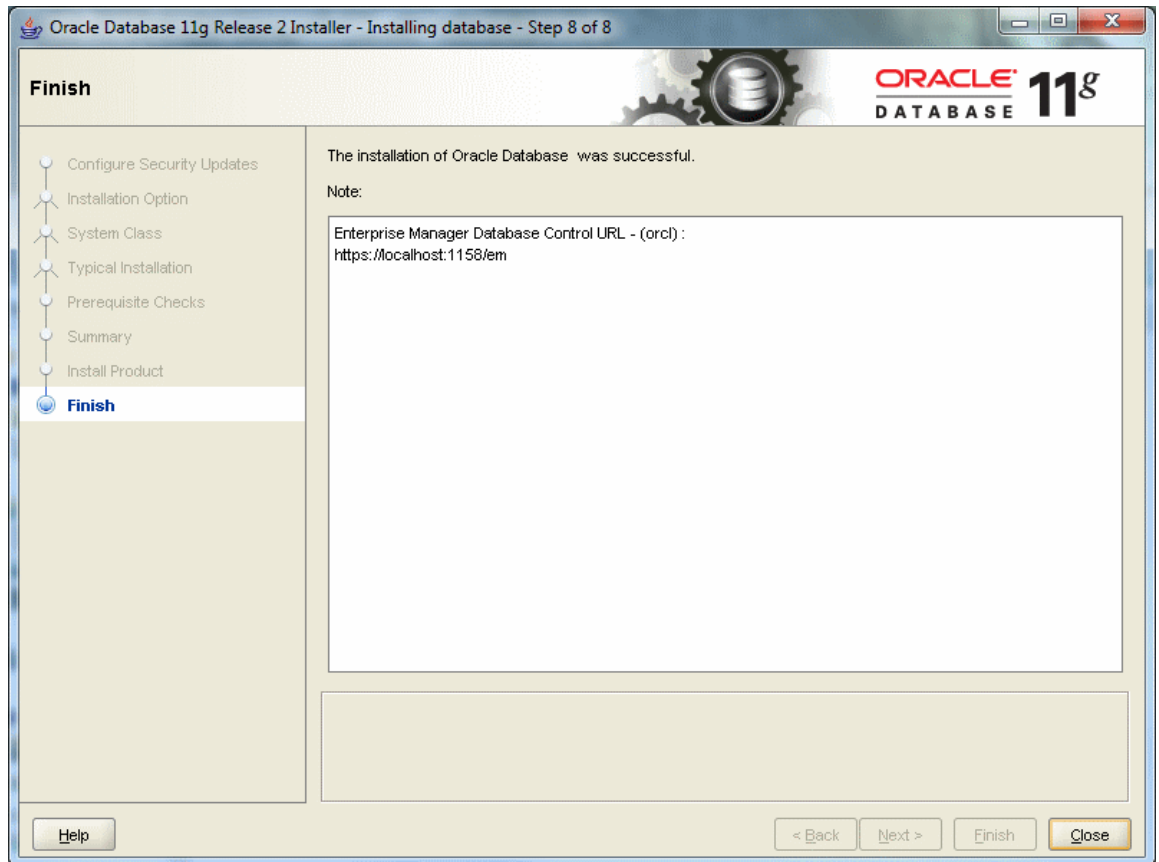
If you see the following popup from Windows Firewall, just click *Unblock*. You may see this several times. Your machine may be very sluggish when the database creation assistant is running. This is normal.



Typically the database configuration assistant will complete successfully without requiring any interaction from you. When completed, the Oracle installer will display the following window:



Click the "OK" button, and you will see the following screen, which indicates that the database configuration was successful:



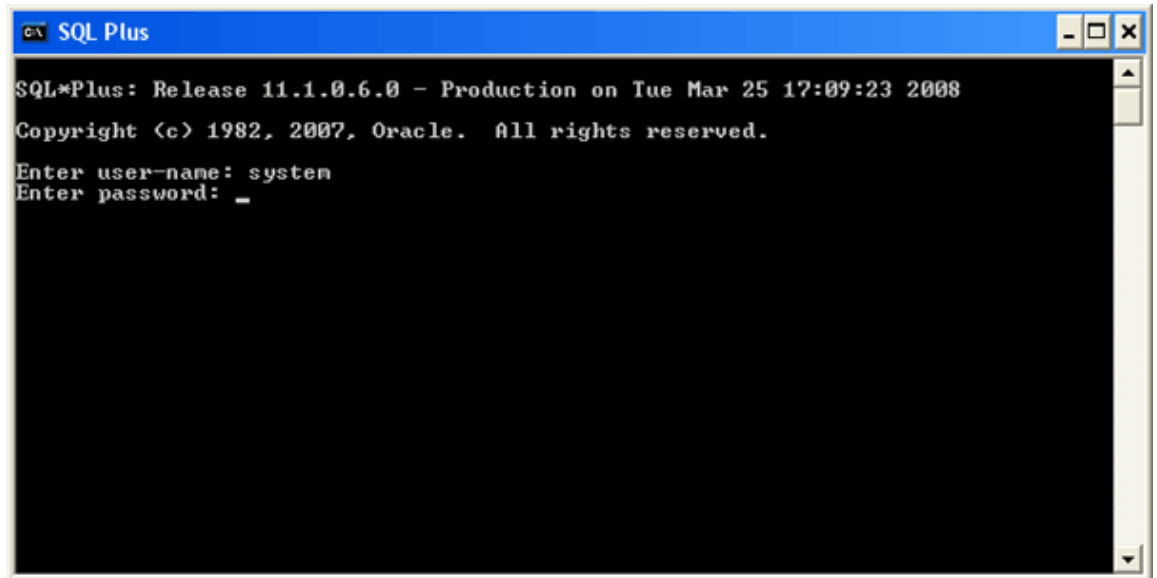
Click the "CLOSE" button, and the Oracle installer will exit.

The final step to verify a successful install is to connect to our new Oracle instance.

- Go to:
- Start / All Programs/Oracle – OraDb11g_home1 / Application Development and launch SQLPlus.

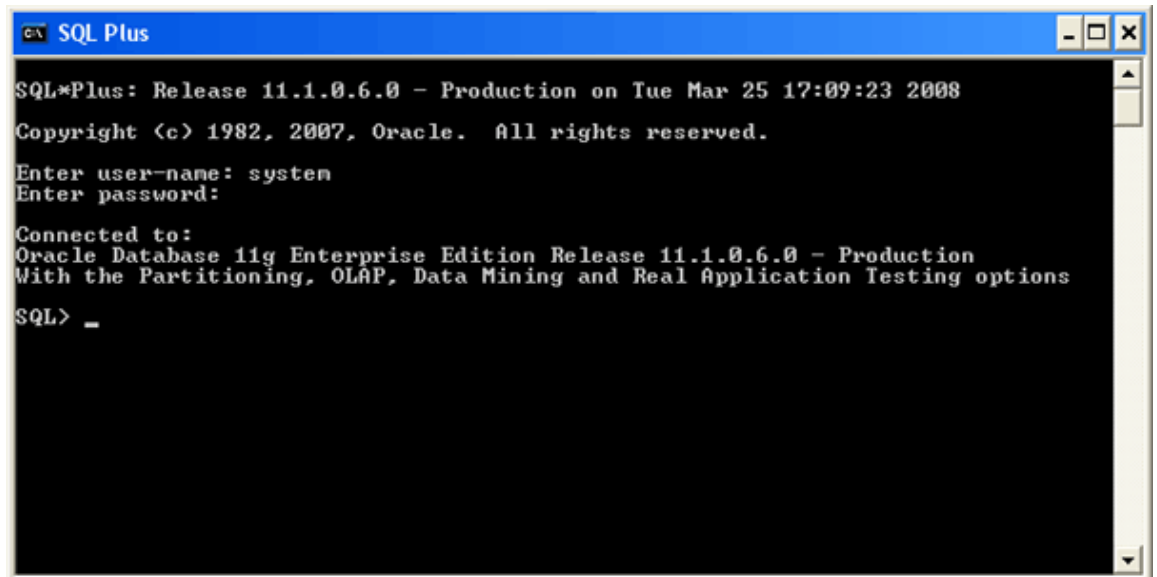
Then fill in the username with SYSTEM, and type in the password that you entered during the install. You do not need to enter a Host String if your Oracle database is on the same machine as SQLPlus.

Then click OK.



```
SQL*Plus: Release 11.1.0.6.0 - Production on Tue Mar 25 17:09:23 2008
Copyright (c) 1982, 2007, Oracle. All rights reserved.
Enter user-name: system
Enter password: _
```

You should see a screen like the following:



```
SQL*Plus: Release 11.1.0.6.0 - Production on Tue Mar 25 17:09:23 2008
Copyright (c) 1982, 2007, Oracle. All rights reserved.
Enter user-name: system
Enter password:
Connected to:
Oracle Database 11g Enterprise Edition Release 11.1.0.6.0 - Production
With the Partitioning, OLAP, Data Mining and Real Application Testing options
SQL> _
```

Congratulations! You have now successfully installed Oracle, started the database and connected to it with the SQLPlus client that we will use in this course.

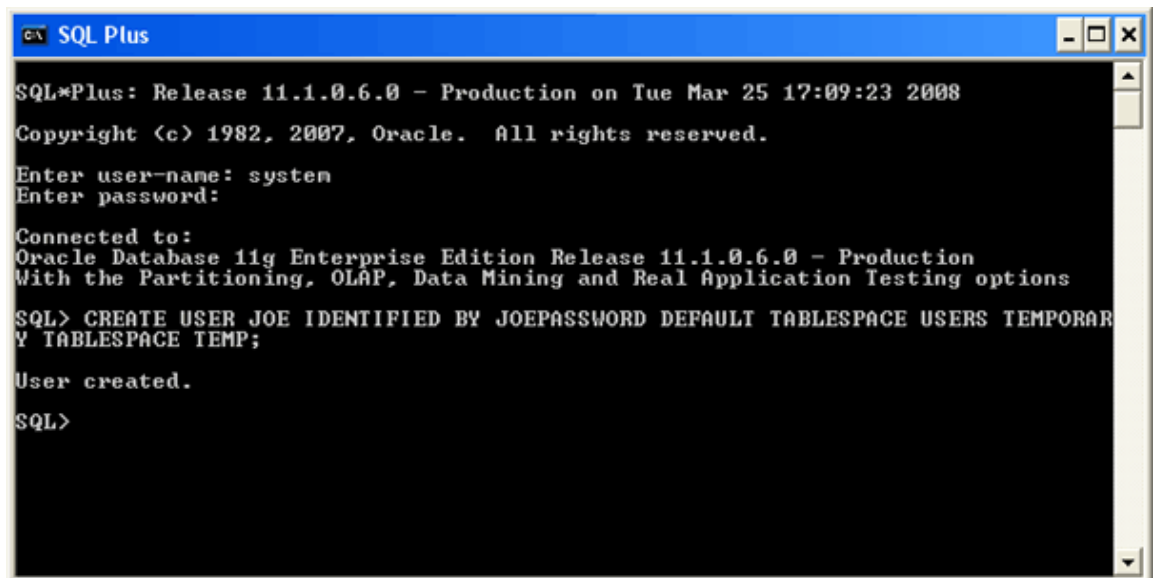
Create Users

The SYSTEM account that we are now logged in under is the initial DBA account, and it has so many privileges that it is risky for routine use. We will next create an ordinary user of the sort that we will use for this class. I will call this user "JOE", but you can substitute any name. Choose a password that you can remember. Just type in the

following:

```
CREATE USER JOE IDENTIFIED BY JOEPASSWORD DEFAULT TABLESPACE  
USERS TEMPORARY TABLESPACE TEMP;
```

This SQL command creates user JOE with password JOEPASSWORD and sets up two important defaults for JOE's account. Note the semicolon at the end. Upper case is conventional for SQL in the Oracle community, though for Oracle SQL case doesn't matter except in quoted strings. When you have typed this command and hit return the screen should look like this:



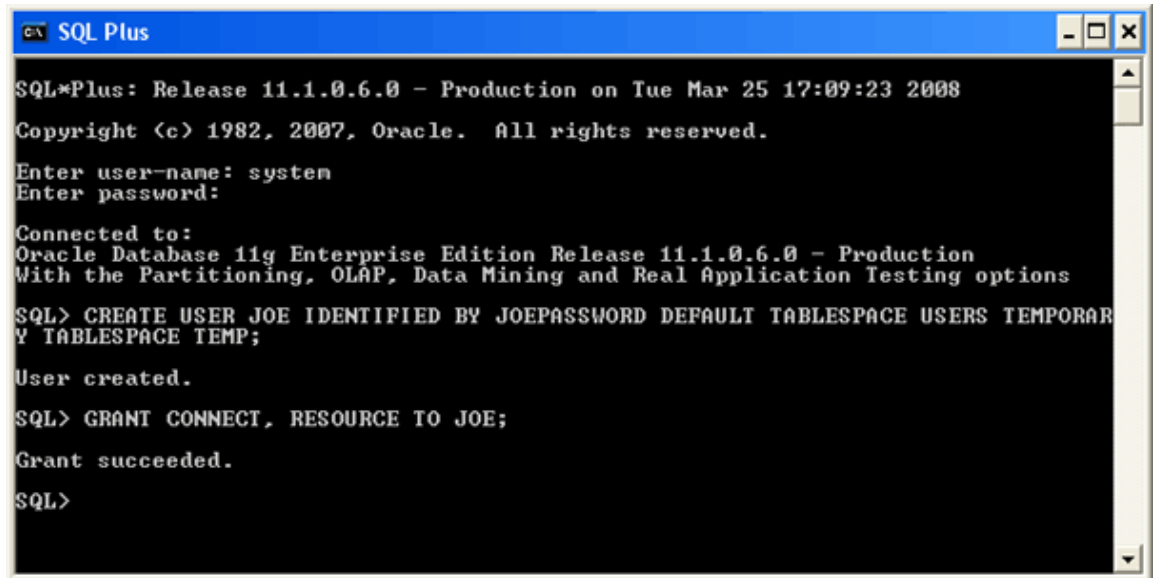
```
SQL*Plus: Release 11.1.0.6.0 - Production on Tue Mar 25 17:09:23 2008  
Copyright (c) 1982, 2007, Oracle. All rights reserved.  
Enter user-name: system  
Enter password:  
Connected to:  
Oracle Database 11g Enterprise Edition Release 11.1.0.6.0 - Production  
With the Partitioning, OLAP, Data Mining and Real Application Testing options  
SQL> CREATE USER JOE IDENTIFIED BY JOEPASSWORD DEFAULT TABLESPACE USERS TEMPORAR  
Y TABLESPACE TEMP;  
User created.  
SQL>
```

Connect To Oracle

Next we will give user JOE the privilege to connect to the database and the privilege to create database resources. Type

```
GRANT CONNECT, RESOURCE TO JOE;
```

Again, notice the semicolon at the end. Your SQLPLUS screen should now look about like this:

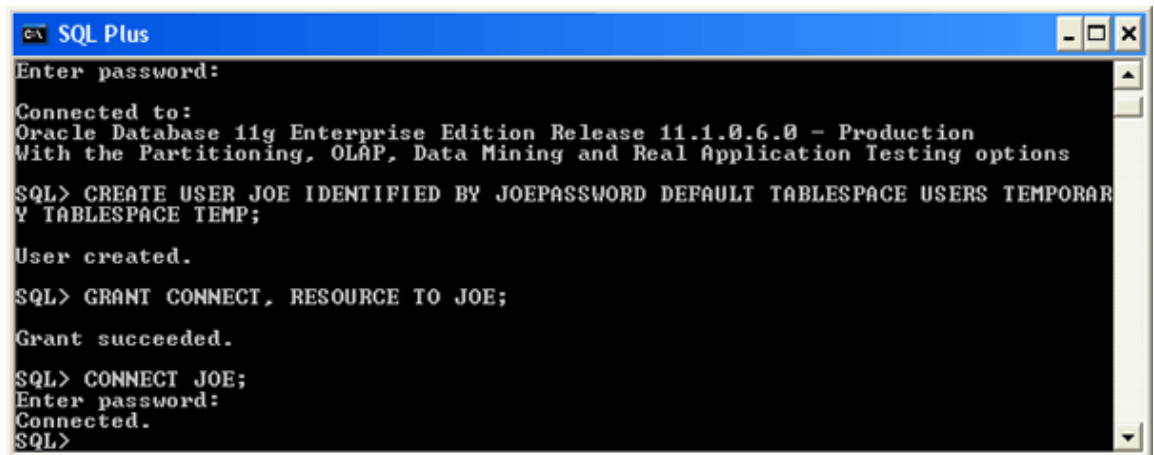


```
SQL*Plus: Release 11.1.0.6.0 - Production on Tue Mar 25 17:09:23 2008
Copyright (c) 1982, 2007, Oracle. All rights reserved.
Enter user-name: system
Enter password:
Connected to:
Oracle Database 11g Enterprise Edition Release 11.1.0.6.0 - Production
With the Partitioning, OLAP, Data Mining and Real Application Testing options
SQL> CREATE USER JOE IDENTIFIED BY JOEPASSWORD DEFAULT TABLESPACE USERS TEMPORAR
Y TABLESPACE TEMP;
User created.
SQL> GRANT CONNECT, RESOURCE TO JOE;
Grant succeeded.
SQL>
```

We will now disconnect as SYSTEM and connect as JOE, in one command. Type

```
CONNECT JOE;
```

Oracle will then ask you for JOE's password. Enter JOEPASSWORD or whatever you provided in the IDENTIFIED BY clause when you created your user. Your SQLPlus screen should now look about like this:



```
Enter password:
Connected to:
Oracle Database 11g Enterprise Edition Release 11.1.0.6.0 - Production
With the Partitioning, OLAP, Data Mining and Real Application Testing options
SQL> CREATE USER JOE IDENTIFIED BY JOEPASSWORD DEFAULT TABLESPACE USERS TEMPORAR
Y TABLESPACE TEMP;
User created.
SQL> GRANT CONNECT, RESOURCE TO JOE;
Grant succeeded.
SQL> CONNECT JOE;
Enter password:
Connected.
SQL>
```

You are now connected to Oracle as an ordinary user, and you can do your exercises, experiment, or do whatever you want with Oracle. Have fun!

If you want to create another user, just connect as SYSTEM, and do what we did to create user JOE.

Congratulations! You are ready to work in Oracle.

Troubleshooting Common Installation and Usage Issues

I forgot my password.

If you forget your password, do not panic, because you can log in a different way and change your password. Your access to the computer onto which you installed Oracle means that you are able to login to Oracle as the SYS user without a password. Your privileges are akin to a master DBA in a production environment. See Appendix D for how to login as the SYS user without a password to reset your SYSTEM and user passwords.

Because you typically install and use your own database locally in this course, security is not usually an issue for your student database. For class databases it is recommended to use an easily memorized password, such as “password”.

The prerequisite checks tell me that I do not have a static IP address.

Many desktops and laptops dynamically obtain their IP address through DHCP, and if so, you may need to install the Microsoft Loopback Adapter with a static IP address. Consult Appendix B for more information on installing and configuring the Microsoft Loopback Adapter.

The installer fails with a report that it cannot find a file.

If the installer progress through a part of the installation, then reports that it cannot find a file, the most likely cause is that the directory from which you are installing only has the contents from the first download zip file. You may have unzipped the second zip file into another directory. For your Oracle installation to succeed, the contents of the extraction of both zip files must end up in the same directory. Oracle has provided you with two files for a better download experience; nevertheless, the installer expects there to be a single directory structure containing all of the contents from both zip files. Your first option is to unzip each zip file into the same directory. The second option is to unzip each zip file into different directories, but then manually copy the contents of the second directory into the first.

The prerequisite checks tell me that my PATH exceeds the recommended length.

If the prerequisite checks report a warning similar to the following:

Environment variable: "PATH" - This test checks whether the length of the environment variable "PATH" does not exceed the recommended length.

Expected Value

: XXXX

Actual Value

: YYYY

then Oracle’s attempt to add its installed directory to the path will not succeed, because the value of the PATH variable is already too long. The “Expected Value” in the error message indicates the maximum allowable length, and the “Actual Value” indicates what the length will be when Oracle’s entry is added. See Appendix E for details on how to reduce the length of your PATH environment variable to rectify this issue.

Appendix A: Configuring Oracle Startup Options

Your computer may become sluggish after installing Oracle. This can be normal when Oracle is running on a machine with limited resources. When Oracle first starts up it loads the database and performs other initialization. If you have adequate memory to support Oracle and the other programs that you are running on your computer the sluggishness will go away when Oracle has finished these startup operations. The sluggishness also goes away when Oracle is stopped. You will need to have the Oracle instance running only a fraction of the time, so you can stop Oracle when you aren't using it.

You can easily start and stop Oracle by starting and stopping the corresponding service. For an instance named *SID*, this service is called *OracleServiceSID*. Just right click on the service such as *OracleServiceSID* in the Services control panel and select *Stop* or *Start*. When the service is stopped it also stops the corresponding *oracle.exe* process, and when the service is started it also starts the process.

To get to the Services control panel in Windows, first open the Control Panel. If you are on Windows XP, it's easier if you click the *Switch to Classic View* look. Then on XP you can launch the services control panel by going to *Start* then *Settings* then *Control Panel* then *Administrative Tools* then *Services*. If you're on Windows 2000, it's already in classic view. In some cases, you may see a *Services* control right there in the control panel. If so, click on it and the services will come up. If you don't see *Services*, then you need to click on the *Administrative Tools* icon first. Then you will see *Services* and can click on that.

Once the services control opens, you will see a list of services. Highlight the one that says *OracleServiceSID*, where *SID* is the name that you gave your Oracle service when you installed Oracle. Then click *Action/Stop*. On Windows 2000, it may just be *stop*. At any rate, just find where "stop" is and click it, and wait a while the Oracle service shuts down the Oracle instance. Of course, once you stop it, Oracle is no longer running, so you'll have to repeat these steps and click "start" to start it again. Or, just rebooting your computer should make the service start again.

Your computer will boot more slowly when Oracle is running, because the Oracle services are starting at boot time, and starting an Oracle instance can take a while, particularly on a notebook computer.

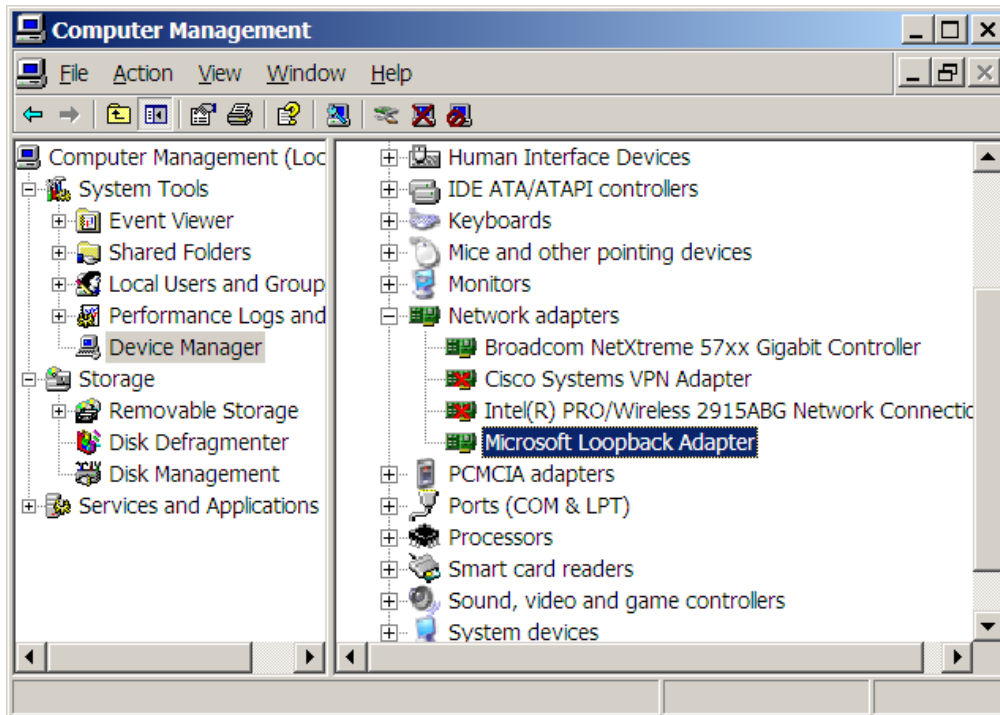
You can configure Oracle so that it doesn't start up when you boot your machine. Just open up the *OracleServiceSID...* service, as described above. But, instead of just clicking *stop*, you need to change the startup mode. Windows services have one of three startup modes -- *automatic*, *manual*, and *disabled*. By default, the Oracle service is in *automatic* mode. This means whenever you boot your computer, the service will start up automatically. You need to change it to *manual* to keep it from starting at boot time.

To do so, right click on the *OracleServiceSID...* service then click the *Properties* option. From there, you should see the *startup mode*, and be able to switch it from *automatic* to *manual*. Do the same to the *OracleDBConsole* service. Then next time you boot, those services won't start. Of course, if you set these services to *manual* startup mode, then when you need to use Oracle, you'll need to go into the services again and start them manually.

On recent Windows releases including XP you can also reduce the time to boot while leaving Oracle running by hibernating your computer rather than shutting it down and rebooting it. Restarting after hibernation will take a little longer with Oracle running, but not nearly as long as rebooting with Oracle in *automatic* startup mode.

Appendix B: Installing and Enabling the Microsoft Loopback Adapter

First, check if the Microsoft Loopback adapter is installed. On XP, from the Start menu, choose the Control Panel, then Administrative Tools, then Computer Management then Device Manager. A dialog box similar to the following should appear.

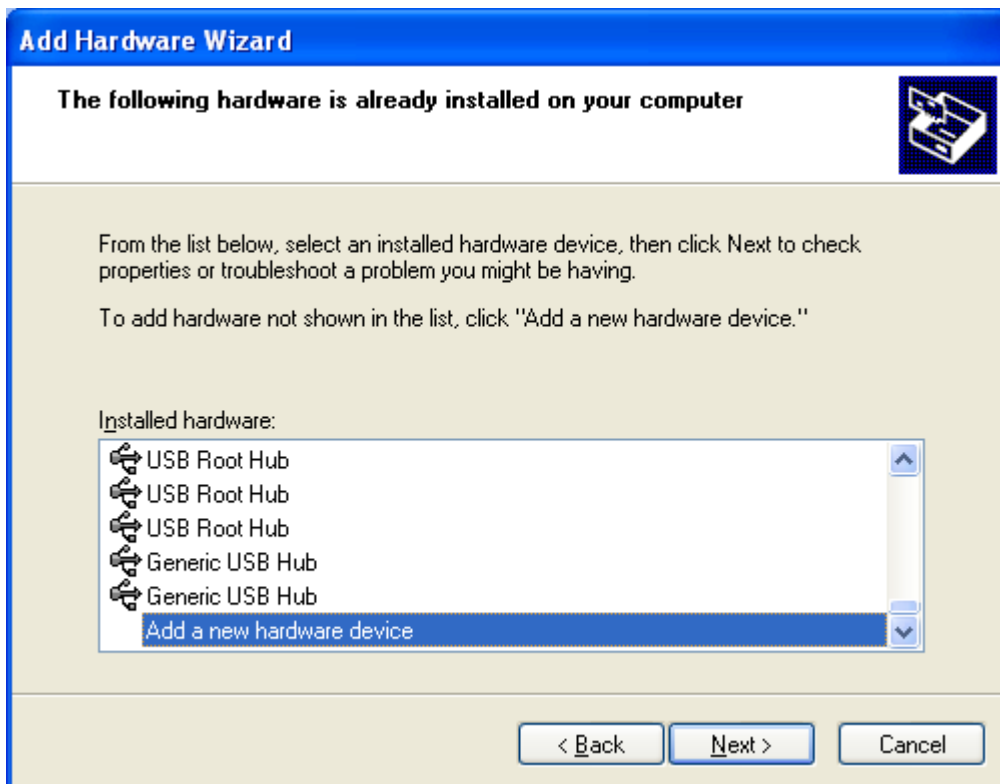


If the Loopback adapter is installed, it will appear there. If it is not installed then you need to install it. If it is installed, right click on *Microsoft Loopback Adapter*, and check that it is enabled. The right-click menu should include *disable*. If it includes *enable*, then you need to click on *enable* to enable the adapter. You can also do this through the *Properties* popup.

If the Loopback adapter does not appear in the dialog, install it by selecting *Add Hardware* in the Control Panel. The following dialog will appear:

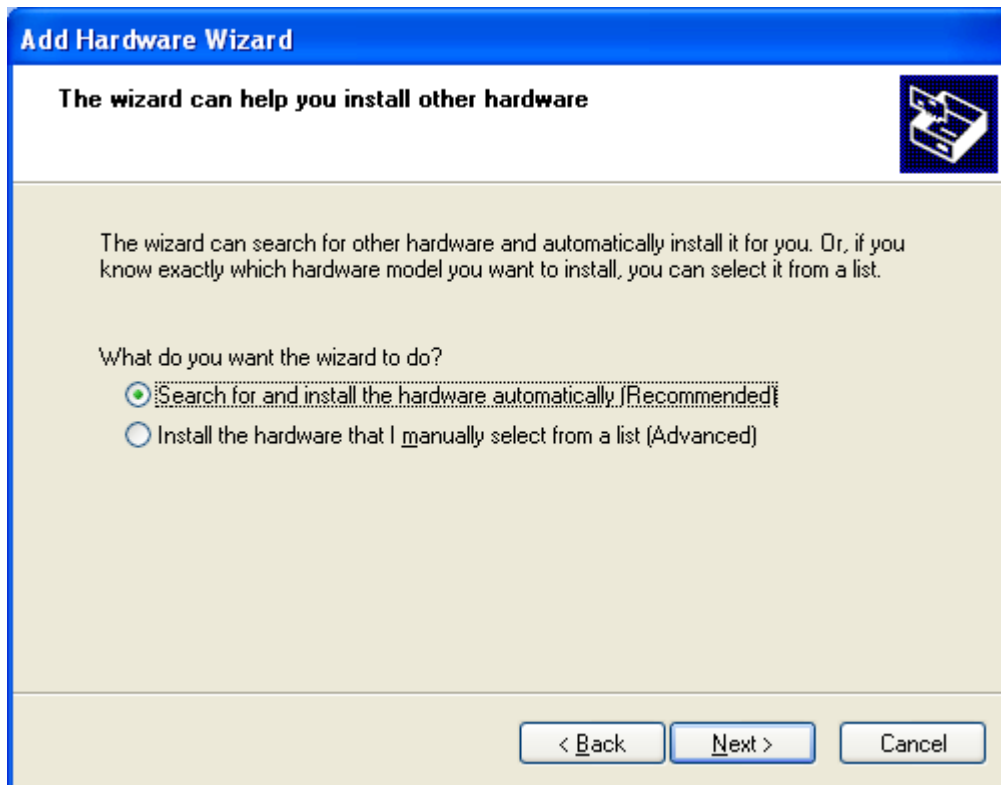


Select the *Yes* radio button and then *Next*. You will see a list of hardware already installed on your computer. Scroll down to the bottom of the list and select *Add a new hardware device*, and then click *Next*.

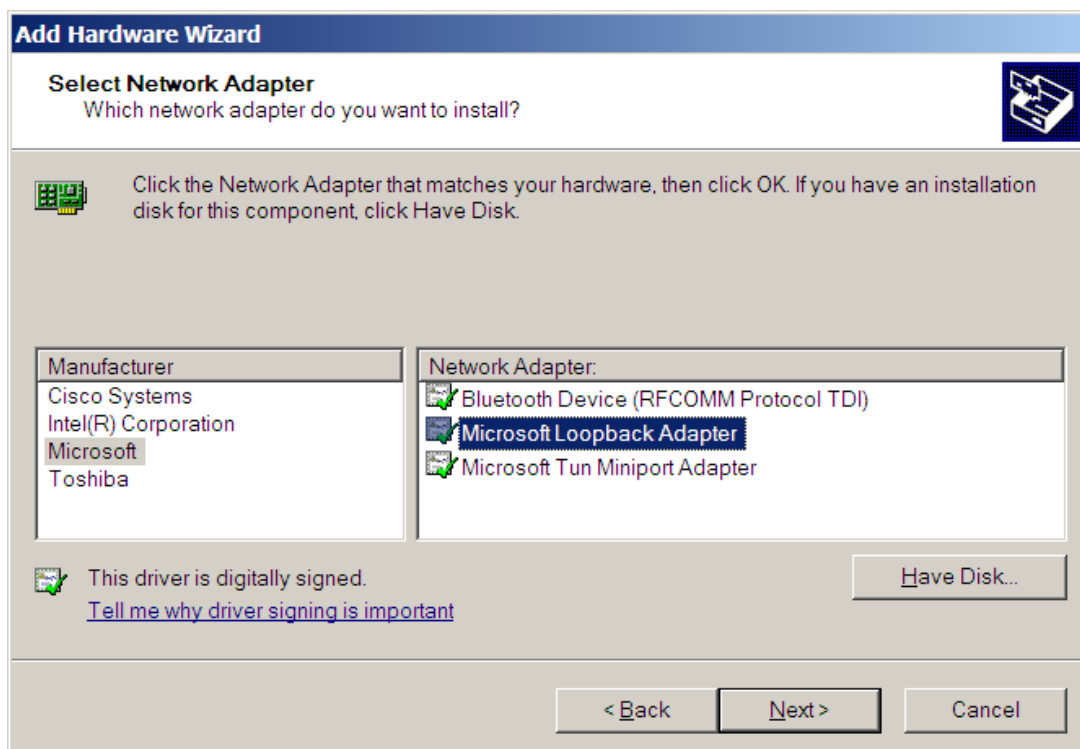
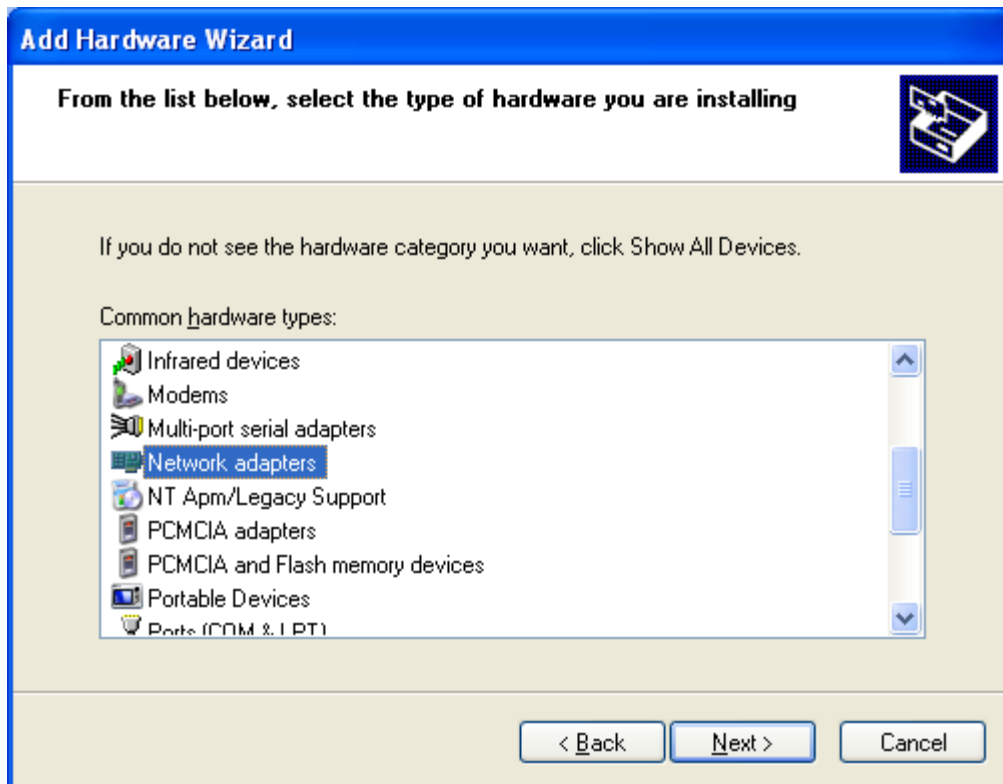


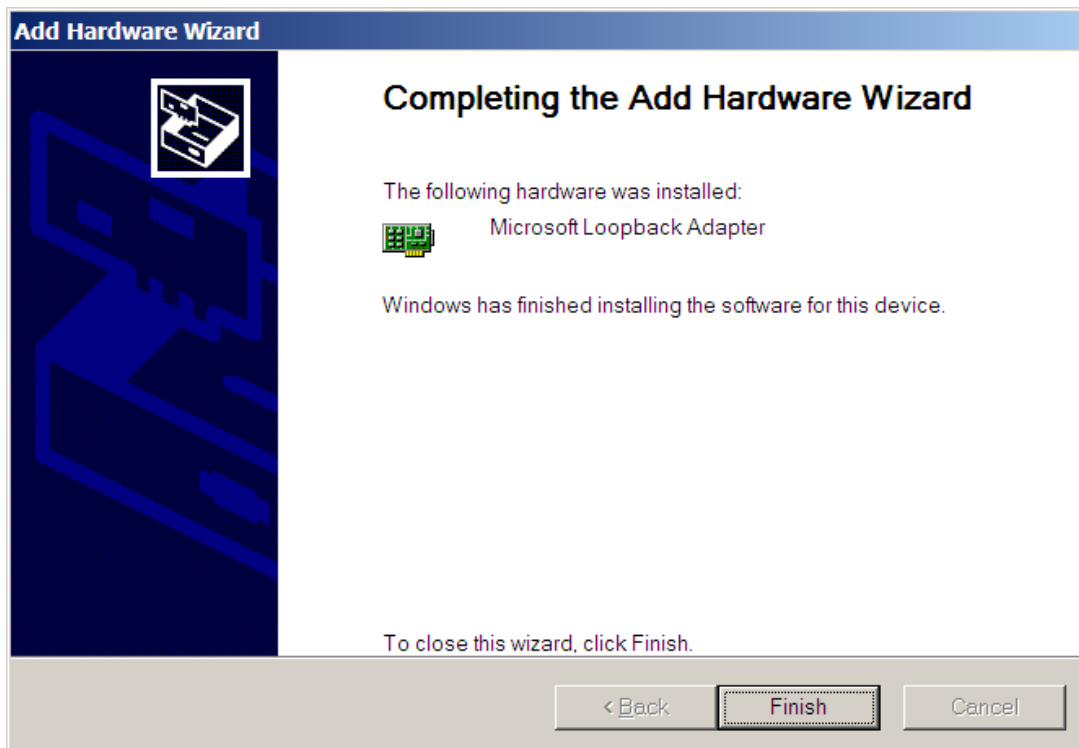
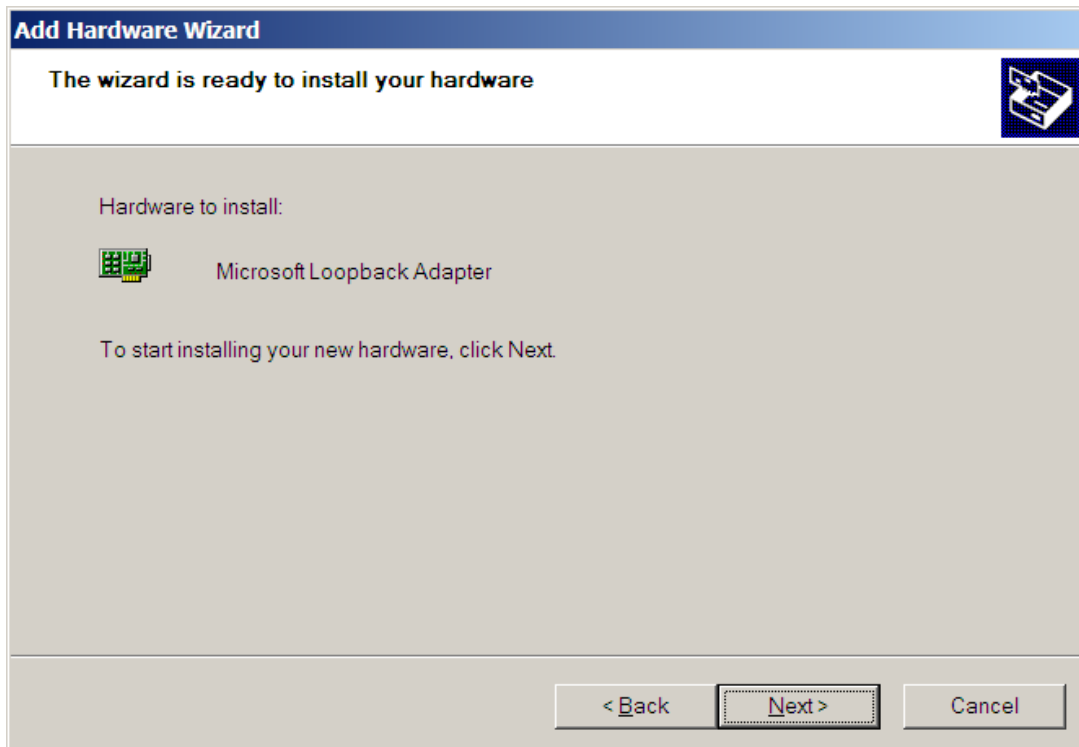
You will see a list of hardware already installed on your computer. Scroll down to the bottom of the list and select *Add a new hardware device*, and then click Next.

You will see the following screen. Select *Search for and install...* and click *Next*.



Select *Network adapters* then *Next*





Check Control Panel->Network Connections. If the Loopback Adapter still does not say 'Connected' then do the following steps.

To manually install the Microsoft Loopback adapter in Windows XP, follow these steps:

1. Click **Start**, and then click **Control Panel**.
2. If you are in Classic view, click **Switch to Category View** under **Control Panel** in the left pane.
3. Double-click **Printers and Other Hardware**, and then click **Next**.
4. Under **See Also** in the left pane, click **Add Hardware**, and then click **Next**.
5. Click **Yes, I have already connected the hardware**, and then click **Next**.
6. At the bottom of the list, click **Add a new hardware device**, and then click **Next**.
7. Click **Install the hardware that I manually select from a list**, and then click **Next**.
8. Click **Network adapters**, and then click **Next**.
9. In the **Manufacturer** box, click **Microsoft**.
10. In the **Network Adapter** box, click **Microsoft Loopback Adapter**, and then click **Next**.
11. Click **Finish**.

You next need to make sure that the Microsoft Loopback Adapter is properly configured.

1. Right-click My Network Places on the desktop and select Properties. This displays the Network and Dial-up Connections control panel.
2. Right-click the connection that was just created. This is usually "Local Area Connection 2". Select *Properties*.
3. On the General tab, select Internet Protocol (TCP/IP), and click *Properties*.
4. In the Properties dialog box, click Use the following IP address and do the following:
 - a) IP Address: Enter a non-routable IP address for the loopback adapter.
Oracle recommends the following non-routable address:
192.168.x.x (where x is any value between 0 and 255)
 - b) Subnet mask: Enter 255.255.255.0.
 - c) Record the values you entered.
 - d) Leave all other fields empty.
 - e) Click OK.
5. Close the Network Connections window.

Note: On Linux systems, the loopback adapter is not required.

Appendix C: Installing Oracle 10g Express Edition

This appendix guides you through the installation of Oracle 10g Express on Windows and Linux. As of March 25, 2008, there is no Express Edition available for Oracle 11g. Note that Oracle Express is not compatible with Microsoft Vista.

Introduction

The Express Edition (XE) is a limited scalability version of Oracle designed to compete with comparable reduced scalability DBMS from Microsoft and other vendors. It has the following limitations:

- Only one CPU may be used (on multiple CPU systems, the equivalent of one CPU is used)
- No more than 4GB of user data may be stored
- Only one instance of XE may be run at one time
- XE will use at most 1GB of RAM during execution

Despite these intended scalability limitations, XE is ideal for classroom work because it requires fewer system resources, yet is functionally complete enough that it may be used for the exercises in CS579, CS669, and CS779. CS674 requires the Enterprise Manager, which is in the Enterprise Edition.

Requirements

This package has minimum requirements for operating system versions:

- Windows 2000 Service Pack 4 or later
- Windows Server 2003
- Windows XP Professional Service Pack 1 or later
- For Linux, kernel 2.6 is required.

Both Windows and Linux installations require approximately 1.7GB of disk space. At least 512MB of memory is recommended. Oracle Express Edition is not supported on Microsoft Windows Vista is not supported; if you have Windows Vista please only install the supported and qualified version of Oracle 10g Release 2 (10.2.0.3).

Installation (Windows)

The following is taken from the Oracle 10g Express Edition Installation Guide.

To perform a graphical user interface installation:

1. Log on to Windows with Administrative privileges.

You must be part of the Administrators group on Windows to install Oracle Database XE. If you are logged in as a domain user, ensure that you are connected to the network.

2. If the `ORACLE_HOME` environment variable has been set, then use System in the Control Panel to delete it.
3. Go to the following Web site:

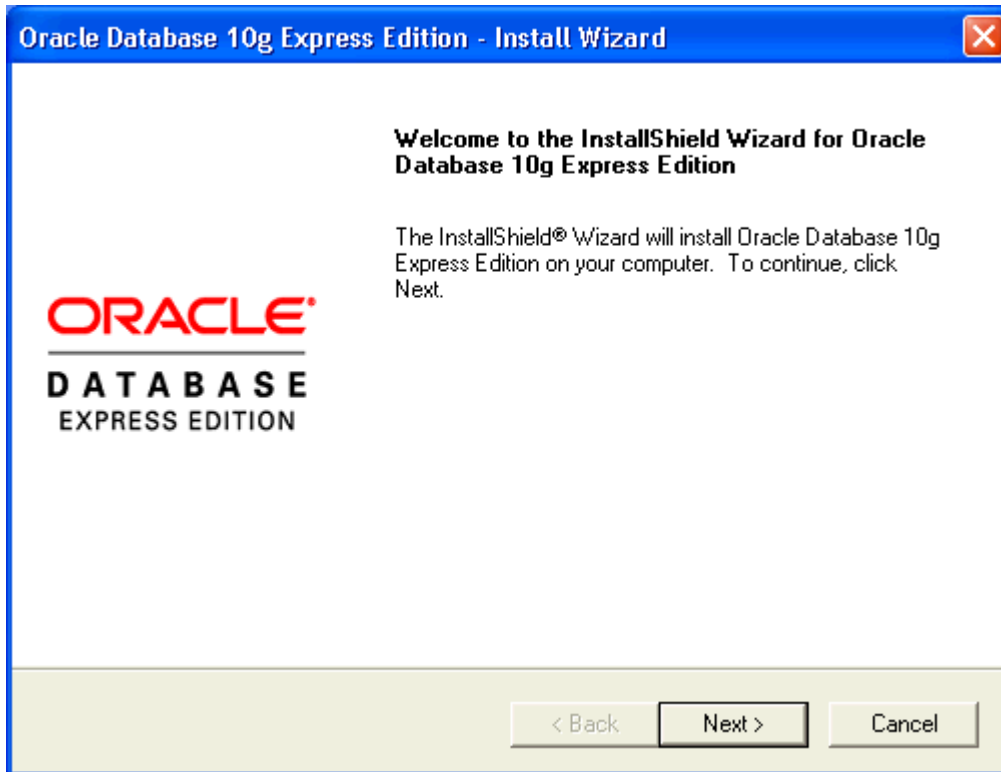
<http://www.oracle.com/technology/products/database/xe>

4. Click Free Download and follow the instructions to select and download the Microsoft Windows version of Oracle Database XE Server.
5. After downloading the Oracle Database XE installation executable, `OracleXE.exe` (for the Western European character set) or `OracleXEUniv.exe` (for the Universal character set), double-click it.

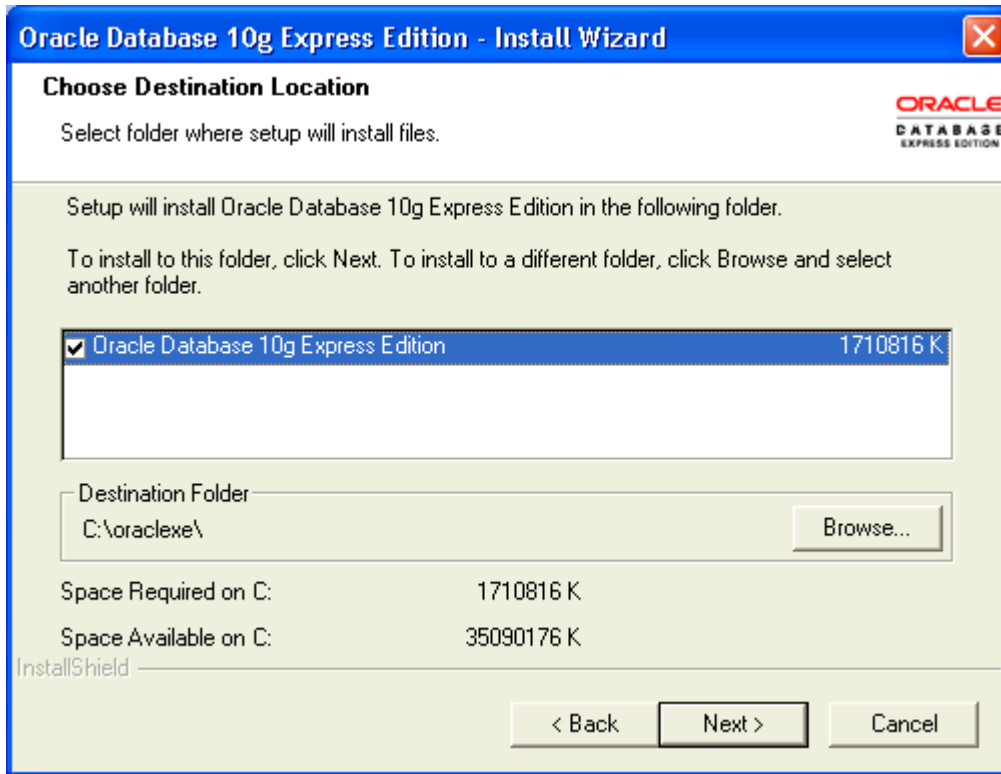
"Oracle Database XE Character and Language Configurations" describes these character sets in detail.

6. If you are installing over an existing Oracle Database XE installation, then click Repair and then select Next.

The Repair option appears only if you are reinstalling the same version of Oracle Database XE. If you are installing a newer version of Oracle Database XE, you must first uninstall the earlier version before installing the new version. In this case, the uninstallation removes the database of the earlier version. If you want to save its data before proceeding, refer to Oracle Database Express Edition 2 Day DBA for information on backing up the database.



7. In the Oracle Database 10g Express Edition - Install Wizard welcome window, click Next.
8. In the License Agreement window, select I accept and then click Next.
9. In the Choose Destination Location window, either accept the default or click Browse to select a different installation directory. (Do not select a directory that has spaces in its name.) Then click Next.



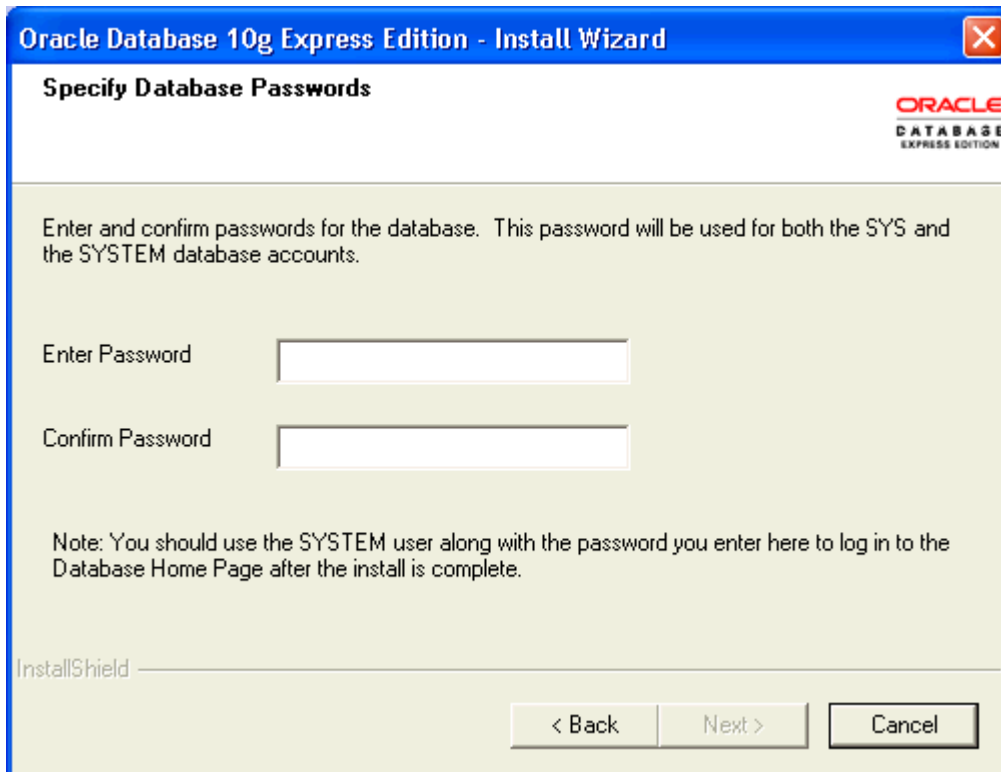
10. If you are prompted for a port number, then specify one.

The following port numbers are the default values:

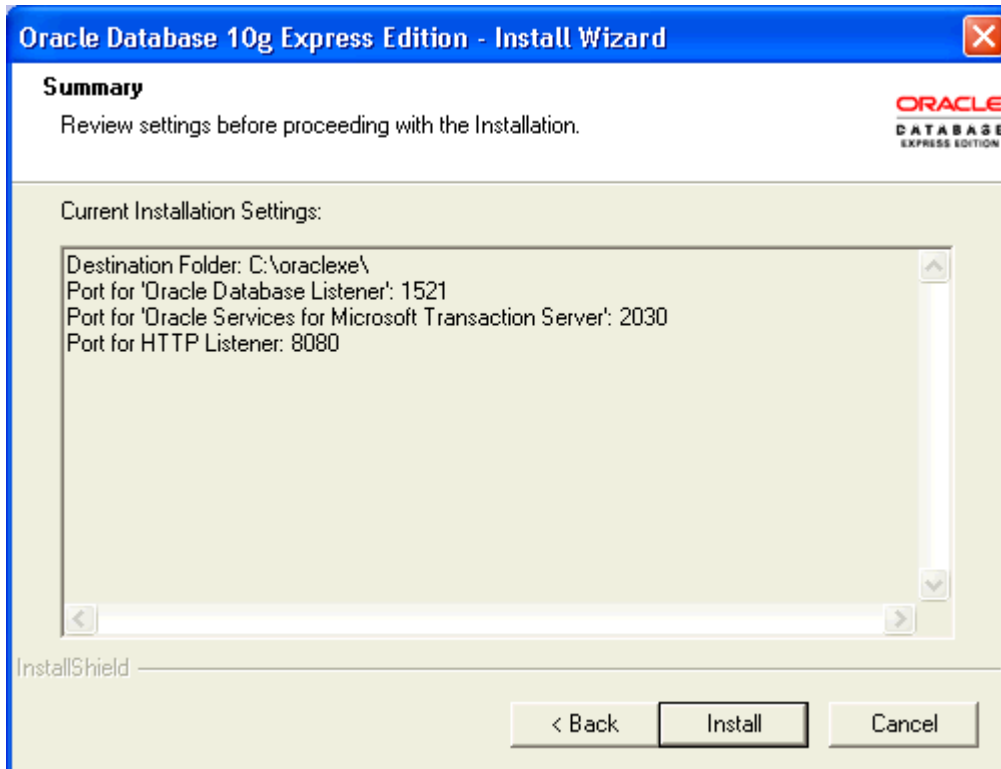
- 1521: Oracle database listener
- 2030: Oracle Services for Microsoft Transaction Server
- 8080: HTTP port for the Oracle Database XE graphical user interface

If these port numbers are not currently used, then the installation uses them automatically without prompting you. If they are in use, then you will be prompted to enter an available port number.

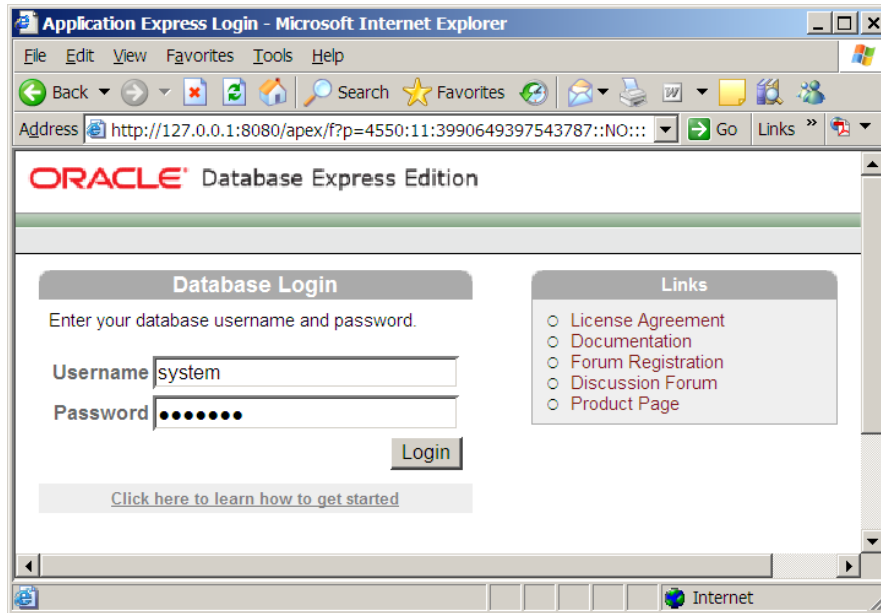
11. In the Specify Database Passwords window, enter and confirm the password to use for the SYS and SYSTEM database accounts. Keep these simple and write them down, because you will need them again. Then click Next.



1. In the Summary window, review the installation settings, and if you are satisfied, click Install. Otherwise, click Back and modify the settings as necessary.



12. In the InstallShield Wizard Complete window, to display the Database Home Page, click Launch the Database homepage. Then click Finish.
13. The database home page will open in your browser, as below. Type in your SYSTEM username and the password that you provided when you installed. Then click Login.



Installation (Linux)

To install Oracle Database XE Server:

1. Log on to your computer with root permissions.
2. Go to the following Web site:
<http://www.oracle.com/technology/products/database/xe>
3. Click Free Download and follow the instructions to select and download the Linux version of Oracle Database XE Server.
4. Run one the following Oracle Database XE executables to either install or upgrade Oracle Database XE server:
 - For Linux operating systems that use Debian:
 - Universal character set: oracle-xe-universal_10.2.0.1-1.0_i386.deb
 - Western European character set: oracle-xe_10.2.0.1-1.0_i386.deb
 - For all other supported Linux operating systems:
 - Universal character set: oracle-xe-univ-10.2.0.1-1.0.i386.rpm

- Western European character set: `oracle-xe-10.2.0.1-1.0.i386.rpm`

For example, if you downloaded the `oracle-xe-universal_10.2.0.1-1.0_i386.deb` executable into a directory called `downloads`, you would enter the following command:

```
$ dpkg -i downloads/oracle-xe-universal_10.2.0.1-1.0_i386.deb
```

If you downloaded the `oracle-xe-univ-10.2.0.1-1.0.i386.rpm` executable, you would enter this command:

```
$ rpm -ivh downloads/oracle-xe-univ-10.2.0.1-1.0.i386.rpm
```

The installation displays a status of its progress.

5. When prompted, run the following command:

```
$ /etc/init.d/oracle-xe configure
```

6. Enter the following configuration information:

- A valid HTTP port for the Oracle Database XE graphical user interface (the default is 8080)
- A valid port for the Oracle database listener (the default is 1521)
- A password for the `SYS` and `SYSTEM` administrative user accounts
- Whether you want the database to start automatically when the computer starts

If you enter `Yes`, then the database starts immediately

If you need to change the configuration settings, then you can do so by running the following command:

```
$ /etc/init.d/oracle-xe configure
```

To start the database manually, run this command:

```
$ /etc/init.d/oracle-xe start
```

To stop the database manually, use the following command:

```
$ /etc/init.d/oracle-xe stop
```

Starting the Database (Windows and Linux)

The following is taken from the Oracle 10g Express Edition Installation Guide.

After you have installed Oracle Database XE, the database is up and running and you can begin using it right away. To start using Oracle Database XE, you can go to the Database Home Page in the Oracle Database XE graphical user interface.

Immediately after you install Oracle Database XE using the graphical user interface installation method, if you selected the Launch the Oracle Database 10g Express Edition homepage checkbox when the installation completed, the Database Home Page appears. To get started using Oracle Database XE, click Getting Started to learn how to log on and create a simple application.

If you did not select the Launch the Oracle Database 10g Express Edition homepage checkbox, or if you want to access Oracle Database XE from another computer, then follow these steps:

1. To access the Database Home Page, from the Start menu, select Programs (or All Programs), then Oracle Database 10g Express Edition, and then Go to Database Home Page.

If Oracle Database XE Server is installed on another computer, then you can access it from the following URL:

```
http://host:port/apex/
```

In this URL:

- `host` is the host name or IP address of the computer where Oracle Database XE Server is installed. If Oracle Database XE Server is on your local computer, then you can enter `localhost` as the host name.

Note that the URL in the browser by default points to the localhost IP address 127.0.0.1. If you want another user to access your Oracle Database XE installation, then provide the host name or IP address of your computer.

- `port` is the TCP port that the Oracle Database XE HTTP listener is listening on. You set this port number during installation. Normally it is set to 8080.

For example, if Oracle Database XE Server was installed on a computer with the host name `shobeen` with the default port number 8080, you would access the Database Home Page at this URL:

```
http://shobeen:8080/apex/
```

2. Log in to the database using the user name `SYSTEM`, and supply the password that you created during installation.

The web interface provides a Help link that displays commonly used commands.

Appendix D: How to reset your SYSTEM password on Windows

This appendix provides instructions for resetting your Oracle SYSTEM password without reinstalling Oracle. This method uses the operating system authentication, which must be enabled for this to work. We will login to Oracle using the SYSDBA account for which operating system authentication is turned on by default for operating system users in the "dba" user group. Users with the administrator privilege on MSWindows are usually in the dba user group. This solution depends upon having SQLPlus or another comparable Oracle client installed on the machine.

If you are running on a Microsoft Windows platform and you are logged onto the machine as a user in the "dba" operating system user group, which Oracle creates, you don't need to specify a password to connect as sysdba. Just go to the DOS (Command line) prompt and run "sqlplus / as sysdba". SQLPlus should be launched in the command line interface, connected to Oracle as SYSDBA. You can then change the SYSTEM password with the command:

```
ALTER USER SYSTEM IDENTIFIED BY <new password>;
```

Where <new password> is replaced by the new password that you wish to give to the SYSTEM user. For a class installation choose something memorable, and write it down or store it on your computer. Production passwords should be carefully chosen to be resistant to attacks and the passwords should be carefully protected.

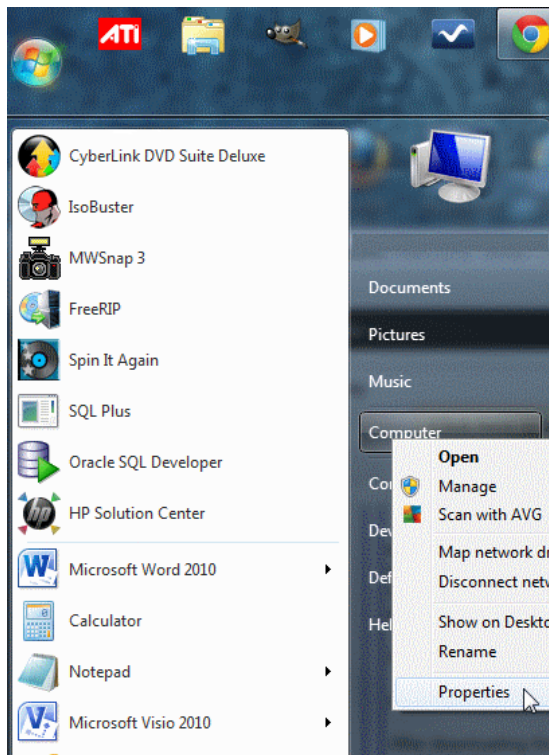
After you have changed the SYSTEM password to something that you know, you can connect as SYSTEM, and do anything that you wish, including changing any passwords. There are similar ways of connecting to Oracle if you know the root password on UNIX family platforms.

Appendix E: How to reduce the length of your PATH on Windows

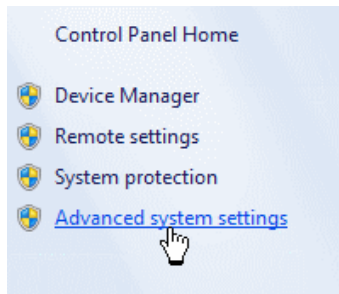
Operating systems including Windows have a maximum length for the value of an environment variable. Environment variables are name/value pairs that control important operating system functions. For some versions of Windows, the maximum is 1024 characters. The PATH environment variable tells Windows where to look for executable files. To function properly, Oracle needs to add its directory to this list. If Oracle's entry into the PATH variable would cause it to exceed the maximum allowable length, Oracle's entry will be ignored.

The resolution to this problem is for you to remove one or more entries from the PATH. However, *do not arbitrarily remove characters or directories from this environment variable as this can cause your operating system to malfunction*. Rather, you need to view the contents of the variable, determine what can be removed, and carefully remove one or more directories from the list. One common reason for the variable's value to be too long is that you have uninstalled software from your system, but its entry in the PATH variable was not removed. If this is the case, simply remove the unneeded directory from the PATH. Another common reason is that you have installed many versions of Oracle or SQL Server. In this case, simply uninstall an unneeded version and ensure that its entry has been removed from the PATH.

To view and edit environment variables in Windows Vista or Windows 7, first click the Windows icon, right click on "Computer", then click "Properties":



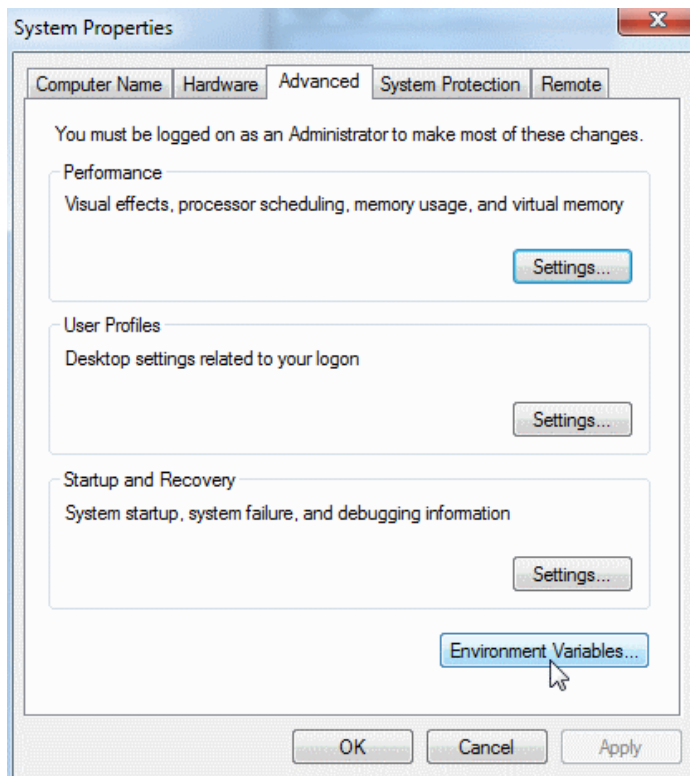
Next, click on the "Advanced system settings" hyperlink:



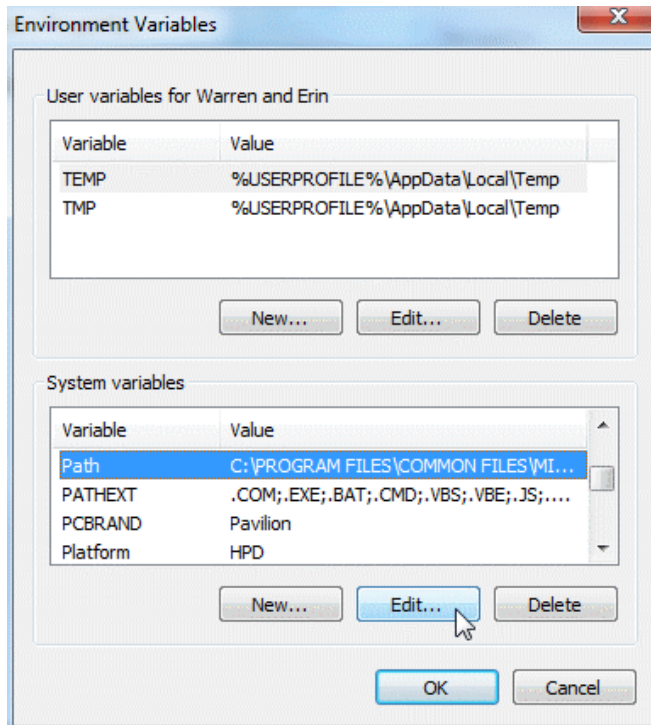
View basic information about your computer

Windows edition _____
Windows 7 Professional
Copyright © 2009 Microsoft Corporation. All rights reserved.
[Get more features with a new edition of Windows 7](#)

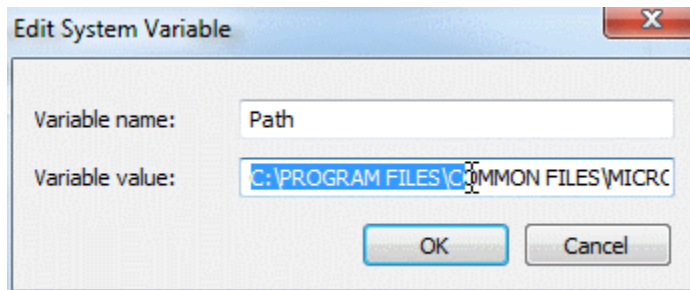
On the resulting dialog, click on the “Environment Variables...” button:



On the Environment Variables dialog, select “Path” under “System variables”, then click the “Edit...” button:



You can now edit the value in the resulting dialog.



As previously mentioned, do not arbitrarily delete text here. Rather, carefully determine the directory or directories to delete. Notice that the value is a list of directories separated by a semicolon (;).

To save your edits, click the OK button on the open dialogs.