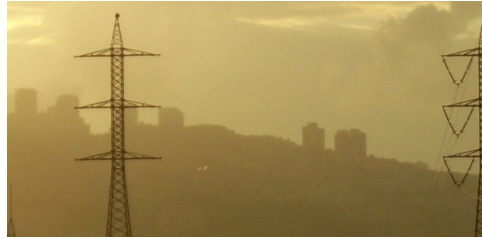


Summer 2



July 6 – Aug 10

6 pm, Mon & Wed

HAR 312

UA 510 Special Topics

Public Health and the Built Environment

Attention Planning and Public Health Students:

- *Learn how public policies have created long-term health impacts upon generations of urban residents*
- *Understand how intervention strategies are designed to target these problems*
- *Analyze types of evidence applied in the policymaking process*



Develop solutions-oriented policies to overcome these systemic issues

[Register Now](#)



<http://www.bu.edu/cityplanning>