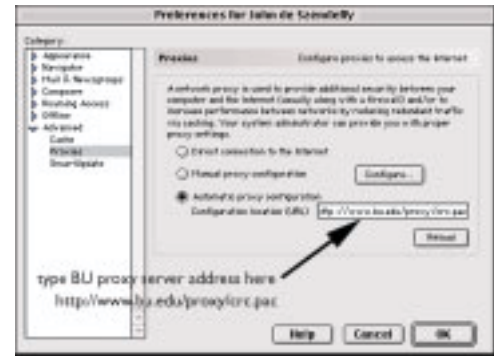


MLL Workshop | Using LexisNexis



Introduction LexisNexis is a colossal database of published articles, reports, cases, and transcripts from newspapers, magazines, and journals from around the world. Find articles on a particular subject, a specific article, transcripts to news programs (such as NPR and PBS), and use it to model authentic use in context of vocabulary words under study.

Access This resource is available only by subscription to institutions, such as B.U. You can only access L/N from the B.U. network (on campus) or by connecting to B.U. by modem. If you access the Internet from home by cable or some other non-B.U. ISP, then you will have to set up a proxy server or use a VPN. Set up a proxy server simply by adding a B.U. proxy server address to your Web browser preferences (e.g., Netscape, at right). For step-by-step directions, go to www.bu.edu/proxy/configure.html.



Find LexisNexis Go to L/N from the MLL Student page, Teachers' Resources page, or BU Libraries:
www.bu.edu/celop/ml/ll/startup/ www.bu.edu/celop/ml/ll/TR.html web.lexisnexis.com/universe

Conducting searches *Quick News Search.* L/N now presents a simplified "Quick News Search" as its default option (at right). If you're not particular about your sources and have a specific search string, such as "foreign student enrollment," then you might be able to use this simple search method. The only parameter you can change here is the dates of publication (from the pop-up menu below the search field).

While the *Quick* search looks in all English language L/N documents up to two years prior, it only matches *key terms* identified; that is, it's not a *full-text* search of all documents. A *Quick* search also assumes an *or* between all search terms and accepts no other connectors, such as *and*.

Tips provides explanations for L/N search techniques



- Today
- Previous week
- Previous month
- ✓ Previous six months
- Previous year
- Previous two years

The L/N homepage also provides access to quick searches for legal cases or corporate information



LexisNexis™ Home Search How Do I? Site Map What's New Help

Boston University Libraries

Search Terms: foreign student enrollment

Jump to Documents: 1-25

Print Email

Document List Expanded List KWIC Full Documents 1 - 25 of 125 next

Sorted by Relevance | Sort by: Date

1. [The Press \(Chittsburgh\)](#), March 7, 2003, Friday, NEWS; NATIONAL, Pg. 4, THE CITY; A, 430 words, Student limit? Foreign surge pressures universities, ROSS Tara

2. [The Press \(Chittsburgh\)](#), March 10, 2003, Tuesday, NEWS; NATIONAL, Pg. 4, THE CITY; A, 474 words, Foreign ratio at Lincoln wastes staff, ROSS Tara

3. [The Ledger \(Lakeland, FL\)](#), February 23, 2003, Sunday, 979 words, FLIGHT SCHOOLS STILL HAVEN'T RECOVERED, CORY REISS Ledger Washington Bureau

4. [Los Angeles Times](#), March 10, 2003 Monday, Home Edition, Page 14, 90 words, The Nation; IN BRIEF / MICHIGAN; School Drops Program to Train Foreign Pilots, From Times Wire Reports

5. [The Press \(Chittsburgh\)](#), February 27, 2003, Thursday, NEWS; NATIONAL, Pg. 4, THE CITY; A, 491 words, Rat fee 'bailing' foreign students, ROSS Tara

The search results from the *Quick News Search* (showing only 5 of 125 matches).

The *results view options* present four different formats (on tabs at top of list).

- Document List:** the default view for results, lists publications with article title, date, and length.
- Expanded List:** displays the same list with a dozen lines of each article extracted (not an abstract).
- KWIC:** displays only one article at a time with extended extracted text.
- Full:** shows the entire text of the article.

Guided News Search To conduct a more detailed search, perhaps limited to certain sources, such as major magazines or news transcripts, and a specific date, click on the **Guided News Search** tab of the L/N homepage. Here you will see many more options (below).

Quick News Search Guided News Search

Step One: Select a news category -- *Entry Required*

Select a News Category

Step Two: Select a news source -- *Entry Required*

All Available Sources [Source List](#)

Step Three: Enter search terms -- *Entry Required*

Headline, Lead Paragraph(s), Terms

Headline, Lead Paragraph(s), Terms

Headline, Lead Paragraph(s), Terms

Step Four: Narrow to a specific date range -- *Optional*

Previous six months

From: To:

Step Five: Search this publication title(s) -- *Optional*

Search Clear Form

Select a News Category

- General News
- Today's News
- U.S. News
- World News
- News Wires
- News Transcripts
- Arts & Sports News
- Non-English Language News
- Business News
- Legal News
- University News
- Medical News

Please select from list below

- Major Papers
- Magazines and Journals
- Newsletters
- Abstracts
- Policy Papers
- Time Incorporated Publications
- Ethnic News

Please select from list below

- All Transcripts
- ABC News Transcripts
- Barron's
- CBS News Transcripts
- CNBC News
- CNBC/Show Jones Business Video
- CNN Transcripts
- CNN's Transcripts
- Fox News Network Transcripts
- National Public Radio Transcripts
- NBC News Transcripts
- Newsweek with Joe Leifer
- Nightly Business Report
- Official Kremlin International News Broadcast
- Political Transcripts

This **Source** list changes depending on the News Category selected above. This menu results from a *General News* selection above.

Choosing the *News Transcripts* category presents a different *Source List*.

The screenshot shows the 'Guided News Search' interface. Step Three, 'Enter search terms', is the focus. It features three search boxes, each with a dropdown menu to its right. The first dropdown is open, showing a list of search locations: 'Headline, Lead Paragraph(s), Terms', 'Headline', 'Full Text', 'Location', and 'Show'. A callout box points to this dropdown menu.

The **Search Term** fields take the *key words* of your search. Put a word in one or more of the boxes. The pop-up boxes to the right indicate where you want the term to appear, in the headline or full text of the article or both (using the connector pop-up menu to the left).

- Headline, Lead Paragraph(s), Terms
- Headline
- Full Text
- Location
- Show

Search tips The more specific your search, the fewer irrelevant results you will have to sift through. Be specific about what sources and dates you want to search. The **publication title(s)** field, Step Five, might leave you with no results, especially for non-print media documents. For example, if you're looking for NPR transcripts from the *All Thing Considered* program and put that in Step Five as the publication title, you may get zero results because that program seems to be categorized more generally under National Public Radio. When you get zero or very few results, you're parameters were probably too specific.

If your search was too broad and you get too many results, you can further search within these results. Type a further refining term in the **FOCUS™** field that appears at the top of the results page. You will get no matches for a term that returns too many results (over 1,000).

Detecting plagiarism Use the *Guided News Search* to enter a suspect phrase, seven or more words, from a student's paper. If she used L/N for research and lifted text from an online document, then you will be able to find that document as well, and the document display in Nexis will highlight your search terms in bold. Search in the News Category (Step One) relevant to the student's topic (news, sports, medical, business, etc.). Don't be restrictive with dates (use "All Available Dates") or publications.

Other information available through LexisNexis

Reference materials

Biographical Information Politicians, business executives and more. Search documents containing biographical sources, people-related news sources and selected biographical stories, obituaries and business related stories covering company executives.

Country Profiles Concise facts and statistics about countries (from *CIA World Factbook* and others). Search by country.



Other resources from the L/N home page

Polls & Surveys Search Roper Center for Public Opinion Research for politics and government, public institutions, international relations, business, social affairs and consumer behavior and preferences. Includes news outlet opinion polling such as Gallup, Harris, Roper; ABC, CBS, CNN, etc.

Quotations This form searches quotations from *Simpson's Contemporary Quotations* and *3500 Good Quotes for Speakers*. Search by key word.

State Profiles Concise facts and statistics about each state from *World Almanac of the U.S.A.*

World Almanac Quick facts on any subject. Searches the *World Almanac* and *Book of Facts*.

Congressional information Including indexes to 1769.

Statistical information Search the words that appear in tables of statistical publications.

Vocabulary activity Use L/N to reinforce vocabulary under study. Put one or more vocabulary terms in a *Guided News Search*. The results will include articles that have these terms in context, identified in bold.

Foreign language news Use the *Guided News Search* and choose the news category "Non-English Language News" and the language in the source list to search publications in that language. Your search terms need to be in that language.



A foreign language news search.

Get archived *Boston Globe* articles for free The *Globe* only offers today's and yesterday's papers online for free. Older articles cost \$2.95. Instead, use the *Globe online* search to locate the article you're looking for. Use the exact article title and date in a Nexis search to retrieve the full text of the article for free.

Printing articles Once you find an article you want, click on the **Print** tab on the top right corner of the screen (next to the **Email** tab). Then click on the



Display Document button to see a "printer friendly"



version of the article stripped of all graphics, links, and other L/N Web site components.

Saving articles The print document display can also be used to save the article as a text document, which you can later open in AppleWorks or Word. Use the browser's **File > Save** command. Be sure **Format:** says **Text** (at right). Likewise, you could select and copy text from this display to paste into an existing document.



E-mailing articles Click on the **Email** tab (above) to send the current article directly to one recipient at a time. It will come from L/N, so you will not need access to your E-mail program.

