

BIOLOGY CONCENTRATION WITH A SPECIALIZATION IN ECOLOGY AND CONSERVATION BIOLOGY

**BIOLOGY CORE COURSE
REQUIREMENTS (5)**

- BI 107 _____
- BI 108 _____
- BI 206 _____
- BI 303 _____
- BI 448 _____



ADDITIONAL BIOLOGY (7)

*1 course must be a PER/NEU.
 3 courses must be @ 300-500 level.
 3 courses must have a lab component.*

- BI 315 or 325 _____
- BI _____
- BI _____
- BI _____
- BI _____
- BI _____
- BI _____

Breadth Requirements

CM.....BI 206
 EBE.....BI 303
 PER/NEU.....BI 315 or BI 325

CAS REQUIREMENTS

WR100 _____ WR150 _____

Language 1 _____ Language 2 _____

Language 3 _____ Language 4 _____

Tropical Ecology Program requires 2 semesters of Spanish.

DIVISIONAL REQUIREMENTS

HU _____ SS _____ MA/CS _____

HU _____ SS _____ MA/CS _____

**RELATED
REQUIREMENTS**

CHEMISTRY (3)

Option 1

CH 101 (111) _____

CH 102 (112) _____

CH 203 (211) _____

Option 2

CH 171 _____

CH 172 _____

CH 273 _____

PHYSICS (2)

PY 105 (211) _____

PY 106 (212) _____

MATHEMATICS (2)

MA 121/MA 122 _____

MA 123/MA 124 _____

MA 213/ MA 214 _____

CS 108 or 111/MA _____

Calc/Stats _____

See your bulletin for acceptable math course combinations.

**PROPOSED COURSE
OF STUDY**

FRESHMAN YEAR

1 _____ 1 _____

2 _____ 2 _____

3 _____ 3 _____

4 _____ 4 _____

SOPHOMORE YEAR

1 _____ 1 _____

2 _____ 2 _____

3 _____ 3 _____

4 _____ 4 _____

JUNIOR YEAR

1 _____ 1 _____

2 _____ 2 _____

3 _____ 3 _____

4 _____ 4 _____

SENIOR YEAR

1 _____ 1 _____

2 _____ 2 _____

3 _____ 3 _____

4 _____ 4 _____

**TROPICAL ECOLOGY PROGRAM
(OPTIONAL COURSES)**

BI 438 _____

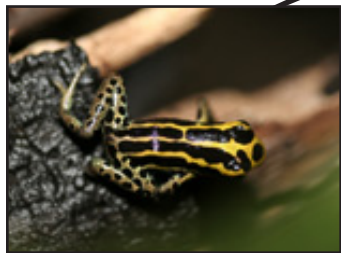
BI 439 _____

BI 440 _____

BI 441 _____

TEP courses fulfill 4 of the 7 Additional Biology Courses and the Biology Concentration Requirement of 3 courses at the 300-500 level, with a lab/field component.

BIOLOGY CONCENTRATION WITH A SPECIALIZATION IN ECOLOGY AND CONSERVATION BIOLOGY



Core Biology Courses (5)

BI 107 Biology I
BI 108 Biology II
BI 206 Genetics
BI 303 Ecology
BI 448 Biodiversity & Conservation Biology

plus

Additional Biology Courses (7) - 1 must be BI 315 or BI 325

Six courses in Biology must be selected from the following array:

BI 260, BI 301, BI 302, BI 305, BI 306, BI 309, BI 407, BI 414, BI 415, BI 417, BI 423,
BI 466, BI 468, BI 477, BI 486, BI 503, BI 506, BI 508, BI 512, BI 515, BI 530, BI 531,
BI 532, BI 547

**4 of the additional 7 Biology Courses may be taken as part of the
Tropical Ecology Program in Ecuador!**

Related Requirements

Chemistry Courses (3)

CH 101, 102 & 203; CH 111, 112 & 211; or CH 171, 172 & 273

Physics Courses (2)

PY 105 & 106 or PY 211 & 212

Mathematics Courses (2)

MA 121 & 122; **or** 123 & 124; **or** 213 & 214;
or CS 108 or CS 111 and 1 Math course (listed previously);
or 1 course in Calculus and 1 course in Statistics (listed previously)

Please refer to the
Undergraduate Programs
Bulletin published the year you
entered the program for more
detailed information.

Additional Information

Students must have a minimum of three biology courses with laboratory or field components. At least three of the biology courses must be at the 300-500 level.

The following courses must be completed prior to attending the Tropical Ecology Program in Ecuador: BI 107, BI 108 and BI 303. Completion of two semesters of Spanish is also required to participate in the program. A minimum GPA of 3.0 is required to participate in the program.

One semester of research, either Work for Distinction or Undergraduate Research on an approved topic with an EBE faculty member may also be accepted for the specialization.

A grade at least C is necessary in all biology related courses for concentration credit, with a minimum GPA of 2.0 in the Biology Concentration.

All biology or related courses must be approved for concentration credit by the Department of Biology. Selected courses in Chemistry, Earth Sciences, Environmental Sciences, Health Sciences, and MMEDIC are available for concentration credit by department petition.

For more
information see
Ruth Greene,
Biology Department
Academic Administrator,
BRB 101; Dr Thomas
Kunz, CECB Director,
BRB 431; or Freya
Hendrickson, CECB
Administrator,
BRB 431.