



new art center in newton
CELEBRATING 40 YEARS

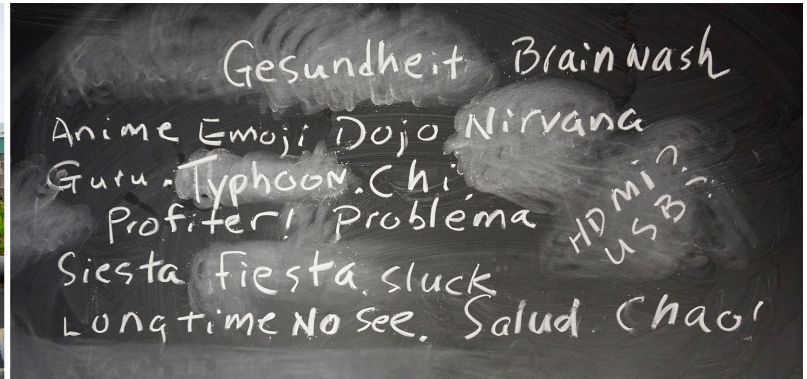
FOR IMMEDIATE RELEASE

Contact: leah@newartcenter.org
61 Washington Park, Newton, MA 02460
www.newartcenter.org
617.964.3424

Wen-hao Tien: Weed Out

On View in the Holzwasser Gallery: September 22 - October 19, 2017

Opening Reception: September 22, 6-8PM



Images left to right: Wen-hao Tien hunting for traces of wilderness in the city; Brainstorming "weed words".

(NEWTONVILLE, MA) - The New Art Center (NAC) is pleased to present *Weed Out*, an installation by local artist Wen-hao Tien. On view this Fall in the Holzwasser Gallery, this exhibition contemplates alienation and belonging through the lens of those pervasive and often unwanted plants we call weeds.

ABOUT THE EXHIBITION

Wen-hao Tien's installation, *Weed Out*, is the result of her hunt for traces of wilderness in the city, namely, plants that normally go unnoticed -- or, if noticed, are usually pulled out or mowed over. These plants are weeds, considered by many to be unsightly nuisances.



For this installation, Tien transplanted weeds from across New England into a living sculpture, which will continue to grow and change throughout the exhibition. An audio recording of words from various languages sheds light on linguistic habits that align with the treatment of weeds. These "weed words" have jumped from one dialect to another, just as many plants flourish in unexpected places, and are valued quite differently depending on both the location and the viewer.

What are "pure" words and plant species, versus "invasive"? How do powerful forces such as migration, rejection, and assimilation affect cultural norms as well as the natural world? Tien's installation invites viewers to dwell on these questions by interacting with the growing sculpture. Tien will regularly supply more "weeds" to an interactive installation, which visitors can weed-in or weed-out, as they wish.

Above: Artist Wen-hao Tien gathers weeds, 2017.

ABOUT THE ARTIST

Wen-hao Tien is a visual artist, educator, and Assistant Director of Boston University Pardee School of Global Studies.

Initially growing up in Taiwan, Tien later moved to the United States to pursue graduate studies. Her studio artwork focuses on language and translation, and explores culture and identity through a unique cross-cultural lens. She is also known for her contemporary Chinese calligraphy and painting.

A long-time Cambridge resident, her professional background includes 15 years working in the Center for Government and International Studies (CGIS) community. Tien holds a Master of Public Health from Columbia University and is currently a candidate for a Master of Fine Arts at Lesley University's College of Art and Design.

ABOUT THE HOLZWASSER GALLERY

The Holzwasser Gallery was created in 1991 due to a generous donation from Mary Holzwasser (1912-2003), an artist, student, New Art Center board member, and lifelong patron of the arts. At her request, Holzwasser Gallery exhibitions are designed to enhance the learning available in our studios and enliven the conversation about teaching, learning and participating in the arts.

CONCURRENT EXHIBITION IN THE MAIN GALLERY: COLOR:CODED

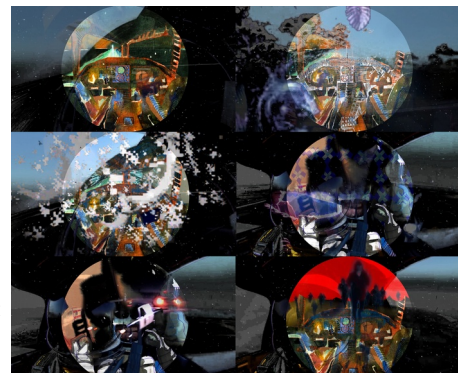
On View: September 15 – October 21, 2017

Opening Reception: Friday, September 15, 6-8PM

A Curatorial Opportunity Program (COP) Exhibition curated by Michael Covello Odalla and Alison Terndrup

Participating Artists: Alison Chen, Zhiwan Cheung, Michael Covello Odalla, Trenton Doyle Hancock, Kalup Linzy, Noelle Mason, Desiree Moore, Beth Plakidas, Elizabeth Schneider, Saya Woolfalk, and Michelada Think Tank

COLOR:CODED engages viewers with the layered issues and loaded history of color – as both an element of visual art and a social construct – through video work, paintings, and site-specific installations by a diverse group of eleven artists.



ABOUT THE NEW ART CENTER

The New Art Center in Newton supports the development of visual artists and cultivates a community that appreciates art. We offer a supportive culture that takes art and artists seriously. We serve over 2,500 students annually in hundreds of classes and workshops. Our faculty includes some of New England's best art educators. In a setting that is welcoming and accessible by public transportation, we offer an inclusive, multi-generational approach to art education that has served children, teens and adults at all skill levels since 1977. We operate one of the few mid-sized nonprofit exhibition spaces in New England, which attracts over 5,000 visitors annually.

Gallery Hours: Tuesday through Saturday, 1PM-6PM, and by appointment.

These exhibitions are free and open to the public.

Transportation: The nearest T stop to the New Art Center is Newton Highlands on the Green Line (D/Riverside), then take the #59 North bus and exit at Walnut St and Washington Park. Alternatively, take the #553, #554, or #556 buses from downtown and exit at the Washington/Walnut Street corner. Call the MBTA for schedules and fare information. NAC is also accessible from the Mass. Pike, Route 128, or the Newtonville stop on the commuter rail (Framingham line).