

New course!

**CAS LK 250**

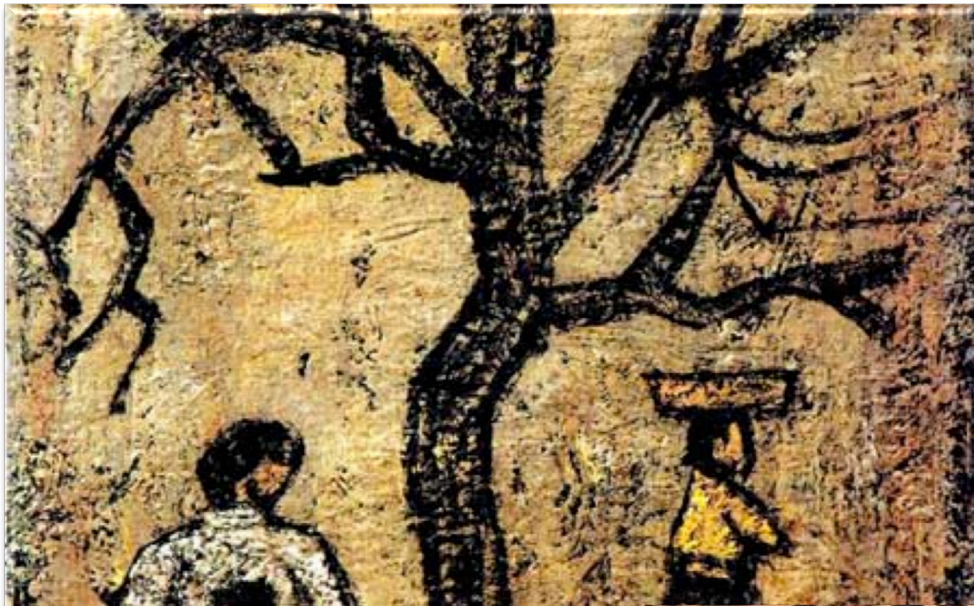
New course!

# **Introduction to Korean Literature**

**FALL 2012**

**MWF 10-11 AM**

**Professor Yoon Sun YANG**



**What is Korean literature? How has it evolved through interaction with Chinese, Japanese, European and American literatures and cultures? What roles have regional and global changes played in shaping Korean imaginative writing? No prerequisites; all readings and discussion in English.**