

## DIRECTIONS TO THE CENTER

### **From the North via I93-S:**

1. Take I93S to exit 28, “Sullivan Square—Charlestown.” Bear left until completely off the exit.
2. Watch for sign: “Boston via Sullivan Square—Charlestown”
3. Go straight through traffic lights—do not go over overpass.
4. See sign: “City Square—Constitution Road Next Left”
5. See: ***Continuation from all points***

### **From the South vis I93-N:**

1. Enter Central Artery Tunnel on I-93 N and take Exit 26 (Storrow Drive). Exit from right lane. Once on exit ramp inside tunnel, stay in the left lane and exit the tunnel, always remaining in the left lane.
2. Follow signs for North Station. Go straight through the first set of traffic lights.
3. At 2nd set of lights, turn left on Causeway St. Go through blinking yellow traffic lights.
4. At next traffic light, turn left onto North Washington St. and cross the Charlestown Bridge.
5. Take first right at the end of bridge onto Chelsea St.
6. See: ***Continuation from all points***

### ***Continuation from all points:***

Go through 3 sets of traffic lights and turn right at the fourth set onto **13th Street**. Our building is located at **149 13th St.**

MGH/HST Athinoula A. Martinos  
Center for Biomedical Imaging



Massachusetts General Hospital  
Charlestown Navy Yard  
149 13th St.  
Charlestown, MA 02129

Phone: (617) 643-7721  
E-mail: [kharwood1@partners.org](mailto:kharwood1@partners.org)

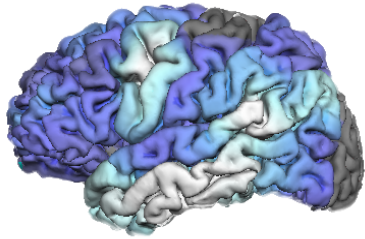


## -Match AD-

A Brain Imaging Research Study on  
Healthy Aging, Cognitive Impairment,  
and Alzheimer’s Disease



Massachusetts General Hospital  
Charlestown, MA 02129.



## **The Research**

Cognitive impairment and Alzheimer's Disease are serious conditions affecting many older adults. Recent advances in imaging technology have provided researchers with new and improved methods of studying these conditions.

The Center for Neuroimaging of Aging and Neurodegenerative Diseases at the Massachusetts General Hospital is conducting a research study investigating these technologies in hopes of contributing to ongoing efforts to better understand and treat memory disorders.

## **WHO?**

Men and women ages 60 and older who are healthy, suffering from cognitive impairment, or Alzheimer's Disease, are wanted for a research study examining the characteristics of normal aging and changes in the brain that occur with memory problems.

## **WHAT?**

The study includes a 2 hour clinical evaluation and blood draw, a 1.5 hour neuropsychological examination (a series of pen-and-paper tasks followed by tasks administered on a computer), and several different imaging sessions: two 1 hour MRI scans, a 1.5 hour MR-PET (minimal radiation exposure involved), a 1 hour MEG, and a 1 hour EEG. These assessments are completed in 3 visits over 1-2 months. Participants will be paid for each completed portion, with compensation totaling \$425 for completion of the full study. Parking will be reimbursed, and meals will be provided to you while you are here.

## **WHERE?**

This study takes place at the Massachusetts General Hospital Martinos Center for Biomedical Imaging in the Charlestown Navy Yard. A parking garage is located across from the building, for those who drive to the center. Detailed directions to the center are included in this brochure.

## **IF YOU'RE INTERESTED:**

Call Kathy Harwood, the coordinator for this study, at (617) 643-7721 to complete a short screening questionnaire that will determine you're eligibility. Eligible candidates can set up an appointment over the phone, and may ask any questions they might have about the research.

Interested candidates may also email the research coordinator at [kharwood1@partners.org](mailto:kharwood1@partners.org) to begin arranging a possible visit to our center.

